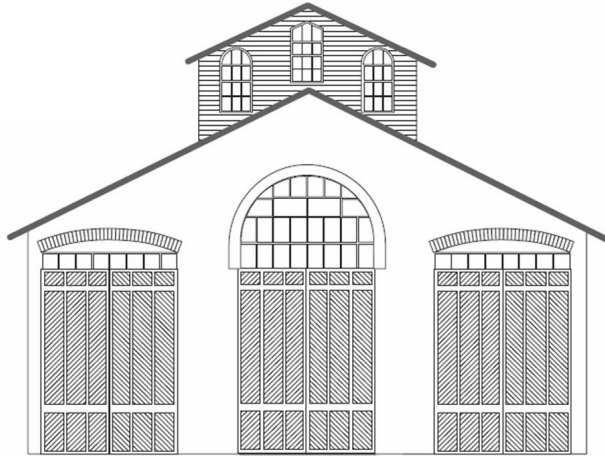


# CAR



# HOUSE

**June 18, 2026**



[Div. 8 Website: https://www.div8.NcrNMRA.org](https://www.div8.NcrNMRA.org)

Website:  
<http://www.nmra.org/>



**Call to Order:** 7:03

**Recognition of visitors and MMRs in attendance:** Bruce DeYoung, Larry Wolohon and Jim Zinzer

**President's Page**

Well, if you haven't figured it out already, life isn't always perfect. With that in mind, combined with the wonderful clinic that Bruce DeYoung gave us at our June meeting, my message this month includes a link that can help you model a very interesting scene on your railroad. Lumber is loaded onto freight cars given very specific rules documented by the AAR. Despite those rules, sometimes things just happen. Below is a link on how to model a lumber load that has shifted. It's up to you if you want to have a load that shifted just a little, or if you want to have a load shifted so much that it's showstopper on your railroad.

Something to have fun with. Enjoy!

<http://nightowlmodeler.blogspot.com/2023/08/open-loads-part-7-shifted-lumber-loads.html>

Mark

**Clinic**  
**Hauling Logs Out Of The Woods**  
**BY**  
**Bruce DeYoung**

One of the biggest challenges in the logging industry was getting the logs from the forest to the sawmills. In the early days, rivers served as the primary means of transportation. Logs were slid into the water and floated downstream to the mills.

Initially, horses and oxen were used to drag logs out of the forest. While trees could be cut during the warmer months, hauling the logs was often done in winter, when frozen ground made the work much easier.

As technology advanced, steam-powered "donkeys" (logging winches) revolutionized the process. These machines could pull logs from the forest to centralized loading sites. Steam log

loaders then lifted the logs onto railroad log cars for transport to the mills. Later, diesel-powered equipment gradually replaced much of the steam machinery, increasing efficiency and productivity.

Bruce presented an excellent collection of photographs illustrating the wide variety of equipment used throughout the history of logging operations. His presentation highlighted the evolution from horse- and ox-powered methods to steam-powered machinery and, eventually, to modern diesel equipment.

A full copy of the clinic will be available on our Division web site after the Regional Convention.

## **BUSINESS MEETING ITEM**

**Car House approved.**

### **April Treasurer's report Dan Shilt:**

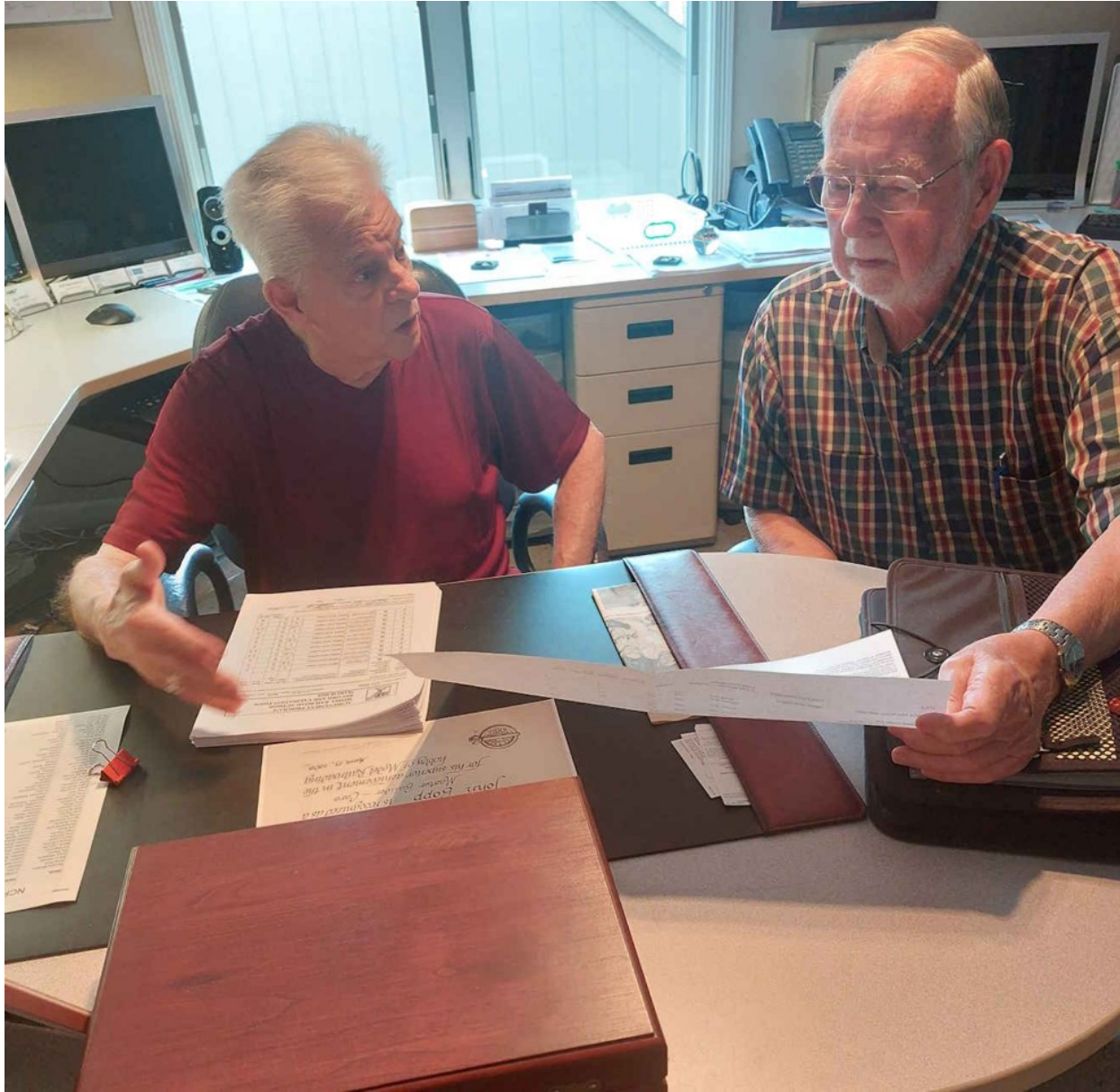
Balance of \$4,503.12. No expenses. Collected \$30 user fees.

**With the start of the new year, the membership meeting fee is due. The fee is \$10 per year payable in January. Check with Dan Shilt, he will be happy to assist.**

All Members – Please check your NMRA membership cards and renew today. Insurance regulations require meeting participants be NMRA members {after three meetings}. Please stay current. You can renew at NMRA.org. There are so many benefits of membership, including discounts at major online retailers, information available on the website. Membership with digital delivery of the NMRA magazine is \$68 per year, \$92 with US mail delivery of the NMRA magazine.

**Regional AP update – Bruce DeYoung – A number of forms are in process.**

## AP Column



In the attached photo, I am holding a spread sheet summarizing the publications and clinics under consideration and totaling up the points. The stack of paper under Ken's right hand are photo copies of all the articles published and summaries of the clinics, etc. (In this case, the member's submission

included articles from National, Region, and Division publications, plus a number of clinics presented at various levels. The number of points earned was in excess of the 42 points required. Refer to last month's column or to the NMRA website to learn about the 'point count'.)

This review of a well-organized presentation of material prompted this month's follow-up column. If you have interest in working towards the Author Certificate, create a spread sheet now that lists each article or clinic, date given/published, where it appeared, etc. For print material (either traditional or digital), include word length of the article. (Remember that Microsoft Word will give you the word length of an article if asked.) Also, get in the habit of printing out (or photo copying) all articles and putting them into a folder for future submission. It is much easier to do this as you go along rather than trying to recreate the documentation a few years down the road.

Finally, a reminder to past and current Division Presidents, Secretaries, and Newsletter Editors. The content that you create for the newsletter (President's Column, Secretary Reports, Newsletter Content like the summary of Show & Tell, plus any photos that are yours and get published in the newsletter) all count towards the Author Certificate. Up to half of the points needed (21) can be earned at the Division publication level. Add to that a few clinics given at the Region and/or National level, and you are well on the way to earning the certificate. Just add a few short articles submitted to the Region Newsletter and you've got it.

Until next month ---

**Layout Tours - Dan Lewis:** Waiting for confirmation of locations.

**Operating Session Plans – Curt Danielewicz can be contacted if you would like to set up a session or be included in future Operating Session plans. [Curt48044@Gmail.com](mailto:Curt48044@Gmail.com)**

**Door monitor** at the church: July - Chris Dobies, August - Ken Sherer

Thanks for volunteering. **Please consider volunteering for future months. It only requires a half hour of your time just before the meeting.** For security reasons the church door must remain locked at all times. Thanks for helping out the Division and keeping everyone safe.

### **Old Business –**

- We have scheduled a Division outing/retention event this summer. It would be at the Huckelberry Railroad on August 1<sup>st</sup>. This would be part of their Train fan weekend. We would cover the cost of your admission to the village and the train ride. Cost for any companions would be 17.85 for adults, \$17 for anybody 60 and over. \$16.50 for kids 2-12 years old. That day would include tickets on a special photo excursion train ride and a behind the scenes tour of the rail facilities. There will also be layouts on display and everybody gets to take home a piece of coal. There are 3 places to get food. Food will be

the responsibility of each attendee. A last chance sign up sheet was passed around during the meeting.

- They are looking for clinicians for the Zeeland Regional convention. See attached sign up sheet.
- Modelers meet in Sylvania is being discontinued due to increasing costs. Declining attendance, and nearly nobody outside the NMRA attends per Marshall Stull.

## **New Business**

- Looking for a fill-in to manage the computer when Curt is not able to attend the meeting. George VanDuyne volunteered.
- Announcements – Irv Chmielewski – Please provide announcements to Irv.

## **Hints and Tips**

- Culver's Restaurants has stacks of clean small cups and tops. Seems to be no issue with distribution.
- Weather Tech has a good selection of mats that can be used for work surfaces.
- The Mentor/Mentee file (give help/receive help) is at [https://docs.google.com/spreadsheets/d/1hj4moARyx4iKjpShtSzk8mVanFln9vq0/edit?usp=drive\\_link&oid=116662642115004050447&rtpof=true&sd=true](https://docs.google.com/spreadsheets/d/1hj4moARyx4iKjpShtSzk8mVanFln9vq0/edit?usp=drive_link&oid=116662642115004050447&rtpof=true&sd=true)
- The private Clinton River Division Facebook group is at <https://www.facebook.com/groups/288929175921717/>
- Also check out or web page at <https://div8.ncrnmra.org>

## **Announcements**

***Please notify Irv Chmielewski ([NCRDIV8SECRETARY@gmail.com](mailto:NCRDIV8SECRETARY@gmail.com)) if you would like to have an announcement posted in Car House. Provide written details***

- See fliers at end of Car House for future events including any upcoming train show/sales.
- A list of train shows is also available on the website <https://www.trainshowlist.com>

# Show and Tell

## Show and Tell

Tim Fisher  
Z Box Cars

Northern Pacific Steel 40' NP 17179  
Athearn model  
Great Northern Double sheath GN  
24553 Athearn model



Gary Figi  
Big Boy on Tour 2026

Photos of the Big Boy #4014 on tour.



Ken Glaza  
New Products

G gauge crossing gates and the electronics to compliment to properly activate the signal.



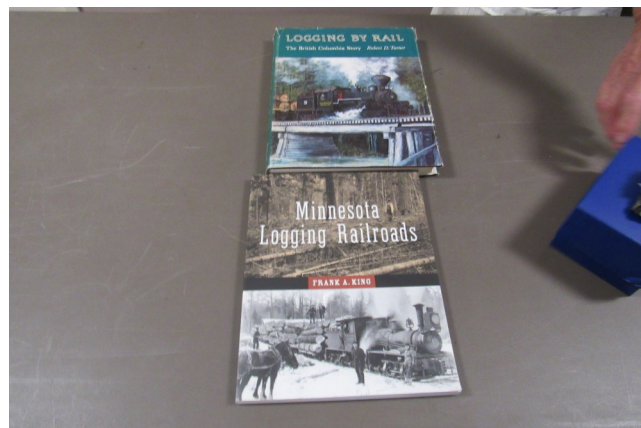
Ron King  
Logging Truck

Woodland Scenics Logging Truck out of the box.



Phil Doolittle  
2 books on Logging

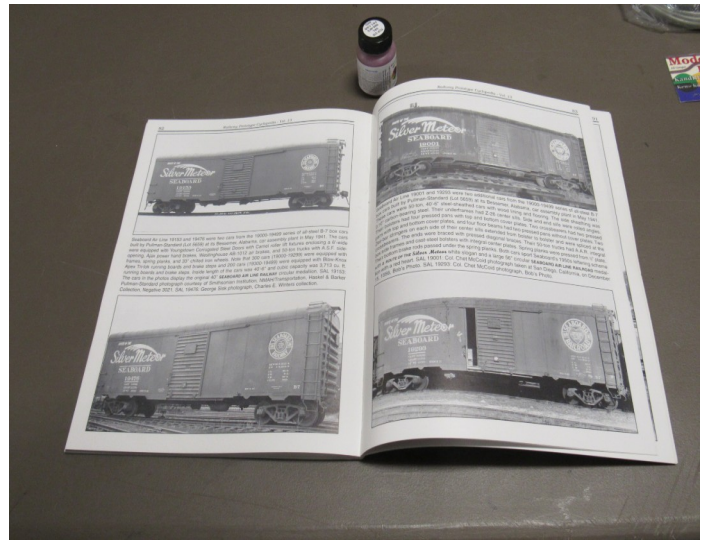
1. Logging by Rail in British Columbia by Robert D. Turner
2. Minnesota Logging Railroads by Frank A King.



Monthly Newsletter of the **Clinton River Division** of the North Central Region of the NMRA

Larry Wolohon  
Logging /current project

RDC – Showing SAC turtle-back box car  
Tru-color Paint SAL Box car red.



Dan Lewis  
4 N scale cars

1. Gon w/ Logs
2. Pulp wood Car
3. Chip Car
4. Lumber Car



John Gavasso  
R.R. Log Equipment

Circa 1952 Lionel operating log  
dump car.



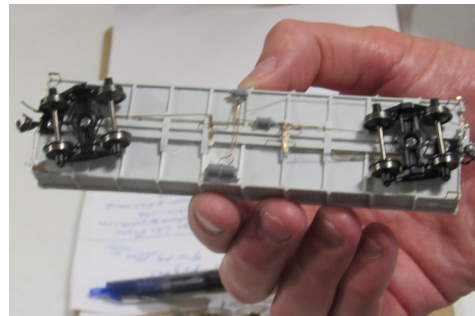
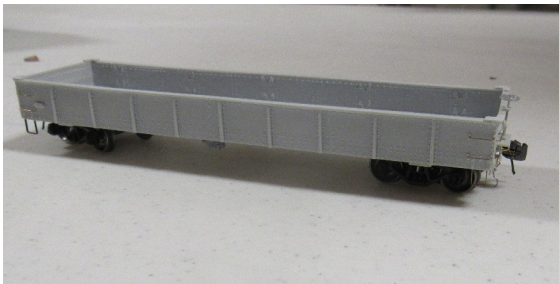
John Martin  
Steam Engine

Arcadia Bestey Railroad 2-6-0



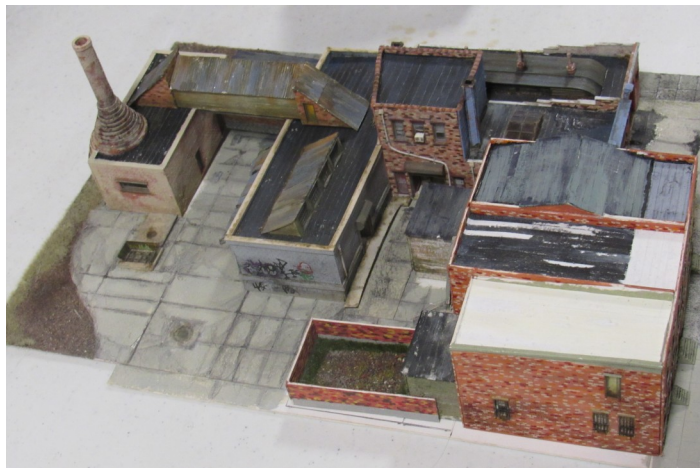
Mark Mincek  
Southern Low Side Gondola

A model of the Southern Low Side Gondola by Speedwitch. Next step is to paint, weather and add a load of pig iron.



Gail Braman  
N-Scale scratch built building

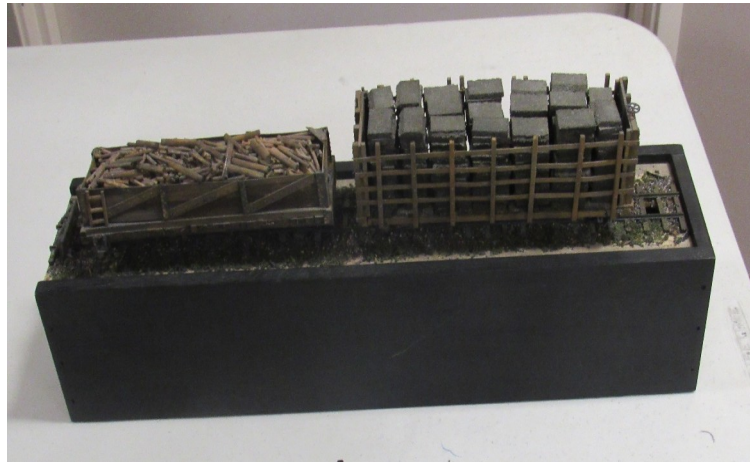
N-scale Camden Liberty Bottle works



Dan Shilt

Two H&LB RR flat cars

Tan Bark Car and a Cord wood Car



Irv Chmielewski

SP Log Car

SP stake log car. Plastic logs removed and real wood logs added.



John Peters

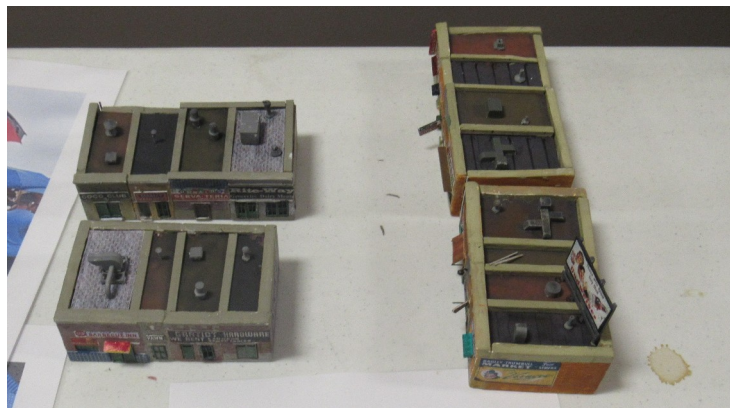
Buildings

Left

“Scrapped” Downtown Deco rescued from trash, rebuilt with improved detail and Detroit area signage.

Right

Downtown Deco stores with custom decals and Detroit area signage.



## **SCHEDULES**

For more information, contact the organization listed. Event Fliers are attached when available. Check with the venue before the event.

**July 14<sup>th</sup> U.P 4014 The Big Boy will be on display in Fostoria, Ohio**

**July 16<sup>st</sup>. Division Meeting Troy Christian Chapel**

**October 8-10<sup>th</sup> Zeeland, Mi. Regional Convention.**

**Check the Hot Box (our regional publication) for more details.**

**Train show and other event fliers are attached when available.**

### **Division Meeting**

**Live at Troy Christian Chapel**

**Thursday July 16, 7:00 pm**

#### **Clinic**

**by Tim Fisher**

**Photos from the 1950's through the 1980's by the late Dave Rigittko  
with an emphasis on Southern Michigan**

**Show and Tell**

**Anything from a Southern Michigan Railroad  
or current project.**

***Join us after the meeting for snacks and conversation at Leo's Coney Island,  
Walton & Livernois***