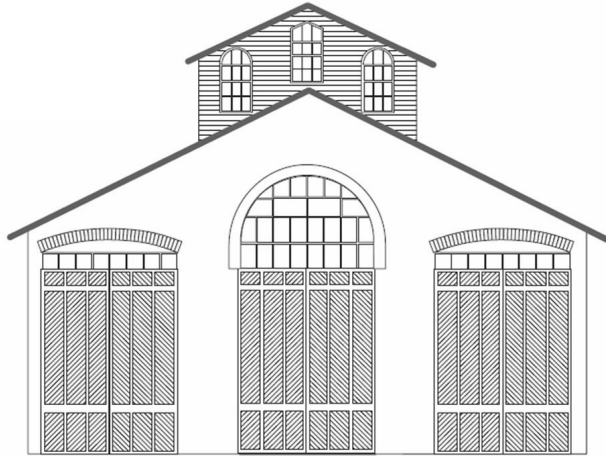


CAR



HOUSE

Jan 15, 2026



Div. 8 Website: <https://www.div8.NcrNMRA.org>

Website: <http://www.nmra.org/>



Call to Order: 7:02

Recognition of visitors and MMRs in attendance: Bruce DeYoung, Larry Wolohan, and Ron King

President's Page

One of my bigger projects that I've been working on over the last few months is getting my layout completely wired and ready for operation. With that in mind, this month I wanted to pass along a link that nearly everybody can probably use either when they're wiring their layout or get stuck on a DCC issue that you just can't figure out. When those occasions pop up where you need some technical help, check out the link below. The pop-ups are annoying but the information is very good

https://wiringfordcc.com/dcc_currents.htm

Hope to see you at our next meeting,

Mark

Clinic
Ron King, MMR

Ron demonstrated how he took seven off-the-shelf locomotives and added details to make them more accurate representations of specific prototype engines. While the locomotives were the same general type, there were noticeable differences based on the individual engine number.

He also showed the detailing work he did on steam locomotives, again transforming generic models into highly detailed, prototype-specific engines.

Ron walked through the detailing process he follows to produce high-quality models. Before starting work on a particular engine, he purchases a reference book containing detailed photographs of that specific locomotive. By following this approach, his finished models became almost exact replicas of the individual engines he was modeling. His clinic featured numerous pictures of the various steps he took on models as he worked on them.

BUSINESS MEETING ITEMS

All Members – Please check your NMRA membership cards and renew today. Insurance regulations require meeting participants be NMRA members {after three meetings}. Please stay current. You can renew at **NMRA.org**. There are so many benefits of membership, including discounts at major online retailers, information available on the website. Membership with digital delivery of the NMRA magazine is \$68 per year, \$92 with US mail delivery of the NMRA magazine.

Car House approved.

November Treasurer's report Dan Shilt: \$3,139.80 approved

With the start of the new year, the membership meeting fee is due. The fee is \$10 per year payable in January. Check with Dan Shilt, he will be happy to assist.

Regional AP update – A number of awards are in the works.

AP Corner

Structures, Structures, Structures

Bruce De Young, MMR
Division A.P. Coordinator

Since our last meeting, Mark Mincek and I have visited the layouts of Bruce Mack, John Martin, and Steve Weber in order to evaluate structures as these three members start working towards the structures certificate in the AP program.



Mark and I at Bruce Mack's Layout



Steve Weber's Abandoned Farm House



John Martin's Scratch Built House



Bruce Mack's "Mack's Deli"

Congratulations to all three modelers. Each earned at least one Merit Award!
If you are interested in getting involved in the A.P. Program, talk to me at one of our meetings, or send me an e-mail at: bbdeyoung@comcast.net.

Layout Tours: There will be tours of two layouts on February 22nd. The layout tours are hosted by John DePauw and Bob Stelmach. Flier is attached.

Operating Session Plans – Curt Danielewicz can be contacted if you would like to set up a session or be included in future Operating Session plans. Curt48044@Gmail.com

Door monitor at the church: February - Chris Dobies; March Bob Scherer
Thanks for volunteering. **Please consider volunteering for future months. It only requires a half hour of your time just before the meeting.** For security reasons the church door must remain locked at all times. Thanks for helping out the Division and keeping everyone safe.

Old Business –

- Mark is putting together a group to go to the Veteran’s hospital to perform maintenance of a layout. Mark will be contacting VA to set a final date.

New Business

- April 18th will be the spring model meeting in Toledo. This is the third year for this event. Board voted to provide \$500 funding safety net if event loses money.
- A member of the Stoney Creek club has macular degeneration and would like to try out a TCS UWT-50 or UWT-100 WiFi throttle. Mark can get you hooked up with Kevin Smith if you are willing to help.
- A local model railroader is looking for somebody to install 10 Tortoise switch machines. He will pay for the service. Let Mark know if you are interested.
- On May 16th The NYC Historical Society is having their convention in Kalamazoo. They are allowing non-members to take part in a train trip. Trip includes train ride seat, a lunch in Hillsdale and a bus ride from the Kalamazoo Delta Hotel to Pleasant Lake for the train ride, be picked up by the bus in Coldwater Mi., riding to the mid-Michigan Railroad location to see steam engines operate on the club track and the bus ride back to the Kalamazoo Delta Hotel.

Hints and Tips

- The Mentor/Mentee file (give help/receive help) is at https://docs.google.com/spreadsheets/d/1hj4moARyx4iKjpShtSzk8mVanFln9vq0/edit?usp=drive_link&ouid=116662642115004050447&rtpof=true&sd=true
- The private Clinton River Division Facebook group is at <https://www.facebook.com/groups/288929175921717/>
- An additional source of information to help with setting a timeline, check out the presentation “Modelers Guide Using Timelines to select eras and Focus your modeling BY John Burchnall. It is posted at <https://cincy-div7.org/how-to-articles>

Announcements

Please notify Irv Chmielewski (NCRDIV8SECRETARY@gmail.com) if you would like to have an announcement posted in Car House. Provide written details

- Phil Doolittle is bringing in magazines over the next few months. They are free to anyone to take.
- See fliers at end of Car House for future events including Detroit Model Railroad Club and a number of upcoming train show/sales.
- A list of train shows is also available on the website <https://www.trainshowlist.com>
- We were informed that non-members of the NYC RR Historical Society can purchase train ride tickets for the date of May 16, 2026, for \$60.00. This gives you a train ride seat, a lunch in Hillsdale and a bus ride from the Kalamazoo Delta Hotel to Pleasant Lake, IN for the train ride, be picked up by the bus in Coldwater, MI, riding to the Mid-Michigan Railroad location to see steam engines operate on the clubs track and the bus ride back to the Kalamazoo Delta Hotel. You do not need to attend their convention or be members of their society to ride the Saturday train ride. Registration will be on the web site. No self driving, everybody rides on the buses from the hotel and back to the hotel. More details and ticket purchases are at the the NYC Historical Society website when they get all set up. Department times for the buses from the Delta Hotel west of Kalamazoo will all be listed there. The planning team is still working out all of the details.

Show and Tell

Bob Stelmach

2-6-0 Steam Loco S Scale

This Loco started as a Bachman On30 and was regauged to S Scale. Details were removed and replaced with 3/16 scale parts. This Loco has a siphon pump made from carving up a John Deere tractor located on the tender.



Mark Mincek

Owl Mountain Models flat car

This was my Christmas present. Its a kit for an SP flat car that was used from 1927 to the 1970's



Warren Yohe

Refillable Paint Markers by Fuliao (on Amazon)

Empty paint marker set that can be filled with paint or stains.



Monthly Newsletter of the **Clinton River Division** of the North Central Region of the NMRA

Michael Kandolf
WM #5 Class D Shay

Just Couldn't resist



Ken Scherer
Christmas Presents

Hallmark Ornament
T Shirt (Train stuff making up the design).



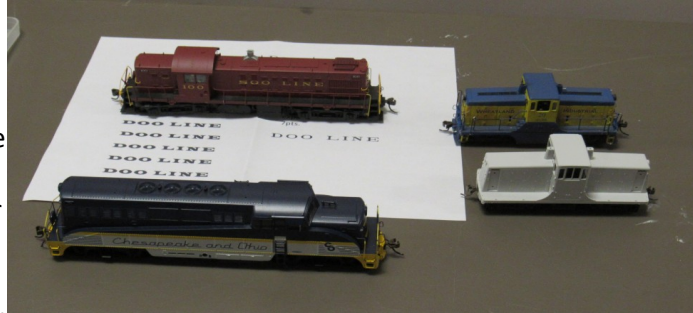
Gary Figi
B&O Steam Loco

Lionel- Blue Tooth Steam
4-6-2



Phil Doolittle
Christmas/Engines/Project

3 in 1 Show and Tell: Project to paint engines for the Doo Line Railroad. New paint scheme will be similar to the Wheeland Industrial 44Tonner. The Engines will be painted similar to the Soo Line engine, 2 RS1s and the BL2. This is a new Rapido engine, which also is this recent Christmas present. Progress so far is finely finding the font to use to match the Soo Line Railroad. Roman extended 7 point.



John Jackson
Steam Locomotives

My Original HO Locomotive Set circa 1960-61.



Bob Scherer
Gorre & Daphited Reefer

Gorre & Daphited Reefer - Bought with a Christmas Gift Card.



John Siekirk
Gallant's Tractor Sales

Current Project - Photographs on Work Bench.



Dave Thornton
Kit Bashed Diesel

O Scale Kit bashed Lionel NW-2 B&O
switcher.



Steve Weber
Current Project

Campbell maintenance shed



David Katona
Turntable

A work in progress. Kitbashing a 70 ft. turntable using a Central Valley plate girder bridge kit.



Ron King MMR
Erie #106 0-6-0

Made from a U.P. 0-6-0 to an Erie 0-6-0. Super detailing, paint, decals, and weathering.



Irv Chmielewski
Current project/Christmas Present,
Locomotives

Starting with a 4-6-2 Camel-back engine only produced by Mantua in 1991, I am trying to install a Digitrax SDH 167D Sound FX v.3 DCC decoder I received for Christmas.

UPDATE: the wiring in the engine's motor has fallen apart so now moving the decoder to a different engine.



Monthly Newsletter of the **Clinton River Division** of the North Central Region of the NMRA

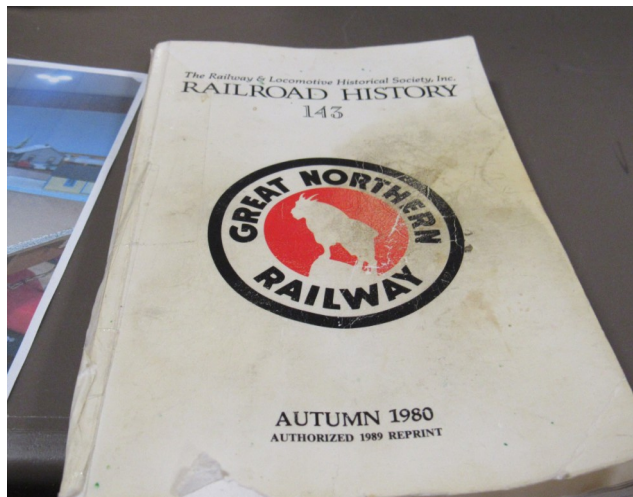
Larry Wolohan MMR
Locomotives

O Scale VO-1000 by the Car Works.

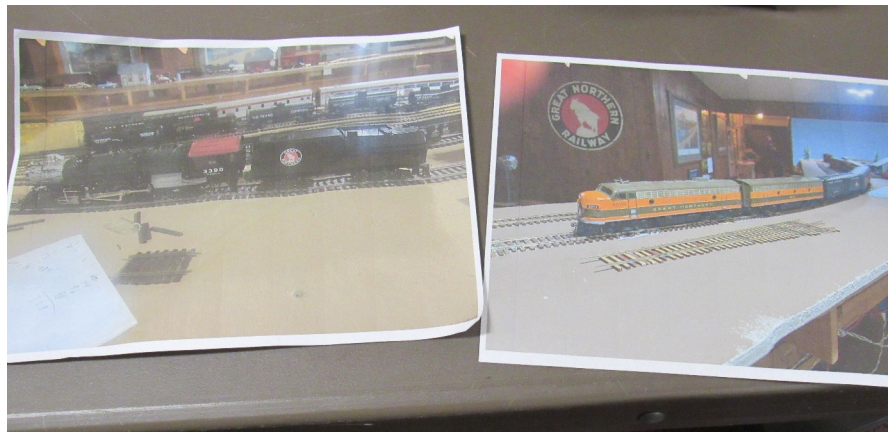


Two items - Show and Tell forms not submitted

1)



2)



SCHEDULES

For more information, contact the organization listed. Event Fliers are attached when available. Check with the venue before the event.

February 19th. Division Meeting Troy Christian Chapel
Sunday, Feb. 22, 2026 1-4 p.m. Division Layout Tours Open Houses
See Attached Fliers for more details.
Train show and other event fliers are attached

Division Meeting

Live at Troy Christian Chapel
Thursday February 19, 7:00 pm

Clinic
By Rich Mahony
Five Busy Railroad Spots On Your Layout.
Show and Tell
Industries or Current Project.

*Join us after the meeting for snacks and conversation at Leo's Coney Island,
Walton & Livernois*

**Celebrating our 90th year (and 51 years in Holly)!!!
THE DETROIT MODEL RAILROAD CLUB**

Presents

MICHIGAN'S LARGEST "O" SCALE MODEL RAILROAD CLUB

104 N. Saginaw, Holly, Michigan 48442 • 248-634-5811

See multiple sound-equipped radio-controlled trains
operating on 6500 feet of track.

This Victorian
Style Railroad
Depot was
designed and
built by
Dave Kunz.

This Depot has
won numerous
awards and has
returned to our
layout after
Dave's passing.



Dave Kunz

Photo courtesy of Weldon Greiger

Like us on
Facebook
@DetroitMRRRC

Visit our
website
dmrrc.org

Look for
us on
You Tube
DMRRC

Open House Info:

2025

Nov. 28, 29 & 30
Dec. 6 & 7
Dec. 13 & 14



2026

Jan. 10 & 11
Jan. 24 & 25
Mar. 7 & 8

2025

NEW HOURS

11 AM to 5 PM

ADMISSION

Adults(18-64): \$5.00
Seniors (65+): \$4.00
Kids (5-17): \$2.00
Kids under 5: Free

2026

NEW HOURS

Noon to 4 PM

Memberships Available. Join now for as little as \$30/year.
The DMRRC is a 501(c)(3) non-profit organization - Donations gladly accepted.
ADA Access Compliant

Central Region:

Take care: Gary A Figi • a.k.a. Train Room Gary • trainroom@gamil.com 248-563-2436



Master Schedule • NMRA 40 Home Layout Tours On My YouTube Channel Train Room Gary

<https://www.youtube.com/user/trainroomgary>

Episode #1 of 8 • January 8, 2026 @ 4PM EST



Bill McMillan - G • 1/29th
Irvin Chmielewski - HO
Mike Tranquilly - HO
Norm Logan - HO
Bill Neale - HO
Byrne Blumenstein • HO Scale

Episode #2 of 8 • January 22, 2026 @ 4:00 PM EST



Dan Lewis - N
Jim & Louis Dennis - HO
Norm Charbonneau - 3 Rail Scale
Gregory Rich - HO
John DePauw - HO

Episode #3 of 8 • February 12, 2026 @ 4:00 PM EST



Rad Jones - N
Robert Stelmach - S
Ron Gate - HO
Steve Smith - HO
Dick Tomlinson - O 2-Rail Scale

Episode #4 of 8 • February 26, 2026 @ 4:00 PM EST



Bill Bartlam - S
Gaylord Gill - S
Richard Harden - HO
Michael Burgett - HO
Saul Kalbfeld - HO

Episode #5 of 8 • March 12, 2026 @ 4:00 PM EST



Rick Ware - N HO O & G
Barry Hensel - HO
Doug Tagsold - 1/72 Scale
Jeff Fryman - HO
Jerry Sahagian - HO

Episode #6 of 8 • March 26, 2026 @ 4:00 PM EST



Jim Talbott - HO
Jim Tilly - HO
John Emley - HO
Michael Finkler - HO
Rick Lecki - HO

Episode #7 of 8 • April 9, 2026 @ 4:00 PM EST



Rick Norbert - HO
Ken Chick - N
Andy Keeney - HO
Robert Truax - HO
Chuck Hughes - HO
Ken Johnson - HO
Mark Cowles - N

Episode #8 of 8 • April 23, 2026 @ 4:00 PM EST



Dawn Autio & Tom Weaver - HO
Kevin Guthrie N
Howard Ziegel - O • City Street Cars
Ron King - HO
Michael Kissler - HO

Clinton River Division Layout Open House

SUNDAY, FEBRUARY 22, 2026

1:00-4:00 PM

John DePauw, 1303 Ridgewood Circle, Lake Orion, MI



John models the EJ&E main line in the Chicago area from South Chicago to Waukegan in HO Scale. The railroad is multi-level in a 60' x 38' space. It has five yards, four on the EJ&R and one on the BN, and it interchanges with all the various railroads serving the Chicago area. There are approximately 100 staging tracks. In an Op Session, the railroad can handle seven Yard Operators and 10 or more Mainline Engineers, plus two Dispatchers and a Trainmaster. Scenery is 90% complete.



Robert Stelmach, 1551 Hosner Rd., Oxford, MI



Bob's S Scale proto-freelanced layout, the Red Pine & Oxville RR, is a shortline that serves mid-Michigan in the 1930s. It has a NYC interchange, and it features a coal mine, gravel industry, logging operations, farming, and small-town businesses in an 18' x 24' space. Scenery is 85% complete, and the mainline is 110'. It has been published in several of the magazines (MR, NMRA Mag, S-Gauge).

