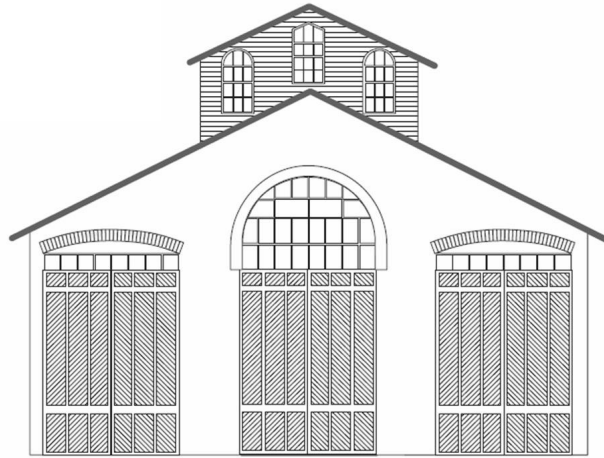


CAR



HOUSE

Nov. 20, 2025

Div. 8 Website: <https://www.div8.NcrNMRA.org>



Website:
<http://www.nmra.org/>



Call to Order

Call to Order: 7:02

Recognition of visitors and MMRs in attendance: Bruce DeYoung, Larry Wolohan, Greg Rich, and Ron King

President's Page

I'm passing along a neat tool that I found on one of my favorite online modeling groups. (More on that in my clinic this month).

If you go into the App Store for Mac, just search for "Model Paints". Below is a screenshot of the app you'll be looking for. This app allows you to scan the color of anything with your phone. The app will then give you the correct color and brand of modeling paint that you can use to replicate that color. It will also indicate the percent match that a suggested paint is to the desired color.

Android users need not fear. There is also an app available for Android that works the same way. It's called Hobby Color Converter.

Call it an early Christmas present!

Mac Apps

iPhone & iPad Apps



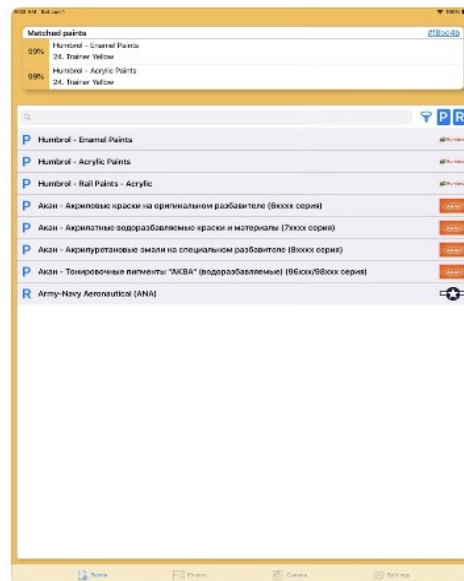
Model Paints

Database. Matching. Mixing.

Designed for iPad. Not verified for macOS.

Get

In-App Purchases



Hope to see you at our next meeting,
Mark

Clinic

Card Stock Structures

Greg Rich

Greg Rich's Method for Building Card Stock Structures

Greg Rich has developed a practical and repeatable process for creating detailed cardstock buildings for his N-scale layout. His workflow emphasizes careful planning, accurate scaling, layered construction, and realistic finishing techniques.

1. Start With Prototype Research

- Look for photographs of buildings that match the era, geography, and style of the area you're modeling.
 - Focus on structures that fit the available space and look appropriate for the railroad and region.
-

2. Scale the Building Using PowerPoint

- Import the structure photo into PowerPoint.
 - Scale the image to the exact N-scale dimensions you need.
 - This creates a visual reference that is both accurate and easy to print.
-

3. Create a Precise Paper Drawing

- Using the scaled image as a guide, draw the building by hand on plain paper.
 - Use a pencil and a straightedge ruler for clean lines.
 - Greg prefers using **millimeter measurements**—this makes scaling, adjusting dimensions, and transferring measurements much easier.
-

4. Make Copies on Heavy Paper

Take the completed drawing to a copy shop (Kinko's, Staples, etc.).

- Have **multiple copies** made on **heavy cardstock**.
 - These copies form the basis for layering, embossing, and cutting different wall components.
-

5. Constructing the Walls

1. Begin with the **base layer** of the walls.
2. Add additional layers to create:
 - window and door trim
 - arches
 - cornices
 - roof edges
 - recessed or raised wall sections

This layering is what gives cardstock buildings their depth.

6. Emboss Brick or Stone Textures

- Before gluing anything together, emboss the paper:
 - Use a stylus or similar tool
 - Press from the backside to raise mortar lines
- This adds a realistic, tactile brick or stone surface.

- Cut holes for windows and doors.
 - For easier alignment, make holes on the lower surfaces larger.
-

7. Prime All Surfaces

- Prime both the **inside** and **outside** of every piece.
 - This prevents warping, strengthens the cardstock, and ensures even paint coverage.
-

8. Painting the Structure

- Work from **bottom to top**:(the basic wall out to the top surface)
 - Save small details for the final stages.
-

9. Final Finish

- Once the structure is assembled and painted, spray the entire model with **Dullcote**.
- This seals the paint, protects the paper, and gives the building a realistic finish.
- Install windows and doors pre-painted with clear backing.

BUSINESS MEETING ITEMS

All Members – Please check your NMRA membership cards and renew today. Insurance regulations require meeting participants be NMRA members {after three meetings}. Please stay current. You can renew at **NMRA.org**. There are so many benefits of membership, including discounts at major online retailers, information available on the website. Membership with digital delivery of the NMRA magazine is \$68 per year, \$92 with US mail delivery of the NMRA magazine.

Car House approved.

November Treasurer's report Dan Shilt: \$3,001.83 approved

With the start of the new year, the membership meeting fee is due. The fee is \$10 per year payable in January. Check with Dan Shilt, he will be happy to assist.

Regional AP update – Merit Awards were presented to:

George Van Duyne
Master Builder Motive Power
For a super detailed steam engine



Gail Braman
Master Builder Buildings(2)



Bruce DeYoung MMR
For six cars awarded during the National
Convention



AP Corner

Mini-Scenes

Bruce De Young, MMR

Division A.P. Coordinator

The past few months we have been looking at various aspects of scenery with the thought of working towards the AP Scenery Certificate. This month we will look at Mini-Scenes as focal points in our scenery.

Mini-Scenes are those “scenes within scenes” that draw a viewer’s attention to where you want them to look (or draw their attention away from where you don’t want them to look.)

Here are some characteristics of Mini-Scenes:

- . They are small in size
- . They often depict action
- . Many times, they include animals or ‘little people’
- . Sometimes they create an element of surprise
- . May depict a familiar activity
- . They add visual interest to a larger scene

As the old saying goes, a picture is worth a thousand words, so let’s take a look at a few mini-scenes.







Perhaps, if you have youngsters visiting your layout, you might add a bit of whimsy to a mini-scene.



So, as you develop your scenery, include a few mini-scenes. They are fun to make, and bring smiles to a viewer's face when they discover them.

Until next month...

Layout Tours: There will be tours of two layouts in February. Details are forthcoming.

Operating Session Plans – Curt Danielewicz can be contacted if you would like to set up a session or be included in future Operating Session plans. Curt48044@Gmail.com

Door monitor at the church: December – Dan Shult; January John Jackson

Thanks for volunteering. **Please consider volunteering for future months. It only requires a half hour of your time just before the meeting.** For security reasons the church door must remain locked at all times. Thanks for helping out the Division and keeping everyone safe.

Old Business –

- Mark is putting together a group to go to the Veteran’s hospital to perform maintenance of a layout. Currently waiting for a date to be established

New Business

- Regional Board meeting was held on November 1st.
 - Elections to be held in the fall of 2026. More on that in the Hotbox as we get into the new year.
 - Next Div 6 meeting will count as the regional all member meeting. Members can call in or attend in person.
 - Proposal to dissolve the NCR was withdrawn and revised to creating a committee to make recommendations on how to improve things and increase membership.
 - All non-urgent major financial decisions put on hold until after recommendations are presented and discussed. Board voted to seed the convention with \$2,700. The division has no money. Funds to be paid
 - Grand Rapids (division 4) will be hosting the 2026 regional convention in October. Funds to be paid back as much as is available after convention expenses are paid.
 - April 18th will be the spring model meeting in Toledo. This is the third year for this event. Board voted to provide \$500 funding safety net if event loses money.

Hints and Tips

Monthly Newsletter of the **Clinton River Division** of the North Central Region of the NMRA

- The Mentor/Mentee file (give help/receive help) is at https://docs.google.com/spreadsheets/d/1hj4moARyx4iKjpShtSzk8mVanFln9vq0/edit?usp=drive_link&oid=116662642115004050447&rtpof=true&sd=true
- The private Clinton River Division Facebook group is at <https://www.facebook.com/groups/288929175921717/>

Announcements

Please notify Irv Chmielewski (NCRDIV8SECRETARY@gmail.com) if you would like to have an announcement posted in Car House. Provide written details

- See fliers at end of Car House for a future events including Detroit Model Railroad Club and a number of upcoming train show/sales.
- The Stoney Creek Model railroad club jointly with the Rochester Hills Museum will be presenting the 2025 Model Train Exhibit. See flier attached.
- A list of shows is also available on the website <https://www.trainshowlist.com>

All Aboard! Model Railroad Exhibit-Stoney Creek Model Railroad Club

This holiday display is sure to impress! The Stoney Creek Model Railroad Club has been planning this model train exhibit for years and cannot wait to share it with you! The Calf Barn will be filled with modules that have been painstakingly built in scale and show locations near and far. A scavenger hunt through the exhibit adds to the fun! This wonderfully detailed exhibit, All Aboard! Is a perfect family outing during the holiday season.

Rochester Hills Museum at Van Hoosen Farm

Holiday Dates: Trains run 12pm - 4pm

Dec. 6, 13, 14, 20, 21, 26, 27, 28, 29, 30`

Purchase Tickers at Museum

Admission Prices:

Museum Members Free - See Exceptions for 12/6 and 12/20

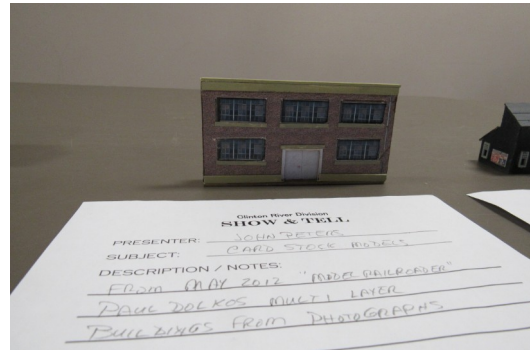
Public \$5/Adult, \$3/Seniors & Students – See Exceptions for 12/6 and 12/20

2024 Youtube Video: <https://www.facebook.com/watch/?v=597715109820580>

Show and Tell

John Peters
Card stock Model

From January 1975 "Railroad Modeler"
Matte Board, windows & Doors from scrap box. From May 2012 "Model Railroader" article by Paul Dolkos Multi Layer Buildings from photographs



Dan Lewis
Harlowton Station

Wood and paper
construction in N scale



Dave Thornton
Current Project

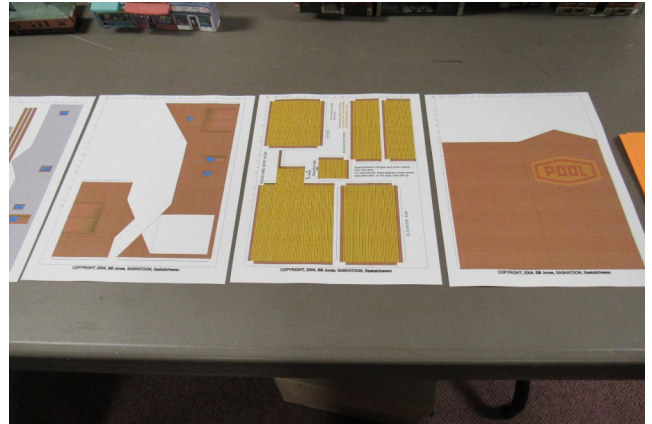
O scale auto frame gondola



Monthly Newsletter of the **Clinton River Division** of the North Central Region of the NMRA

Dan Mitzel
HO scale Coop grain elevator paper model

A "FREE" pdf file paper "KIT" for a wooden Canada pool grain elevator
For a free copy of the pdf file to print your own
Email Danmitzel@gmail.com



Bob Stelmach
Paper Buildings

Downloaded from the internet then printed on card stock paper, sprayed with clear lacquer. Can be sized to fit scale.



Gail Braman
Good Earth Peanut Co.

N scale scratch built.



Monthly Newsletter of the **Clinton River Division** of the North Central Region of the NMRA

Bruce De Young
Saw Shop (HO)

Totally made from paper and card stock



Phil Doolittle
Latest project

Starting Super Detail of Kato SD40 Cannon Fan
Kits: looking for ideas/suggestions on how to get
them (the fans) installed.



Irvin Chmielewski
Paper buildings

Row of shops copied from internet then built in
multiple layers to provide some definition.



SCHEDULES

For more information, contact the organization listed. Event Fliers are attached when available. Check with the venue before the event.

December – Detroit Model Railroad Club -Holly Mi. See flier below

December – Stoney Creek Model Railroad Club Display Rochester, Mi (see announcements)

December 18th. Division Meeting Troy Christian Chapel

Division Meeting

**Live at Troy Christian Chapel
Thursday December 18, 7:00 pm**

Clinic

By Mark Mincek

**How to Get Together a Freight Car Fleet
Show and Tell
Freight Cars or Current Project.**

*Join us after the meeting for snacks and conversation at Leo's Coney Island,
Walton & Livernois*

Train Shows or Other Events

Celebrating our 90th year (and 51 years in Holly)!!!
THE DETROIT MODEL RAILROAD CLUB
Presents
MICHIGAN'S LARGEST "O" SCALE MODEL RAILROAD CLUB
104 N. Saginaw, Holly, Michigan 48442 • 248-634-5811

See multiple sound-equipped radio-controlled trains operating on 6500 feet of track.

This Victorian Style Railroad Depot was designed and built by Dave Kunz.
This Depot has won numerous awards and has returned to our layout after Dave's passing.



Dave Kunz

Photo courtesy of Weldon Greiger

Like us on Facebook
@DetroitMRRC

Visit our website
dmrrc.org

Look for us on YouTube
DMRRC

Open House Info:

2025 Nov. 28, 29 & 30 Dec. 6 & 7 Dec. 13 & 14		2026 Jan. 10 & 11 Jan. 24 & 25 Mar. 7 & 8
---	---	---

2025 NEW HOURS 11 AM to 5 PM	ADMISSION Adults (18-64): \$5.00 Seniors (65+): \$4.00 Kids (5-17): \$2.00 Kids under 5: Free	2026 NEW HOURS Noon to 4 PM
--	--	---

Memberships Available. Join now for as little as \$30/year.
The DMRRC is a 501(c)(3) non-profit organization - Donations gladly accepted.
ADA Access Compliant



**7th Annual George F. Monaghan
Ole Toy Train Show**
Saturday, January 31, 2026

Monaghan Banquet Hall, 19801 Farmington Rd., Livonia, MI 48152
(between 7 and 8 Mile Rds.)



For Table Reservations
Call or email Brian Klotzer at:
313.255.0466
k432098@aol.com

Other Contacts:
Greg: club2690@gmail.com
Cliff: lip7@sbcglobal.net

Public Admission:
\$4.00 / Person, \$7.00 / Family
Early Birds / \$10.00 (10:00 am)
Show Opens to the Public:
11:00 am to 3:00 pm
Vendor Tables Set-up: 7:00 am

Table Donations:
Make checks payable to:
Monaghan Banquet Hall
19801 Farmington Rd
Livonia, MI 48152
(All Tables are 8 Feet Long)

Registration: \$25.00
Day of Show: \$30.00

Operating Train Layout
Food and Refreshments
Trains Tested
\$1.00 Raffle New Train Set

Come Join Us and Get a Table!

**** Note: No refunds for cancellations the week of the show****

Sponsored by: Monaghan Council # 2690

