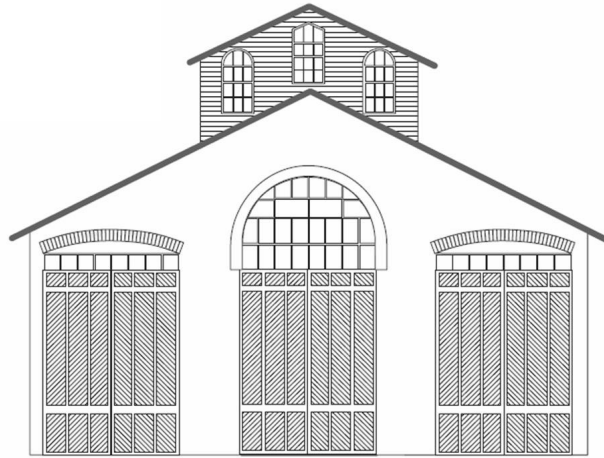


CAR



HOUSE

Oct. 16, 2025

Div. 8 Website: <https://www.div8.NcrNMRA.org>



Website:
<http://www.nmra.org/>



Call to Order

Call to Order: 7:02

Recognition of visitors and MMRs in attendance: Bruce DeYoung, Larry Wolohan, Greg Rich, and Ron King

President's Page

I've read on more than one occasion that if you want a highly prototypical model railroad, you shouldn't model the unusual. I'm not so sure that I always agree with that because sometimes modeling the interesting can also include the occasional oddity.

This month's link is an example of that. Of the many many commodities that has travelled on the rails over the years, one of the unusual ones is wine. In the case of Chateau Martin, their cars roamed the rails from 1940 all the way up to 1975. Attached is a link of some fun photos showing these cars over the years. These cars ended up just about everywhere, from coast to coast. It seems as if the boys in the paint shop were given free reign over how they wanted to paint up each car because it seems that no two ever left the shop looking the same. This could be a fun little project with some "modeler's license" built in if you wanted to paint up your own version. This is just a fun link this month, but something I thought you might enjoy.

https://coastdaylight.com/chatmart/cmwx_roster_1.html

I hope to see all of you at the November meeting!

Mark

Clinic

Due to technical difficulties, no clinic this month.

BUSINESS MEETING ITEMS

All Members – Please check your NMRA membership cards and renew today. Insurance regulations require meeting participants be NMRA members {after three meetings}. Please stay current. You can renew at **NMRA.org**. There are so many benefits of membership, including discounts at major online retailers, information available on the website. Membership with digital delivery of the NMRA magazine is \$68 per year, \$92 with US mail delivery of the NMRA magazine.

Car House approved.

September Treasurer's report Dan Shilt: \$2,981.83

With the start of the new year, the membership meeting fee is due. The fee is \$10 per year payable in January. Check with Dan Shilt, he will be happy to assist.

Regional AP update – A number of AP Awards and certificates are in process. If anyone received a merit award at the national convention, contact Bruce so it can be recorded for AP certificate consideration.

AP Corner

Structures As Scenery

Bruce De Young, MMR

Division A.P. Coordinator

Last month we looked as scenery from the view point of ground cover and foliage. There, the secret is layers, different textures and color variation. This month we will look at structures as scenic elements.

Looking at the requirements for the Scenery Certificate, we see that “structures are considered from the standpoint of prototypical suitability, placement, and appearance.” For the Scenery Certificate, structures include buildings, bridges, trestles, culverts, power poles, fences, signs, crossing gates, turntables, etc.

If you are following my YouTube Channel, you know that I'm a fan of little “Shacks, Sheds & Shanties”. Our scenes can accommodate many of those. Look at this prototype photo showing a logging railroad in Pennsylvania. There is one major

structure in the lower right, but just count up the remaining 'secondary' structures.



Could you model this scene with just the major structure and then trees along the tracks flowing into the background? Sure. Would that scene 'draw you in' the way the prototype scene does? Probably not.

Before you begin working on the development of a scene, examining prototype photos is a great idea. Another good idea is looking at the scenery developed by our fellow modelers. (Make the most of our layout visits!)

Here is a photo from the On3 layout of the late Doc Patti from back in New Jersey. He was a fan of including lots of structures in his scenes.



Giving a viewer a lot of things to look at is a great way to make a scene memorable.

Next month we will look at the power of ‘mini-scenes’.

Layout Tours: There will be tours of two layouts on Saturday, November 15th. From 12:00-4:00. (Detailed information is attached.)

- Bruce Enatt, 170 Lovell Dr. Troy, Mi
- John Martin, 6566 Pine Way Dr., Troy

Operating Session Plans – Curt Danielewicz can be contacted if you would like to set up a session or be included in future Operating Session plans. Curt48044@Gmail.com

Door monitor at the church: November – George Van Duyne December – Dan Shult

Thanks for volunteering. **Please consider volunteering for future months. It only requires a half hour of your time just before the meeting.** For security reasons the church door must remain locked at all times. Thanks for helping out the Division and keeping everyone safe.

Old Business –

- Mark is putting together a group to go to the Veteran's hospital to perform maintenance of a layout.
- Since the meeting, Chris Dobies has volunteered to take over website.
- Interest is being judged for a division diorama contest. Contact Mark if interested and to determine the what and when.
- Regional Board meeting will be held on November 1st. Elections are coming soon. Please run. Board meetings are only four time a year.

New Business

- Announcement that Jim Dennois was holding an open house/ train sale on Oct. 18th./

Hints and Tips

- The Mentor/Mentee file (give help/receive help) is at https://docs.google.com/spreadsheets/d/1hj4moARyx4iKjpShtSzk8mVanFln9vq0/edit?usp=drive_link&ouid=116662642115004050447&rtpof=true&sd=true
- The private Clinton River Division Facebook group is at <https://www.facebook.com/groups/288929175921717/>
- Mark showed a product⁵ for adding weight to rail cars, Liquid Gravity. It is a small bottle of tungsten pellets which can be pored into a car and then glue can be added to stabilize the results.

Announcements

Please notify Irv Chmielewski (NCRDIV8SECRETARY@gmail.com) if you would like to have an announcement posted in Car House. Provide written details

- See fliers at end of Car House for a future events including Detroit Model Railroad Club and a number of upcoming train show/sales.
- A list of shows is also available on a website <https://www.trainshowlist.com>

Show and Tell

Greg Rich
2 Shays

1. An On30 Brass 3 cylinder
2. An On30 Bachman 2 cylinder



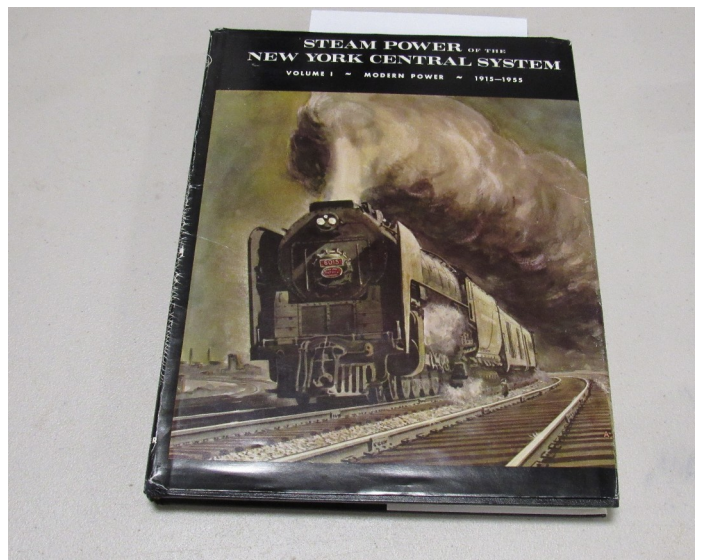
Phil Doolittle
NYC

NYC Observation Car, Heavyweight



Bill Bartlam
NYC Steam

Book "Steam Power NYC System 1915-1955
1 of 3 volumes on NYC Steam. 224 pgs. Many with
photos and drawings; and rosters for 1944 and later.
Author was Alvin Stauffer who researched it
extensively.



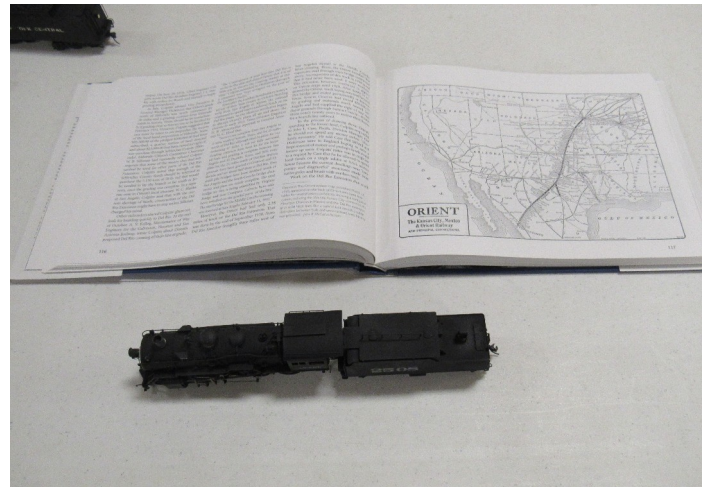
Fred Cosgrove
NYC Steam Locomotives

HO version of a NYC "Hudson" Locomotive.
This is a Tenshodo Factory painted engine. Was
part of Bossick's collection.



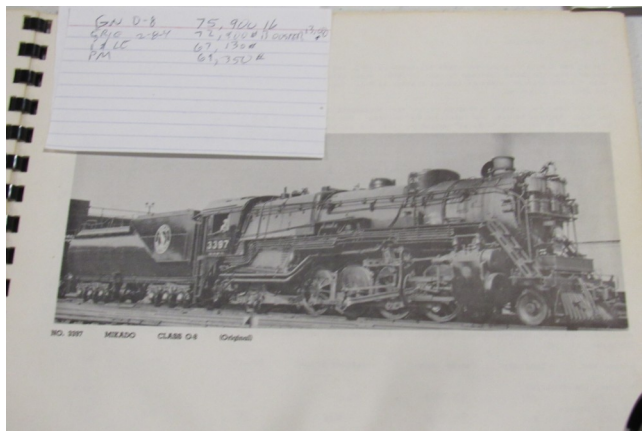
Tim Fisher
SF 2-8-0 #2508

Santa Fe acquired the Kansas City , Mexico &
Orient 1929 included Twenty Five 2-8-0 engines.
KCM&O bought it used from New York Central.



Larry Wolohon
Steam Loco's

Pic of "O" scale GN 0-8
HO model of William Rooks 1st loco on GN



John Peters
NYC in Michigan

N scale Key imports Brass
H10B Mikado
L4B Mohawk



Kent Aughe
Glue Stand (Pic not available)

3-D printed holder for Alene Tacky Glue (and other glue tubes)
Holds the glue tube or applicator upside down so glue is ready when needed.

Ron King MMR
NYCRR

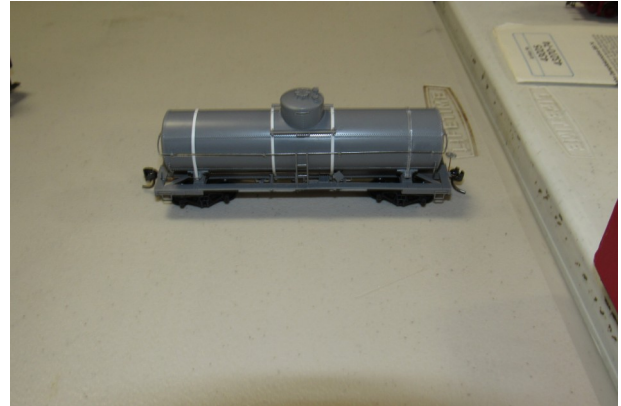
NYC Vanderbilt Hudson #5344. A 4-6-6 model
by Broadway Limited.



Monthly Newsletter of the **Clinton River Division** of the North Central Region of the NMRA

George Van Duyne
HO Scale tank car

Tichy HO Tank Car kit./ Assembly complete, ready for paint shop.

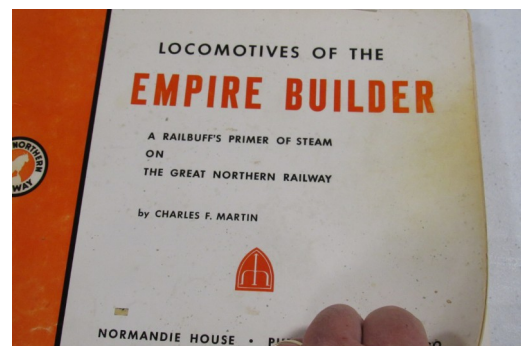
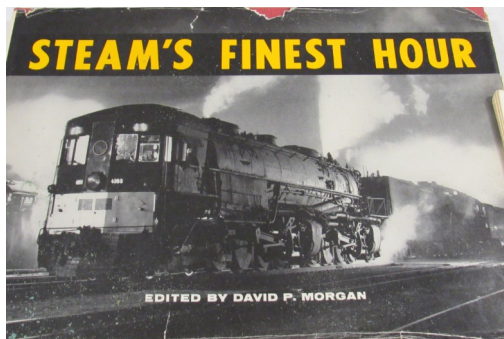
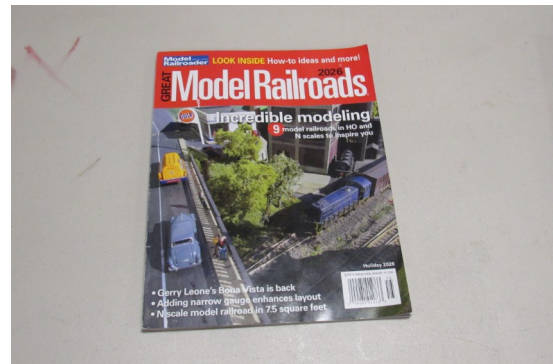


Robert Cabrera
Steam German Locomotive

Rocco Bramnd DC
EARLY 1900'S German federal Railway/berlin Passenger Railway.



Other Material shown but no description submitted.



SCHEDULES

For more information, contact the organization listed. Event Fliers are attached when available. Check with the venue before the event.

November 15 - Clinton River Division Layout Open House (see flier below).

November 21st - Clinton River Division Monthly Meeting Troy Christian Chapel

November 23rd – Southeastern Michigan Show and Sale with Division 6 Show and Workshops. (See flier below).

Division Meeting

**Live at Troy Christian Chapel
Thursday November 20, 7:00 pm**

**Clinic
Building with Card Stock
by Greg Rich
Show and Tell
Card Stock Buildings
or Current Projects**

*Join us after the meeting for snacks and conversation at Leo's Coney Island,
Walton & Livernois*

Clinton River Division Layout Open House

SATURDAY, NOVEMBER 15, 2025

12:00-4:00 PM

Bruce Ernatt, 170 Lovell Dr., Troy, MI

Bruce's Butte Mine & Eastern Railroad (BME is also Bruce's initial—Bruce Michael Ernatt) is a free-lanced HO basement empire (45' x 25'45'X24' Four levels / 35 staging tracks / 38' double ended yard) based on the Union Pacific. It depicts Cheyenne / Denver to Kansas City / Omaha. On the upper level the line runs from Jefferson City, MO to the coal fields in Thunder Basin, Grasslands, WY. Long trains, multiple engine lash-ups, and simplified switching are the order of the day. Bruce hosts regular Op Sessions, and the railroad is a delight to run.

The layout era is the 1970s to the present. It can run either loop-to-loop or point-to-point and features some 35 staging tracks. If you like prototypically long trains, you don't want to miss this one!

Park on my side of the street. Enter thru the garage "Watch your step."

Basement HO Layout non Handicaped.

15 in the basement at a time Clothes pin check in



John Martin, 6566 Pine Way Dr., Troy, MI

John's layout depicts two different areas. The first is an 8' x 8' L-shaped shelf representing a 1940s logging railroad in Arcadia, MI. Here, the railroad is the Betsey River RR, running from Arcadia to Copemish, a total of 17 miles. The main focus is the Arcadia Lumber Company, a single stall engine house, a train station, and a feed and grain store. There is an incline to the upper area.

The second area is approximately 12' x 20' depicting Saginaw on the Pere Marquette RR, set in the mid-1950s. The route runs from Saginaw to Ludington to Manistee, MI. The scenes consist of a round house, turntable, coal dump, lumber yard, and a large salvage company. In the near future I intend to have operations on this area as well as the shelf area.



Train Shows or Other Events



LANSING
TRAIN SHOW
MICHIGAN'S LARGEST TRAIN SHOW AND SALE
SPONSORED BY THE
LANSING MODEL RAILROAD CLUB



SUNDAY, NOVEMBER 9, 2025
10AM TO 4PM

MODEL AND TOY TRAINS
MODELING DEMONSTRATIONS
OVER 500 VENDOR TABLES

RAILROAD COLLECTIBLES
OPERATING DISPLAYS
FREE PARKING

MICHIGAN STATE UNIVERSITY PAVILION
4301 FARM LANE, EAST LANSING, MI 48910

FREE ADMISSION CHILDREN UNDER 12 &
SCOUTS IN UNIFORM **GENERAL ADMISSION \$8**

 Like us on
facebook
CC: 80091338

LMRC.ORG

 Follow us on
Instagram

NEW!! TWO events in one!! NEW!!

Rails on Wheels
SOUTHEAST MICHIGAN MODEL RAILROAD SHOW & SALES MARKET
and *DIVISION 6, NCR, NMRA*
46th MODEL RAILROAD SHOW & WORKSHOP



10am – 3pm Sunday
November 23, 2025

New Date!
New Location!

RR SHOW & SALES – see 130 tables of vendors selling all scales of new & used model train items – see model RR layouts

RR SHOW & WORKSHOP – see tables of demonstrations of “HOW TO DO” model railroading – basic kit building, historical displays, painting, weathering, track laying, Div 6 HO model RR

GREAT FUN FOR THE ENTIRE FAMILY! STOP BY TO SEE OR BUY! ASK QUESTIONS – GET ANSWERS!

Wayne County Community College
Ted Scott Campus
9555 Haggerty Road
Belleville, Michigan 48111



Admission - \$5 per person
under 12 is FREE
Early Bird entry 9am - \$10 per person
Vendor info - cdjhyoung@yahoo.com

**Celebrating our 90th year (and 51 years in Holly)!!!
THE DETROIT MODEL RAILROAD CLUB**

Presents

MICHIGAN'S LARGEST "O" SCALE MODEL RAILROAD CLUB

104 N. Saginaw, Holly, Michigan 48442 • 248-634-5811

**See multiple sound-equipped radio-controlled trains
operating on 6500 feet of track.**

This Victorian
Style Railroad
Depot was
designed and
built by
Dave Kunz.

This Depot has
won numerous
awards and has
returned to our
layout after
Dave's passing.



Dave Kunz

Photo courtesy of Weldon Greiger

Like us on
Facebook
[@DetroitMRRC](#)

Visit our
website
[dmrrc.org](#)

Look for
us on
You Tube
[DMRRC](#)

Open House Info:

2025

Nov. 28, 29 & 30
Dec. 6 & 7
Dec. 13 & 14



2026

Jan. 10 & 11
Jan. 24 & 25
Mar. 7 & 8

2025

NEW HOURS

11 AM to 5 PM

ADMISSION

Adults(18-64): \$5.00
Seniors (65+): \$4.00
Kids (5-17): \$2.00
Kids under 5: Free

2026

NEW HOURS

Noon to 4 PM

Memberships Available. Join now for as little as \$30/year.
The DMRRC is a 501(c)(3) non-profit organization - Donations gladly accepted.
ADA Access Compliant



**7th Annual George F. Monaghan
Ole Toy Train Show**
Saturday, January 31, 2026

Monaghan Banquet Hall, 19801 Farmington Rd., Livonia, MI 48152
(between 7 and 8 Mile Rds.)



Public Admission:
\$4.00 / Person, \$7.00 / Family
Early Birds / \$10.00 (10:00 am)

Show Opens to the Public:
11:00 am to 3:00 pm
Vendor Tables Set-up: 7:00 am

Table Donations:
Make checks payable to:
Monaghan Banquet Hall
19801 Farmington Rd
Livonia, MI 48152
(All Tables are 8 Feet Long)

Registration: \$25.00
Day of Show: \$30.00

Operating Train Layout
Food and Refreshments
Trains Tested
\$1.00 Raffle New Train Set

For Table Reservations
Call or email Brian Klotzer at:
313.255.0466
k432098@aol.com

Other Contacts:
Greg: club2690@gmail.com
Cliff: lip7@sbcglobal.net

Come Join Us and Get a Table!

**** Note: No refunds for cancellations the week of the show****
Sponsored by: Monaghan Council # 2690

**JAN 12
FEB 9
MAR 15
OCT 19
2025**
11AM TO 4PM

**\$5
ENTRY**

**TAYLOR
TOWN
TRAIN
SHOW**

22525 ECORSE RD. | TAYLOR, MI 48180
TAYLOR TOWN

EARLY BIRD SPECIAL \$10 FROM 10AM TO 11AM
KIDS FREE, PARKING FREE, FREE PLAY TABLES,
TRAINS ON DISPLAY ALL SCALES!
VENDORS, THOMAS THE TRAIN,
LIONEL, WALTHERS ATHREN, RAIL LINK,
AMERICAN FLYER

VENDOR TABLES JUST \$25 FIRST/ONLY
\$20 ADDITIONAL TABLES

MIKE 313.955.5523
VENDOR SETUP 7AM - 9:30AM

Taylor Town Train Show and Sale
February 15th 2026
March 15th 2026
April 12th 2026
October 11th 2026
22525 Ecorse Rd Taylor Michigan 48180
11am-4pm \$5
KIDS FREE
Vendor tables \$25 each
call Mike 3139555523

Taylor Town Train Show and Sale
Weathering class 1pm
\$10 (with purchase of train from a vendor)
Early Bird 10am-11am \$5
Over 150 vendors table
All scales
Free Parking
22525 Ecorse Rd
Taylor Michigan 48180
11am-4pm \$5 entry