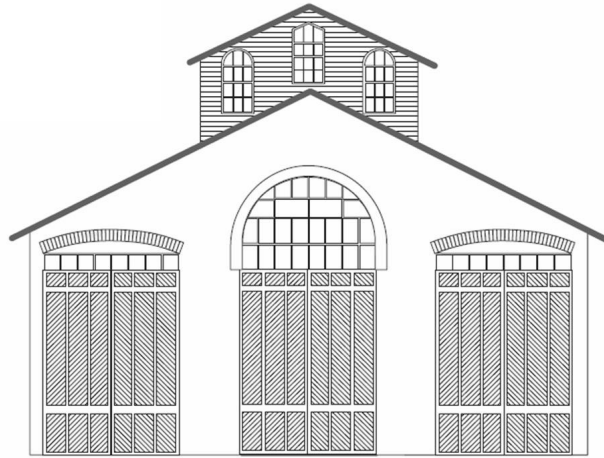


# CAR



# HOUSE

**Sept. 18, 2025**

Div. 8 Website: <https://www.div8.NcrNMRA.org>



Website:  
<http://www.nmra.org/>



### Call to Order

**Call to Order:** 7:02

**Recognition of visitors and MMRs in attendance:** Bruce DeYoung, Larry Wolohan, Greg Rich, and Ron King

### President's Page

With big name prototypical modelers like Pelle Soeberg being featured often in the model railroad press for his use of photos in modeling, the use of photos to increase layout realism seems to be a growing technique within the hobby. With that in mind, I'm passing along a link to a site that can serve as a central resource for some of the things that can come in handy during your modeling adventures. This site features downloadable files for things like building fronts, business signs, building textures, street signs, and stained glass windows. All you need to do is print out the files. With a little editing work, you can even customize your choices to fit your specific needs. On top of that, it's all available free of charge.

[https://bigindoortrains.com/indoor\\_resources/resources.htm](https://bigindoortrains.com/indoor_resources/resources.htm)

Hope you find this helpful,

Mark

### Clinic

B&O Steam Locomotives Video  
presented by Dave Thornton

A video created in 1954-1956 Show a wide range of steam locomotives still operating in the mid 1950's. Also included information when the specific engines in the video were taken out of service.

In 1955, the Baltimore & Ohio (B&O) Railroad was nearing the end of its steam era, but it still operated a diverse fleet of steam locomotives across its system. Here's a breakdown of the types in use during that time:

Steam Locomotive Types Used by B&O in 1955

Freight Locomotives

- 2-8-2 Mikado: Common for general freight duties.
- 2-8-0 Consolidation: Used for medium freight and branch line service.

Monthly Newsletter of the **Clinton River Division** of the North Central Region of the NMRA

- 4-8-2 Mountain: Handled heavier freight and some passenger service.
- 2-8-8-0, 2-8-8-2, 2-8-8-4 Articulateds: Massive locomotives for heavy drag freight service, especially on steep grades.

#### Passenger Locomotives

- 4-6-2 Pacific: Mainstay for passenger trains, including express and local services. A streamlined version was developed for premium named trains.
- 4-8-2 Mountain: Occasionally used for passenger service, especially on tougher terrain.

#### Switchers and Yard Engines

- 0-8-0 Switchers: Used in yards and terminals for assembling trains.
- 0-6-0 and smaller types: Found in lighter switching duties.

#### Notable Designs and Innovations

- B&O was an early adopter of Mallet-type articulated locomotives, including the famous 0-6-6-0 "Old Maude", the first Mallet in the U.S.
- While B&O experimented with compound steam, it generally favored simple articulated designs for reliability and ease of maintenance.

In the 1950's, B&O began retiring its steam fleet in favor of diesel-electric locomotives, marking the end of an era.

Also of interest in the video were track side buildings, such as a flag man's shed; no longer seen in railroads today.

## **BUSINESS MEETING ITEMS**

**All Members** – Please check your NMRA membership cards and renew today. Insurance regulations require meeting participants be NMRA members {after three meetings}. Please stay current. You can renew at **NMRA.org**. There are so many benefits of membership, including discounts at major online retailers, information available on the website. Membership with digital delivery of the NMRA magazine is \$68 per year, \$92 with US mail delivery of the NMRA magazine.

**Car House** approved.

**September Treasurer's report Dan Shilt:** \$3043.33;

**With the start of the new year, the membership meeting fee is due. The fee is \$10 per year payable in January. Check with Dan Shilt, he will be happy to assist.**

**Regional AP update** – A number of AP Awards and certificates are in process. If anyone received a merit award at the national convention, contact Bruce so it can be recorded for AP certificate consideration.

### **AP Corner**

#### **Scenery From the Ground Up**

Bruce De Young, MMR

Division A.P. Coordinator

We currently have a number of members working on their Scenery Certificates, so I thought that I would share a bit about how I approach scenery. There are obviously other equally successful approaches. As I think back to the Lionel layout of my youth, it is obvious that we have come a long, long way in terms of scenery materials available for us use. Back then, three different colored paints formed the basis of our scenery: brown for dirt, green for grass, and black for paved roads. Bushes, if any, would be sprigs of lichen from Life-Like. Trees were plastic castings from Plasticville, of course. Deciduous trees were flat, and evergreen trees were two different flat castings set at 90 degrees to each other.



Certainly not worthy of an A.P. Scenery Award, but we were happy youngsters!

Then came the ground foam revolution (after a spell of working with dyed saw dust). Boy, are we spoiled today, with many options for ground cover, weeds, bushes, and trees – all in an unbelievable variety of colors and textures.

As an aside, I have never been a fan of using ground foam to represent dirt. I like using real dirt. We had great dirt back in New Jersey. Here, at least in the lower peninsula, we tend to have a choice of sand or clay. So, when traveling by car, I usually have a few empty coffee cans in the car. If I see an inviting dirt pile, I stop and scoop some up in a can. Then the sifting begins. I use 3 different strainers producing medium, fine, and extra fine dirt for use on the layout. (No, I have never baked it, either.)

Generally speaking, good looking scenery is all about layers (producing depth) and variations in color. I start by painting the layout surface with my favorite dirt color latex paint. Often, I sift the first layer of ground cover (dirt or grass) directly into the wet paint. Once dry, additional layers of ground cover are sprinkled into a dilute mixture of white glue or matte medium sprayed over the lower layers. (Two to three layers usually suffice) Next comes the weeds, then the bushes, and finally the trees.





Generally, this produces a pleasing (and realistic) scene. (Note: the taller grass in both pictures comes from peeling off, and thinning, the top layer of grass mats purchased from Michaels or Hobby Lobby.)

In next month's column I will look at creating more 'industrial' scenery.

**Layout Tours:** Next Tours in our Division will be scheduled for the Fall. Further details will be available next month.

**Operating Session Plans** – Curt Danielewicz can be contacted if you would like to set up a session or be included in future Operating Session plans. [Curt48044@Gmail.com](mailto:Curt48044@Gmail.com)

**Door monitor** at the church: October - Kent Aughe; November – George Van Duyne

Thanks for volunteering. **Please consider volunteering for future months. It only requires a half hour of your time just before the meeting.** For security reasons the church door must remain locked at all times. Thanks for helping out the Division and keeping everyone safe.

## Old Business –

None this month

## New Business

- Looking for a website volunteer. (Since the meeting, volunteer has come forward.)
- Mark is putting together a group to go to the Veterans hospital to perform maintenance of a layout.
- Interest is being judged for a division diorama contest. Contact Mark if interested and to determine the what and when.
- Items of interest at next Regional board meeting.
  - Proposal from Barry Hensel for the region to donate \$5,000 to a movie production.
    - Consensus was to route money to the divisions.
  - Requesting input on a counter proposal to restrict donations only to things that can be shown to directly benefit the membership of the NCR. (Consensus agreed).
  - Proposal from Scott Kremer to dissolve the NCR.(consensus -NO)
  - Regional board meeting coming up Nov. 1<sup>st</sup>. Elections are coming up soon. Please run! Also, Board member should publicize upcoming elections to get new participants on the board).

## Hints and Tips

- The Mentor/Mentee file (give help/receive help) is at [https://docs.google.com/spreadsheets/d/1hj4moARyx4iKjpShtSzk8mVanFlN9vq0/edit?usp=drive\\_link&ouid=116662642115004050447&rtpof=true&sd=true](https://docs.google.com/spreadsheets/d/1hj4moARyx4iKjpShtSzk8mVanFlN9vq0/edit?usp=drive_link&ouid=116662642115004050447&rtpof=true&sd=true)
- The private Clinton River Division Facebook group is at <https://www.facebook.com/groups/288929175921717/>
- For those on Medicare Part D (Medicare Advantage) ask your insurer if they can give you a “Grouper” discount. This covers your NMRA dues.
- Since 2011, there is a super-size model railroad in Downtown Toronto. Website is [little-canaanada.ca](http://little-canaanada.ca) (not a typo it is **.CA** not COM)

## Announcements

Monthly Newsletter of the **Clinton River Division** of the North Central Region of the NMRA

***Please notify Irv Chmielewski ([NCRDIV8SECRETARY@gmail.com](mailto:NCRDIV8SECRETARY@gmail.com)) if you would like to have an announcement posted in Car House. Provide written details***

- See fliers at end of Car House for any future events.
- A list of shows is also available on a website <https://www.trainshowlist.com>

## Show and Tell

John Jackson  
Terminal Connectors

Box Terminals to connect Wallwarts to power electrical accessories i.e. lights.



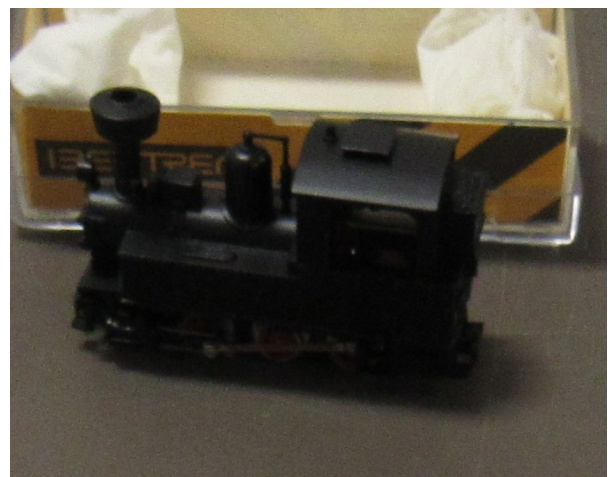
Phil Doolittle  
Latest Project

120' Pratt 2truss bridge – Kitbashed from a 150' Pratt truss bridge kit buy Central Valley - Bridge book by Model Railroader shows prototype



Fred Cosgrove  
Steam Locomotives

0-6-0t by Bertin HOn30



Greg Rich MMR  
Scratch built building

Building image found on internet. Built from card stock and paper. Prototype building stands in Buffalo, NY.



Steve Weber  
Train Show/Yard Sale

Funaro & Camerlengo - Hopper Kit  
Accurail - Sheath boxcar - DT&T  
Campbell - Pump House kit



Tim Fisher  
Santa Fe 4-6-4

3450-3459 ten engines built by Baldwin 1925

Wheel	Boiler pressure	Traction
75"	220	44900

rebuilt in 1939

Wheel	Boiler pressure	Traction
79"	230	43300

346-3465 Six engines built by Baldwin 1937

Wheel	Boiler pressure	Traction
84"	300	49300

3450 Streamlined @ painted Blue



Ron King MMR  
steam Locomotive A&E RR 4-8-2

Model by Bachmann of a USRA 4-8-2  
Super Detailing & weathering for the  
Allegheny & Eastern on my layout



Gaylord Gill  
S Scale water tower

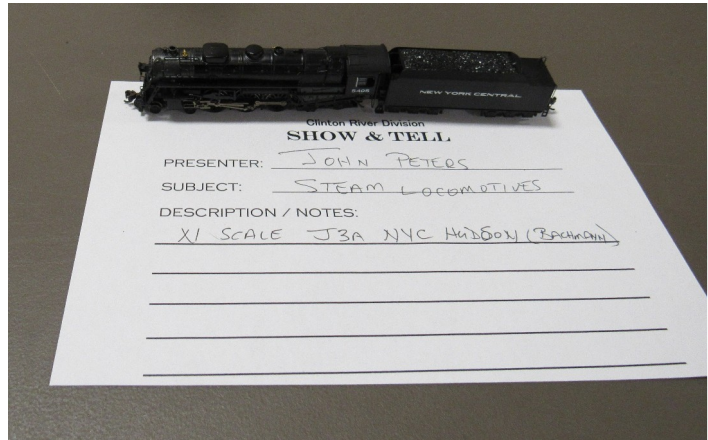
Scratch built many years ago – what's current is an  
article I'm about to submit to Dispatch (S scale  
pub.) Tank is formed around an incandescent light  
bulb. Safety cage hoops cut individually from brass  
tubing.



Monthly Newsletter of the **Clinton River Division** of the North Central Region of the NMRA

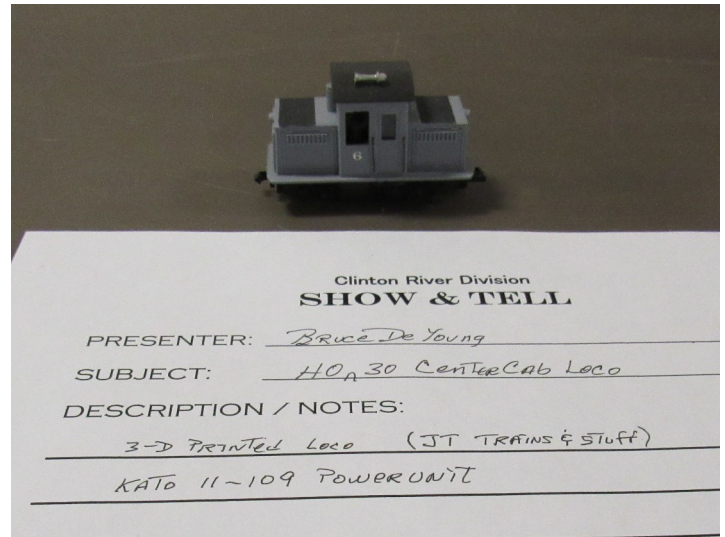
John Peters  
Steam Locomotives

X1 scale J3A NYC Hudson (Bachmann)



Bruce De Young MMR  
HO<sub>n</sub>30 Center Cab Locomotive

3-D printed loco (JT Trains and Stuff)  
Kato 11-109 power unit



Larry Wolohon MMR  
Steam Locomotive

O Scale GN E-6 4-6-0 with sound



## **SCHEDULES**

For more information, contact the organization listed. Event Fliers are attached when available. Check with the venue before the event.

**October 16<sup>th</sup> - Clinton River Division Monthly Meeting Troy Christian Chapel**  
**November 23<sup>rd</sup> – Southeastern Michigan Show and Sale with Division 6 Show and Workshops. (See flier below).**

### **Division Meeting**

**Live at Troy Christian Chapel and on Discord**  
**Thursday October 16, 7:00 pm**

**Clinic**  
**New York Central Steam in Michigan**  
**by**  
**John Peters**

**Show and Tell**  
**Steam locomotives or Current Projects**

*Join us after the meeting for snacks and conversation at Leo's Coney Island,  
Walton & Livernois*

**NEW!! TWO events in one!! NEW!!**

*Rails on Wheels*  
**SOUTHEAST MICHIGAN MODEL RAILROAD SHOW & SALES MARKET**  
and *DIVISION 6, NCR, NMRA*  
**46th MODEL RAILROAD SHOW & WORKSHOP**



**10am – 3pm Sunday**  
**November 23, 2025**

*New Date!*  
*New Location!*

**RR SHOW & SALES** – see 130 tables of vendors selling all scales of new & used model train items – see model RR layouts

**RR SHOW & WORKSHOP** – see tables of demonstrations of “HOW TO DO” model railroading – basic kit building, historical displays, painting, weathering, track laying, Div 6 HO model RR

**GREAT FUN FOR THE ENTIRE FAMILY! STOP BY TO SEE OR BUY! ASK QUESTIONS – GET ANSWERS!**

Wayne County Community College  
Ted Scott Campus  
9555 Haggerty Road  
Belleville, Michigan 48111



Admission - \$5 per person  
under 12 is FREE  
Early Bird entry 9am - \$10 per person  
Vendor info - [cdjhyoung@yahoo.com](mailto:cdjhyoung@yahoo.com)