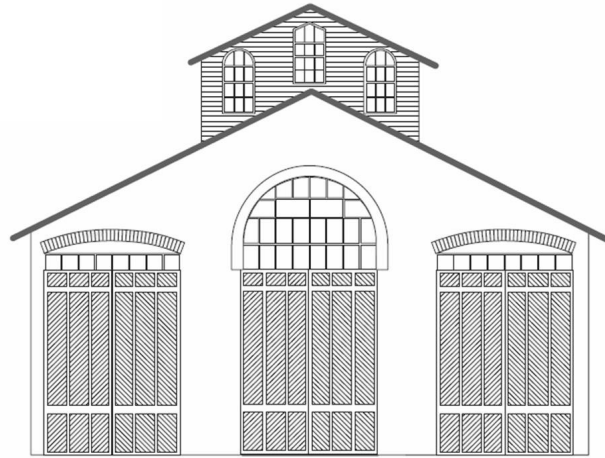


CAR



HOUSE

May 15, 2025

Div. 8 Website: <https://www.div8.NcrNMRA.org>



Website:
<http://www.nmra.org/>



Call to Order

Call to Order: 7:02

Recognition of visitors and MMRs in attendance: Dan Lewis, Bruce DeYoung, Larry Wolohan, Ron King, and Jim Zinser

Presidents Page

It's hard to believe, but the National Convention is almost here. With that in mind, my message this month is a little different than usual. When the convention planning was first getting off the ground, I volunteered to be the Division 8 Volunteer Coordinator. It's now time to get the details worked out. A couple of months ago, many of you were gracious enough to volunteer to help make the convention a success. I've taken that information and created a schedule of volunteers to cover some of the convention activities. Below is that schedule. I'm requesting that everybody take a look at it, and make sure you are ok with your time slot(s). Fear not, these are short time periods, and I spread the work out to everybody. If you do have an issue with your volunteer time slot, please let me know by sending an email to:

NCRDIV8PRESIDENT@gmail.com

Again, I want to thank everybody who is volunteering!

Mark

National Contest Room			Registration Desk			Yard Sale		
Monday	1pm - 4pm	George VanDuyne	Thursday	noon - 2pm	Dave Thornton	Wednesday	9am - 11am	Dave Thornton
	4pm - 6pm	Dan Lewis		2pm - 4pm	Larry Wolohan		11am - noon	Scott Swinger
Tuesday	9am - noon	Bob Scherer		7pm - 8pm	Tim Fisher	Thursday	1pm - 4pm	George VanDuyne
	noon - 2pm	Larry Wolohan	Friday	noon - 2pm	Bob Scherer		1pm - 4pm	Rich Wahl
	2pm - 4pm	John Jackson		2pm - 4pm	Ken Scherer		1pm - 4pm	Steve Weber
	4pm - 6pm	Kent Aughe	Friday				1pm - 4pm	Ken Scherer
Wednesday	9am - noon	John Gavasso					1pm - 4pm	Bob Scherer
	noon - 2pm	Sam Tabar					4pm - 6pm	Gail Braman
	2pm - 5pm	Gregg Wujcik					4pm - 6pm	David Rever
5pm - 7pm	David Rever				4pm - 6pm		Warren Yohe	
							4pm - 6pm	John Jackson
							4pm - 6pm	John Gavasso
							Friday	1pm - 4pm
						4pm - 6pm		Steve Weber

Mark

Clinic

Detroit Model Railroad Club Working signals.

Presented by Don James

The current signal system plays a crucial role in ensuring smooth operations for both Open House continuous train running and club operating sessions. With a layout featuring 300 turnouts—only 30% of which are visible—it is essential for operators to keep trains running without running into each other.

Turnout Direction & Track Occupancy

1. The system presently displays three aspects: Clear, Approach, and Stop.
2. The membership would like to have many more aspects, but the system and support can not provide them.
3. The logic required for these indications is highly complex, leading to operational challenges.

Equipment & Maintenance Concerns

- The signal system consists of a mix of donated and varied equipment, creating compatibility and maintenance issues.
- Currently, only one person, with occasional assistance, handles all maintenance, which poses long-term sustainability risks.

Electrical Complexity & Membership Needs

- Various electrical elements—including auto reverses and Frog Juicers—introduce additional complications.
- Stopping points are inconsistently defined, leading to operational uncertainties.
- A balance must be struck between the expectations of the membership and the practical limitations of system complexity.

BUSINESS MEETING ITEMS

All Members – Please check your NMRA membership cards and renew today. Insurance regulations require meeting participants be NMRA members {after three meetings}. Please stay current. You can renew at **NMRA.org**. There are so many benefits of membership, including discounts at major online retailers, information available on the website. Membership with digital delivery of the NMRA magazine is \$68 per year, \$92 with US mail delivery of the NMRA magazine.

Car House approved.

February Treasurer's report Dan Shilt: \$3073.31; No Expenditures Approved.

With the start of the new year, the membership meeting fee is due. The fee is \$10 per year payable in January. Check with Dan Shilt, he will be happy to assist.

Regional AP update – A number of certificates are under way.

AP Corner

“What's In the Works?”

Bruce De Young, MMR
Division A.P. Coordinator

This month we will take a look at the work of two members: Gail Braman and Dave Katona. At our April meeting, Greg Rich and I evaluated two of Gail's structures. Here are some photos of one of those structures – the B&H International Auto Store complex in Camden, NJ. As she often does, Gail depicts an old structure that has been transformed in use over time. In this case, the Auto Parts Store was originally a Livery and a feed store. Here you can see the overall structure along with some of the paperwork.



As you look at these photos, keep in mind that it is an N-Scale structure, and virtually everything you see has been made of card-stock and/or paper. One of the benefits of sitting with the modeler while evaluating a model is that you get to ask him/her “how did you do that?” In looking at that brick wall, I might have assumed that I was looking at a brick paper applied over a sub-wall. Not so. Gail actually cut all those bricks (1mm x 2mm) into the card-stock wall, using an X-Acto Knife. She then painted each brick individually. Windows are framed from 60lb paper and the frames are made from ten separate pieces. The window mullions are made from brush bristles. The window air conditioner is layered, glued, and varnished shirt board. You get the idea.



This is scratch building at a ‘top tier’ level. It should not be surprising to learn that this structure earned 112 points and a Merit Award.

A few days later we had one of our Layout Open Houses, and Bonnie and I had the pleasure of visiting Dave Katona’s layout. I had asked Dave if he had the Golden Spike, and when I found out that he had not, I brought along the necessary paperwork.

Among Dave's work, we were treated to seeing his collection of re-painted and lettered motive power. Beautiful work indeed.



Another treat was Dave's Scale Track. Now that was some fancy track work! But, if I had to pick a favorite, it would be this mini-scene.



Perhaps I enjoyed that scene so much because there was a similar underpass in our old stomping grounds right up by the NY/NJ border where US Route 202 crossed under the old Erie RR Mainline (now used jointly by NS, New Jersey Transit, and Metro North RR.). Although well marked, I lost track of how many box trucks I saw wedged under the tracks there.

Well, that's it for this column. In one of our upcoming meetings, you will see Dave receive his Golden Spike Certificate, and see Gail obtain her first (and second) Merit Awards as she works towards here Structure Certificate. Stay tuned!

Layout Tours: Next Tours in our Division will be scheduled for the Fall. Many of our members layouts are open as part of the National Convention.

Operating Session Plans – Curt Danielewicz can be contacted if you would like to set up a session or be included in future Operating Session plans. Curt48044@Gmail.com

Door monitor at the church: June-Eric Turin; Aug- ?

Thanks for volunteering. Please consider volunteering for future months. It only requires a half hour of your time just before the meeting.. For security reasons the church door must remain locked at all times. Thanks for helping out the Division and keeping everyone safe.

Old Business –

- **Reminder that \$10 User fees for 2025 is due.**

New Business

- Mark will be reaching out to Scott Kremer to get information on the volunteers. (Information is included in President's Page above)

Hints and Tips

- When using newly purchased electronics, use a meter to check that everything is compatible. A power supply like a "wall wart" can put out a different voltage than the rated amount depending on the current draw, so use a meter to check what the output is.
- NCE radio controllers are coming into stores.
- The Mentor/Mentee file (give help/receive help) is at https://docs.google.com/spreadsheets/d/1hj4moARyx4iKjpShtSzk8mVanFln9vq0/edit?usp=drive_link&oid=116662642115004050447&rtpof=true&sd=true
- The private Clinton River Division Facebook group is at <https://www.facebook.com/groups/288929175921717/>
- For those on Medicare Part D (Medicare Advantage) ask your insurer if they can give you a "Grouper" discount. This can pay you for your NMRA dues.

Announcements

Monthly Newsletter of the **Clinton River Division** of the North Central Region of the NMRA

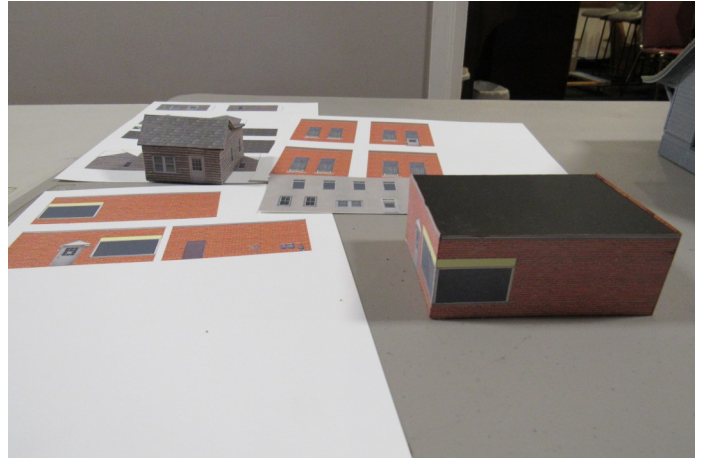
Please notify Irv Chmielewski (NCRDIV8SECRETARY@gmail.com) if you would like to have an announcement posted in Car House. Provide written details

- As per a member vote during the March meeting, on-line access will no longer be available. However, The NMRA Discord portal is still alive. Check it out
- A presentation on the steps necessary to complete the onboarding process for NMRA Discord is on our website.
 - For information on how to connect to the NMRA Discord portal go to the Div 8 web page <https://div8.ncrnmra.org/wp-content/uploads/2024/04/Discord-Instructions.pdf>
 - Other Discord instructions are available on the NMRA website under presentations.
- See fliers at end of Car House for any future events.

Show and Tell

David Katona:
Paper Printed Buildings

Using inexpensive "Model Builder" software from Evans Designs to create paper building sides, printed on card-stock and glued onto a foam-core structure. These are stand-ins for buildings that I will eventually scratch build better models. This way I can judge the size and how they will fit into the finished scene.



Ron King MMR
Diesel Transfer Unit by Lima

Prr Lima-Hamiltons transfer unit #5871
Paint, Decals, and Weathered
New Bowser Trains from an AS 6#6



Jim Zinser
Dwarf Signals

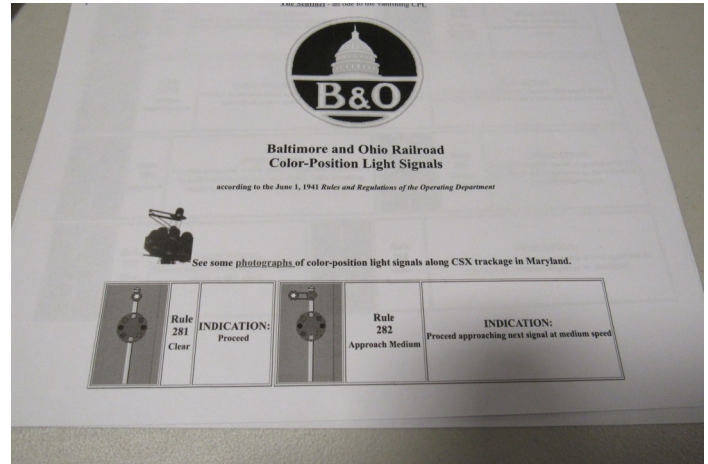
Tomar Dwarf search light signals
3-color LED's



Monthly Newsletter of the **Clinton River Division** of the North Central Region of the NMRA

Dave Thornton
Signals

B&O Signal Aspects documentation



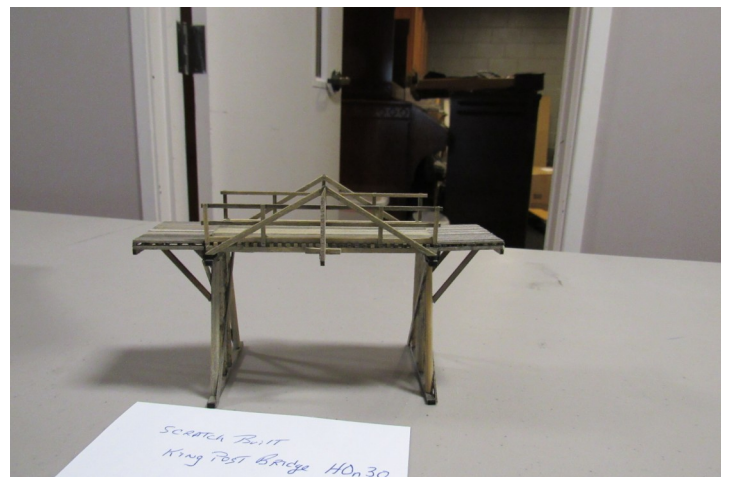
Tim Fisher
Laser kit small house

Building is a Blair Line kit



Bruce DeYoung
HO scale King Post Bridge

Built back in New Jersey. Adopted to new layout – Recent project



Larry Wolohan
Signals /Current Project

O scale crossing kit
O scale electric R.R. crossing



Ken Glaza

1 to1 scale crossing signal



Gale Braman

N scale paper model



SCHEDULES

For more information, contact the organization listed. Event Fliers are attached when available. Check with the venue before the event.

June 19th - Clinton River Division Monthly Meeting Troy Christian Chapel

July 14-19 - NMRA National Convention go to NMRA2025.com for registration and other details

Division Meeting

**Live at Troy Christian Chapel and on Discord
Thursday June 19, 7:00 pm**

Clinic

Video on B&O Steam

Presented by Dave Thornton

Show and Tell – Steam Engines or Current Project

*Join us after the meeting for snacks and conversation at Leo's Coney Island,
Walton & Livernois*