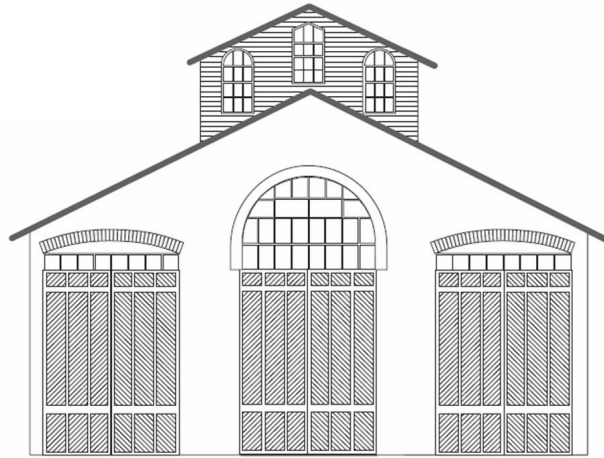


CAR



HOUSE

April 17, 2025



Div. 8 Website: <https://www.div8.NcrNMRA.org>

Website:
<http://www.nmra.org/>



Call to Order

Call to Order: 7:01

Recognition of visitors and MMRs in attendance: Dan Lewis, Bruce DeYoung, Larry Wolohan, Ron King, and Jim Zinser

Presidents Page

In the spirit of this month's excellent clinic by Rad Jones on detailing your layout scenes, I'm passing along a link that documents my all time favorite layout. Yes, it seems that any time there is a discussion on detailed layouts, the Franklin and South Manchester always seems to come up, and our post-meeting dessert conversation this month proved that once again. There are lots of photos here that you can use as inspiration for detailing your own layout scenes. Hope you enjoy this and I'm looking forward to seeing everybody at our meeting next month!

<https://modelersforum.com/index.php?board=35.0>

Mark

Mark

Clinic

Small Scenery Details By Rad Jones

Rad's presentation, "***Bring Life to Your Railroad,***" will be a PowerPoint talk showcasing some of the techniques he's used to bring his model railroad to life. Many of us likely share similar experiences—people, places, and scenery from real railroads that we've incorporated into our layouts.

We should aim to create *living scenes* throughout our railroads. These vignettes add depth and increase the visual distance of our layouts. Try to tell a story by including figures like people, dogs, birds, and other small details. Use mini-scenes across your layout to capture interest and encourage viewers to explore the space.

On longer stretches of track, add curves to enhance the illusion of distance. Introducing mini-scenes along these curves can further draw attention and make the layout feel more expansive.

Don't forget about signage—signs provide both direction and character. Here's a tip: print signs on photo paper. The glossy finish gives the appearance of metal-backed signs, and the photo paper is sturdy enough to hold its shape while still blending naturally into the scene.



BUSINESS MEETING ITEMS

All Members – Please check your NMRA membership cards and renew today. Insurance regulations require meeting participants be NMRA members {after three meetings}. Please stay current. You can renew at **NMRA.org**. There are so many benefits of membership, including discounts at major online retailers, information available on the website. Membership with digital delivery of the NMRA magazine is \$68 per year, \$92 with US mail delivery of the NMRA magazine.

Car House approved.

February Treasurer's report Dan Shilt: \$3023.31 34.08 APS Supplier, Collected 5 user fees. Approved.

With the start of the new year, the membership meeting fee is due. The fee is \$10 per year payable in January. Check with Dan Shilt, he will be happy to assist.

Regional AP update – Bruce DeYoung is Division 8 AP Chairman. Contact him if you are interested in getting an AP certificate. Bruce would be happy to assist you. He reported that a number of A.P. certificates applications are in process. Bruce has a plea for volunteers. If you are an MMR, or a Certificate holder in one of the six A.P. categories, and are willing to serve on an evaluation team, please send me an e-mail indicating that willingness. Just a simple e-mail with your name, NMRA Number and expiration date, and the certificates you hold (and would like to help evaluate) sent to bbdeyoung@comcast.net will suffice.

Steve Webber was presented the Master Builder – Scenery AP award.



AP Corner

“A Look at The Scenery Certificate”

Bruce De Young, MMR
Division A.P. Coordinator

Perhaps because at our last Division Meet, I presented to Steve Weber his Scenery Certificate and we had a great clinic on “Small Scenery Details” by Rad Jones, I thought that it might be time to devote one of my columns to the A.P. Scenery Certificate. So here goes.

The overall idea is to complete a portion of a model railroad that looks realistic to the viewer and is consistent to the setting. (No Palm trees on the Rocky Mountains.) The size of that “portion” is proportional to the scale in which you model. The following table sets out those sizes.

Scale	Size
O-Scale	60 Sq. Ft.
S-Scale	45 Sq. Ft.
HO-Scale	32 Sq. Ft.
N-Scale	18 Sq. Ft.

Note: The area for other scales is in proportion to HO Scale. Also, the required square footage does not have to be in one contiguous area.

Once complete, your scenery will be evaluated in the categories of Terrain, Structures, Background, Lighting, and Realism/Conformity. Let’s briefly look at each of these categories.

Terrain:

The terrain includes both natural and man-made features. Natural features include such items as dirt, grass, weeds, bushes, trees, rocks, water, hills and depressions, etc. Man-made features are such things as the railroad roadbed, cuts, fills, drainage ditches, embankments, and roads, etc.

Note: Once you have completed your terrain, ask yourself some questions. Does this look realistic? Do the various features blend well together? Does my track ballast look like something the prototype railroads would do? You get the idea – look a bit critically at your own work.

Structures:

Structures will not be evaluated on the basis of the quality of construction, but on prototypical suitability, placement and appearance as scenic elements. (Pardon a pet peeve, but make sure that your structures are nicely ‘planted’ on your layout. No gaps between the structure’s foundation and the terrain.)

So, what is a structure? For the purpose of this Certificate, structures include such items as: bridges, trestles, culverts, buildings (of course), power lines, cranes, derricks, boats, wharfs, loading docks, signs, fences, etc. Railroad specific structures include items like trackwork,

turnout controls, signals, crossing gates, turntables, engine servicing facilities, etc. The list goes on, depending on the setting. (How about a Jill Poke?)

Background:

The treatment of a wall, backdrop, view block or ceiling to realistically depict depth and distance, horizon and sky.

Note: Take particular note on how well you blend your foreground scenery and your background together.

Lighting:

When approaching illumination, you can/should think beyond lighting up a building interior. Think of such things as: locomotives, cabooses, passenger cars, signals, exterior structure lighting, street lights, railroad crossing signals, etc.

Notes: You don't have to include all of these examples, but you should have more than one illuminated structure. If you do illuminate a building interior check for light leaking out at the roof line or corners of the structure.

Realism/Conformity:

When viewing your final scene, it should be believable – a miniature representation of your intended setting in the real world.

Note: A fanciful railroad is acceptable (think Malcolm Furlow). In your write-up, just describe that as your 'intended setting'.



Summary Notes:

1. You can do your scenery work on a friend's layout, a club layout, or on a series of modular segments.
2. If you want me to visit your layout for some feedback on your work prior to the formal evaluation visit, just contact me at:

Monthly Newsletter of the **Clinton River Division** of the North Central Region of the NMRA

bbdeyoung@comcast.net

3. When approaching the paperwork take a minimalist approach. (Think of a descriptive paragraph or two followed by bullet points.) I have some samples that I could provide, or send me an e-mail with a sample of your documentation, and I'll let you know if you are on the right track

Until next month ...

Layout Tours: Layout Tours are now scheduled for May 17th at Steve Weber's and Dave Katona's. See the attached flier for details. Note: construction on 13 Mile Rd. limits access to Dave's house to only West Bound 13 Mile Traffic.

Operating Session Plans – Curt Danielewicz can be contacted if you would like to be included in future Operating Session plans. Curt48044@Gmail.com

- Mike Tranquilla will be hosting an operating session on April 26th. at his home in Livonia. Contact Mike at Michael_Tranquilla@hotmail.com if you wish to participate.

Mike Tranquilla operating session Sat 4-26-25 1pm-5pm

28' x 28' HO around the wall with 5 branch lines
freight, passenger, & holdover yards
8 towns to switch
card order and train order operations
both mixed and solid freight trains
passenger trains
mixture of early & contemporary locos, both steam and diesel
pick the locomotive you want to use
CVP EASYDCC operating system with radio throttles

Location: 16823 Fitzgerald, Livonia, MI 48154, 734-464-3856
Near 6 Mile Rd. & I275

Door monitor at the church: May-Bruce DeYoung; June-Eric Turin

Thanks for volunteering. Please consider volunteering for future months. It only requires a half hour of your time just before the meeting.. For security reasons the church door must remain locked at all times. Thanks for helping out the Division and keeping everyone safe.

Old Business –

- **Reminder that \$10 User fees for 2025 is due.**

New Business

None this month

- **Hints and Tips**
- When using newly purchased electronics, use a meter to check that everything is compatible. A power supply like a “wall wart” can put out a different voltage than the rated amount depending on the current draw, so use a meter to check what the output is.
- The Mentor/Mentee file (give help/receive help) is at https://docs.google.com/spreadsheets/d/1hj4moARyx4iKjpShtSzk8mVanFln9vq0/edit?usp=drive_link&oid=116662642115004050447&rtpof=true&sd=true
- The private Clinton River Division Facebook group is at <https://www.facebook.com/groups/288929175921717/>
- For those on Medicare Part D (Medicare Advantage) ask your insurer if they can give you a “Grouper” discount. This can pay you for your NMRA dues.
- As per a member vote during the March meeting, on-line access will no longer be available via Discord. However, The NMRA Discord portal is still alive. Check it out.
 - A presentation on the steps necessary to complete the onboarding process for NMRA Discord is on our website.
 - For information on how to connect to the NMRA Discord portal go to the Div 8 web page <https://div8.ncrnmra.org/wp-content/uploads/2024/04/Discord-Instructions.pdf>
 - Other Discord instructions are available on the NMRA website under presentations.

Announcements

Please notify Irv Chmielewski (NCRDIV8SECRETARY@gmail.com) if you would like to have an announcement posted in Car House. Provide written details

- See fliers at end of Car House for some future events.

Show and Tell

**OK, Now for something different. It is the Division 8's version of "Where's Waldo".
Following are the Pictures of the Show and Tell Tables. How many of the member
described items can you find?**

John Martin
Building

N Model Works – feed and seed store
Bill Bartlam
Watchman Shanties and a HiLo

3 PRR Watchman Shanties Allegheny Models Kit
HiLo – 3D printed w/Driver

Larry Wolohon
Scenery

O scale Yard office, laser cut – still unfinished
Warren Yohe
Pond and grass Diorama

Diorama demonstrates method for installing tall
grass around a pond. Started with fiber fill, made
thin batched, dipped in diluted glue and applied
fake grass and ground foam.
Ron Kin MMR
Current Project

LIMA-Hamilton transfer unit #5871
Delivered in 1950 to PRR
Paint decals and details added

Ken Scherer
Current Project

Photos
Phil Doolittle
Scenery

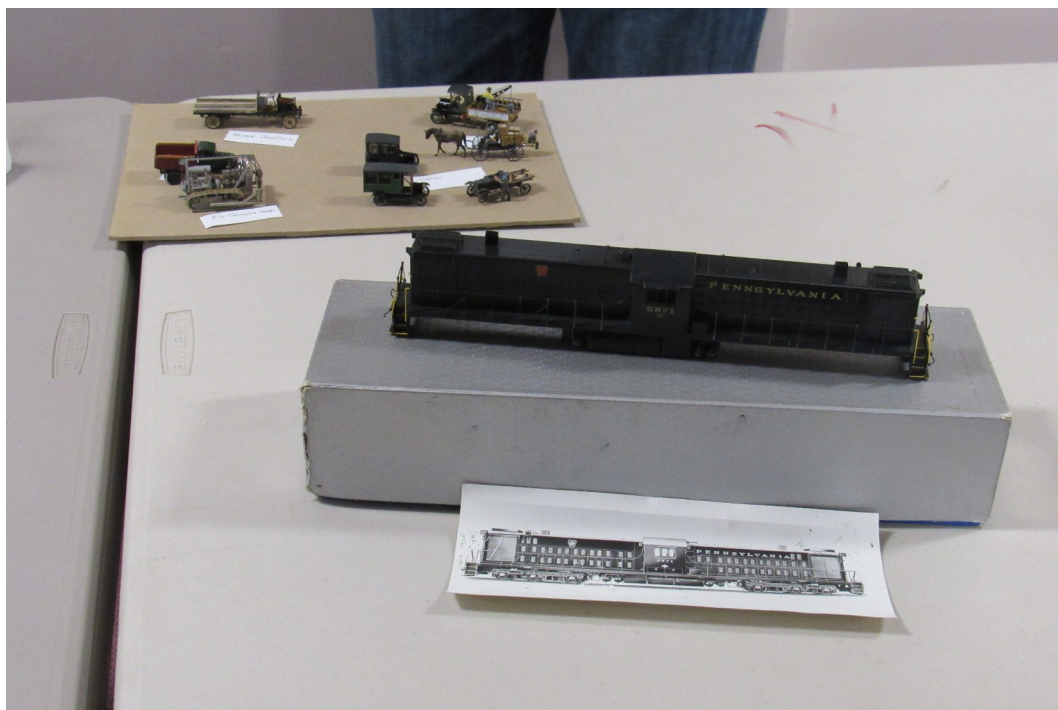
2 Trees made from twisted florists wire, covered
with latex rubber, ground foam and mini-leaves.
Secured with hair spray.
Tim Fisher
Small Laser-cut house

Small houses for a track side neighbor hood.
Bruce DeYoung
Turning dollar store xmas tress into evergreens

Bought a bunch of cheap snow covered xmas trees
and converted them to great evergreens. Removed
the fake snow, reshaped the trees by cutting off
pieces here and there, then applying ground foam.
Bob Stelmach
Ash Pit

A 15' Ash pit made with ½ " wood sides and 2 LED's
installed. Ashes are from steam l0co 1225.

Monthly Newsletter of the Clinton River Division of the North Central Region of the NMRA









SCHEDULES

For more information, contact the organization listed. Event Fliers are attached when available. Check with the venue before the event.

May 15th - Clinton River Division Monthly Meeting Troy Christian Chapel

April 26th Op session at Mike Tranquilla Contact Mike at if you wish to participate
[Michael Tranquilla@hotmail.com](mailto:Michael_Tranquilla@hotmail.com)

May 17th – Div 8 :Layout open houses See flier below

July 14-19 - NMRA National Convention go to NMRA2025.com for registration and other details

Other train shows and train sale events. See fliers below.

Division Meeting

**Live at Troy Christian Chapel and on Discord
Thursday April 17, 7:00 pm**

Clinic

Railroad Signals

Show and tell

Railroad Signals or current projects.

Special Note: If you would like to have pictures of your signals displayed by computer for all to see, send the pictures to Curt
Curt48044@Gmail.com

**Join us after the meeting for snacks and conversation at Leo's Coney Island,
Walton & Livernois**

Train Shows and Other Events

Saturday, April 26 – Muskegon Railroad Historical Society.

Model Railroad and Hobby Expo.

Cardinal Elementary

2310 Marquette Ave.

Muskegon

Sunday, May 19 – 433 Annual Model Train Show 11:00-3:00

Durand Middle School

9550 Lansing Rd.

Durand

Saturday, May 31 – Grand Rapids Model Railroad Historical Society

Open House

4040 Leland Ave. NW

Comstock Park, mi 11:00-4:00

Clinton River Division Layout Open House

**SATURDAY, MAY 17, 2025
12:00-4:00 PM**

**Steve Weber, 31159 East Rutland St., Beverly Hills, MI
(parking is available on both sides of the street)**



Steve's AK & ICN RR is a free-lanced 18' x 22' layout set in the 1950s in Midwest Michigan. It features the town of Charlotte, and contains a farm scene, a sawmill, and an interchange yard. Scenery is 80% complete. Motive power consists of steam (C&O and B&O), RS2s, PA2s, and NW2s. Easy DCC is the operating system.

**Dave Katona, 3215 Woodland Ave., Royal Oak, MI
(Woodland Ave. is accessed from 13 Mile Rd. which may have some construction)**



Dave's layout represents the Detroit & Mackinac Railway ca. 1968. The first phase of what will be an around the basement layout consists of about 50 ft. of mainline from Bay City to Oscoda, featuring the gypsum operation at Alabaster, the shops at Tawas City, and air force fuel unloading at Oscoda. Most buildings are mock-ups, but scenery work is progressing.

