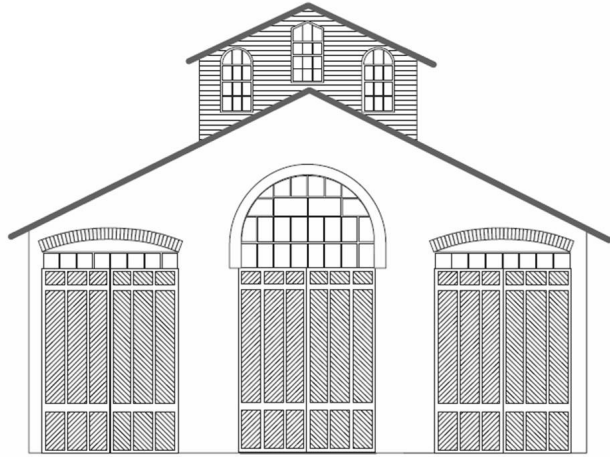


# CAR HOUSE



**May 16, 2024**

Div. 8 Website: <https://www.div8.NcrNMRA.org>

Website:  
[http://  
www.nmra.org/](http://www.nmra.org/)



### **Call to Order**

Meeting called to Order at 7:00

### **Recognition of visitors and MMRs**

MMRs present Ron King, Larry Wolohon, Greg Rich, Bruce DeYoung

### **Presidents Page**

Steam, steam and more steam! I'm pretty sure at least one of our Division 8 meeting attendees is happy (not mentioning any names J.) I'll start off with a reminder that we're going to pick a date for our trip to Metamora to visit Bill Hayes live steam Michigan Central railroad. Take a look at your calendar and come prepared with the dates that you can make it. It'll be a great time and will be at least partially funded by the NMRA retention budget. ***See dates under old business.*** In addition, Dave Katona will be giving a clinic on the Chessie Steam Experience in Detroit in 1977/78. This will be a great clinic with a show and tell featuring your favorite locomotive. I'll finish with my monthly link to something that I hope you all find interesting. This month's link takes you to the Steam Railroading Institute's page where you can sign up to be notified of all the upcoming excursions, including the 1225. It's been a while since the 1225 polished the summertime rails and it's a great way to spend a day. Sign up for the notifications and you'll be among the first to be able to reserve a seat.

<https://michigansteamtrain.charityproud.org/WebForm/Index/1599?formCode=b014beee-06e6-4306-995f-be9f8f082b26>

Hope to see you at the meeting!

Mark

## **Clinic for April**

### Freight Car History and Scheduling

Rich Mahaney

Before starting the clinic, Rick gave an update on the upcoming National Convention in Long Beach, Ca. The National Train show has been canceled due to the cost of the convention center. Some of the vendors will be moved to the convention hotel meeting rooms.

The clinic started with a presentation about the differences in freight cars through the years. Starting with all wood cars, moving on to wood cars but on steel frames then on to the current all steel box cars and the use of more specialized cars such as automotive car carriers.

Then the clinic went into the various different inbound and outbound loads that can take place at a manufacturing location. Inbound loads will include materials used in the manufacturing process that may come from different suppliers from different industries. Outbound loads will of course include the final product, but may also include secondary products and waste materials.

## **BUSINESS MEETING ITEMS**

**All Members** – Please check your NMRA membership cards and renew today. Insurance regulations require meeting participants be NMRA members {after three meetings}. Please stay current. You can renew at **NMRA.org**. There are so many benefits of membership, including discounts at major online retailers, information available on the website. Membership with digital delivery of the NMRA magazine is \$68 per year, \$92 with US mail delivery of the NMRA magazine.

**April Car House** approved.

**May Treasurer's report Dan Shilt:** \$3,904.23 on hand. (unchanged) Approved. **Also, please check if your Division 8 Meeting support user fee has been paid. The fee is \$10 per year payable in January for 2024. 18 Div 8 members that paid our user fee in 2023 have not paid in 2024.**

**Layout Tour Plans:** A flier for our July 27<sup>th</sup> layout tours is attached.

**AP Awards** – None this month.

**Operating Session Plans – Curt Danielewicz can be contacted if you would like to be included in future Operating Session plans.**

**Door monitor** at the church; John Jackson volunteered for June and Bob Scherer for July. Thanks for volunteering.

Please consider volunteering for future months. It only requires a half hour of your time. For security reasons the church door must remain locked at all times. Thanks for helping out the Division and keeping everyone safe.

**Old Business**

- A couple of our members have volunteered to work on the Model train layout at the Veterans Administration Hospital in Detroit.
- Interest in a Retention Event was discussed. The most interest was shown to be going to the live steam 7 ½ gauge at Bill Hayes' Michigan Central in Metamora. A date will be picked at the June meeting. Bill has sent a schedule of upcoming sessions. The schedule is below. Please be ready to discuss dates at the June meeting.

2024 MCRR Meet Dates

**Please be ready to discuss dates at the June meeting.**

- The following are the meet dates at the Michigan Central Railroad of Bill & Gisela Hays 810-797-4961.
- June 20 to 23 Thu – Sun: WORK/RUN OPEN MEET
- July 18 to 21 Thu – Sun: SUMMER RUN OPEN MEET  
South Oakland HO club visit
- Aug 29 to Sept 2 Thu – Mon: FALL CARD ORDER

**New Business**

- Volunteers for the registration desk for the 2025 National convention can contact Doug Tagsold. Contact information has been added to our National Convention Regional Contacts page

### **Hints and Tips**

- The Mentor/Mentee file (give help/receive help) is at [https://drive.google.com/file/d/195MkOSzCIIO4pfcGtM4LcnI-sIExBw2\\_/view?usp=sharing](https://drive.google.com/file/d/195MkOSzCIIO4pfcGtM4LcnI-sIExBw2_/view?usp=sharing)
- The private Clinton River Division Facebook group is at <https://www.facebook.com/groups/288929175921717/>
- For those on Medicare Part D (Medicare Advantage) ask your insurer if they give you a “Grouper” discount. This can pay you for your NMRA dues.
- A presentation on the steps necessary to complete the onboarding process for NMRA Discord is on our website <https://div8.ncrnmra.org/wp-content/uploads/2024/04/Discord-Instructions.pdf>
- Other Discord instructions are available on the NMRA website under presentations.

## Announcements

***Please notify Irv Chmielewski ([NCRDIV8SECRETARY@gmail.com](mailto:NCRDIV8SECRETARY@gmail.com)) if you would like to have an announcement posted in Car House. Provide written details***

- **The 2025 NMRA National Convention will be held in Novi, the second week in July!** More information is coming, but get your layouts in shape for open houses, prepare possible clinics and be ready to volunteer! Clinics for the 2025 Convention are being coordinated by Andy Keeney.
  - The planning committee is committed to focus the convention on giving value to attendees and the NMRA as a whole.
  - Clinics will focus on new content. There is enough time for all of us to develop a new clinic on a topic that will be of interest. Any clinic presentation could be first presented at our meeting so that it can be revised and polished for the National convention
  - Clinic/Layout and other Coordinators are included in Carhouse so please reach out if interested.
  - Division 8 Volunteer Coordinator is Mark Mincek.
- The North Central Region convention is happening in Northville, Oct 10-12. A flier is attached.
- Jim Prowse is tearing down his O scale layout prior to moving. Contact him at [jprowse@flash.net](mailto:jprowse@flash.net) for further information.
- Gail Braman is distributing for free parts (including trees, rail cars, buildings) of a dismantled HO layout. Contact Gail at [1769gailbraman@gmail.com](mailto:1769gailbraman@gmail.com) if interested.
- Kent Aughe is helping distribute a disappearing layout. Contact Kent at [chappe81@wowway.com](mailto:chappe81@wowway.com).

**National Convention 2025 Regional Contacts**

**A lot of work needs to be completed before the Nation Convention. The region has established a number of work groups that can use additional volunteers.**

**The following are the persons that you can contact to assist with the convention.**

**Chairman- Scott Kremer**

**Co-Chair and Hotel Coordinator – to be filled (Note the primary hotel responsibility is through the NMRA Meeting and Trade Show personnel)**

<b>Treasurer - Steve Harsh</b>	<b>Webmaster - Marshall Stull</b>
<b>Non-Rail - Kitty Kremer</b>	<b>LDSIG - Ron Burkhardt</b>
<b>OPSIG - Eric Smith</b>	<b>RPM Conference - Mike Skibbe</b>
<b>PR/Marketing - Jim Zinser, Barry Hensel</b>	<b>Layout Visit - Brook and Jay Qualmann</b>
<b>Op Sessions - Ken Chick</b>	<b>Prototype Tours - Bruce Wolfe</b>
<b>Clinics - Andy Keeney</b>	<b>Volunteers - Div 6 - Bill McMillan</b>
<b>Yard Sale - Greg Rich</b>	<b>IT coordinator - Jeff Higgins</b>
<b>Registration Desk - Doug Tagsold</b> dtagsoldyahoo.com	

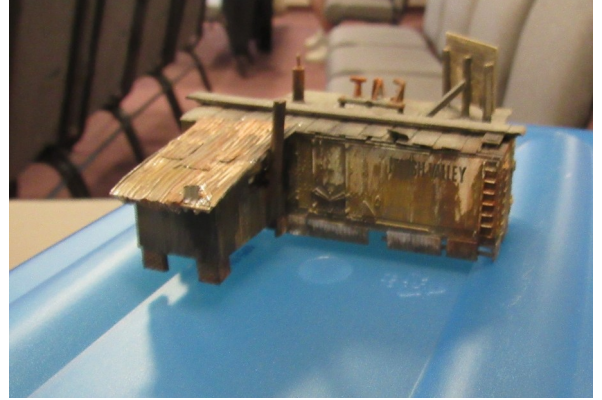
**Positions still needing to be filled.**

<b>Bus Coordinator</b>	<b>Contest Coordinator</b>
<b>Volunteers - Div 8</b>	<b>Merchandise - basically shirts</b>

## Show and Tell

Gail Braman  
N-scale Building

Used a freight car as the main part of the building  
Built about 25 years ago



Ron King MMR  
Box Car

Western Pacific box car # 20805  
Model by Varney new roof walk and details. A model of  
a 1950's box car.





Saul Kalbfeld  
4 Old rebuilt cars

- AHM covered hoppers
- Miller reefer car
- 60" Hi-cube W/C box



Fred Cosgrove  
Freight Cars

O Scale Traction Freight cars were usually longer because of the smaller width (8'6" versus 10'). Also had radial couplers and rounded ends to take the sharp radius on the city streets.



Rad Jones  
Soviet Union Box Car

Stalin and Khrushchev era produced in Soviet Union 1950-1960. All metal car, door moves and hatch.



Bill Bartlam  
Box Car

Rock Island Car with grain load marked for C&SR  
(Colorado and Silver River) an S Gauge RR located in  
Dallas.



Larry Wolohon MMR  
Freight Cars

“O” scale Gibraltar RR Box Car autographed by  
Milt Moore, “Thumbs”.



Warren Yohe  
Current Project – Masonite track cleaning car

Masonite track cleaning car with open box design. A  
40 ft. gondola was modified with an iopen box to hold  
a free floating Masonite boards. Based on an article in  
April 2023 NMRA magazine.



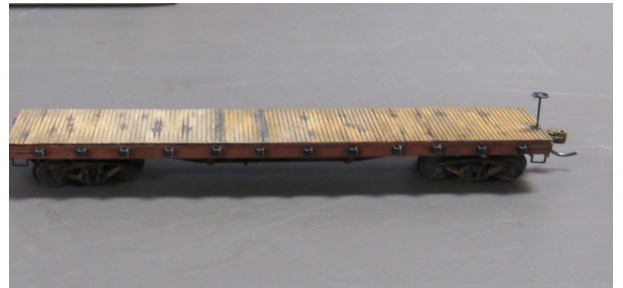
David Katona  
D&M wood box car

Built from a Labelle wood kit bought in the late 1970's.  
Started building it then. Finally finished it during the pandemic.



Steve Weber  
2 Freight cars

Titchy flat car and a Pacific Fruit Express refer.



Monthly Newsletter of the **Clinton River Division** of the North Central Region of the NMRA

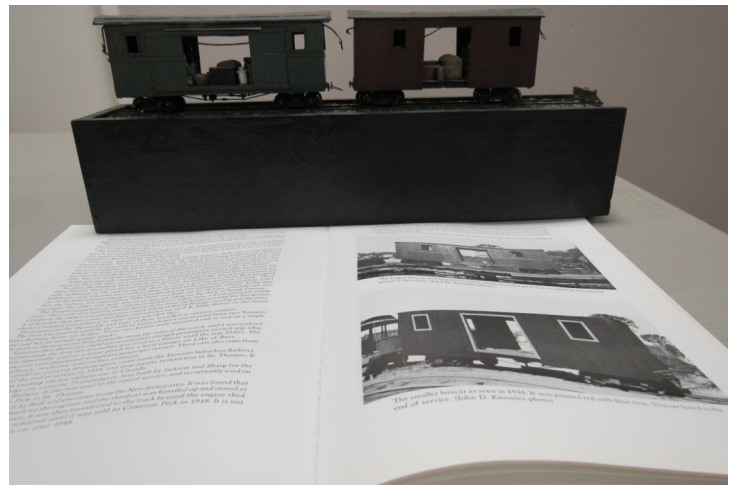
Bruce DeYoung  
ADC Roundhouse gondola

An old Roundhouse gondola made into a MOW car.



Dan Shilt  
H&L of B RR Box cars

Scratch built ON30 Large and small box cars.



## **SCHEDULES**

For more information, contact the organization listed. We do not have further details. Obviously, schedules are subject to change. Check with the venue before the event.

**June 20<sup>th</sup> - Clinton River Division Monthly Meeting Troy Christian Chapel**

**July 27<sup>h</sup> – Div 8 Layout tours See attached flier for more information**

**August 4-11 – Surfliner 2024 NMRA National Convention** See NMRA website under Conventions for a link to more information

**September 11-14<sup>th</sup> -National Narrow Gauge Convention** <https://www.44nngc.com/>

### **Division Meeting**

**Live at Troy Christian Chapel and on Zoom**

**Thursday, June 20, 7:00 pm**

**Clinic**

**The Chessie Steam Experience in Detroit 1977/78**

**Dave Katona**

**Show and Tell**

**Locomotives**

**Join us after the meeting for snacks and conversation at Leo's Coney Island,  
Walton & Livernois**

*We will send you notice of the meeting and the Discord connection a few days before the meeting. Please look in your spam folder if you do not receive it timely.*

*Don't ask, I have no idea why some providers think we are spam.*

Division Six of the  
NCR- North Central Region of the  
NMRA- National Model Railroad Association presents-



## **NORTH CENTRAL EXPRESS 2024**

**A MODEL RAILROAD WEEKEND CONVENTION!**



**THURSDAY - FRIDAY - SATURDAY - SUNDAY  
OCTOBER 10-11-12-13, 2024  
NORTHVILLE, MICHIGAN, USA**

WELCOME to the NCR Model Railroad Convention, **NORTH CENTRAL EXPRESS 2024!** The convention is being hosted by DIVISION SIX, located in Wayne and Washtenaw counties. We are planning a great weekend of model and prototype railroading, just for YOU! Please access our website for all of the important information you need to help you to decide to attend this event. As you'll soon read, we're concentrating on having fun and learning all about model railroading! All you need to do is fill out the registration page, send it in with your registration fees and you'll be part of one of the greatest model railroad events in Michigan! Visit us online and register there using your credit card and PayPal security services! Come and join us for the MAXIMUM model railroad **FUN**, all in one weekend!

**Open to ALL model railroaders! You DO NOT have to be an NMRA member to attend!**

### **EVENT HIGHLIGHTS INCLUDE-**

- \* Event site – Ward Church, Northville, MI
- \* Event shirts available pre-order only
- \* Special DAY PASS entry available!
- \* Online Registration available on website!
- \* Banquet Dinner on Saturday evening
- \* Clinics on Friday and Saturday
- \* Operation sessions available Thursday, Friday, Saturday
- \* NO model contest – MODEL SHOWCASE – show off your work!!
- \* Get a discount for participating in the Model Showcase!!
- \* Model layouts to visit on Friday and Saturday
- \* Prototype tours on Friday (if available)
- \* Yard Sale of new/used model railroad equipment
- \* Ask the Experts (MMR's) table
- \* EVERYONE welcome to attend!



For more information or questions answered, contact -  
Norm Logan, Chairman -  
248-444-3491 [nlogan114@wowway.com](mailto:nlogan114@wowway.com)  
Paul Lichau, Div 6 Superintendent -  
734-878-5390 [plichau@yahoo.com](mailto:plichau@yahoo.com)  
Mark Ellis, Asst. Chairman -  
734-536-5470 [emark@sbcglobal.net](mailto:emark@sbcglobal.net)  
visit our web pages at- [ncx24.ncmmra.org](http://ncx24.ncmmra.org)

## NCX - NORTH CENTRAL EXPRESS 2024 REGISTRATION FORM & INFORMATION

Name	Spouse
Address	
City	State
Phone	Zip
email	
NMRA No.	Region Div MMR

### REGISTRATION FEES

	how many
on or before September 25, 2024 - NMRA member	\$65
on or before September 25, 2024 - NON NMRA member	\$75
after September 25, 2024 - NMRA member	\$75
after September 25, 2024 - NON NMRA member	\$85
on or before October 13, 2024	One Day Pass = \$40

**REGISTRATION** - is per person for anyone over 18 years old that will be participating in the convention activities. Spouse is free if ONLY attending layout tours and/or dinner. Children under 18 years old are free for the weekend and welcome to attend convention activities with a paid adult.

**Dinner** - SPAGHETTI DINNER! Everyone (including children under 18) must pay for dinner if you are attending. This also includes our Keynote Speaker and Awards presentation. **NOTE- cut-off date for dinner is October 1, 2024.**

**Event Sweat shirts** are cotton/poly blend, green in color with the NCX logo embroidered in color on the left side

**Event polo shirts** are 35-65% cotton-poly no pocket shirts, green in color with the NCX logo embroidered in color on the left side **NOTE- cut-off date for ordering shirts is September 10, 2024. There will be NO shirts available at the convention!**

**Model Showcase Discount!**

If you bring a model to display in the Showcase room, we will give you a \$5 discount on your entry to NCX-24! **NOTE - you do NOT get \$5 per model!! Only ONE discount per person no matter how many models you bring. Discount to be given at Registration!**

**ONE DAY PASS** - is for Saturday only and includes all the clinics that day and 5 layout tours.

### EXTRA BOARD

		how many	
Dinner per person	\$25		
sweat shirt	small	\$34	
	medium	\$34	
	large	\$34	
	X-large	\$34	
	2X-large	\$34	
3X-large	\$34		
	4X-large	\$34	
	polo shirt	small	\$32
		medium	\$32
large		\$32	
X-large		\$32	
2X-large		\$32	
3X-large	\$32		
4X-large	\$32		

**TOTAL**

Payment to be check or money order made out to- **NMRA DIVISION 6**

Send registration form with payment by October 1, 2024 to:  
**NCX Registrar 35684 Camden Ct Farmington Hills, MI 48335**  
 ON-LINE registration available until October 7, 2024 at [ncx24.ncmmra.org](http://ncx24.ncmmra.org)

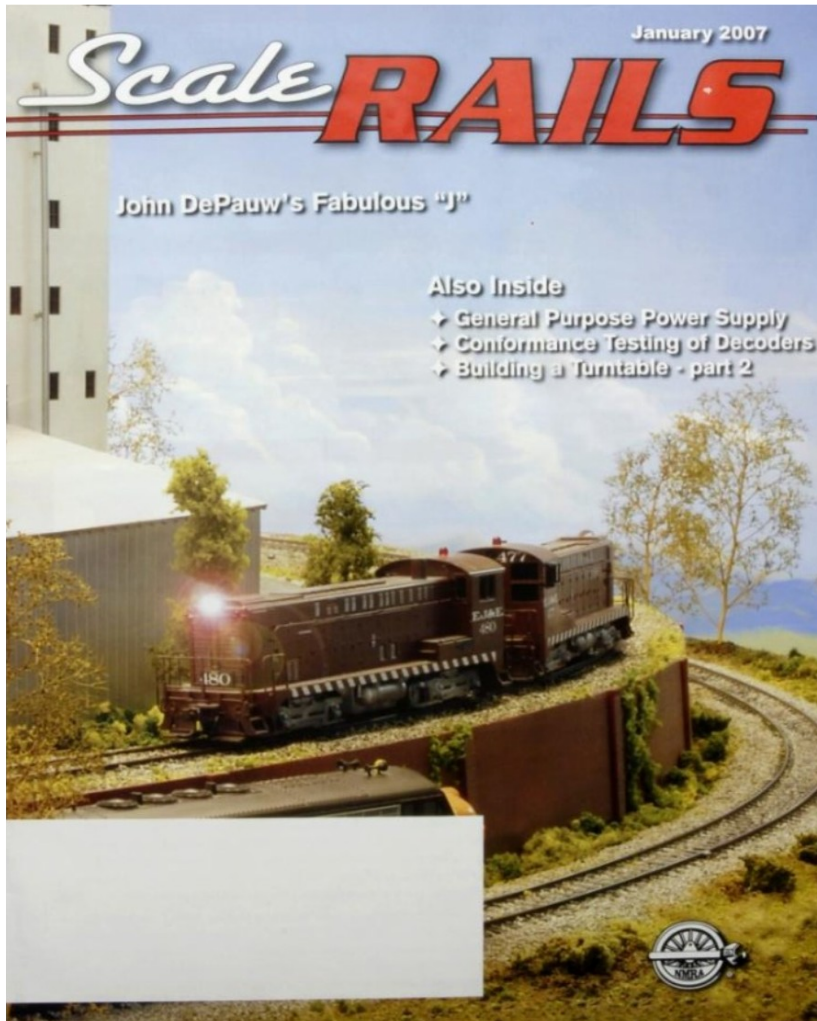


# Clinton River Division Layout Open House

Saturday, July 27, 2024  
1-4 PM

**John Depauw** [1303 Ridgeview Circle, Lake Orion, MI 48362](#)

Based on the EJ&E in Chicago in 1973, John's layout depicts the belt railway that linked most of the railroads coming into the Chicago area, including the B&O, Indiana Harbor Belt, Chicago South Shore, N&W, GM&O, NC&P, BN, and others. The layout is large (multi-deck 2000 sq. ft.), and it was constructed with operation in view. John operates regularly, and his sessions have space for 15-20 operators. The layout features coal-hauling, the steel industry, and a large number of subsidiary industries. Most important, his layout features interchanges with the many railroads in the Chicago area.





**John Siekirk** 9415 Thornhill Drive, Clarkston MI 48348

This free-lanced HO scale layout, the Superior & Seattle RR, depicts the northwest during the steam era. You may have seen John's photography work without realizing it, since he does a lot of the photography for George Sellios' famous Franklin & Manchester layout in the Boston area. John has built virtually all of Sellios' Fine Scale Miniature structures for his layout. He also produces the monthly S&S Railroad Gazette, an online publication featuring both his own work, cameos of George Sellios' railroad, and guest authors.

