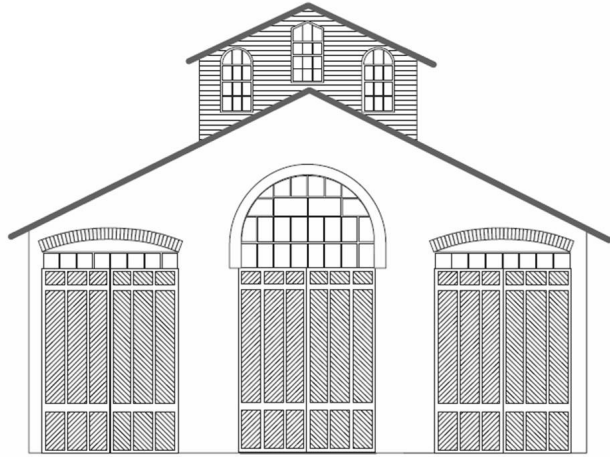


CAR HOUSE



January 18, 2024

Div. 8 Website: <https://www.div8.NcrNMRA.org>

Website:
[http://
www.nmra.org/](http://www.nmra.org/)



Call to Order

Meeting called to Order at 7:02

Recognition of visitors and MMRs

MMRs present Jim Zinser, Ron King, Larry Wolohon, Bruce DeYoung.

Presidents Page

The first part of my Carhouse message is a little more business oriented. We are starting a new election cycle at the regional level and Rich Mahaney is looking for three additional volunteers that would work on the North Central Region election committee. If you are interested, please let me know and I can get you in contact with Rich. Elections are an important part of maintaining the NMRA, so I highly encourage anybody who is interested to volunteer. As a bonus, you'll also get credit toward your AP certificate for volunteering.

On a non-business note, and in keeping with the clinic theme of turnout construction and track, I'm including a link to the "Ten Commandments" for designing a rail yard. The rail yard is the heart of any rail system and a well-designed yard will add to the realism and the operations potential of your own layout. Below is the link.

https://www.ncmrc.org/how_tos/Model_RR_Yard_Design.pdf

Enjoy!
Mark

Clinic for December

Clinic on Fast Tracks by Mark insert a comment and detail link to our web site.

Taking Fast Tracks to the Next Level By Mark Mincek

Mark presented a slide show of some of the tips, tricks, and hints he has come up with while working with Fast Track turnout templates. A

copy of the slides have been posted under our division web site
www.NCRNMRA.ORG/presentations .

BUSINESS MEETING ITEMS

All Members – Please check your NMRA membership cards and renew today. Insurance regulations require meeting participants be NMRA members {after three meetings}. Please stay current. You can renew at **NMRA.org**. There are so many benefits of membership, including discounts at major online retailers, information available on the website. Membership with digital delivery of the NMRA magazine is \$68 per year, \$92 with US mail delivery of the NMRA magazine.

Also, please check if your Division 8 Meeting support user fee has been paid. The fee is \$10 per year payable in January for 2024.

December Car House approved.

January Treasurer's report Dan Shilt: \$3,8350.23 on hand. Approved.

Layout Tour Plans are being finalized for two layouts in March. Date and times TBA.

AP Awards – Larry Wolohon, MMR has received a certificate for 50 YEARS a member of the NMRA.

Operating Session Plans – Curt Danielewicz can be contacted if you would like to be included in future Operating Session plans.

Door monitor at the church; Steve Weber has volunteered for February, John Martin has volunteered for March. Thanks for volunteering.

Please consider volunteering for future months. For security reasons, the church door must remain locked at all times. Thanks for helping out the Division and keeping everyone safe.

Old Business

- Work is almost complete on the information for accessing NMRA DISCORD.

New Business

- Passing of Bill Neale.

Announcements

Please notify Irv Chmielewski (NCRDIV8SECRETARY@gmail.com) if you would like to have an announcement posted in Car House. Provide written details

- **The 2025 NMRA National Convention will be held in Novi, second week in August!** More information is coming, but get your layouts in shape for open houses, prepare possible clinics and be ready to volunteer! Clinics for the 2025 Convention are being coordinated by Andy Keeney.
 - The planning committee is committed to focus the convention on giving value to attendees and the NMRA as a whole.
 - Clinics will focus on new content. There is enough time for all of us to develop a new clinic on a topic that will be of interest. Any clinic presentation could be first presented at our meeting so that it can be revised and polished for the National convention
 - Clinic/Layout and other Coordinators are included in Carhouse so please reach out if interested.
 - Division 8 Volunteer Coordinator is Mark Mincek.
 - The Detroit Model Railroad Club has scheduled open house events through the holidays and into the winter. Go to WWW.DMRRC.Org for dates and time.
- The Royal Oak Historical Society is planning an exhibit (probably April 2024) about railroading in Royal Oak. They have historical information and photos. They desire to display models (in secure cases). If you would consider loaning models (any scale) of locomotives (particularly steam), rolling stock and passenger cars, or models of structures, please contact Kent Aughe at chappie81@wowway.com for further information or to make arrangements. Thanks.
- Jim Prowse is tearing down his O scale layout prior to moving. Contact him at jprose@flash.net for further information.

- Jim Dennis of the Stoney Creek Model RR Club will be hosting an open house on Feb. 3rd. 1 to 3 PM, 1143 Bembridge Ave., Rochester Hills, MI. Jim suffered a stroke and may be tearing down his layout so it is an opportunity to see it perhaps for the last time.

National Convention 2025 Regional Contacts

A lot of work needs to be completed before the Nation Convention. The region has established a number of work groups that can use additional volunteers.

The following are the persons that you can contact to assist with the convention.

Chairman- Scott Kremer

Co-Chair and Hotel Coordinator – to be filled (Note the primary hotel responsibility is through the NMRA Meeting and Trade Show personnel)

Treasurer - Steve Harsh	Webmaster - Marshall Stull
Non-Rail - Kitty Kremer	LDSIG - Ron Burkhardt
OPSIG - Eric Smith	RPM Conference - Mike Skibbe
PR/Marketing - Jim Zinser, Barry Hensel	Layout Visit - Brook and Jay Qualmann
Op Sessions - Ken Chick	Prototype Tours - Bruce Wolfe
Clinics - Andy Keeney	Volunteers - Div 6 - Bill McMillan
Yard Sale - Greg Rich	IT coordinator - Jeff Higgins

Positions still neededing to be filled.

Bus Coordinator	Contest Coordinator
Volunteers - Div 8	Merchandise - basically shirts

Hints and Tips

None this month

Far in ad Monthly Newsletter of the **Clinton River Division** of the North Central Region of the NMRA

The Mentor/Mentee file (give help/receive help) is at

<https://drive.google.com/file/d/195MkOSzClIO4pfcGtM4LcnI-sIExBw2/view?usp=sharing>

The private **Clinton River Division Facebook group** is at

<https://www.facebook.com/groups/288929175921717/>

Show and Tell

Members brought in Holiday Gifts they received or current Projects

Warren Yowe
Video Microscope for track
Inspection

Video Microscope to inspect track
for surface scratches and cleanliness
and micro-arcing damage



Greg Rich
Boxcar with a sag

Scratch built truss rod boxcar with a
sagging midsection



Far in ad Monthly Newsletter of the **Clinton River Division** of the North Central Region of the NMRA

Ron King, MMR
Restaurant

White Tower restaurant of the 1950's
Model by Magnuson Models
Paint and super detailed



John Jackson
Christmas Gifts

NMRA Logo shirt and hat
Walters 2024-2025 Catalog
Model Playground set/lights/Santa
Claus Display



Scott Swinger
(1st time at Div 8 Meeting)
RR Coffee Mug

Bought by my wife as a stocking
stuffer



Jim Zinser
Hallmark Train Christmas Tree
Ornaments

Pennsy K4 steam Loco and tender
Pennsy caboose



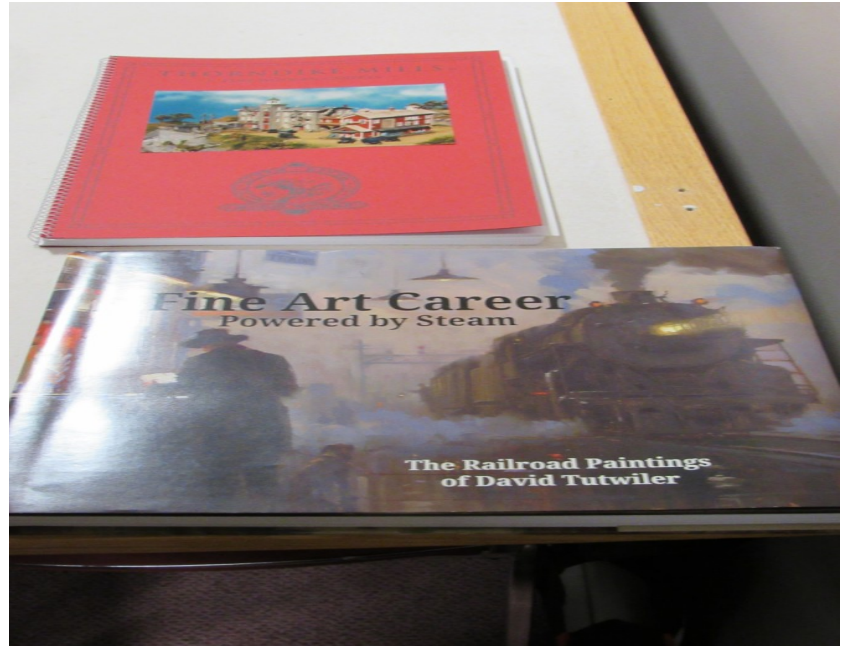
Curt Danielewicz
Atlas U30C Detroit Edison

Latest run with “proper” weathered
blu/white paint scheme.



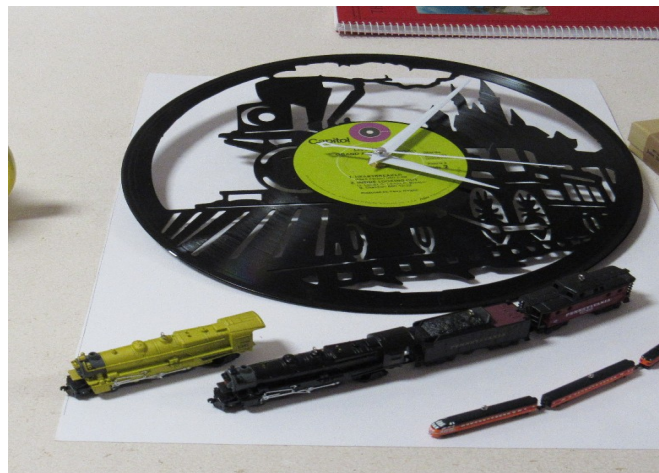
Phil Doolittle
Christmas presents

1. South River Model works – Thorndyke Mills
2. Book – A fine Art Career Powered by Steam – by David Tutwiler



Ken Scherer
Christmas Gifts

- Clock (made from old vinyl record)
Hallmark ornament



Far in ad Monthly Newsletter of the **Clinton River Division** of the North Central Region of the NMRA

Steve Weber
Christmas gift

Scale Train 70 ton gondola
Milwaukee Racine & Troy two bay hopper
Model Railroad handbook
2024 model railroads, commodities by
freight cart



Bruce DeYoung, MMR
Christmas gifts

Wife bought me a PICO 65 ton center cab
in HO
My sons gave me the FSM “Old Time”
Sawmill and a Bar Mills “Jerry’s Small
Engine Repair”



Larry Wolohon
Christmas Presents

Larry Express – Pottery steamer printed
by my daughter



Irvin Chmielewski
Christmas Gift

From my Wife Dremal Workstation –
Holds a Dermal tool so it can be used as
a drill press or at other angles for
polishing or similar tasks.
Not pictured, a collection of Mini-print
animals including seagulls, Moose, and
Bear.



Dave Thornton (online)
Christmas Present

Hallmark Ornament
(See pictures from Ken Scherer and Jim Zinser)

Tony Britsky
Brass French Steam engine

Swiss manufacturer Lemaco's HO Brass
French 241 P Steam Engine



SCHEDULES

For more information, contact the organization listed. We do not have further details. Obviously, schedules are subject to change. Check with the venue before the event.

February 15th - Clinton River Division Monthly Meeting Troy Christian Chapel

March 23, 2024 North Central Region Spring Modelers Meet.

Also See -Train Show Fliers Below.

Division Meeting

Live at Troy Christian Chapel and on Zoom

Thursday, February 15, 7:00 pm

Clinic

Movable and Temporary Scenery

By Irv Chmielewski

Show and Tell

Scenery related or Current Projects

**Join us after the meeting for snacks and conversation at Leo's Coney Island,
Walton & Livernois**

We will send you notice of the meeting and the ZOOM code a few days before the meeting. Please look in your spam folder if you do not receive it timely. Don't ask, I have no idea why some providers think we are spam.



North Central Region Spring Modelers Meet

Hosted by the Black Swamp Division (Div 1) of the North Central Region (NCR), NMRA



March 23, 2024 – Sylvania OH

Sylvania Community Services Center, 7140 W Sylvania Ave, Sylvania, OH 43560

Learn New Skills, Share Your Models, Share Techniques, Visit Layouts



This is a modelers' event!
Lunch options will be available on-site!



This event is open to ALL MODELERS - NMRA Membership is not required

SCHEDULED ACTIVITIES

Model Showroom – Bring your models (finished or in-progress) of locomotives, rolling stock, structures, dioramas, or scenery. All are welcome! The showroom is about sharing the hobby in all its many forms.

Modeling Clinics – learn new skills with clinics on a mixture of subjects presented by modelers, historians, and industry experts.

Layouts and Displays - Small and modular displays will be available within the main venue.

Layout Tours - Layout tours of local layouts will be available during the afternoon.

Admission is \$20 at the door

All event activities (minus lunch) are included in one low price!

Advance registration is encouraged on the website at smm.ncrnmra.org

This is NOT a swap meet!

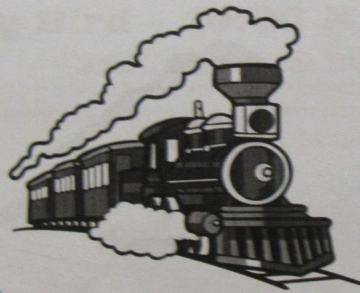


Visit our website for more information
smm.ncrnmra.org



**TAYLOR TOWN TRAIN
SHOW AND SALE
MARCH 16 2024
10AM – 4PM**

22525 ECORSE RD. TAYLOR MI. 48180



KIDS FREE

FOOD ON SITE

FOR VENDOR INFO CALL MIKE: 3139555523

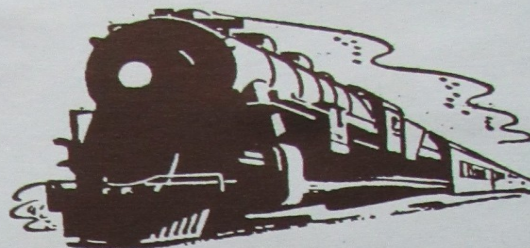
\$25 FIRST OR ONLY TABLE \$20 EACH

ADDITIONAL TABLE

TAYLOR TOWN TRAIN SHOW 3139555523



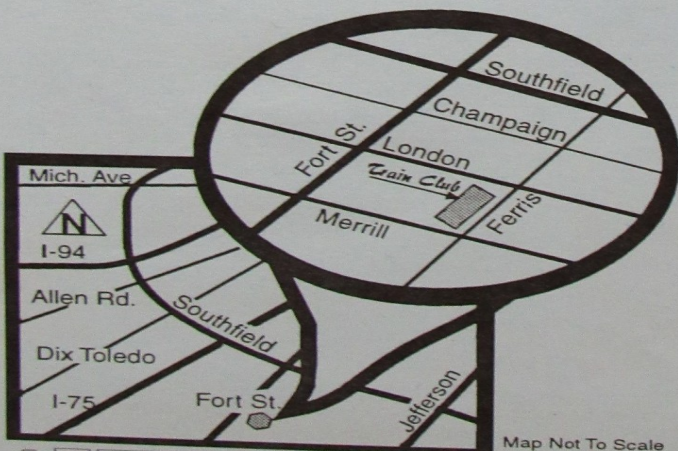
LINCOLN PARK TRAIN CLUB'S TRAIN SHOW (Buy & Swap)



Saturday, March 30th, 2024 11 a.m. - 3 p.m.

Admission \$5.00
Early Bird - 10:00 A.M. - \$10.00

J.F.K. Memorial Building
3240 Ferris (behind church)
at the corners of Ferris and London Streets, east of Fort Street
Lincoln Park, Michigan



Map Not To Scale

CONTACT

- Bob Adler - 734-675-5712
10 a.m. - 10 p.m.
- Darrell Hicks - 734-624-1462
6 p.m. - 10 p.m.
- John Waske - 734-676-8645
12 p.m. - 6 p.m.

TABLES

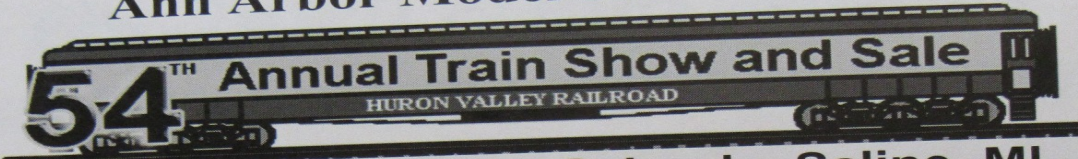
\$20.00 before March 1, 2024
\$25.00 at the door (if available)

SET UP

8:00 a.m.
Hall Must be Vacated by
4 p.m.



Ann Arbor Model Railroad Club



Held at Saline Middle School – Saline, MI


2 Day Show
February 17th & 18th, 2024

Saturday 10am – 4pm
Sunday 10am – 3pm
Admission \$7.00
Scouts in uniform admitted free
Children under 10 free with paid adult
Free shuttle bus service provided to all school parking lots.


Attractions

- 300+ Tables
- Operating Layouts
- Clinics by AAMRC members.
- Free Raffle – Vendor Bucks which can be used towards purchases from any dealer
- Dealers from around the country
- Food Service
- Kids Zone


How to Get There:



Saline Middle School
7190 N. Maple Rd.
Saline MI 48176



← google map QR code



From US-23

- Exit 34, US-12 – Michigan Ave
- West on US-12 5½ miles to Maple Rd.
- North on Maple ½ mile to the old Saline Middle School on the West side of Maple

From I-94

- Exit 175, Ann Arbor – Saline Rd.
- South on Ann Arbor – Saline 1 mile to Maple Rd.
- South on Maple 4 miles to the old Saline Middle School on the West side of Maple

For information on exhibiting or attending see our website at www.hvrrhs.org,
Call or Fax (734) 426-0829 anytime or (734) 426-5100 Wednesday evenings
or email us at a2modelrailroad@gmail.com

Chi-Town Union Station and West Oakland Railroad Museum

Open Dates 2023-24 Season
November 11, 12, 24, 25, 26
December 9, 10, 23, 24, 28, 29, 30
January 13, 14, 27, 28
February 10, 11, 24, 25
March 9, 10, 23, 24
- Hours 11am - 5pm -

World's Largest "O" Scale Model Railroad



8.613.9471
75 Cooley Lake Road
Commerce, MI 48382


Handicap
Accessible

Admission:	Adults	\$8
	Ages 5 - 17 years	\$4
	Kids under 5	FREE (with adult)