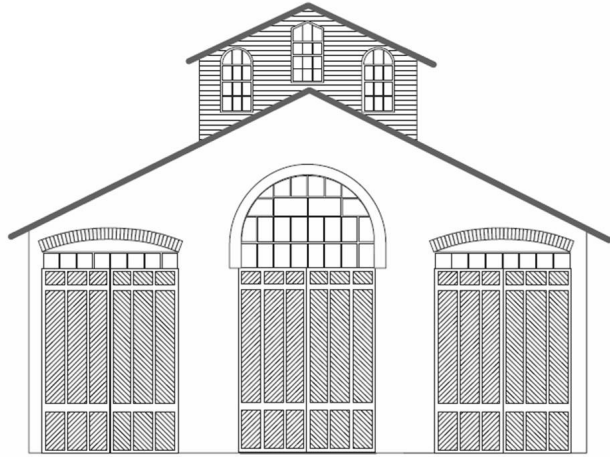


CAR HOUSE



September, 2023

Div. 8 Website: <https://www.div8.NcrNMRA.org>

Website:
[http://
www.nmra.org/](http://www.nmra.org/)



Call to Order

Meeting called to Order at 7:21

Recognition of visitors and MMRs

MMRs present Jim Zinser, Ron King, Dan Lewis, Greg Rich and Larry Wolohon.

Visitors: Bruce Kidder, John Honkala (Both have now joined the Division)

Presidents Page

Dan Lewis gave an excellent clinic at our September meeting on how to take DPM kits to the next level (and beyond). Part of that extra detailing that he described was on signage and the use of advertising on structures.

For those that are focused on a particular time frame or specific year, you'll always want to make sure that the advertising signage that you include as part of your detailing is era appropriate. If you model 1956, you don't want to find out that the sign that you just applied to the side of your latest modeling project was from 1969.

To help you get the proper signage and logos for your specific era, below is a link to a website that will help you with that. The link takes you through the evolution of the "Chevron" gas station logo (something I was checking on recently), but just search for the company you are interested in. You can also print out the logos that you are interested in to make your own signs. The site covers a very long history that should help from the early steam era to modern day.

<https://logos-world.net/chevron-logo/>

Hope you enjoy,
Mark

Clinic

Getting the most out of Design Preservation Models (DPM)

by Dan Lewis

Kits are made in O, HO, and N scales. The presentation showed ideas to improve basic kits. The basic DPM kits come with four walls, window glazing, and instructions. They do not have foundations, details, and other extras.

Dan presented slides of how he modified and added to kits to make them different and unique. Some kits had wall modified by being shortened while another had extra length added to some walls. All kits were painted making the brick work look right. Dan followed a multi step process, first the walls were primed, and then over sprayed, followed by a light sanding.

All buildings have numerous details added, such a blinds in the windows, signage, foundations, roof top clutter, and other features. Many of his signs come from Desperate Enterprises {Desperate.com}. Dan did bring a DPM modified kit for Show and Tell. (see Below)

BUSINESS MEETING ITEMS

All Members – Please check your NMRA membership cards and renew today. Insurance regulations require meeting participants be NMRA members {after three meetings}. Please stay current. You can renew at **NMRA.org**. There are so many benefits of membership, including discounts at major online retailers, information available on the website. Membership with digital delivery of the NMRA magazine is \$68 per year, \$92 with US mail delivery of the NMRA magazine.

Also, please check if your Division 8 Meeting user fee has been paid for 2023. The fee is \$10 per year payable in January.

August Car House approved.

August Treasurer's report Dan Shilt: \$4,2335.25 on hand. No transaction were processed against our account. Approved.

Layout tour Plans – Dan Lewis: The next two Division 8 layout tours are scheduled for Saturday, December 2nd. from 1-4. Details are in the announcements

Operating Session Plans – Curt Danielewicz has set up an operating session for Oct. 7th at the South Oakland County Railroad in Madison Heights.

Door monitor at the church; Dan Sherer has volunteered for November and George VanDuyne for December.

Thanks for volunteering.

Please consider volunteering for future months. For security reasons, the church door must remain locked at all times. Thanks for helping out the Division and keeping everyone safe.

Migration to Discord

The NMRA migration to Discord is still underway, but some people are struggling. Mark will put together a presentation for members to take home and try to make progress.

2025 Convention: No updates. But we should remember:

- The planning committee is committed to focus the convention on giving value to attendees and the NMRA as a whole.
- Clinics will focus on new content. There is enough time for all of us to develop a new clinic on a topic that will be of interest. Any clinic presentation could be first presented at our meeting so that it can be revised and polished for the National convention
- Clinic/Layout and other Coordinators are included in Carhouse so please reach out if interested.
- Division 8 Volunteer Coordinator is Mark Mincek.

Revised train Show Plan.

No update.

New Business

- Ft. Wayne Regional Conference- Oct. 19 thru 22. Our Division meeting in October will be canceled since the conference takes place at the same time,
- Interest was judged in visiting Bill Hayes 71/2 gauge in Metamora this fall. The railroad has a 1 ½ mile track.

Announcements

Please notify Irv Chmielewski (NCRDIV8SECRETARY@gmail.com) if you would like to have an announcement posted in Car House. Provide written details

NMRA-North Central Region Convention will be held in Fort Wayne in Oct. 19-22.
If anyone is interested in giving a clinic at the convention, contact Jim Macino at JIM@ICMGT.Com

The 2025 NMRA National Convention will be held in Novi, second week in August! More information is coming, but get your layouts in shape for open houses, prepare possible clinics and be ready to volunteer! Clinics for the 2025 Convention are being coordinated by Andy Keeney.

Hints and Tips

At Ebay, search for vintage signs and then copy. If printing on an inkjet printer, coat with Dull Coat before trying to mount on buildings. This will keep the sign colors strong.

Surface mount LEDs with 5 settings for light color are available to help make better layout lighting.

Show and Tell

John Racey
Bar Mills Kit

Bar Mills S scale Saulenas Tavern, still needs and interior, already has interior lighting.



Jim Zinser
Houghton Mi. Station

Craftsman Kit with added platform details. Can't remember the manufacturer.



Dave Thornton
Kit Built

O scale B&O I-5 Caboose.



Dan Lewis
Margo's Creamer

Kit Bashed from DPM
parts.



Larry Wolohom
Structure

Small "O" scale post
office.



Bill Bartlam
NYC Flat Car

NYC Flat Car with
Machinery load.
Converted AM Flyer
flat car with scale
wheels and couplers
plus a machinery load.



George VanDuyne
Bachmann 0-6-0
locomotive

Cast on parts filed off
and replaced with brass
casting detailed parts and
wire of various sizes.
Still needs weathering.



Fred Cosgrove
Safety Hook & Ladder Co.

Safety Hook and Ladder
Co. located not far from
the East Broad Top RR. In
Orbinsona, Pa. Kit was
bought 35 yersago. Mean
time found a built-up
model at Great Lakes
Hobbies. Kit by C. C.
Crow.



Phil Doolittle
Structures

Merchants Wholesale
Grocers. Card based
craftsman kit.



Tim Fisher
Train Station

Laser Santa Fe
standard station.



Ron King
2 GSC Heavy Duty
Flatcars in Erie

1 HI flatcar with
transformer
1 HO flatcar with large
pump
Cars are by Class One
Mode Works



Bruce Kidder
Old Torn Depot and
Water Tower

Kit made by Dura-Craft
1992



Irvin Chmielewski
Grocery Store

Charlie's Market kit
by FOS Scale Models.



Unidentified Owner
Tire Store

Show and Tell Form
not submitted



Monthly Newsletter of the **Clinton River Division** of the North Central Region of the NMRA

The Mentor/Mentee file (give help/receive help) is at

https://drive.google.com/file/d/195MkOSzCIIO4pfcGtM4LcnI-sIExBw2_/view?usp=sharing

The private **Clinton River Division Facebook group** is at

<https://www.facebook.com/groups/288929175921717/>

SCHEDULES

For more information, contact the organization listed. We do not have further details. Obviously, schedules are subject to change. Check with the venue before the event.

October 19th- Clinton River Division Monthly Meeting Canceled Due to Regional Conference

**November 16th - Clinton River Division Monthly Meeting Troy Christian Chapel
Details below**

December 2th – Division Layout Tours see flier below

**January 28, 2024 10am-3pm. Model Railroad Sale Hosted by Division 6
See flier below.**

National Convention 2025 Regional Contacts

A lot of work needs to be completed before the Nation Convention. The region has established a number of work groups that can use additional volunteers.

The following are the persons that you can contact to assist with the convention.

Chairman- Scott Kremer

Co-Chair and Hotel Coordinator - Bill Neale (Note the primary hotel responsibility is through the NMRA Meeting and Trade Show personnel)

Treasurer - Steve Harsh	Webmaster - Marshall Stull
Non-Rail - Kitty Kremer	LDSIG - Ron Burkhardt
OPSIG - Eric Smith	RPM Conference - Mike Skibbe
PR/Marketing - Jim Zinser, Barry Hensel	Layout Visit - Brook and Jay Qualmann
Op Sessions - Ken Chick	Prototype Tours - Bruce Wolfe
Clinics - Andy Keeney	Volunteers - Div 6 - Bill McMillan
Yard Sale - Greg Rich	IT coordinator - Jeff Higgins

Positions still needing to be filled.

Bus Coordinator	Contest Coordinator
Volunteers - Div 8	Merchandise - basically shirts

NO OCTOBER MEETING DUE TO REGIONAL CONVENTION

November 2023 Meeting
Live at Troy Christian Chapel and on Zoom
Thursday, November 16, 2023, 7:00 pm

Clinic –Keeping 1225 on the road.
Show and Tell will be Locomotives.

**Join us after the meeting for snacks and conversation at Leo’s Coney Island,
Walton& Livernois**

We will send you notice of the meeting and the ZOOM code a few days before the meeting. Please look in your spam folder if you do not receive it timely. Don’t ask, I have no idea why some providers think we are spam.



The Model Train Show returns to the Packard Proving Grounds on Saturday, November 25th, from 10 AM to 3 PM.
\$6 Admission; Ages 11 & Under Free with a Paid Adult Admission.

**Southeast Michigan Model Railroad & Sales Market
November 26, 2023
Washtenaw Country Farm Council Grounds
5055 Ann Arbor Saline Rd. Ann Arbor, Mi 48103
3 Miles South of I-94 Exit 175**

**Admissions: Regular - \$5.00/ Person
Children under 12 Free
Early Bird – 10.00 (8-10 am)**

**Lansing Model Train Show and Sale Nov. 5 1000-4:00
Michigan State University (Pavilion)
4301 Farm Lane
East Lansing
<https://www.lmrc.org/trainshow/index.shtml>**

Clinton River Division Layout Open House

Saturday, December 2, 2023
1-4 PM

Jim Botsko 3850 Woodman Dr., Troy, MI 48084



Based on the Southwest & Redstone Branches of the Monongehela Division of the PRR in the late 1940s, this O scale pike represents the single-track line running south from the Pittsburgh division at Greensburg, through Youngwood Yard and Connellsville, to Redstone Jct. and on to Brownsville. All the power is still steam, though a few diesels are showing up. Track and scenery are complete. There is 380' of mainline, over 80 switches, and more than 40 industries. The layout area is 23' by 47'.

Dan Lewis 3760 Samuel Ave., Rochester Hills, MI 48309

This N scale railroad is based on the MILW's North Montana Line in 1953-4 running northwesterly from Harlowton through Lewistown to Great Falls. Scenery is complete in an 18' x 24' area with many scratch-built and kit-bashed structures.

Featured in most of the major railroad magazines, the pike has 115' of mainline, 122 turnouts, and runs on Easy DCC.



3rd Annual MODEL RAILROAD SALE!

Hosted by Division 6
North Central Region - National Model Railroad Association

SUNDAY – JANUARY 28, 2024
10am - 3pm



Costick Community Center

28600 W Eleven Mile Rd, Farmington Hills, MI 48336

145 Tables of model railroad items - ALL scales!
Door Prizes Awarded every 45 minutes! *(must be present to win)*



Admission – Snacks and refreshments available
\$5 per person over 18 years old (spouses/children under 18 = FREE!)
\$10 per person Early Bird entry at 9am
VETERANS AND ACTIVE DUTY SERVICE MEMBERS FREE (WITH ID)



Information –
Barry or Terry 734-649-3056 (6pm-9pm) div6trainshow@gmail.com
VENDOR INFO on back side of this flyer!

