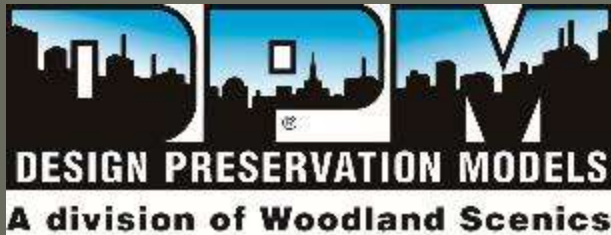
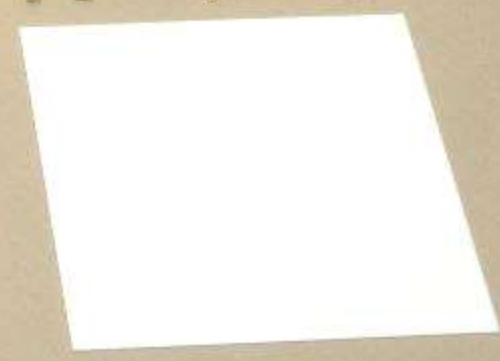
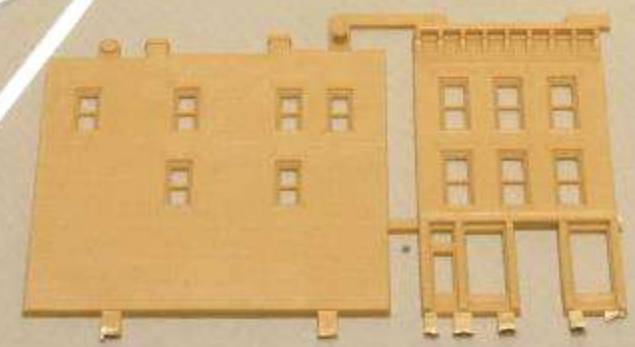
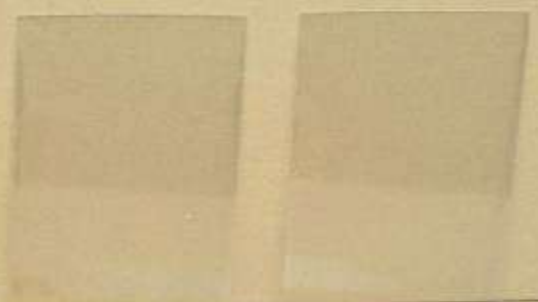
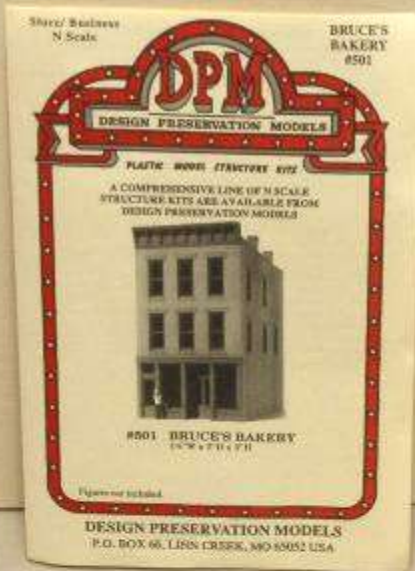


# DPM

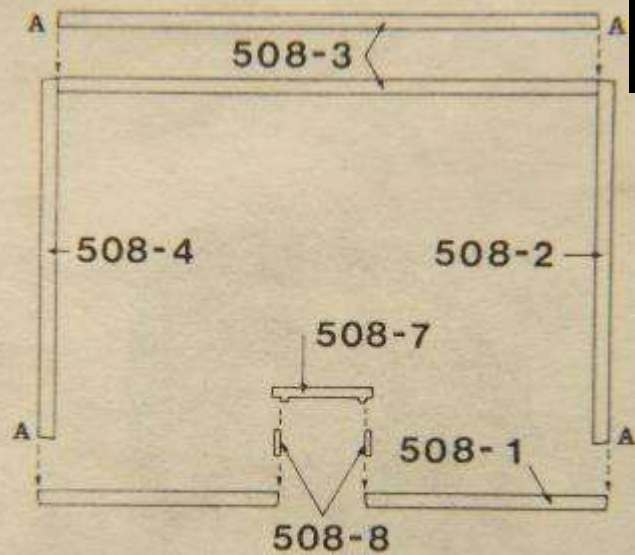
*getting the most out of the Design  
Preservation Models kits*





**DPM kits come in O, HO and N scales. The basic kit contains:**

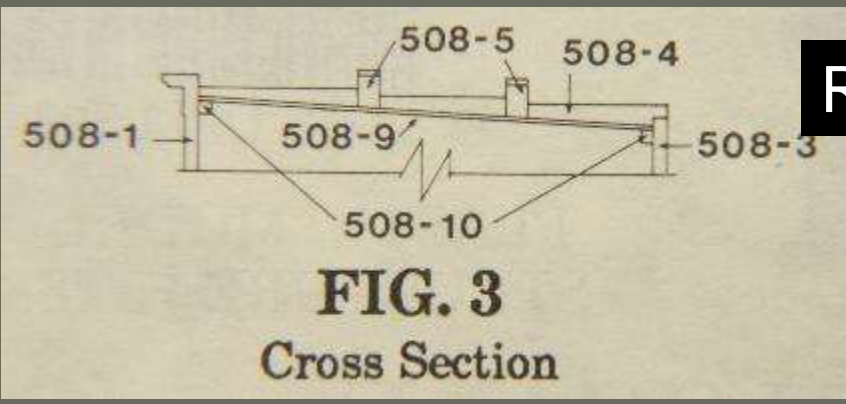
- Instructions
- Glazing
- Four walls
- Other parts
- Sheet stock
- Strip stock



Footprint

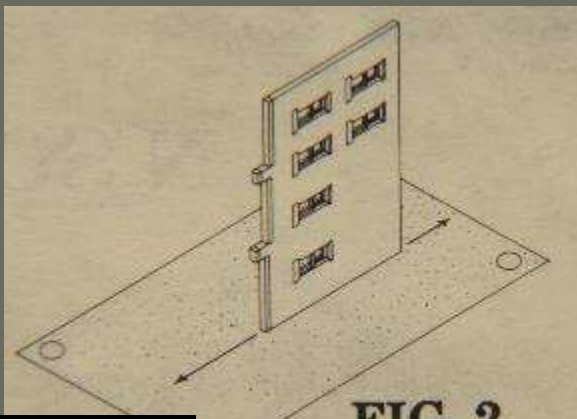
**FIG. 1**

Plan (view from top)



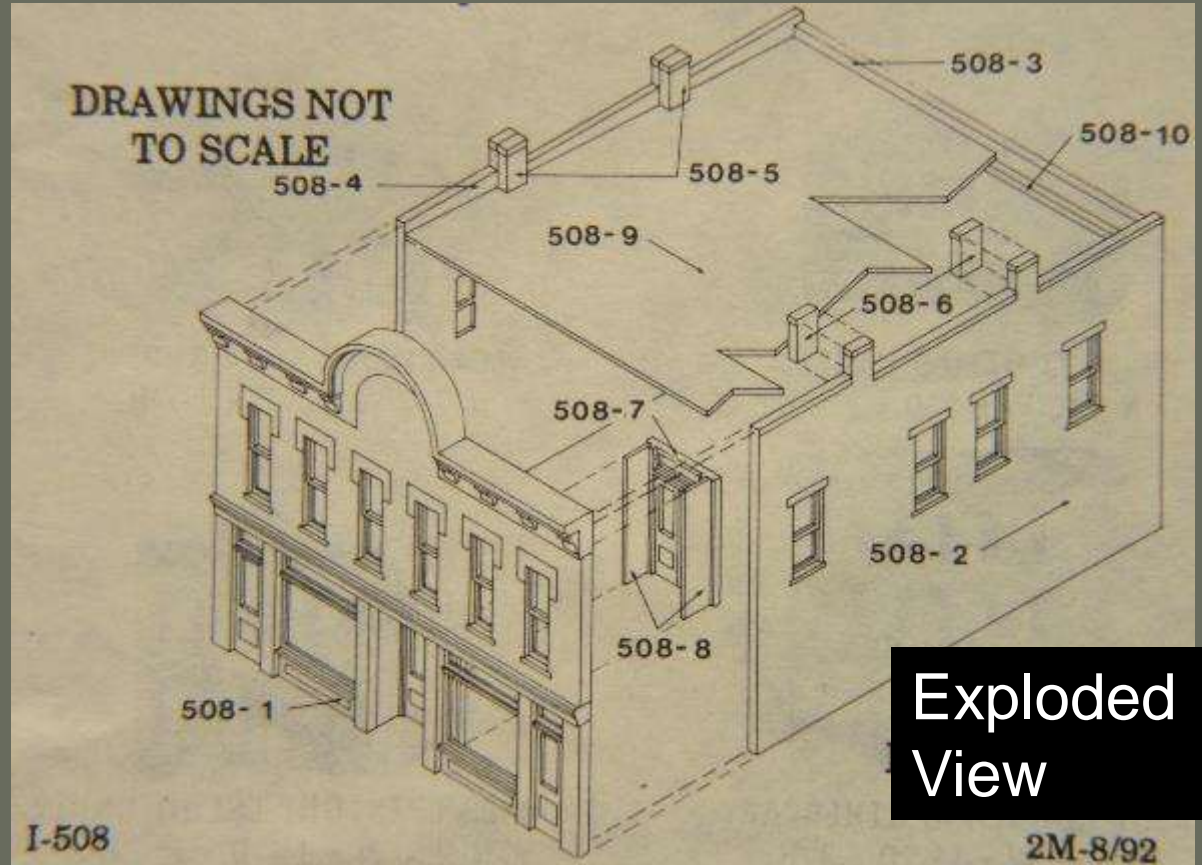
Roofing

**FIG. 3**  
Cross Section



Sanding

**FIG. 2**  
Sand edges square.



Exploded View

# **The basic DPM kit typically does not contain...**

- Foundations
- Detail parts
- Tips for construction techniques
- Options for kit-bashing
- Painting, finishing & weathering instructions
- Suggestions for window treatments

# Styrene Solvents



Micro-mark offers “Same Stuff,” which is the same as the discontinued Ambroid Pro-Weld.

# Enhancing the basic kit without substantial changes



**BRUCE'S BAKERY** is one of the smaller kits.

- *Here, it is as pictured in the Walther's Catalog.*
- *With no basic changes in the footprint, the kit can be enhanced in several ways.*

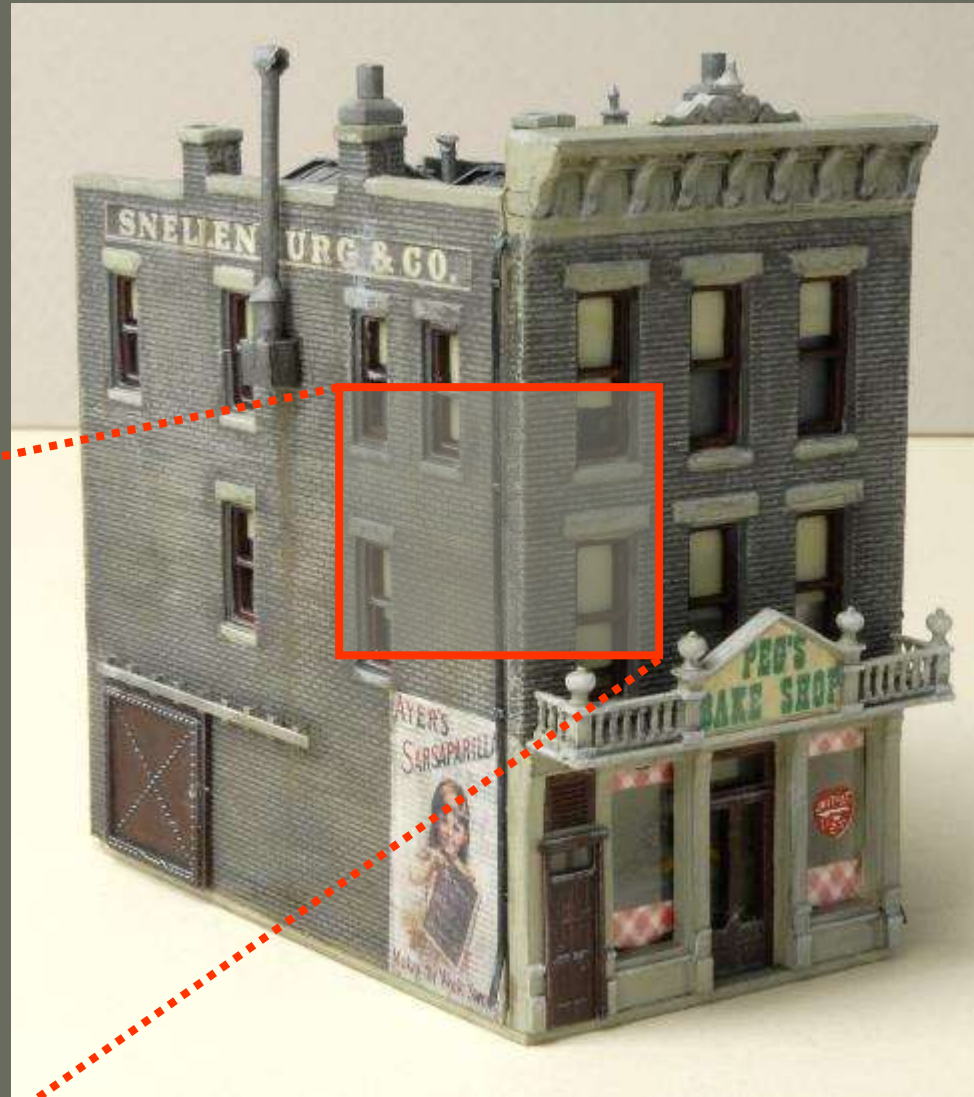
# Basic Painting

*First, the four sides were primed gray (automotive primer)*

*Then, the sides were give a heavy wash of Polly Scale Dark Gray mixed with Dirt color.*

*When dry, fine grit sandpaper (300-400) was used to sand off the surface paint, leaving the dark gray in the brick striations for mortar joints.*

*Windows, headers, sills and trim were brush painted.*



# Left side details...

## Chimney top

*Simulating tin flashing for extended chimney*

## Vent pipe

*Use styrene square rod for the junction box*

## Roof drain

*Brass rod with wiring insulation for pipe couplers*

## Freight door

*Use styrene strip stock to construct the hanger*

## Signage

*Embossed*

## Foundation





# Front Details...

Cornice ornament

*White metal detail part*

Window shades

*Painted on the interior*

Balustrade & sign

*White metal detail part*

Dry transfers

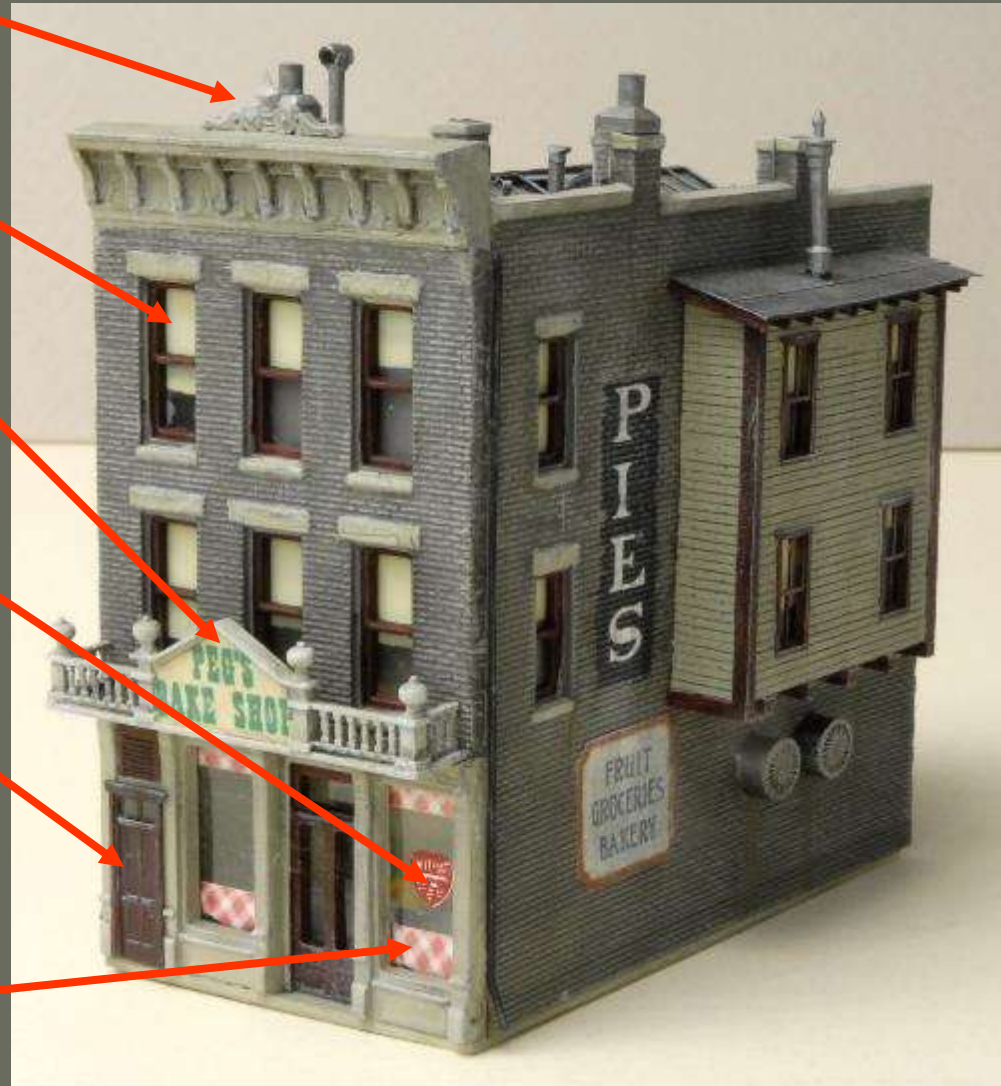
*Woodland Scenics*

New pedestrian door

*Use a vent to block  
clerestory window*

Curtains

*Clipped from a catalog*



# Right side details...

**Chimney top**

*Matches left side*

**Roof drain**

*Matches left side*

**Scratch-built bay**

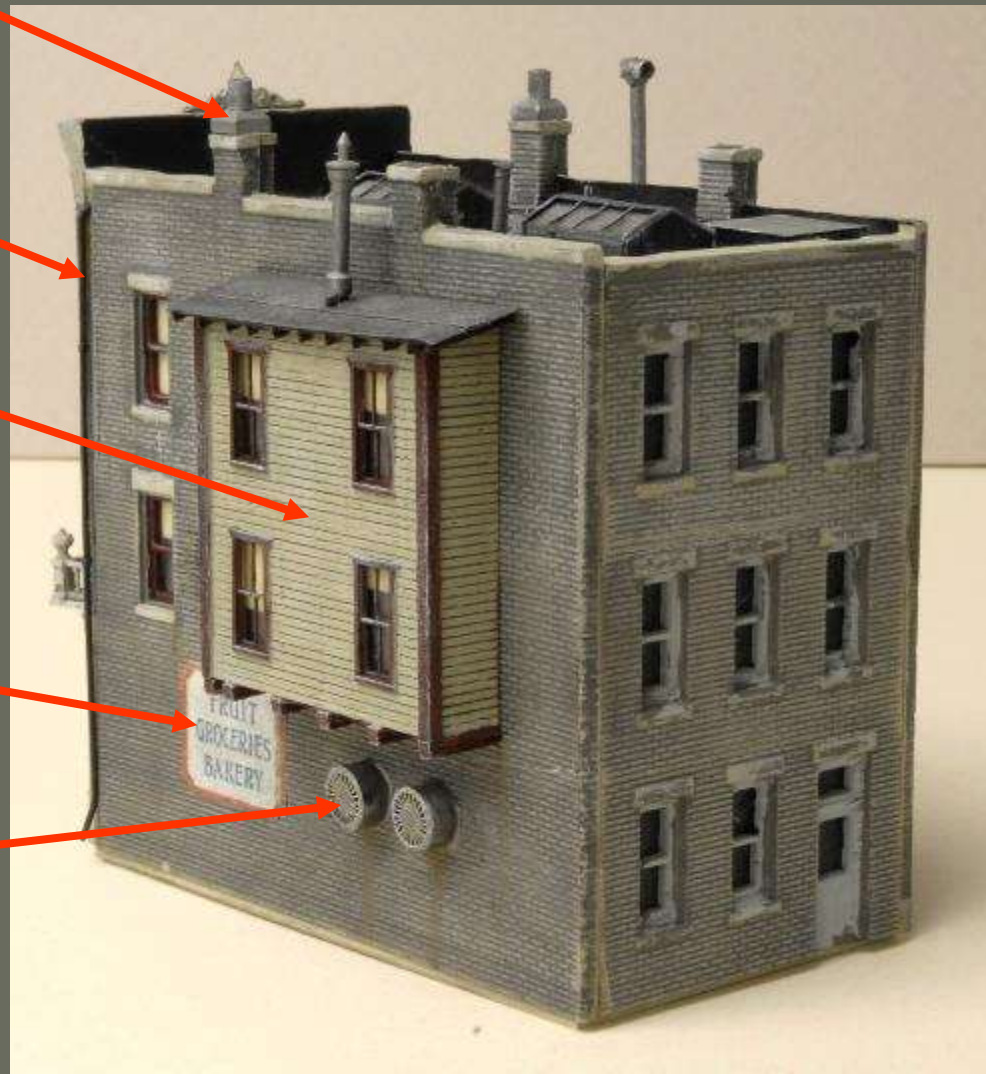
*Scribed basswood,  
Grandt Line windows,  
rafter ends, stove pipe*

**Sign**

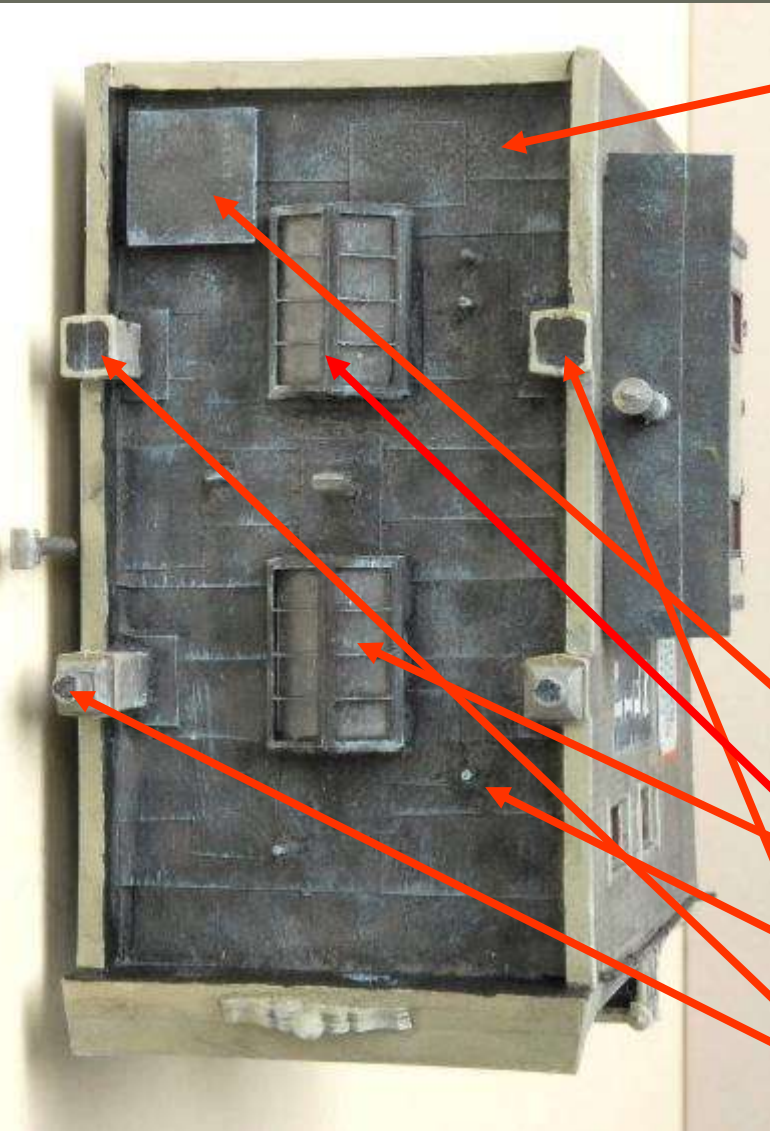
*Embossed*

**Kitchen blowers**

*Etched brass diesel fans  
and MacDonald's  
straws*



# Roof Details



## Simulated tarpaper

- *If the sub-roofing is styrene, laminate paper to it with contact cement before installing rolled roofing strips*
- *Use grained paper for roofing strips*
- *Paint Grimy Black*
- *Dry brush with Light Gray*

## Access Hatch

## Etched brass skylights

## Roof vents

## Painted chimney holes



## Finishing Tips

Once all the construction and painting is complete, float a final coat of alcohol/ink mixture over the whole structure to tie everything together.

Dry-brush the window sills and door frames with Light Gray Polly Scale paint.

# Another Kit with Minimal Changes



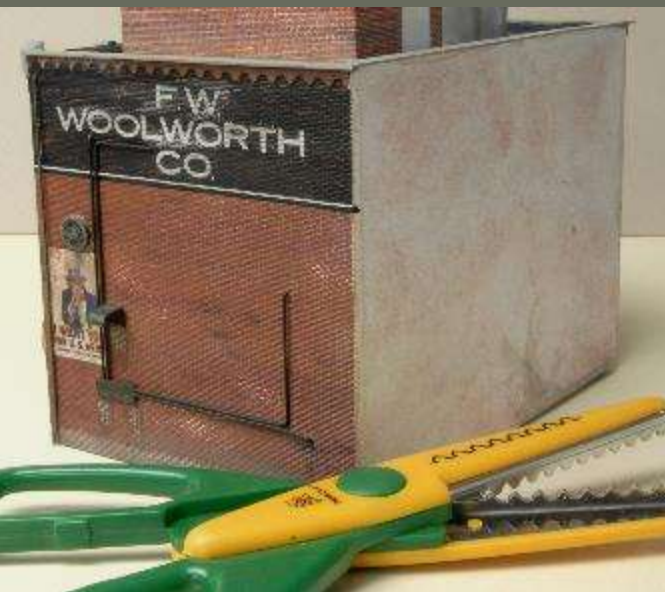
## ADDED DETAILS

- *Window displays*
- *Main entrance sign (Bar Mills)*
- *Painting variations*
- *Roof gizmology*

# ADDITIONAL DETAILS



- *I substituted the solid wall ends for the windowed ends, since on my layout this structure would not function as a corner building*
- *Signage*
- *Extra plumbing, conduit, blower, vents, drains and signage—plus cornice gingerbread*
- *Roof access and roof “gizmology”*



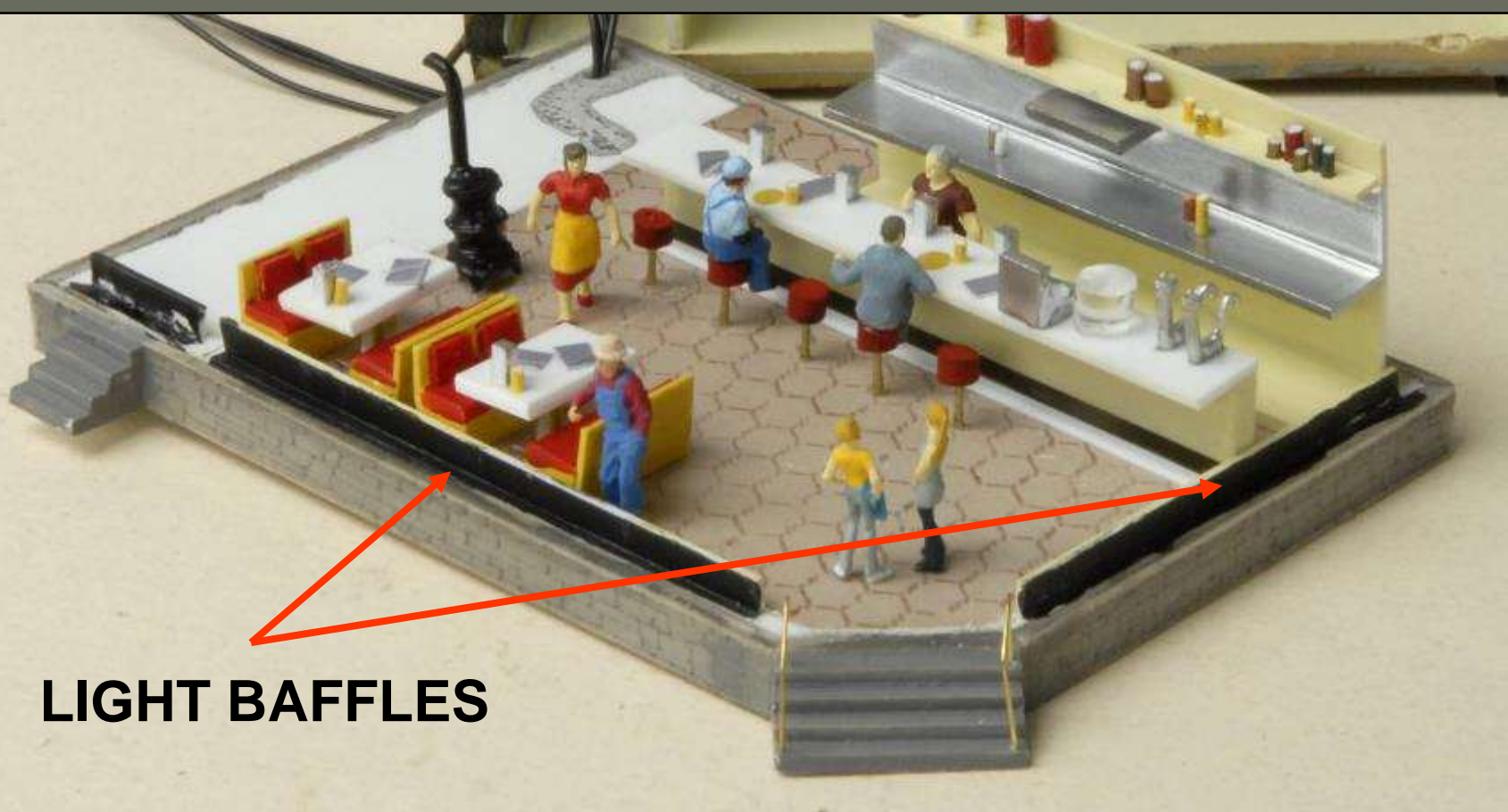
# Super-detailing an Interior



## CORNER TURRET BUILDING

*Besides an added foundation, steps and other detailing, the primary distinction is an elaborately detailed interior.*





## LIGHT BAFFLES

Besides the scratch-built interior, it is critically important to create baffles to eliminate light leaks between the shell and the foundation.





# Source for Period Signage

Desperate Enterprises, Inc. 728 Smith Rd., Medina, OH 44256

[www.desperate.com](http://www.desperate.com)

(800) 732-4859



Sealed Product



McCORMICK - DEERING  
**FARMALLS**  
**SOLD HERE**

Farmall Sold Here  
Cat. # 26 16"W x 11½"H

New Image!



A Tradition of Excellence  
CASE  
Established 1874

Case Tractor Tribute  
Cat. # 877 12¾"W x 16"H



For Easier, Faster Farming  
New design for a FARMALL

Farmall M  
Cat. # 825 16"W x 12¾"H



**FORD FARMING** MAKES LESS WORK. MORE INCOME PER ACRE  
New Better Than Ever!

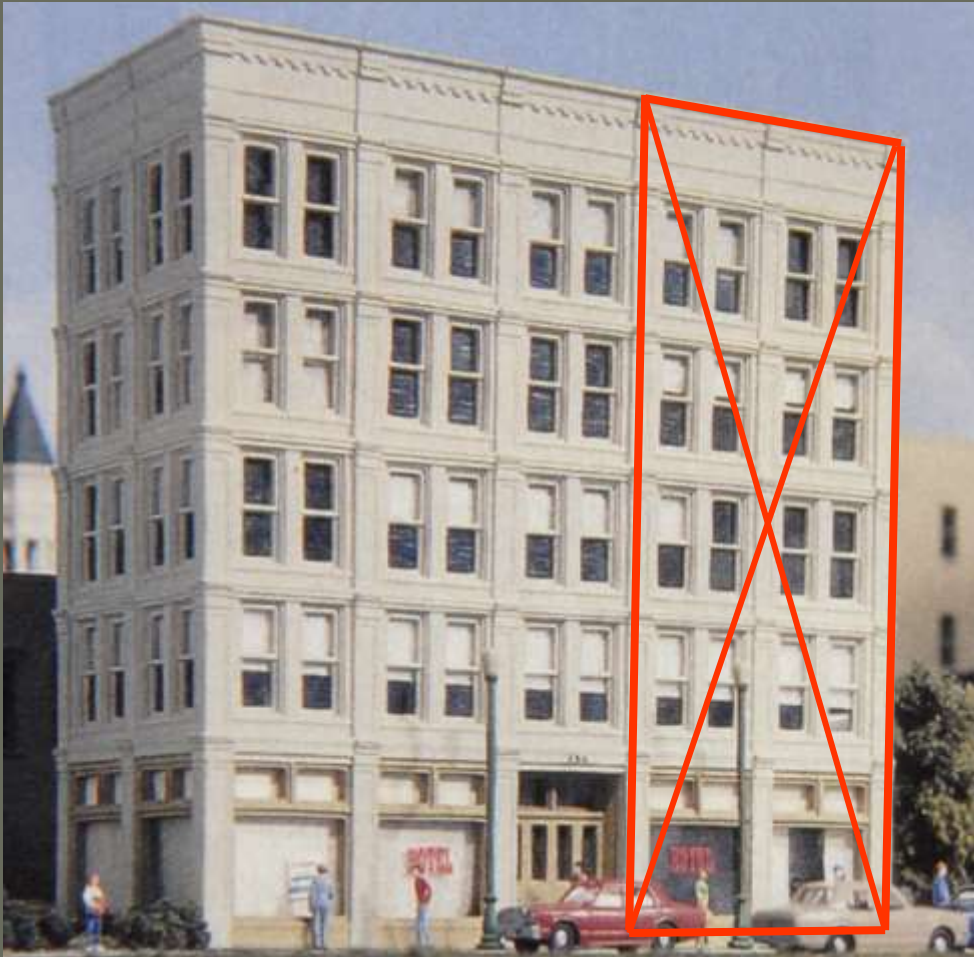
Ford Farming 8N  
Cat. # 758 16"W x 11½"H



**POWER** THAT DOESN'T GET TIRE  
FROM THE WORKING BEST TOUGH

Ford Golden Jubilee  
Cat. # 699 16"W x 10½"H

# Cutting Up a Kit



## HILLTOWNE HOTEL

- *Medium sized kit as pictured in Walther's Catalog*
- *This kit can be reduced by sawing off one end.*

# Reduction

## Cutting

*To cut off bays, use repeated scores with a hobby knife or use a small razor saw.*

## End Wall

*Here, because the end of the hotel would be butted against another structure, I elected to use styrene sheet for the end wall and paint it black.*



# Painting

## Exterior

*Using rattle cans (gray primer first, then flat black, then flat white), I lightly misted the colors into each other while wet and allowed them to bleed.*

*I brush-painted the window trim.*

## Interior

*I painted the interior flat black (to seal light leaks from interior lighting).*



# Frontside Details

## Sign

*Scratch-built*

## A/C units

*For premium rooms only*

## Window Shades

*Tan paper*

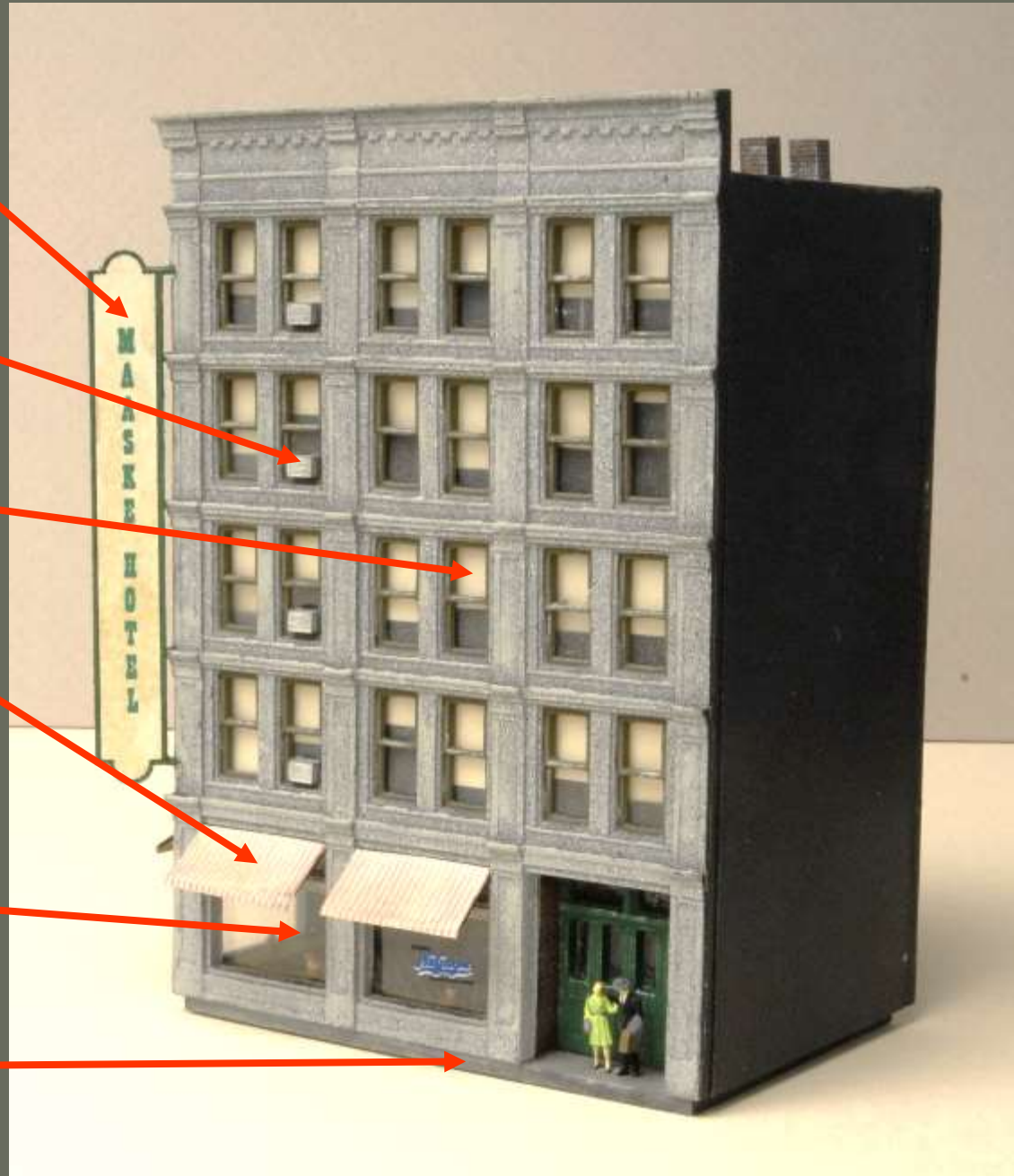
## Awnings

*Clipped from clothing catalog*

## Lobby Interior

*Counter, people, flowerpots*

## Foundation



Block out  
some  
windows to  
simulate  
unoccupied  
rooms



# Backside Details

## Bricked windows

*Different bricks suggest later additions*

## Signage

*Dry transfers*

## Bay window

*Scratch-built from wood*

## Blowers

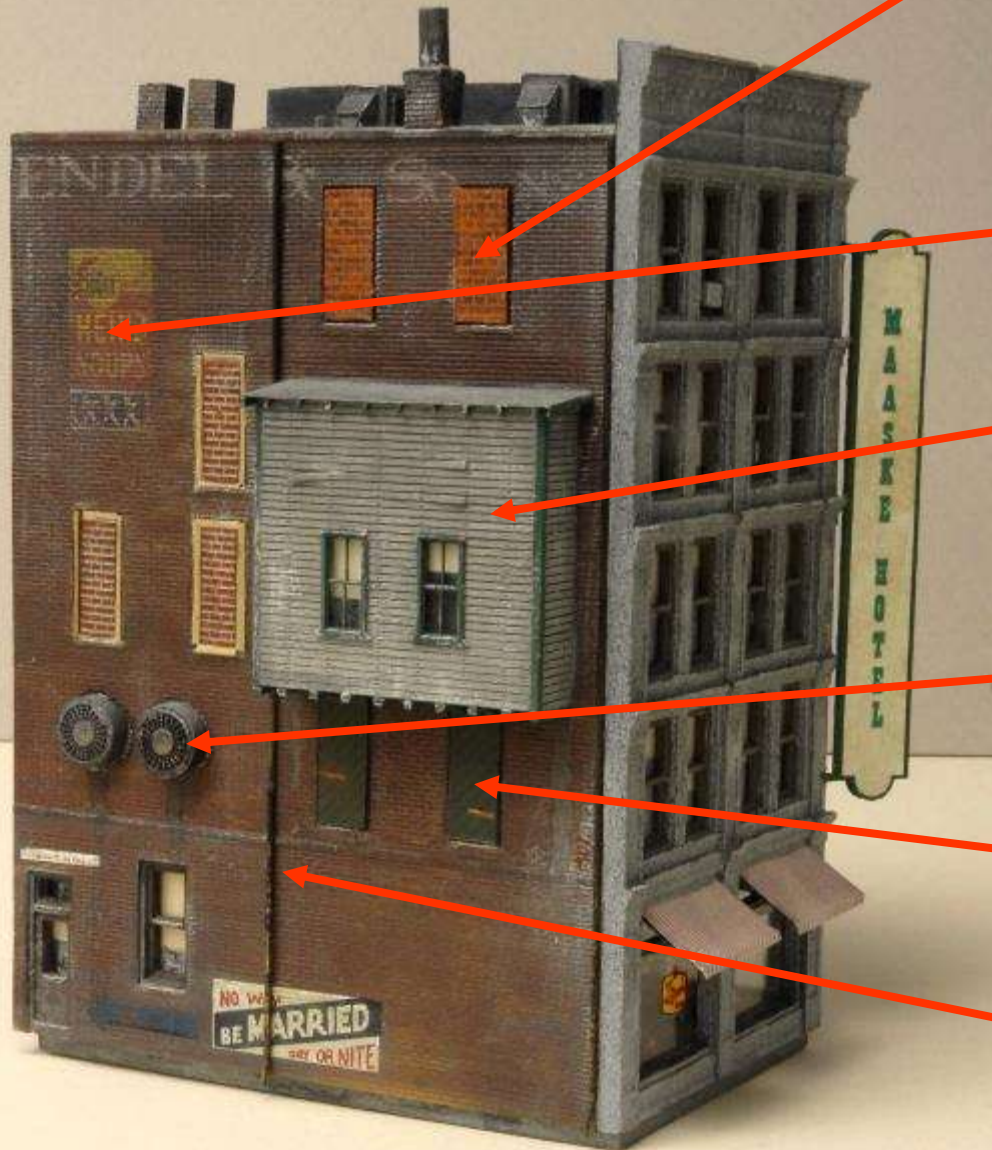
*Diesel grills & straws*

## Shuttered windows

*From the scrap box*

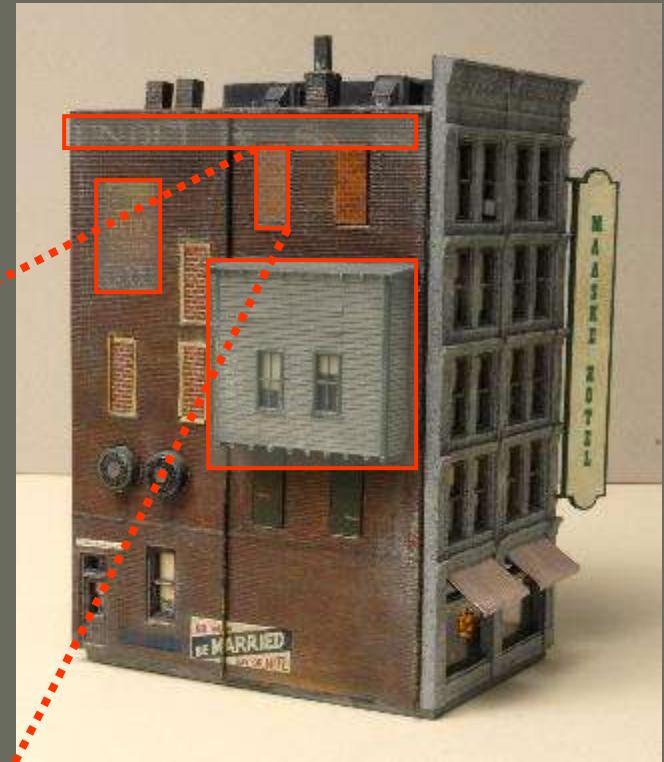
## Drain pipe

*Brass rod with gun bluing*



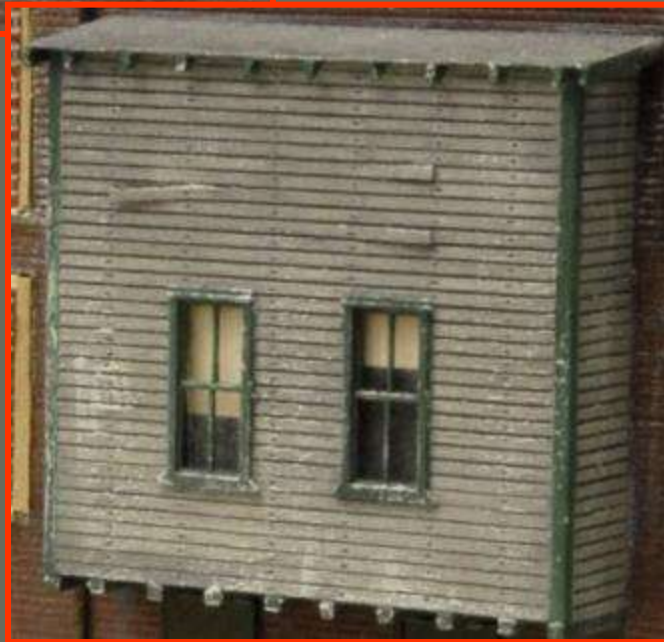
# Finishing Tips

Weather over signs and lettering



Vary brick color

Use a chisel blade to lift up "loose" boards; use a pounce wheel to make nail indentations





# Roof Details

Dry-brushing emphasizes form and illuminates details; it simulates light that bounces off of sharp edges



Patched roofing

A/C units

Access trap door

Chimneys

Vents

Chimney extension



# Expanding the Basic Kit



## ERIK'S EMPORIUM

- *Here, pictured in the Walther's Catalog*
- *By adding scratch-built extensions on the front and left side, the character of the building will be changed significantly.*

# Expanded Footprint

Viewed from the bottom, you can see the porch extension on the front of the structure and the garage extension to the side.



# Foundation

*The kit walls may be built as designed.*



SIDE VIEW

Porch steps and a foundation can be constructed from layers of styrene sheet stock to fit the building shell.

Interior window displays can be scratch-built on the foundation base.



FRONT VIEW

# The Porch

- Acid etched metal corrugated roofing (Archer's Etchant)
- Dry transfer sign with highlighted letters (white charcoal pencil)
- White metal porch posts



# STYRENE SCRATCH- BUILT GARAGE

- *Squirrel cage  
roof blower*
- *Commercial  
doors and  
windows*
- *Simulated  
tarpaper roof*





RICAL & PLUMBING

tools · impliments

J. CLEMENTS HDW...

DELIVER TO  
YOUR HOME  
FREE



# Expanding a Kit Lengthwise

Once again using Bruce's Bakery kit, here I've made the structure much more linear:

- Using brick sheet stock to match the kit, I hid the seam with drain pipes.
- Large signage eliminates the need for cutting more windows.



# Doubling a Kit

*This kit lends itself to doubling by joining two kits side by side and extending the sides*



**CORNER  
APOTHECARY**

*As shown by Walthers*



# Special Treatments

Scratch-built  
water tank

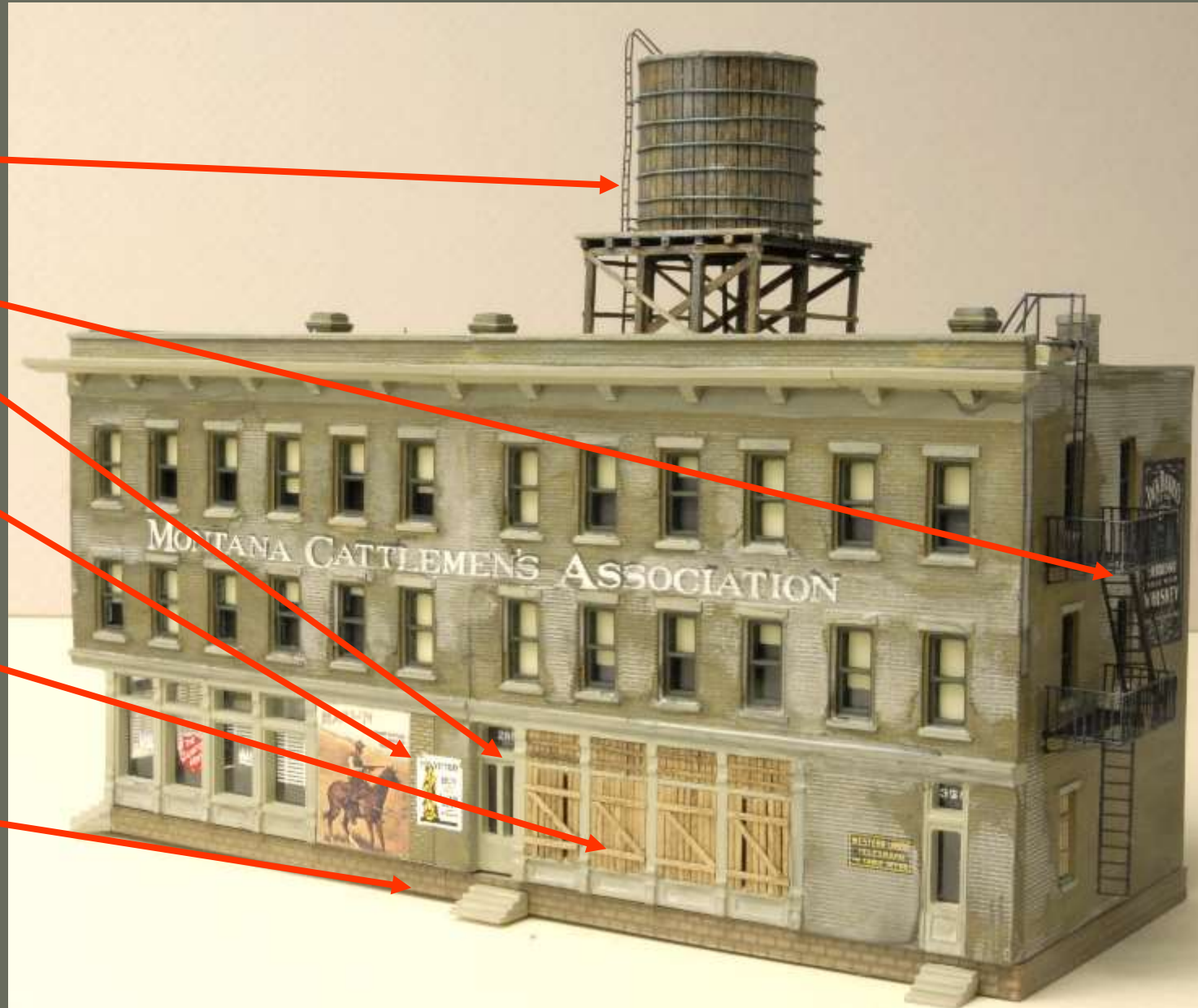
Fire escape

New doorway

Blocked  
doorway

Boarded  
windows

Foundation  
and steps





STORAGE

FW  
WOOLWORTH

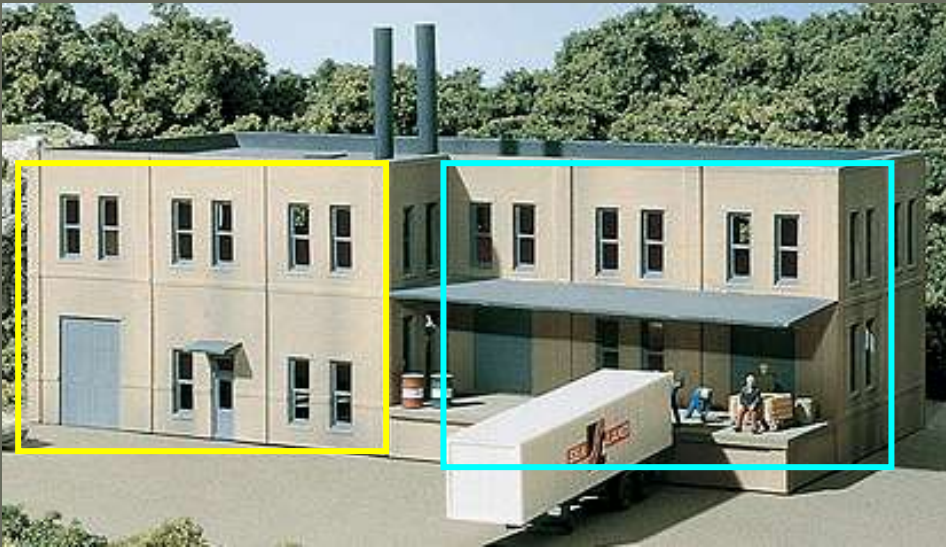
MONTANA CATTLEMEN'S ASSOCIATION

RICAL & PL

Swift's  
Premium

DRESSED MEATS

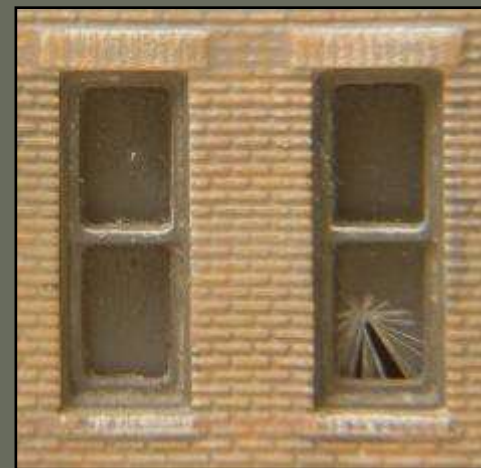
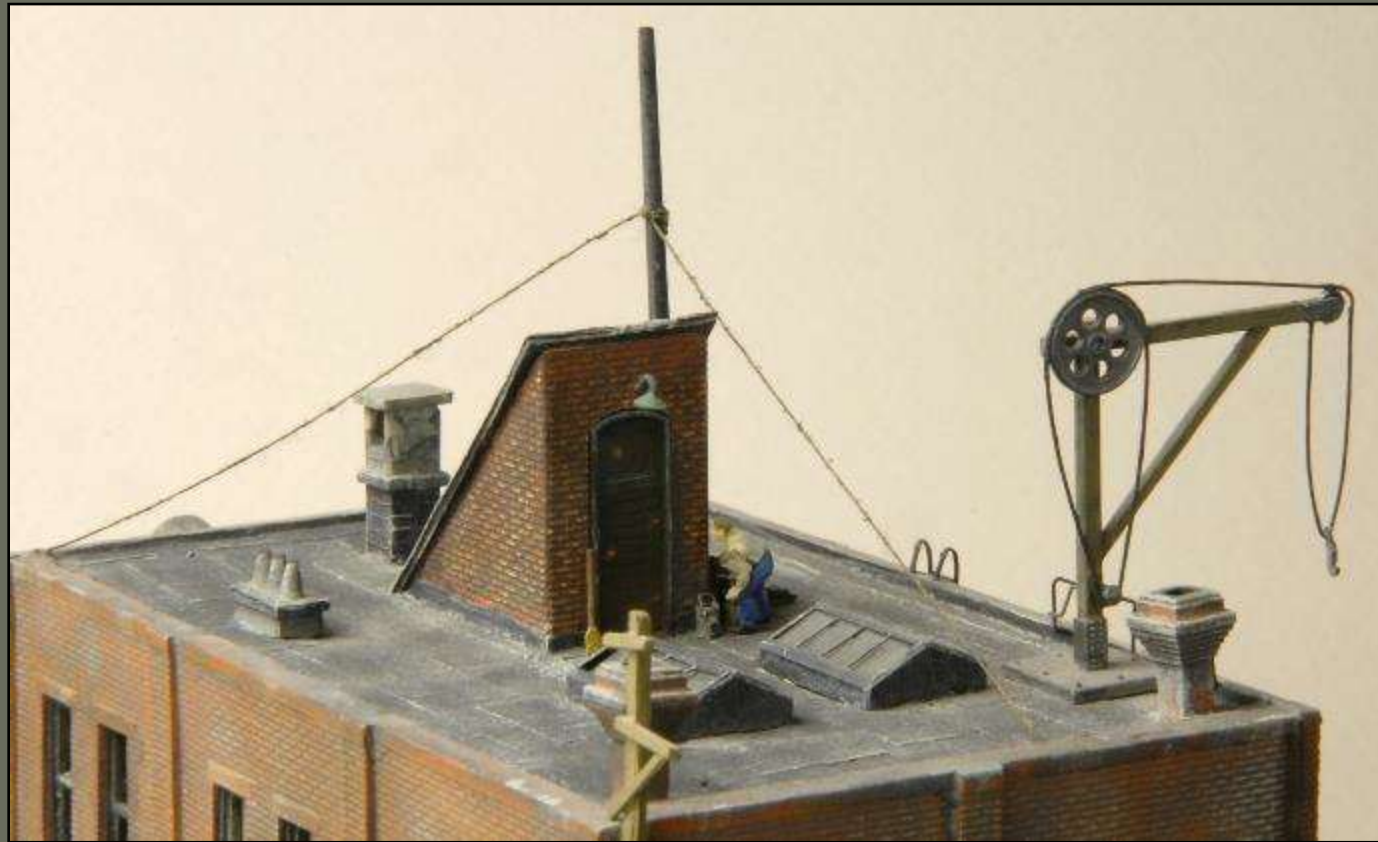
# More Extensive Kit-bashing



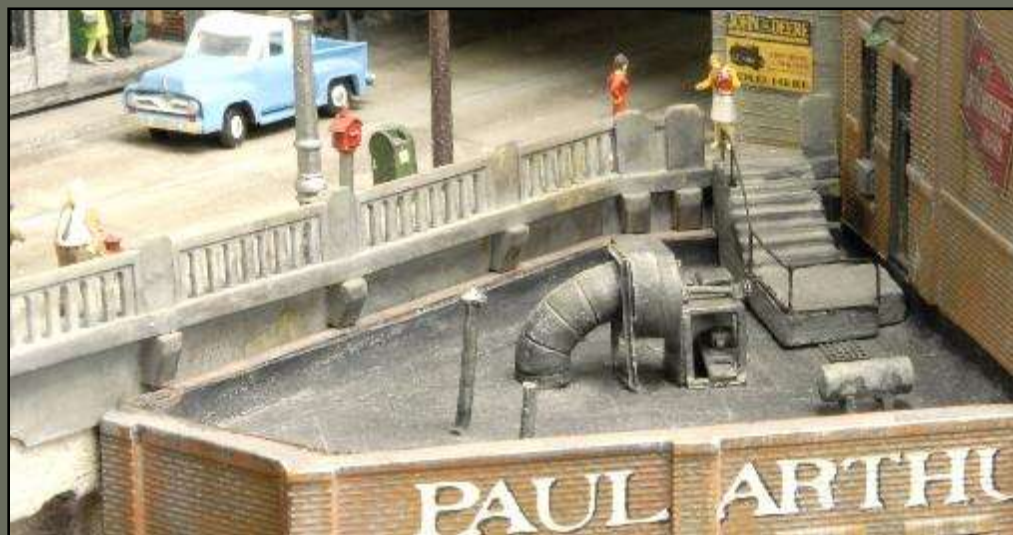
## GRIPP'S LUGGAGE

*Because of the complexity of the  
kit-bash, photocopy the kit sides  
so the details can be worked out in  
advance using paper copies.*





## Added Details

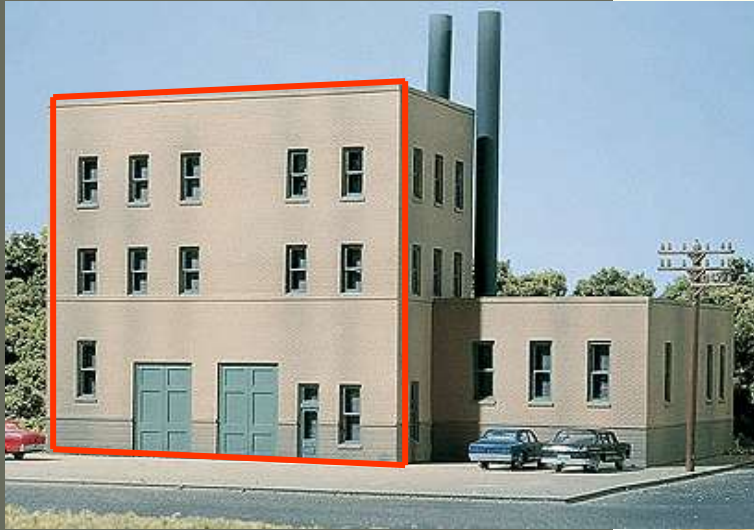


- *Broken window pane*
- *Roof stairway access*
- *Roof crane*
- *Upper level street access*



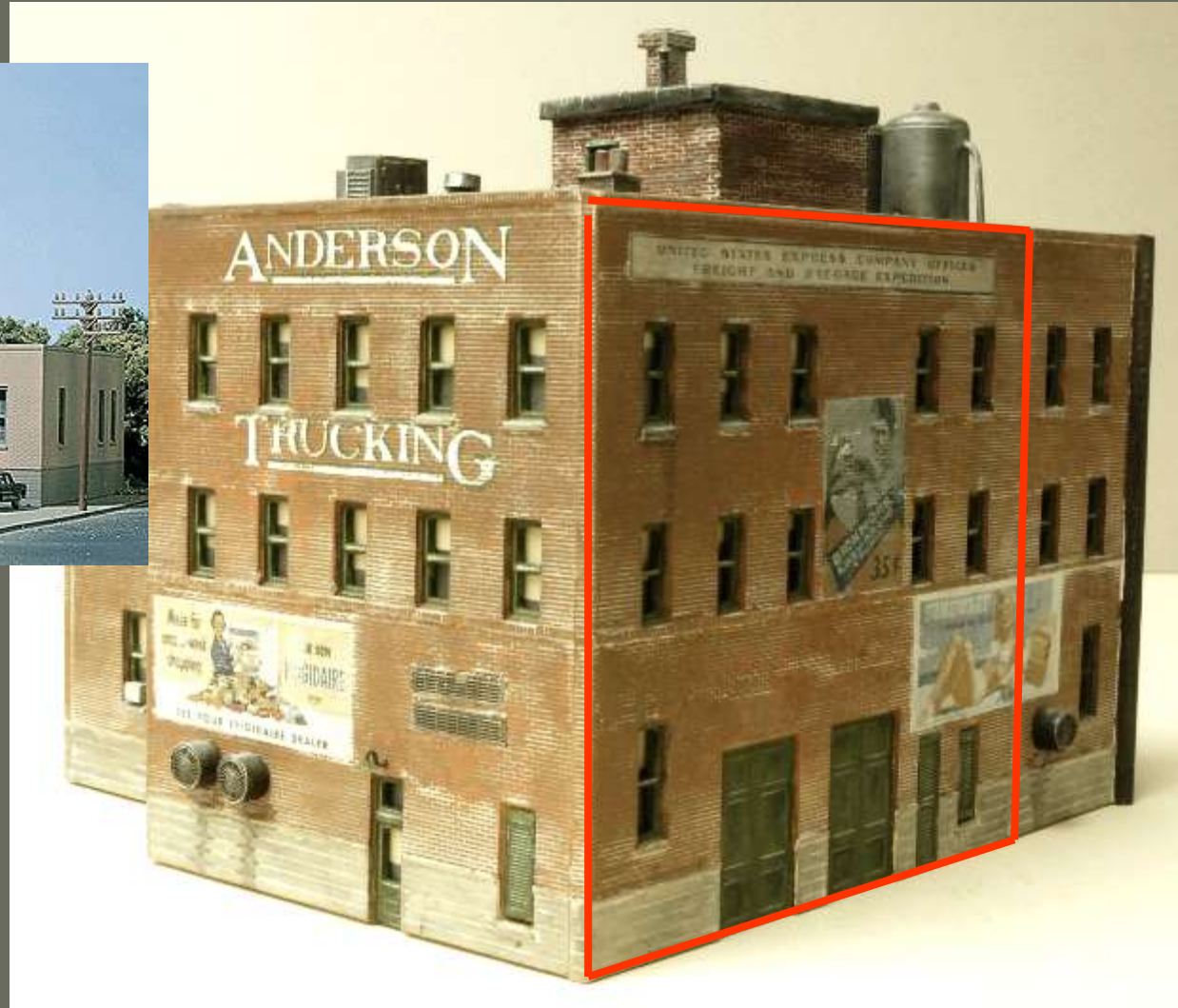
I added an extensive scratch-built icing platform and cut in a special door for the icing conveyor.

# More Kit-bashing



## GOODNIGHT MATTRESS CO.

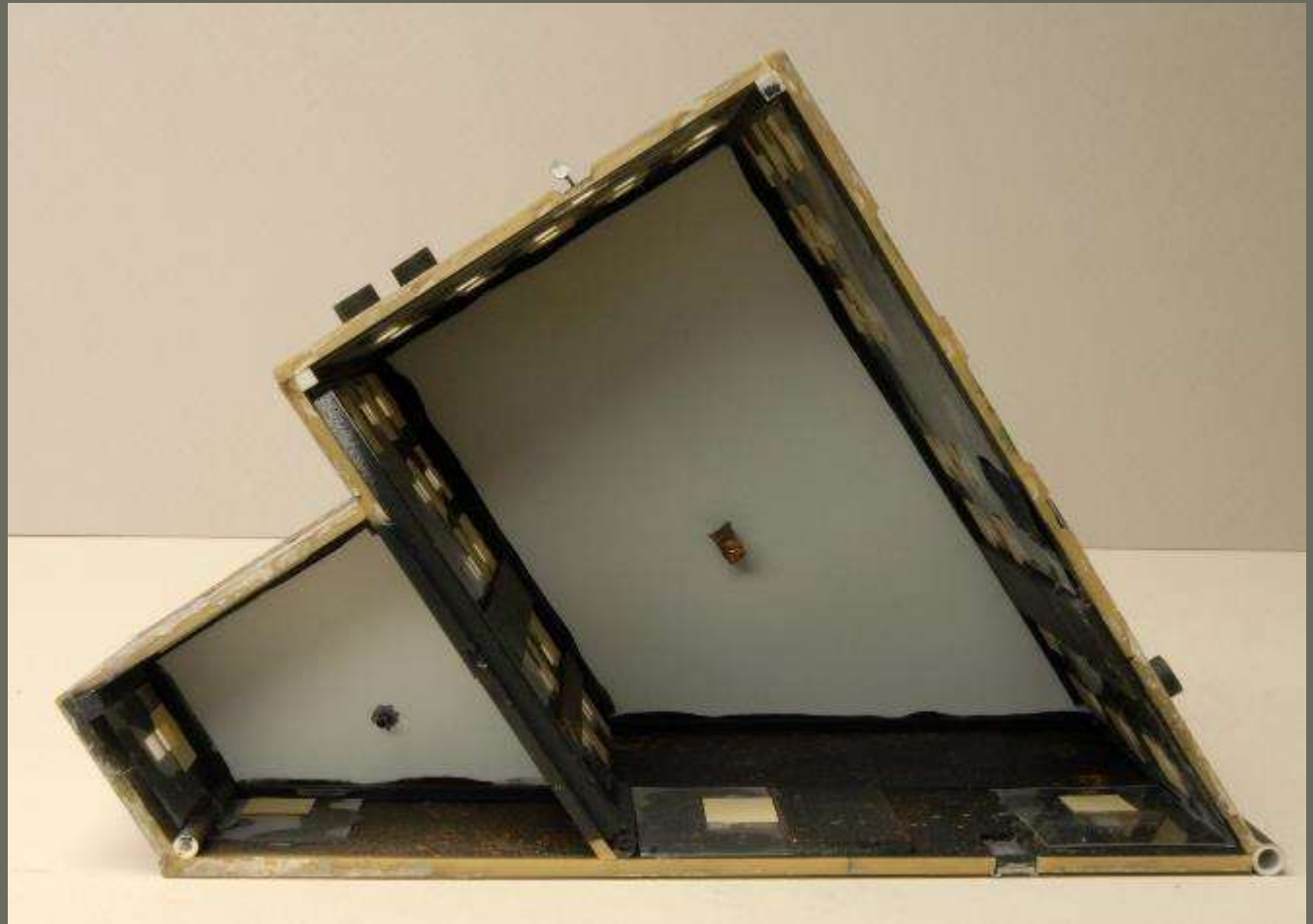
*As before, it helps to photocopy the kit pieces in order to plan the kit-bash effectively.*





# Changing the Footprint

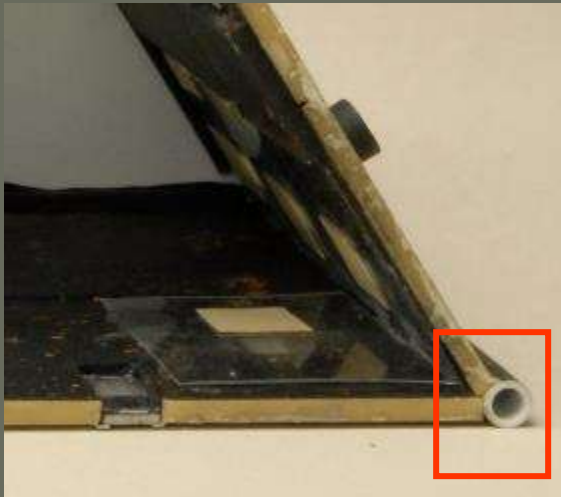
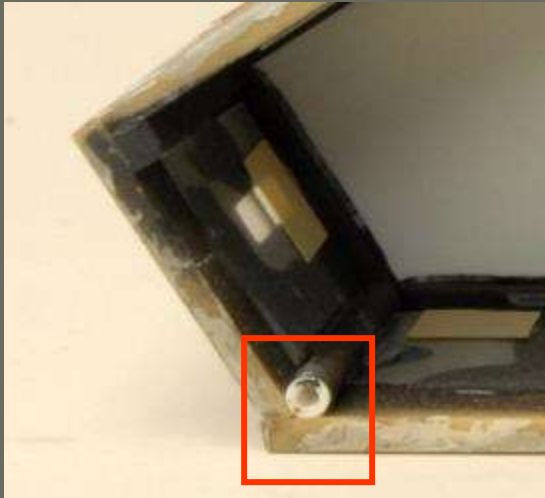
When changing the footprint to an angled shape, the angled corners, which are no longer square, become challenges.

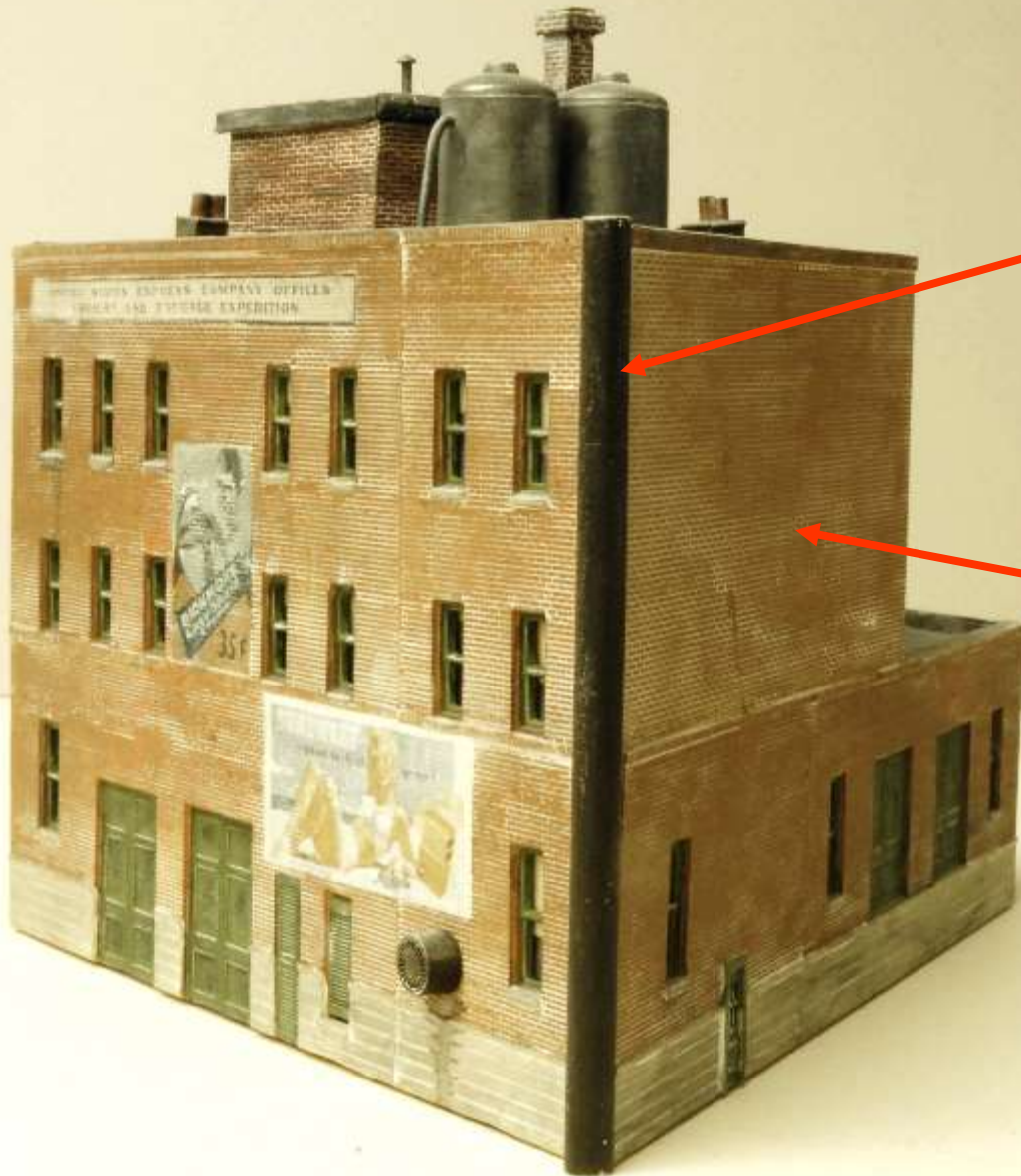


# Tips for those Oblique Angles

**Sand the edge to a bevel instead of trying to cut through thick styrene:**

- *Use coarse sandpaper on a hard, flat surface for the major sanding.*
- *Sand in a circular or Figure 8 design to avoid unevenness.*
- *Use finer sandpaper for final smoothness.*
- *Piping (styrene tubing) can be used on the outside of oblique angles to form the leading edge or on the inside for additional bracing.*





Piping (styrene tubing) for the oblique angle edge

Brick sheet stock for large brick areas.

Not all wall seams need to be hidden; walls seams are not uncommon in masonry as expansion joints.



# ROOFING DETAILS

*Tarpaper roofing*

*Elevator housing*

*Chemical tanks*

*Chimneys*

*Vents*

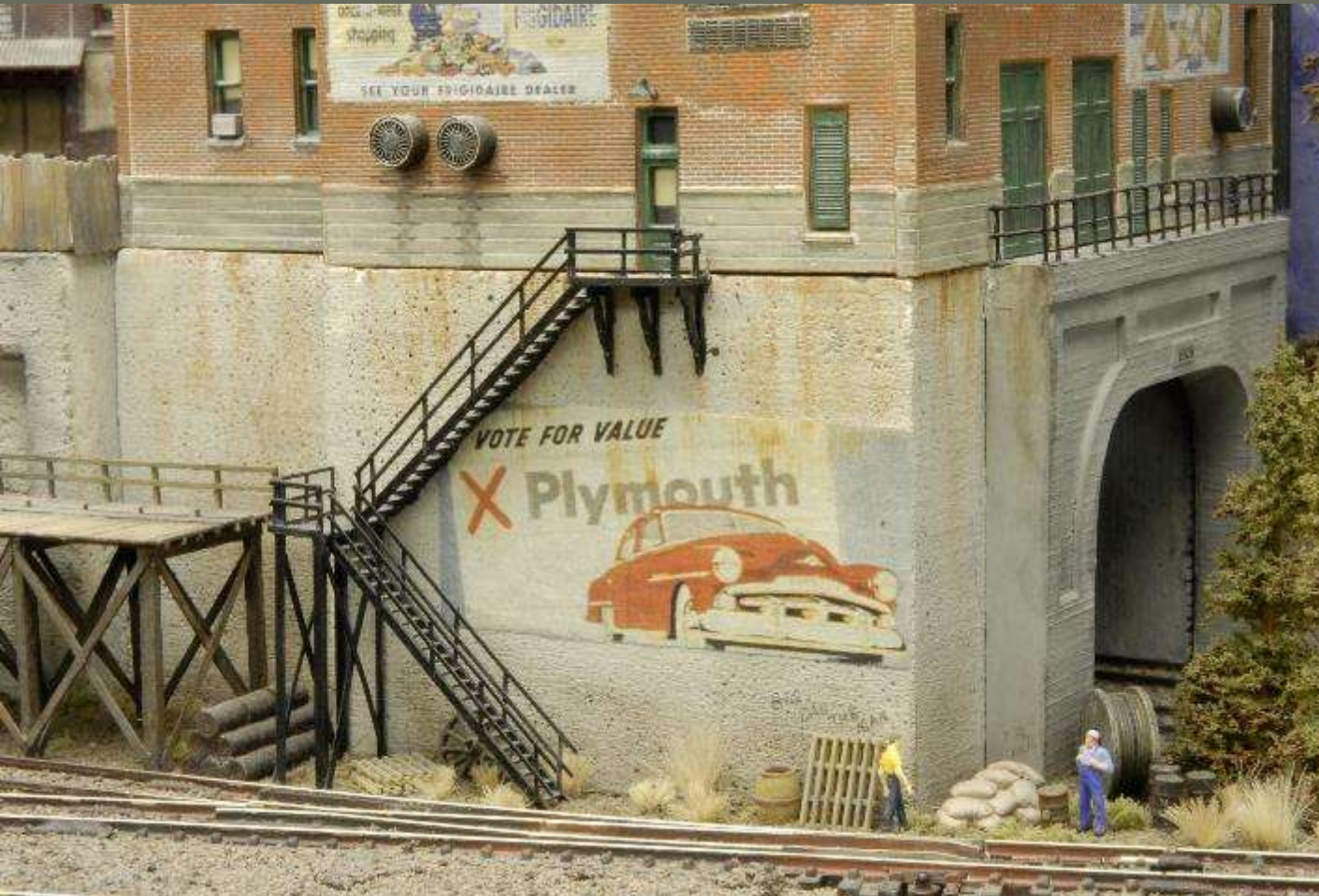
*Pallets*

*Clutter*

**Dry-brushing highlights  
the details!**



# Adding a large foundation structure



Large foundation structures can be added by casting them in plaster using balsa wood molds.

Here, the foundation structure also features a tunnel.



ANDERSON  
TRUCKING

ALL YOUR TRUCKING NEEDS

FOR VALUE  
Plymouth

HARRIGAN'S LAUNDRY

THE  
HILWALKEE  
ROAD

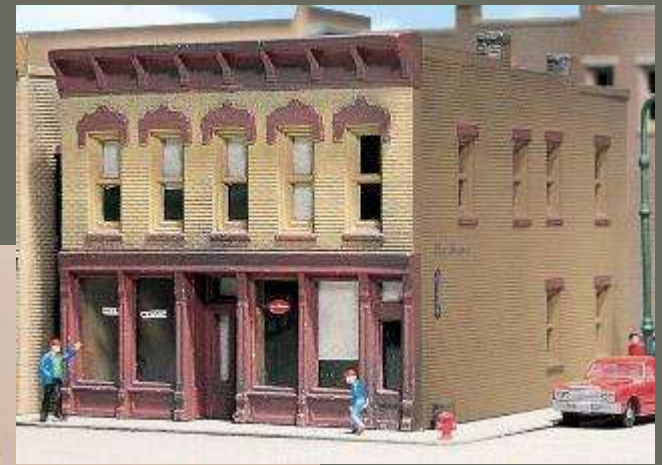
CANNING

# Crestone Credit Union





# Haye's Hardware



# Char's Soda Shoppe



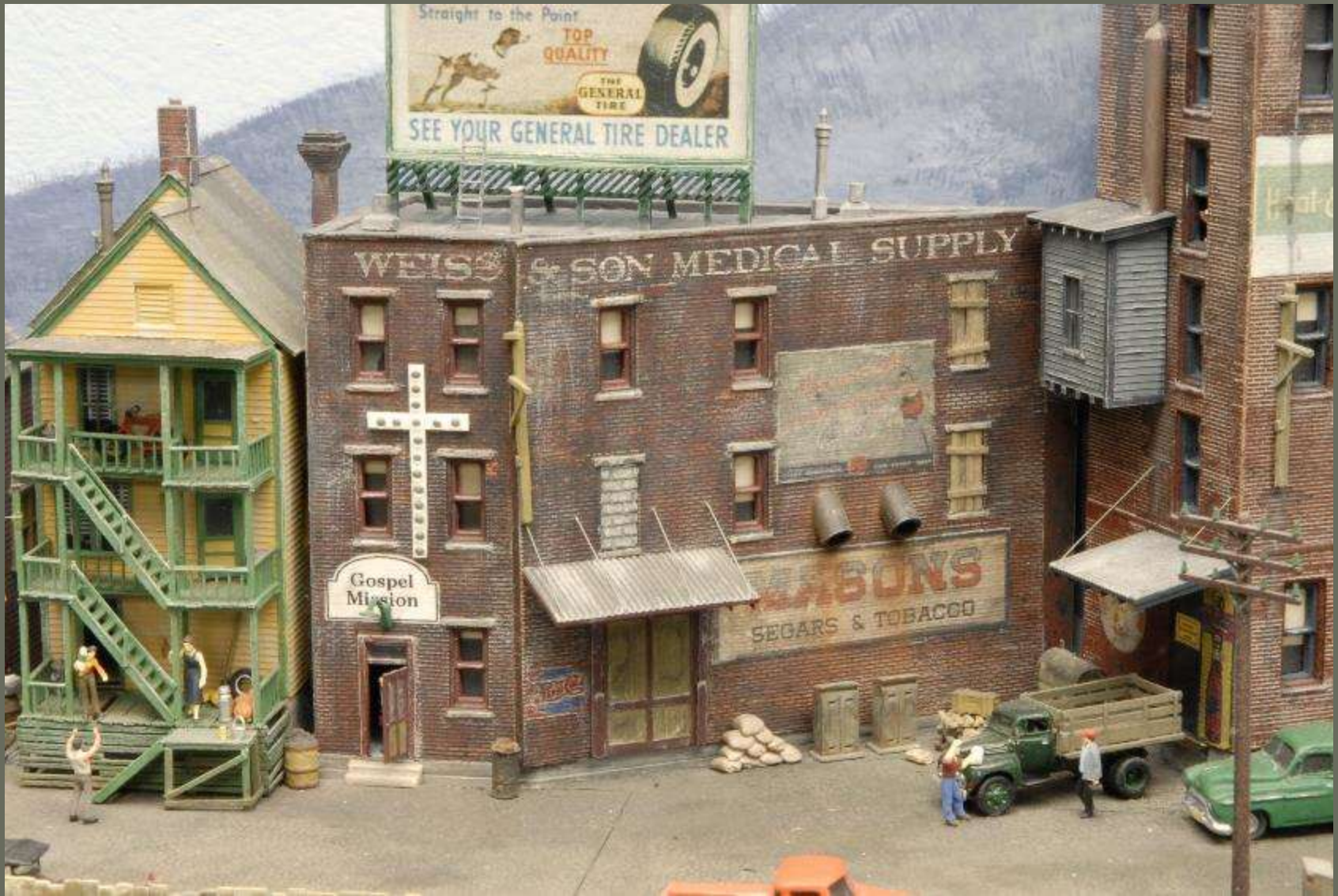


# Cricket's Salon



# Scrapbox Stuff

This relief structure was created from left over pieces from other DPM kits.



Use a small flame to melt the ends of fiber optics into simulated light bulbs.



Thread multiple fiber optics to a common light source.



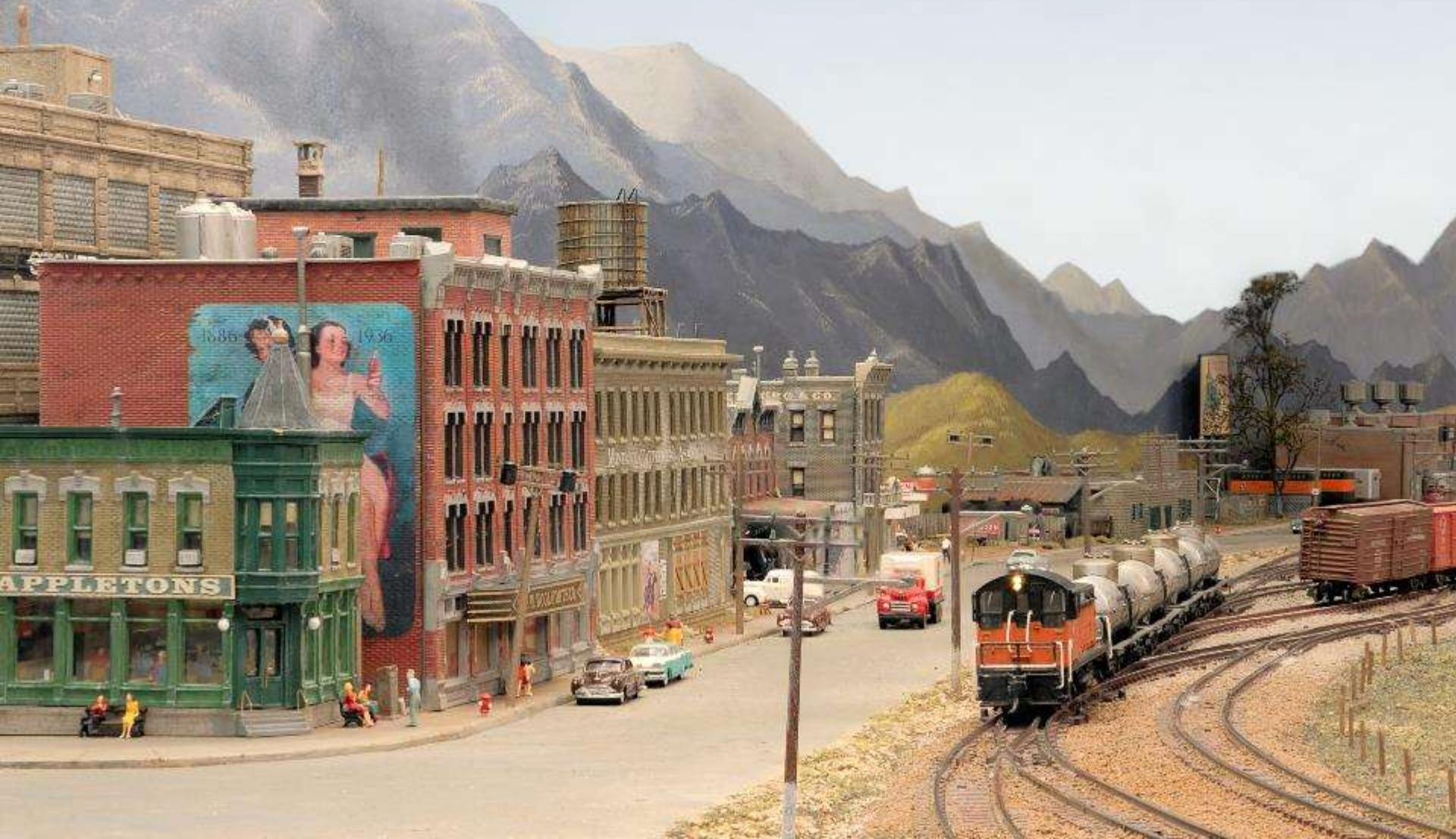


Bricked in windows and watersheds add interest

Vents are found on the sides of buildings, along with lots of signage.



**“DPM City,” featuring five of the super-detailed  
DPM kits we’ve discussed**



*That's all Folks!*