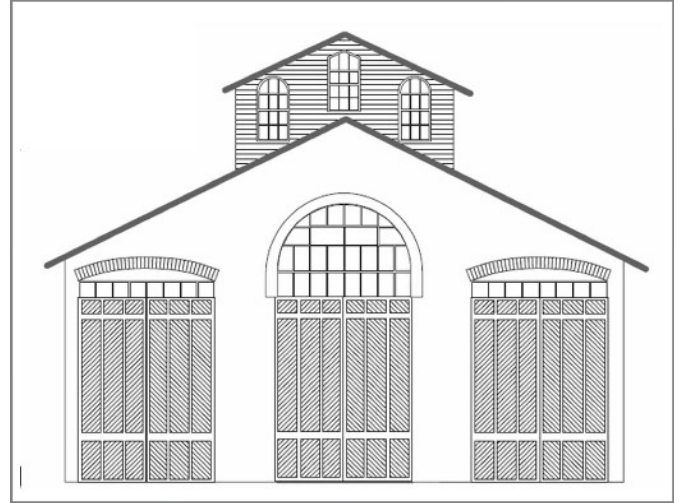


# CAR HOUSE

## AUGUST, 2022



Website:  
<http://div8.ncr-nmra.org>  
or  
[clintonriverdivision.ncr-nmra.org](http://clintonriverdivision.ncr-nmra.org)



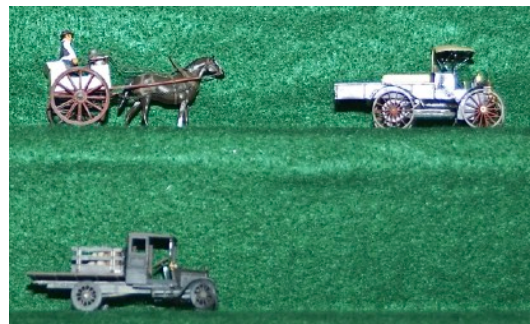
Website:  
<http://www.nmra.org/>

### SHOW & TELL - AUGUST 2022 - CARS, TRUCKS, WAGONS or Current Projects



**Greg Rich, MMR**, built this rail bus for his New Baltimore and Fair Haven Railway. His clinic, Cars-n-Trucks-n-Wagons, Oh My! explained many modeling techniques to build unique vehicles for a model railroad.

Some of the variety of 1920s vehicles **Greg** has built and modified over the years of modeling. Thanks for sharing your methods with the Division live and on Zoom.





**Ron King, MMR**, modified a 1954 "Mini-Metals" cab and scratch-built the tow bed with super-detailing.

---



**John Martin** brought two highway "scrapers", also called "Michigan End Loaders." One is ready to be shipped on a KCS flatcar.

---



**John Racey** displayed an S Scale 1956 Ford cab-over car hauler with '54 Mercury, '57 Ford, '54 Ford and '56 Chevy Nomad.

---



**Saul Kaubfeld** brought a fleet of 60' high cube boxcars. They are 1970s era Tyco conversions, which he detailed.

---



**Mark Mincek** has been super-detailing '48 Ford Super Deluxe & a '41 Plymouth with chrome, painted wheels, correct interiors, weather stripping and driver for the convertible.

---



**Ken Scherer** scratch-built these wagons, a gravity wagon, a baggage cart and two hay wagons.

---

**George Anderson** (via Zoom) displayed a circus wagon (photo not available). He noted the Copper Range RR Historical and Technical Society convention is in the Hancock area September 16-18.

---



**Dave Thornton** brought his 1/43 Scale wagon (station), a '56 Pontiac.

---



**Ken Chick, MMR**, is building a wood model of a yard office, under construction.

---



**Larry Wolohon, MMR**, displayed his 1/43 Scale Chrysler Town & Country woodie convertible.

---



**John Jackson** - about 30 years ago, scratch-built this heavy duty flat bed & stake truck with a lift gate

---



**Phil Kenyon** brought a Dodge-Chrysler 300C Haulaway with three vehicles.

---



**Terry Bossick's** current project is HOn30 micro-layout (6" X 24") inspired by Carl Arendt. It is operational.

---



**Curt Danielewicz** purchased a Rapido HO GMC "New Look" bus in Detroit Street Railway paint scheme.

---



**Steve Weber** (via Zoom) built AL's Shipping & Storage from a Bar Mills "Oakleaf Shipping & Storage" kit. Steve added interior scene, nano-lighting with functioning goose-neck lights (Steve Weber photo.)



**George Van Duyne** receives his Achievement Program Award for "Model Railroad Engineer - Electrical" from Achievement Program Coordinator **Ken Chick, MMR**. Congratulations, **George**. Readers, you probably have modeling that qualifies for Achievement Program Certificates. Contact **Ken Chick, MMR**, at [kdchick@wowway.com](mailto:kdchick@wowway.com) for details.

---

## BUSINESS MEETING ITEMS & ANNOUNCEMENTS

---

- **July Car House** approved as written.
- **July Treasurer's report:** \$4,569.70 on hand. \$20 income - user fees, no expenses. Approved.
- **Master Model Railroaders** in attendance at the August meeting: **Larry Wolohon, Greg Rich and Ron King**.
- **New Clinton River Division name tags** are here. Order yours at the next meeting at no cost to you!
- **Operations Sessions** ("Op sessions"): **Andy Keeney** in Lansing and **Operations Road Show** in Saline have invited Clinton River Division members to participate in sessions at mutually agreed times, possibly in September or October. Andy needs 6-8 operators and prefers a Saturday date; Road Show needs 8-10 operators and prefers Sunday. *We need firm commitments from our members to schedule with the hosts. Thank you for signing up at the next Division meeting*

- **Door monitor** at the church for the September meeting is **Terry Cummins**. October is **Larry Dickinson**, November is **Steve Weber**. Thanks for volunteering. Please consider volunteering for future months. For security reasons, the church door must remain locked at all times. Thanks for helping out the Division and keeping everyone safe.
- **OPEN HOUSE AND SALE** - All railroad equipment of the late **Jim Clements** is for sale, Sunday August 28, 1-4pm, 504 Plymouth Ct., Rochester Hills, 48307.
- **The Mentor/Mentee file (give help/receive help)** is at [https://drive.google.com/file/d/195MkOSzCIIO4pfcGtM4Lcnl-slExBw2\\_/view?usp=sharing](https://drive.google.com/file/d/195MkOSzCIIO4pfcGtM4Lcnl-slExBw2_/view?usp=sharing)
- The private **Clinton River Division Facebook group** at <https://www.facebook.com/groups/288929175921717/>

## SCHEDULES

For more information, contact the organization listed. We do not have further details. Obviously, schedules are subject to change. Check with the venue before the event.

**AUGUST 28 - The Late Jim Clements' Open House & Sale, 1-4 pm,**  
504 Plymouth Ct., Rochester Hills, MI

**September 11 - Shelby Township Model Train Show,** Shelby Twp Activities Center  
see flyer in this issue

**September 15 - Clinton River Division Monthly Meeting, 7:00 pm**  
at Troy Christian Chapel

**September 24 & 25 - Blissfield Model Railroad Club Open House**  
109 E. Adrian St., Blissfield, MI 49228

**October 1 - Gratiot Valley Model Railroad Club Show,** Elite Sports Arena,  
49771 Oakland Dr., Shelby Township

**October 1 - The Great Berea Train Show,** Cuyahoga Co. Fairgrounds Events  
Center, Middleburg, Hts., OH (Cleveland Area)

**October 20 - Clinton River Division Monthly Meeting, 7:00 pm**  
at Troy Christian Chapel

**October 28 & 29 - Model Railroad Convention - Kalamazoo/Battle Creek Area**  
see flyer in this issue

### **CLINIC: GREG RICH, MMR, - CARS-n-TRUCKS-n-WAGONS, OH MY!**

“Part of the enjoyment in model railroading is building the ‘stage’ on which our tiny world is set. This includes the backdrop, scenery, structures and myriad details. Among these modeled details is the *other* transportation systems of “the day,” horse drawn wagons, cars and trucks, etc. These “supporting actors” help set a specific timeframe for our models and at the same time, add both interest and enjoyment for those running (ed: and observing) the trains.

A major part of modeling is **INSPIRATION**. If you can see it, most likely, with a little patience, you can model it, or at least “give it a try.”

**SEPTEMBER 2022 MEETING**  
**Live at Troy Christian Chapel and on ZOOM**  
**Thursday, September 15, 2022, 7:00 pm**

**Show and Tell Topic:**  
**BOXCARS or Current Projects**

**Clinic Topic:**  
**Larry Wolohon, MMR - BOXCARS**

*We will send you notice of the meeting and the ZOOM code a few days before the meeting. Please look in your SPAM folder if you don't receive it timely. Don't ask, I have no idea why some providers think I am SPAM!*

**CLINTON RIVER DIVISION 8 BOARD OF DIRECTORS**

**Superintendent:** Curt Danielewicz - [curt48044@gmail.com](mailto:curt48044@gmail.com)  
**Treasurer:** Dan Shilt - [ddshilt@aol.com](mailto:ddshilt@aol.com)  
**Secretary:** Kent Aughe - [chappie81@wowway.com](mailto:chappie81@wowway.com)  
**Directors:** Mark Mincek - [themotive@att.net](mailto:themotive@att.net)  
Phil Doolittle - [doolittlep@comcast.net](mailto:doolittlep@comcast.net)

**Car House Editor:** Kent Aughe

**Car House Proof-reader:** Barbara Aughe

***NEXT MEETING - Live and ZOOM***  
**September 15, 2022 - Thursday at 7:00 pm**  
**TROY CHRISTIAN CHAPEL**  
**Second Floor Meeting Room (use parking lot door and stairway just inside the door. There is also an elevator in the lobby if you prefer)**  
**400 E. LONG LAKE ROAD, TROY, MI**  
**See you there! Same Time, Same Place, Third Thursday, Every Month**

**Thanks for your membership, support and participation in person  
at Troy Christian Chapel or in the Zoom meetings.**

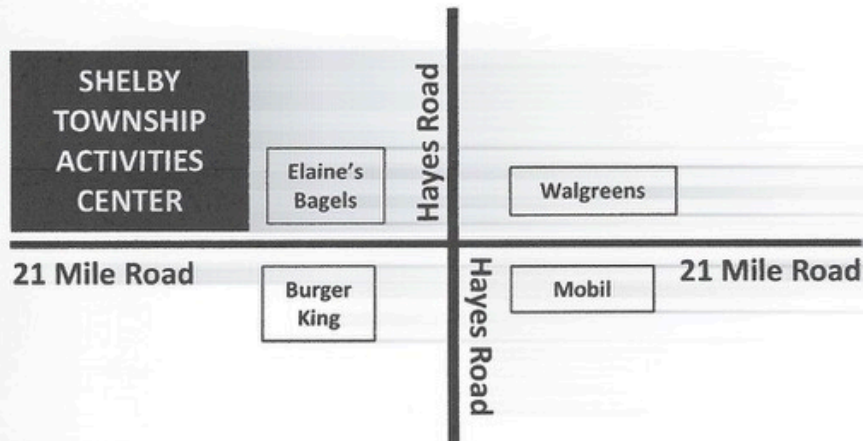
# MODEL TRAIN SHOW

Sunday – Sept 11, 2022 – 10am



## Shelby Township Activities Center

14975 21 Mile Rd, Shelby Township, MI 48315



ADMISSION – \$5 VENDOR TABLES – \$25 ea.

Age 11 & Under SET-UP: Sunday, Sept 11

Free with Adult 7:00 am to 10:00 am

INFO: Call Mike @ 586-271-6024

EMAIL: [mikel.j@comcast.net](mailto:mikel.j@comcast.net)

## **OCTOBER 2022 MODEL RAILROAD CONVENTION – KALAMAZOO/BATTLE CREEK, MI**

The NMRA NCR Division 9 is hosting a Model Railroad Convention over two days (OCT 28/29, 2022) which will include layout tours, clinics, a special dinner and hopefully some operating session, all of this is over a Friday afternoon through Saturday time frame. The location is in the Kalamazoo and Battle Creek area of Michigan. The Kalamazoo Model Railroad Club will be hosting their annual fall train show and sale on the Sunday (Oct 30) of that weekend if you would like to attend that also. A weekend of railroading activities. Hotel selection in the area is on your own.

A Registration location on Friday will be announced after you register, registration on Saturday will be at the location where the clinics are being held from 7:30am to 12:30pm. **The Saturday registration location and the clinics will be at a facility called The River Church, which located at 517 Walbridge, in downtown Kalamazoo. The building is northeast of the Kalamazoo Amtrak Station, and their parking lot backs up to the train tracks.**

**Oct 28, Friday afternoon**, there will be layout open houses from 3:30pm to 6:00pm. You must have a paid registration and convention badge to see the layouts. **Registration for the convention will occur at the first layout on the tour.**

**Oct 28, Friday evening**, there will be a gathering of model railroaders for dinner at Clara’s Restaurant in downtown Battle Creek starting at 6:30pm. You need to reserve a spot for this event and dinner will be ordered off the menu with individual bills. Who knows what might be scheduled for education, entertainment, and fun!

**Oct 29, Saturday**, at the River Church, registration from 7:30am to 8:30am and time to visit with other model railroaders. **Free refreshments and some breakfast foods during registration and the clinics!**

**Oct 29, Saturday**, 8:30am, 9:45am and 11am. 12 clinics will be presented between four different rooms.

**Oct 29, Saturday**, Lunch on your own. Then more model railroad layout viewing 1:00pm to 5:00pm, operating sessions on Saturday evening. 11 layouts will be open for viewing on Saturday afternoon.

More information will all be posted on The NMRA NCR Division 9 website, including information about paying with credit cards for registration and the Friday registration site. The Division 9 website address is <http://ncr-div9.com/conventionForm.php>

**Registrations at this time can be check or money order made out to NMRA, NCR, Division 9. Cut off the registration form below and mail it to Division 9 Superintendent and Convention Registrar Garry Johnson, 371 32nd Street N, Springfield, MI 49037.**

**Registration fees are to be paid in US Dollars only: Pre-registration is \$25, the late registration fee is \$30 on or after August 31, 2022. Yup, send your money and registration in now and save some money!**

For more information or question contact Rich Mahaney at 269-214-4221 or [rcmahaney@gmail.com](mailto:rcmahaney@gmail.com).

-----REGISTRATION FORM/Cut off and send to Garry, at the address above-----

NAME \_\_\_\_\_ NMRA Number \_\_\_\_\_

ADDRESS \_\_\_\_\_ CITY \_\_\_\_\_

STATE \_\_\_\_\_ COUNTRY \_\_\_\_\_ ZIP \_\_\_\_\_

EMAIL \_\_\_\_\_ PHONE \_\_\_\_\_

**Are you interested or planning to attend the Friday, Oct 28, 2022 dinner at Clara’s in Battle Creek, the cost of dinner will be on your own. YES \_\_\_\_\_ NO \_\_\_\_\_**

**Are you interested in attending operation sessions on Friday or Saturday evening? YES \_\_\_\_\_ NO \_\_\_\_\_**

**More information will follow in the future as these get set up.**