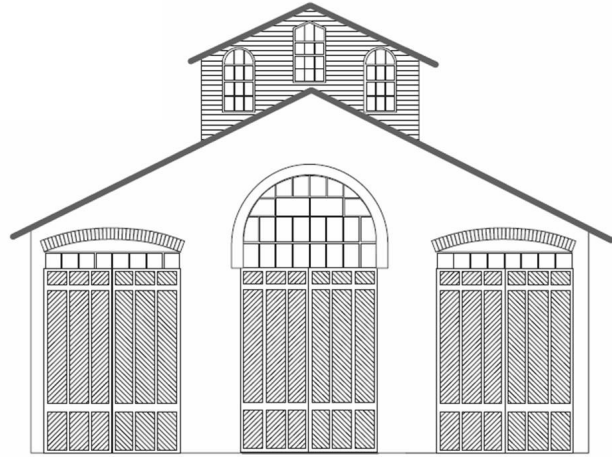


CAR HOUSE



June, 2023



Website:

[http://
www.nmra.org/](http://www.nmra.org/)



Call to Order

Meeting called to Order at 7:05

Recognition of visitors and MMRs

MMRs present Jim Zinser, Ron King, Bruce De Young, Dan Lewis

Visitor – Dana Markey (a division member from the 90's)

Presidents Page

I want to start off with a PSA regarding our need for a volunteer for the upcoming Detroit National Convention. We need somebody that would be willing to be set up the Division 8 volunteers that would help out during the convention. Our division will help man the registration desk and cover other tasks that are part of any convention. We just need somebody that is willing to help coordinate that activity within our division. Please let me know if you're interested.

I also have a couple of links to share with you this month that tie back to my recently completed current project that I brought in for our May meeting.

First, some very good news! You don't have to go to prison if you want to make your own license plates!! There is an easier way. If you follow the link below, you'll find a great license plate maker program. Just pick your state, type in your custom license plate number and desired available year, and you can print your own. To get the right size, I copy the result into a Powerpoint file and make the adjustments in Powerpoint. For reference, in 1956, all states agreed on a single license plate size of 12" x 6". Prior to that, license plate sizes varied by state. Do your research!!! I used these on the vehicles that were on my gas station diorama that I brought for show and tell this month.

<http://www.acme.com/licensemaker/licensemaker.cgi>

As many of you probably already know, I'm a details fanatic, so I'm including a second link that you might find useful. It's a source for the very fine tubing that is used for hypodermic needles. It comes in a variety of diameters and lengths and can be used in your own super-detailing projects. I used this for the business end of my tow truck to represent the adjustable linkage that raises and lowers the "hook". Check this link out the next time you need some very small tubing for your detailing project. It is very easy to cut with a Dremel cut off wheel. However, don't try to solder it. Stainless steel is not solder friendly.

<https://componentsupplycompany.com/hypodermictubing-size-chart.php>

Hope you enjoy,
Mark

Hope you enjoy,
Mark

Clinic

Bruce De Young: Blending Background Scenery and the Foreground.

The full presentation with extensive notes is available on the NMRA website on the EduTrain pages. Also available is examples of Bruce's work on his YouTube channel – JerseyHighlandsBruce.

A couple points from the presentation:

- A little distance between the backdrop and foreground items like building give a lot of visual improvement.
- Blend some scenery(trees, brush,..) into the last 2 inches in front of the backdrop.
- Avoid a hard straight line at the base of the backdrop.

BUSINESS MEETING ITEMS

All Members – Please check your NMRA membership cards and renew today. Insurance regulations require meeting participants be NMRA members {after three meetings}. Please stay current. You can renew at **NMRA.org**. There are so many benefits of membership, including discounts at major online retailers, information available on the website. Membership with digital delivery of the NMRA magazine, \$92 with US mail delivery of the magazine.

May Car House approved.

June Treasurer's report Dan Shilt: \$4,225.25 on hand. User fees of \$60 were collected. A check for \$25 for gift certificates was issued. Approved.

Layout tour Plans – Dan Lewis: The next Division 8 are scheduled for Sunday, September 10, 2023 from 1-4. Flier with more information is under announcements.

Operating Session Plans – Curt Danielewicz: A sign up sheet will be available at the next meeting for a number of fall operating sessions.

Door monitor at the church for the July meeting is **Terry Cummins** and John Jackson has volunteered for August. Thanks for volunteering. Please consider volunteering for future months. For security reasons, the church door must remain locked at all times. Thanks for helping out the Division and keeping everyone safe.

New Business

Revised train Show Plan.

We are looking for volunteers to plan and build the layout and to attend the shows. Starting with train shows in the fall 2023, we will starting building a small layout for attendees to see what we do. Accompanying the build we will present a series of lunch time clinics. In the past we have noticed a lot of the attendees looking for guidance on building their railroad. Once the layout is completed, we would raffle off the layout at one of the larger shows, the proceeds to go to funding the next build.

Migration to Discord

The NMRA migration to Discord is still underway, but some people are struggling. Mark will put together a presentation for members to take home and try to make progress.

Announcements

Please notify Irv Chmielewski (NCRDIV8SECRETARY@gmail.com) if you would like to have an announcement posted in Car House. Provide written details

NMRA-North Central Region Convention will be held in Fort Wayne in October. If anyone is interested in giving a clinic at the convention, contact Jim Macino at JIM@ICMGT.Com

The 2025 NMRA National Convention will be held in Novi, second week in July! More information is coming, but get your layouts in shape for open houses, prepare possible clinics and be ready to volunteer! Clinics for the 2025 Convention are being coordinated by Andy Keeney.

Hints and Tips

If you buy something at a train show, do not trust the package even if marked as “new”.

If buying an engine try it out before buying.

Show and Tell

Mark Mincek

Scratch Built Gas Station

I brought in my latest completed current project. It is a Mobil Oil Station. It is fully detailed inside and out including Willard battery racks and Anco wiper blade displays, and a hand carved tire pump. All are modeled from the prototype. The bathroom has paper towels coming out of the dispenser and this sink needs a serious cleaning! All of the vehicles are super detailed, including side view mirrors and license plates. The back end of the tow truck is entirely scratch built and was based off the mechanism from typical 1950's tow truck pictures.



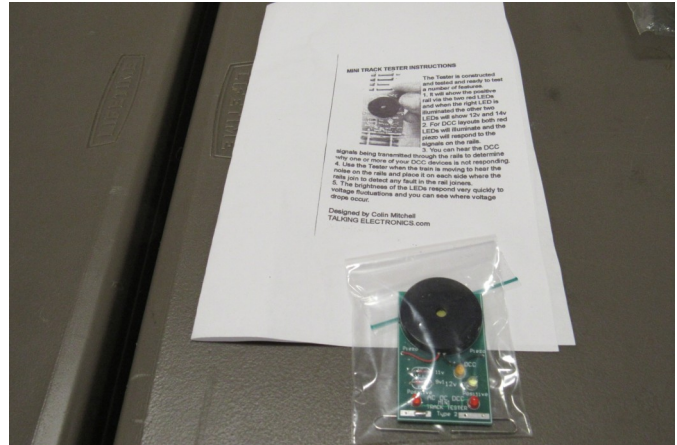
Tim Fisher

Painted Brass Santa Fe steam Engine

Model key brass 3751 Santa Fe Class 4-8-4.
Spent 20 hours cleaning and prepping. Spray painted using a spray booth.



Phil Kenyon
Track tester
N scale digital track tester by Holland.



Dave Thornton
Current Project
O scale 65 foot B&O Mill Gondola with I beam load.



Ken Scherer
Trees
Home made and store bought trees. Spin trees were made using using a drill to twist the wire Super Trees were spray painted and then highlighted.



Dan Lewis

Freight Cars

One stock car and one gondola, both scratch built except for trucks.



Chris Dobies

Laser Art House Kit (N scale)

Completed first kit in N scale. Off to a great start. Thanks for encouragement



Bruce De Young

Suydam house kit

61 year old kit with card stock walls.



Warren Yohe

Profile Board backdrop

Ground foam applied to profile board for a backdrop. Extra course Woodland Scenics ground foam glued on painted foam-board to represent hills or mountains



Jim Zinser

Old scenery

A chunk of scenery from an old layout saved to maybe used on new layout. Made by using "oatmeal scenery" aka "ground goop" applied over Styrofoam. Foliage mostly mashed down and broken down while in storage.

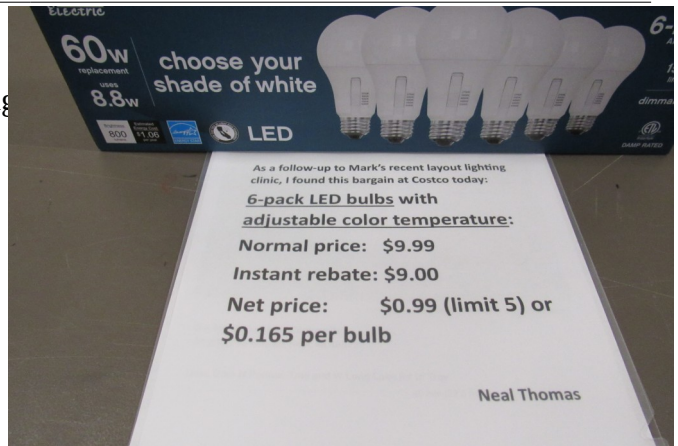


Neal Thomas

Follow up on Layout Lighting

As a follow up to Mark's recent layout lighting clinic, found this bargain at Costco.

6 pack LED with adjustable color temperature.



The Mentor/Mentee file (give help/receive help) is

at https://drive.google.com/file/d/195MkOSzClIO4pfcGtM4LcnI-slExBw2_/view?usp=sharing

The private **Clinton River Division Facebook group** is at

<https://www.facebook.com/groups/288929175921717/>

SCHEDULES

For more information, contact the organization listed. We do not have further details. Obviously, schedules are subject to change. Check with the venue before the event.

July 20 - Clinton River Division Monthly Meeting, 7:00 pm

at Troy Christian Chapel

August 5-6 Huckleberry Railroad Railfan Weekend in Genesee County.

1st Saturday of the month Operations at Railroad Park Royal Oak

Aug 20-26 - NMRA National convention - Texas Express See NMRA website.

Sept, 10 - Division Layout Tours

Oct 19-22 - NMRA - North Central Region at Fort Wayne.

National Convention 2025 Regional Contacts

A lot of work needs to be completed before the Nation Convention. The region has established a number of work groups that can use additional volunteers.

The following are the persons that you can contact to assist with the convention.

Chairman- Scott Kremer

Co-Chair and Hotel Coordinator - Bill Neale (Note the primary hotel responsibility is through the NMRA Meeting and Trade Show personnel)

Treasurer - Steve Harsh	Webmaster - Marshall Stull
Non-Rail - Kitty Kremer	LDSIG - Ron Burkhardt
OPSIG - Eric Smith	RPM Conference - Mike Skibbe
PR/Marketing - Jim Zinser, Barry Hensel	Layout Visit - Brook and Jay Qualmann
Op Sessions - Ken Chick	Prototype Tours - Bruce Wolfe
Clinics - Andy Keeney	Volunteers - Div 6 - Bill McMillan

Yard Sale - Greg Rich	IT coordinator - Jeff Higgins
------------------------------	--------------------------------------

Still looking for a number of additional people. If you would like to volunteer to fill the following spots please let Mark know.

Bus Coordinator	Contest Coordinator
Volunteers - Div 8	Merchandise - basically shirts

**July 2023 Meeting
Live at Troy Christian Chapel and on Zoom
Thursday, July 20, 2023, 7:00 pm**

**Clinic: Making a Backdrop
by Norr Logan**

**Show & Tell:
Backdrop or Scenery related.**

**Join us after the meeting for snacks and conversation at Leo's Coney Island,
Walton & Livernois**

We will send you notice of the meeting and the ZOOM code a few days before the meeting. Please look in your spam folder if you do not receive it timely. Don't ask, I have no idea why some providers think we are spam.

Clinton River Division Layout Open House

Sunday, September 10, 2023
1-4 PM

Warren Yohe 2603 Windsor Dr., Troy, MI 48085



My Mineral Range Railroad is an HO standard gauge prototype-based model of the Duluth South Shore and Atlantic RR extension that once served the "Copper Country" on Michigan's Keweenaw Peninsula ca. 1900. The railroad is 26' x 23', featuring a walk around point-to-point design with traffic from connections in Houghton staging to the terminus in Calumet. It has scratch-built and kit-bashed structures. Scenery is 95% complete but an expansion is planned.

Gale Saxton 3801 Anvil Dr., Troy, MI 48083

My Green River Subdivision of the Boston & Maine is a fictional division running north from the Maine coast through the mountains toward Berlin, New Hampshire. The railroad is set in the late 1950's and is still running steam along with first generation diesel.

The emphasis is on capturing the New England scenery and providing a stage setting for my operations sessions. The railroad is designed for operations with 8 to 10 persons.

