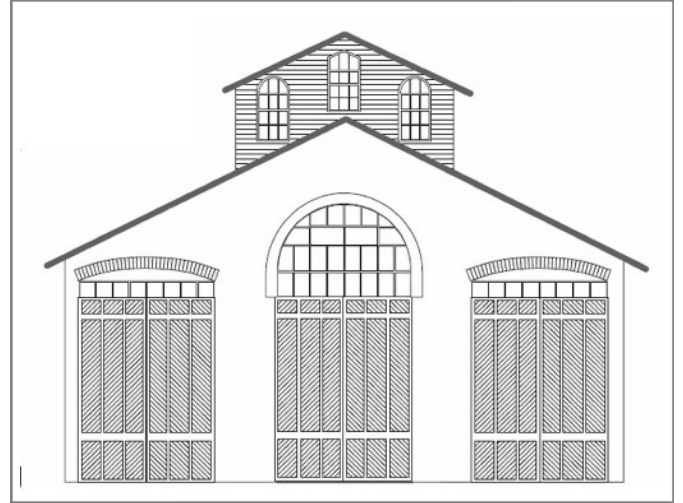


# CAR HOUSE

## MAY, 2022



Website:  
<http://div8.ncr-nmra.org>  
or  
[clintonriverdivision.ncr-nmra.org](http://clintonriverdivision.ncr-nmra.org)



Website:  
<http://www.nmra.org/>

## CLINTON RIVER DIVISION LAYOUT TOUR - May 1, 2022

(Photos by the editor, unless otherwise noted)



**Robert Cabrera** built a mesa with a farm on top. The whole mountain is removable to access the tracks beneath it.



**Robert** models the US Southwest and Northern Mexico. The photo at the left shows a dry wash, typical of the area.

**Rad Jones** models the MIO System (Move It On), via the New York Central. The first photo shows a NYC-led troop train speeding past a baseball game, the players oblivious to it all.



**Rad's** MIO System also moves civilian passengers. At twilight, travelers await the evening train to arrive.



---

## MAY SUPERINTENDENT'S COLUMN

Greetings to all the Clinton River Division members from the superintendent. I hope this May newsletter finds you well. If you could not make it to last week's convention in Indianapolis, you missed one of the best conventions that I've had an opportunity to attend, as I would rank it up there close to National convention level. Kudos to the many volunteers that put in a lot of effort to pull this one off. The clinics offered by NMRA members as well as the RPM group were top notch, operating sessions were plentiful with great layouts and hosts. I'm quite certain that the layout tours and prototype tours were superb as well. I did not have an opportunity to indulge in the latter two due to signing up for so many operating sessions, so I could finally start documenting time toward my dispatcher AP award. I'm sure that Kent will provide many layout tour photos in the newsletter, so I'll definitely check them out to see what I missed. One last thing about the convention was seeing plenty of familiar faces at the convention and having the opportunity to catch up in person with many old friends, along with making some new friends through our shared activities. Trains, awards, displays and shows are all great, but the icing on the cake is being able to share it with friends near and far. Please make it a point to come back out to the division meeting in person; you won't regret it.

Best regards, Curt, CRD superintendent

## **INDY JUNCTION 2022 Convention, May 18-22, 2022**

Three Regions; Train Show; Swap Meet; Lots of Clinics; Layout Tours Galore. Five days of railroading and fun. Your editor is not reporting on the whole convention, but making observations from activities he attended. (Selective compression!)

Clinics I attended ranged from “Introduction to Static Grass” (Mike Hauk), two clinics by Bob Frankrone, “Love Those Loads” and “15 Easy Steps to Make a Scene,” “Using Design Elements” to design a layout based on the 5 railroads in Michigan City, Indiana (Seth Lakin), “Setting the Scene,” by our friend Ron King, MMR, to Stephen Priest describing the restoration of a 1:1 scale ATSF SD-45-2, and concluding with “Modeling Modern Urban Transit Systems” (John Gardiner), the fastest paced clinic I have ever attended. Great job by all the presenters.

Spending money at the Train Show was quite easy, even Barbara approved! If you are looking to light and animate your railroad, check out [dwarvin.com](http://dwarvin.com) - it is lighting without wires, also crossing and block signals.

Following are photos of selected home layouts we visited across Central Indiana during the convention. Too bad we don't have room for the more than 500 photos! If you attended the convention, you have seen the wonderful workmanship. If not, please consider attending the next convention. I hope you enjoy seeing these great layouts.  
Kent, Car House Editor



) \_\_\_\_\_  
**Paul Surburg** - Pennsylvania Railroad is fully signaled with PRR position lights. Here a passenger train approaches a signal bridge on a long elevated portion of the layout over a yard and industrial area.



**Paul** models an elevated commuter line fashioned after the NY City subway system with shielded third rail.

**Bob Talbot's** L&N Laurel Division models Cincinnati to Dante, VA. Industrial switching dominates urban areas and coal is king in the mountains. This scene is a unique modeling idea, dropping a culvert through the fascia.



**Jack Simpson** models the Monon from Lafayette to Bloomington during the 1950s & 60s. A Monon passenger consist of red and white F-3s await assignment as the black and gold F-3s leave the yard with a freight. **Ron King, MMR**, built this portion of the layout for **Jack**.



**Bob Case's** Baltimore & Ohio is set in 1948. Typical mountain barn with a commercial, a Baldwin Shark awaiting a highball, and weekend fun in a small town in Appalachia.





**Bob Babcock's** Seaboard Air Line railroad is set in Florida in the 1960s. From the stub-end passenger terminal in Tampa, to the orange groves of Central Florida, **Bob** has captured the diverse nature of the Sunshine State. Bob uses shelf hangers for his benchwork, storage and work areas.



---

**Justin Grayson** has built an industrial switching layout based on Norfolk Southern. The layout resides in Justin's garage with room to park the car.



---

**The Naptown and White River Model Railroad Club** constructed a large Bethlehem Steel plant at the entrance to the layout space.



Iron Ore hoppers are loaded at a Wisconsin mine on **Jim Mumms'** CNW Christie Division layout. The ore will be transferred to Great Lakes' freighters for transport to the steel mills in Detroit and Gary.



**Pedro Spicer** models Central Indiana in N scale. He utilizes Indiana Railroad and CSX power. The tall crane was scratch-built by Pedro, as is the large construction crane building a skyscraper in the background.



**John Dick's** Milwaukee Road Beer Line is a switching layout set in the 1960s.



**Jerold & Tanya Burdick's** Travis & Sons Lumber Company, inspired by the Cass Scenic Railroad and has a heavy dose of C&O steam, and features winter scenery.



**Dave Mashino's** Wildcat Valley Railroad, 1920s & 30s Eastern mountain road features scratch-built signals, some semaphores, controlled by JMRI, and 260' of single track mainline.

**Matt Hewitt's** Shadowtown Ridge Northern is 800 square feet, with spectacular West Virginia scenery, with Matt's incredible eye for detail. The railroad was the cover story in Model Railroader in 2010. Lift off the green building; the basement sports an O scale layout!.



**Richard Seymour's** CNO&TP layout depicts the "Rathole Division" of Norfolk Southern from Cincinnati to Chattanooga. First photo is the Ohio River crossing, with coal barge ready to unload. The second photo is one of the abandoned tunnels after the "Rathole" had been daylighted in 1963.



**Richard McPherson's** Great Northern runs from Great Falls with a branch line to Butte and Billings, Montana, and includes a highly detailed logging branch.



**Richard Harrison** models the Lehigh & Hudson River RR, including trains, animation, and sound effects controlled by computers on a DC layout. Observe the details *and* the wiring.





## NMRA Announces Membership Fee Adjustment

With renewals and new memberships, the yearly fee is \$68, with the digital delivery of the NMRA Magazine. The fee with the print edition is \$82. All members will continue to receive print editions of the magazine until their next renewal. The April and May 2022 digital editions are available and easy to read. You must sign up for the digital edition. See the [nmra.org](http://nmra.org) website for instructions.

---

- **“Door Monitors” volunteers:** *Volunteers for futures meetings needed!* It is an easy job: time requirement is 6:30 pm to 7:05 pm to admit members and guests as church doors are to remain locked at all times. This will be a continuing need. If we can rotate the assignments, it will be an easy job once in a while. Please volunteer for June 16 and/or July 21. Contact **Kent or Curt**.
  - **Dave Thornton** will be coordinating the Clinics for the Division. If you have an idea for a clinic, or want to take a shot at creating one, contact Dave at [dthorn5552@aol.com](mailto:dthorn5552@aol.com)
  - **A Welcoming Committee** is being organized to assist visitors and new members enjoy our meetings and activities. **Larry Wolohon, MMR, and Ken Scherer** are heading up the committee. Everyone has a role in welcoming visitors. Be a greeter!
  - **New Clinton River Division name tags** are here. You can order yours at any meeting (at no cost to you!)
  - **WE WANT YOUR PREFERENCES** - If you haven't completed questionnaires about layout tours and operating sessions, please go to <https://forms.gle/674ZbeZyXzaicvg39>. To complete the questionnaire about clinics, go to <https://forms.gle/nHHAnSxa9WN9bPQH6>
  - **The Mentor/Mentee file (give help/receive help)** is at [https://drive.google.com/file/d/195MkOSzCIIO4pfcGtM4Lcni-slExBw2\\_/view?usp=sharing](https://drive.google.com/file/d/195MkOSzCIIO4pfcGtM4Lcni-slExBw2_/view?usp=sharing)
  - The private **Clinton River Division Facebook group** at <https://www.facebook.com/groups/288929175921717/>
- 

A pair of interesting railroad signals along the old Nickel Plate and Pennsy lines in Kokomo, Indiana (editor's home town), photo by **Rich Mahaney** 5/22/2022. The former Kokomo Lumber Company is on the left.



**JUNE 2022 MEETING**  
**Live at Troy Christian Chapel and on ZOOM**  
**Thursday, June 16, 2022, 7:00 pm**

**Show and Tell Topic:**  
**TRACTION MODELS and MEMORABILIA or Current Projects**

**Clinic Topic:**  
**“INTRO TO TRACTION MODELING” by Fred Cosgrove**

*We will send you notice of the meeting and the ZOOM code a few days before the meeting. Please look in your SPAM folder if you don't receive it timely. Don't ask, I have no idea why some providers think I am SPAM!*

**CLINTON RIVER DIVISION 8 BOARD OF DIRECTORS**

**Superintendent:** Curt Danielewicz - curt48044@gmail.com  
**Treasurer:** Dan Shilt - ddshilt@aol.com  
**Secretary:** Kent Aughe - chappie81@wowway.com  
**Directors:** Mark Mincek - themotive@att.net  
Phil Doolittle - doolittlep@comcast.net

**Car House Editor:** Kent Aughe

**Car House Proof-reader:** Barbara Aughe

***NEXT MEETING - Live and ZOOM***  
**June 16, 2022 - Thursday at 7:00 pm**  
**TROY CHRISTIAN CHAPEL**  
**Second Floor Meeting Room (use parking lot door and stairway just inside the door. There is also an elevator in the lobby if you prefer)**  
**400 E. LONG LAKE ROAD, TROY, MI**  
**See you there! Same Time, Same Place, Third Thursday, .Every Month**

**Thanks for your membership, support and participation in person  
at Troy Christian Chapel or in the Zoom meetings.**