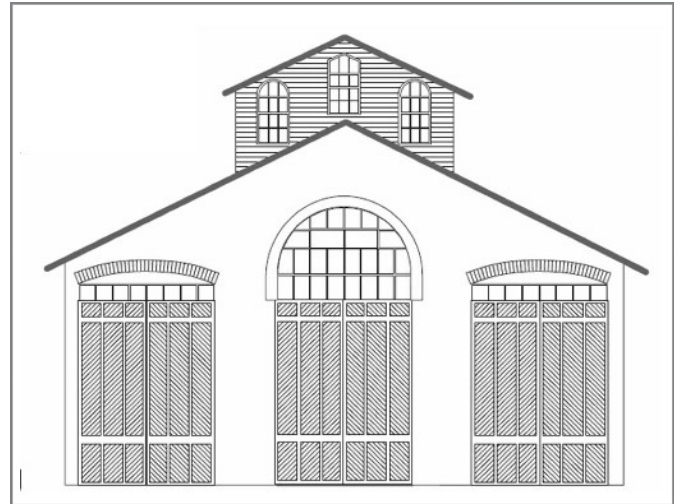


CAR HOUSE

APRIL, 2023



Website:
<http://div8.ncr-nmra.org>
or
clintonriverdivision.ncr-nmra.org



Website:
<http://www.nmra.org/>

CLINIC: HOW TO LIGHT YOUR LAYOUT ROOM

by Mark Mincek

Mark presented a very informative clinic, detailing different lighting types with understandable explanations of technical data about light spacing, lighting color temperature (measured on the Kelvin scale), color rendering index (CRI), and suggestions on purchase of lighting. Mark's clinic slides are posted on the Division website for your information and use. clintonriverdivision.ncr-nmra.org

THE PRESIDENT'S PAGE

In addition to my absolute love of model railroading, I'm also a music fan, and one of the genres of music that I most enjoy is country music. I especially like some of the older stuff. Last week, I watched an interview with Vince Gill, who, for those not familiar, started off as a very modest behind-the-scenes musician that played on everybody else's records. He has since become one of the great icons of country music. In the interview, he talked about some advice he received early in his career from one of his mentors. He was told "Vince, you never want to be the best member of the band, because you'll never learn anything."

That advice applies to us as model railroaders. There is so much to learn in this hobby and there is a wealth of great modelers out there doing some really fantastic work. The good news is that we model railroaders tend to be a helpful

bunch. In the spirit of surrounding yourself with truly great modelers, I'm going to pass along a link to one of my favorite modeling forums. The name of the forum is Mike Chambers' Craftsman Corner, and it is part of a broader set of forums called the Railroad Line Forums. Below is a link that takes you directly into Mike Chambers' Craftsman Corner, as well as the broader set of forums under the Railroad Lines umbrella.

<https://railroad-line.com/node/40>

<https://railroad-line.com/node/18>

The guys on the Mike Chambers' forum are a really friendly group of highly talented modelers that have always been super helpful when I have a question about how to do something, or how they achieved such spectacular results in their modeling. This, combined with the inspiration from the many great photos of their work, can help all of us become better modelers.

Hope you enjoy,
Mark

SHOW & TELL - Models That Duplicate Prototype Colors or Current Projects



Robert Cabrera used an ITLA laser-cut building for backdrop scenery, finishing it with acrylics and pastels for weathering.

Terry Cummins built an HO small job shop (shown) and an N Scale auto service facility. Both have simulated arc & Flame welding, using LEDs.





Tim Fisher painted his Santa Fe station a light yellow to duplicate the prototype. Model paint this color is no longer available. He chose Erie Lackawanna Yellow and mixed with desert brown and white. It took him 4 trials to get a match.

John Gavasso displayed a Mantua Collectibles B & O 4-6-2 steamer painted the green of original Class P-7 Presidential Fleet.



David Katona built this D&M RS-2 from a Stewart kit over 30 years ago. He custom-mixed three colors of Floquil paint to match the dark maroon color. As he will be building 6 more units, he will need to match the color using currently available paints.

Ron King, MMR, scratch-built a loading platform for his "Little Hook" by Alexander Models he built and displayed a few months ago.



Dan Lewis, MMR, built this derrick crane from a Dimi-Trains kit.

John Martin re-painted this Caterpillar road grader and rigged it to an ATSF flatcar.



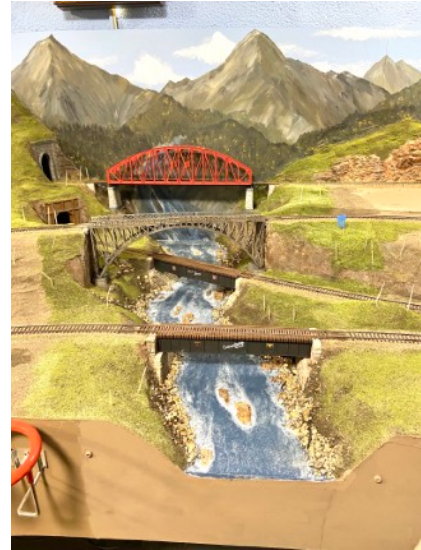
Dan Mitzel purchased this HO Milwaukee Road 50' reefer - it's an Athearn RTR beer service reefer he found at the Division 6 show.

Bill Moore painted this steam era Boston & Maine caboose to match a prototype photo. He used Floquil caboose red, then faded and weathered with diluted 2 parts caboose red and one part reefer white.



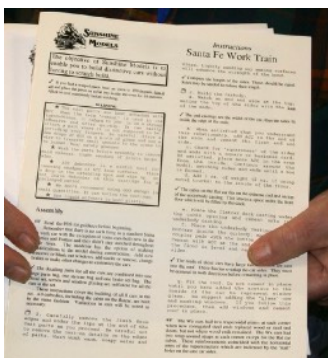
John Racey displayed this S Scale Rio Grande caboose.

Larry Dickinson poured his river using Woodland Scenics Realistic Water/Water Effects kits.



Ken Scherer's mine complex was free to a good home - it was gone by the end of the meeting! Ken also purchased a number of cars and decals on a recent trip to Grand Rapids - a train show and "Recycled Trains" hobby shop.

Bob Stelmach built a bobber caboose from cardboard and bits and pieces - wheels and trucks are from an On30 passenger car.



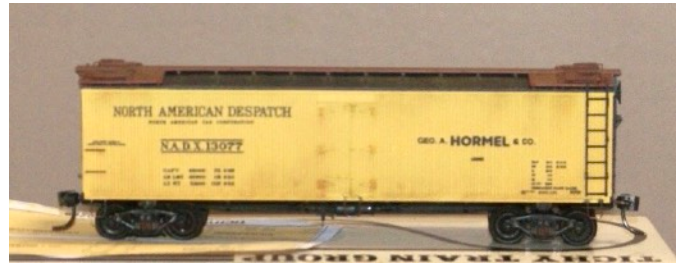
Bob Taffs recently found several Sunshine Models work train kits and is beginning to build them. Directions included. Bob's wife recently passed away - our sympathies to you, Bob.

Neal Thomas displayed one of his MP5 switch machines that does everything a Tortoise does in the size of an ice cube. He purchased it online.



Dave Thornton painted and decorated a 1970s vintage Atlas 52' gondola. The auto frames came from 2 O Scale Lionel 50' double-door boxcars.

George VanDuyne built an HO Tichy kit into a North American Despatch Hormel Meat refeed. He replaced the plastic grab irons with metal, custom blended the yellow paint to attempt to match the color swatch included with the decals.



Larry Wolohon, MMR, painted this HO GN FA-1 with Floquil paints.

Greg Rich, MMR built, painted and decaled this early PRR boxcar for the PRR Express Line service.





Nice auto rack. Unfortunately we don't have a Show & Tell form, so we cannot identify the modeler. Please claim your photo next month!

Kent Aughe has used lepro.com daylight white LED strip lights (6000 K, CRI unknown) to illuminate the lower deck of his layout. 32.8 foot strips (can be cut) are available with dimmable 24 W power supply for \$22.99 plus shipping. No photo, check it out online.

BUSINESS & NEWS

ALL MEMBERS - please check your NMRA membership cards and renew timely. Insurance regulations require meeting participants be NMRA members (after 3 meetings). Please stay current. You can renew at **NMRA.org**. There are so many benefits of membership, including discounts at major online retailers, information available at the website. Membership is \$68 with digital delivery of the NMRA Magazine, \$92 with US mail delivery of the magazine.

- **MMRs in attendance** at the April meeting: **Ron King, Dan Lewis, Greg Rich, and Larry Wolohon**
- We welcome **Chris Dobies**, who joined the NMRA and attended his first Division meeting.
- **March 2023 Car House** approved - new links for Mentor/Mentee file is listed below.
- **Dan Shilt, Treasurer**, reported \$4,229.94 on hand as of 3/31/2023. No change for February. Report approved.
- **USER FEES:** *If you have not paid your user fees, please bring yours up-to-date. See the website to submit the \$10 fee (on a calendar year basis) via PayPal. User fees support Division operating expenses such as equipment, Zoom and Constant Contact fees, stipend to the church for room use. We receive no funds from the National Model Railroad Association or the North Central Region.*
- **Paul Runyan**, long-time member of Clinton River Division and Treasurer for several years, passed away recently. The Division voted to send a memorial contribution to the NMRA Diamond Fund in Paul's name. Our sympathies to Paul's family and friends.

- **Recruitment Proposal** - Most new members come because someone invited them! So, any visitor that is not a current or former member of NMRA (at least 5 years ago) would receive a \$25 gift certificate from *Great Lakes Hobby* if they sign up for NMRA membership at the meeting. If a Clinton River Division member brings the visitor as a sponsor, they would receive a \$10 gift certificate from *Great Lakes Hobby*. This proposal will replace the rental of publicity tables at local model railroad shows and does not preclude distributing flyers at the “free” flyer tables at shows. **Proposal approved.**
- **Door monitor** at the church for May is **Terry Cummins** and for June is **Kent Aughe**. Thanks for volunteering. Please consider volunteering for future months. For security reasons, the church door must remain locked at all times. Thanks for helping out and keeping everyone safe.
- **The 2025 NMRA National Convention will be held in Novi, second week in July!** More information is coming, but get your layouts in shape for open houses, prepare possible clinics and be ready to volunteer!
- **CLINTON RIVER DIVISION LAYOUT TOUR SUNDAY MAY 21 - Dan Lewis, MMR,** coordinator. See flyer on last page of this issue.
- **Operating Sessions** - If you are interested in op sessions, please contact **Curt Danielewicz** (curt48044@gmail.com) Please consider joining an op session. Contact Curt for future dates.
- **The Mentor/Mentee file (give help/receive help)** is at docs.google.com
- The private **Clinton River Division Facebook group** at <https://www.facebook.com/groups/288929175921717/>
- **Fort Wayne Rails 2023**, the North Central Region Convention is October 19-22, 2023, at the Holiday Inn Purdue Fort Wayne. For information about all the activities of the convention and to register, go to www.div3.ncrnmra.org/fort-wayne-rails-2023

SCHEDULES

For more information, contact the organization listed. We do not have further details. Obviously, schedules are subject to change. Check with the venue before the event.

- May 6 & 7 - Blue Water Train & Swap Show**, 10-4 each day, (former Darrel's Steakhouse), 5078 Lapeer Rd., Kimball, MI 48074 (NW of Port Huron)
- May 18 - Clinton River Division Monthly Meeting, 7:00 pm**
at Troy Christian Chapel
- May 20 & 21 - Private Owner HO Model Railroad Sale**, 10-4 each day, 31630 North River Rd., Harrison Twp, MI. Contact Barry Hensel, 734-649-3056
- May 21 - Clinton River Division Layout Tour** - 1-4 pm - see flyer on last page
- May 21 - Durand Union Station 41st Annual Model Train Show**, Durand Middle School, 9550 E Lansing Rd, Durand, MI 48429

MAY 2023 MEETING
Live at Troy Christian Chapel and on ZOOM
Thursday, May 18, 2023, 7:00 pm

CLINIC: FREIGHT CARS
By Larry Wolohon, MMR

SHOW & TELL:
Gondolas and Hoppers or Current Projects

**Join us after the meeting for snacks and conversation at
Leo's Coney Island, Walton & Livernois**

*We will send you notice of the meeting and the ZOOM code a few
days before the meeting. Please look in your SPAM folder if you
don't receive it timely. Don't ask, I have no idea why some
providers think I am SPAM!*

CLINTON RIVER DIVISION 8 BOARD OF DIRECTORS

President: Mark Mincek - NCRDiv8President@gmail.com
Treasurer: Dan Shilt - NCRDiv8Finance@gmail.com
Secretary: Irv Chmielewski - NCRDiv8Secretary@gmail.com
Directors: John Jackson - NCRDiv8Director@gmail.com
Curt Danielewicz - NCRDiv8FormerPresident.com
Note new email addresses for officers. Use these addresses please.

Car House Editor: Kent Aughe

Car House Proof-reader: Barbara Aughe

NEXT MEETING - Live and ZOOM
May 18, 2023 - Thursday at 7:00 pm
TROY CHRISTIAN CHAPEL

**Second Floor Meeting Room (use parking lot door and stairway just
inside the door. There is also an elevator in the lobby if you prefer)**

400 E. LONG LAKE ROAD, TROY, MI

See you there! Same Time, Same Place, Third Thursday, Every Month

**Thanks for your membership, support and participation with the Clinton River
Division, in person at Troy Christian Chapel or in the Zoom meetings.**

Clinton River Division Layout Open House

Sunday, May 21, 2023
1-4 PM



My pike is a free-lance railroad set in a rural area somewhere "up north." The layout I would consider to be a small-to-medium room size layout. Originally it was designed to run trains, and I had never even heard about operations when I started construction. Some changes have been made to start operations at some point. It has scenery everywhere, but I do not consider it to be completed.

Irv Chimielewski 31143 Sudbury Rd., Farmington Hills, MI 48331



The Rochester & Richmond is a freelanced railroad in the Appalachians in the late steam/early diesel era. It has a double track main (130') with a single-track branch line to two coal mines. Scenery ranges from industrial towns to mountains to a harbor with a car float along with a winter scene. Scenery and track are complete.

George VanDuyne 5071 Dianna Dr., Bloomfield Hills, MI 48302