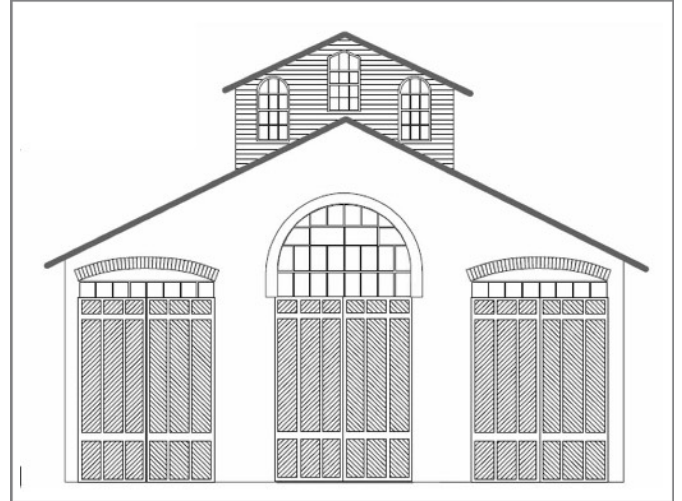


# CAR HOUSE

## MARCH, 2022



Website:  
<http://div8.ncr-nmra.org>  
or  
[clintonriverdivision.ncr-nmra.org](http://clintonriverdivision.ncr-nmra.org)



Website:  
<http://www.nmra.org/>

### SHOW & TELL - March 2022 - BoxCars and Reefers

(Photos by the editor, unless otherwise noted)



**Larry Wolohon, MMR**, (left) is presented a Certificate of Appreciation by Clinton River Division Superintendent **Curt Danielewicz** for **Larry's** nearly 30 years of service as Clinics Coordinator. Thanks, **Larry**, for your service to the Division and your fellow-modelers.

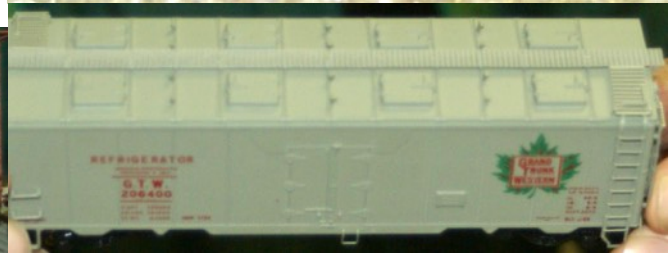


**John Gavasso** displayed a 36' reefer by MDC, detailed weathered by **Irv Schulz, MMR (decd)**. Oops, where is the front of the steamer, **John**? (My photo mistake, editor.)



**Irv Chmielewski** purchased this Gorrie & Daphetid reefer. It was "too clean," so **Irv** weathered it according to a video of the G&D. Note the weathered ice hatches.

**Phil Doolittle** built the Colorado Midland center-bunker reefer in the 1970s (LaBelle kits). The Alan Co box is a narrow gauge Rail Lines kit. The GTW end door outbox is an F&C resin kit. THE GTW 8 hatch reefer is a Truelines Trains RTR car.



**Rad Jones** brought some of his New York Central PaceMaker boxcars. NYC had 1,000 of these cars and ran them as unit trains from New York City to Buffalo from 1945-1954.

**Ron King, MMR**, modified, painted and super-detailed this Stewart Hobbies Baldwin AS-616, as Erie #1158, built by Baldwin in 1950.



**Steve Weber** purchased an Accu-Rail MR&T 41' gondola car. It came in the mail today!



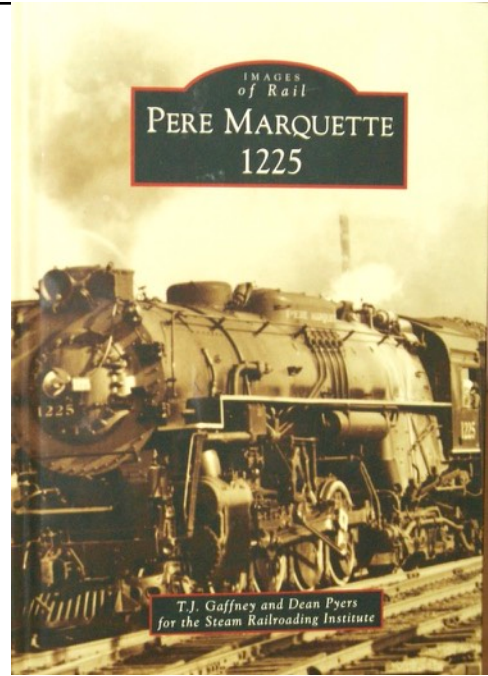
**Dan Lewis, MMR** displayed his MILW #5901 MotorCar in N Scale. It's 3-D printed shell, drive train stretched to 85' by **Marv Linke**. **Dan** painted and detailed it himself. He also displayed a book with photos of the prototype. Photo by **Dan Lewis** on his North Montana Line layout.

**Greg Rich, MMR** brought two of his models of Gorre & Daphetid rolling stock. First is a Red Ball kit gondola with oil drums and hoist. Second is a Roundhouse green G&D ventilated boxcar - tributes to John Allen's famed Gorre & Daphetid HO railroad. (Also tribute from **Irv Chmielewski** shown earlier)



**Dan Shilt** built models of the entire fleet of boxcars owned by the Huntsville & Lake of Bays RR in Northern Ontario. **Dan** will explain the history of the H&LofB in the clinic at the April meeting. Don't miss it!

**Dave Thornton** converted a Lionel Pennsy X-31 double door boxcar to O Scale (sorry, no photo). He also purchased “Images of Rail” book Pere Marquette 1225, co-authored by former Clinton River Division member **Dean Pyers**, who was present at the meeting and autographed the book for **Dave**.



**Larry Wolohon, MMR**, displayed his O Scale Mathieson Dry Ice Reefer. The prototype was built in 1946

**Jim Zinser, MMR**, displayed 3 reefers, a Hood's Milk wood express reefer, a Soo Line 50' express reefer, and a Soo Line/ Union refrigerator wood reefer.



**Mike Tranquilla** scratch-built this boxcar from styrene and details from Grandt Line.



**Curt Danielewicz** brought a 60' Detroit & Toledo Short Line boxcar by Atlas Masterline.

**George VanDuyne** continues backdrop work, "before" and "after" shots. The backdrops are painted on pieces of poster board which are then attached to the wall with rubber cement. George cautions us NEVER to toss out weight-lifting equipment - comes in handy in unexpected ways! (Photos by **George VanDuyne**)



**Mark Mincek** - PFE R70-4 50' refrigerator car. PFE built 5 of these in 1940 to try out overhead ice bunkers with 10 ice hatches. The design was popular on Canadian roads, but never caught on with PFE. The cars took longer to ice, and the shallow ice bunkers were prone to damage from the icing poles that were used to pack the ice. The cars did remain in service through the 50's. (Photos by **Mark Mincek**)





**Tim Fisher** - Santa Fe Refrigerator Despatch Iced Reefers - By 1930 there were 18,400 cars in service. The photo shows two cars of RR32 class built in 1940 with the “Ship Santa Fe all the way” map slogan. The opposite side of these cars promoted five Santa Fe name trains, Grand Canyon, Scout, Chief, Super Chief and El Capitan. Produce shipped to all parts of the

country in these cars and could be found on almost all railroads. The Santa Fe had programs to use the empty Westbound cars to carry LCL freight and [Christmas](#) mail. (Photo by **Tim Fisher**)

---

**Ken Scherer** is installing buildings on his new layout. He showed photos of the two-level layout. (Photos not available).

**Tony Britsky** displayed Trains in Miniature HO boxcar “William Penn Cigars” and a European prototype “Budweiser” reefer. (Photos not available).

---

## FROM THE SUPERINTENDENT - March 2022

---

Greetings to Clinton River Division members from the superintendent. I hope this newsletter/March meeting minutes finds you well especially if you could not attend the meeting in-person or via Zoom. Luckily this month we did not have inclement weather and with Covid cases greatly decreasing we got to see many smiling faces in person for a change. As the situation changes everyone can judge for themselves whether their comfort level dictates participation via Zoom, in-person and masked or in-person without masks. Everyone should make prudent decisions for themselves as well as others.

This meeting we transitioned our clinic chairperson's position from **Larry Wolohon** to **Dave Thornton** and I wish to congratulate **Larry** on a long, successful run. I'm thinking that **Larry** was our clinic chairperson for close to thirty years. **Dave** brings a wealth of knowledge and a long history of NMRA involvement as well to the position. He served as an NMRA board trustee for years as well as chairperson of the 2007 National Convention in Detroit. Our recent change to **Dan Lewis** as layout tour chairperson as well as the pandemic loosening its grip is also yielding fruit. We have a few layout tours

lined up in the immediate future. I'm still working on finding layout owners willing to host operating sessions, but anticipate our first one to likely be in June based on feedback so far.

In closing it will be great to welcome back our snowbirds as well as new faces that we can recruit. The more the merrier! Don't forget to sign-up to be a mentor or request to be a mentee in our file on Google Drive as well as registering your layout for tours and/or operating sessions (surveys on Google). I'll be missing the April meeting, but **Phil Doolittle** will be filling in for me. I hope to see you at the Tri-region convention at Indy Junction 2022 during May or at the June meeting. Don't forget the May meeting is annulled due to the convention.

Best regards, Curt, CRD superintendent

---

## **BUSINESS**

---

- **FEBRUARY Car House** approved.
- **Dan Shilt, Paymaster (Treasurer)**, reported \$4,374.55 on hand as of 3/7/2022. 42 members are current with user fees. *Editor: If you have not paid your user fees, please bring yours up-to-date. See the website to submit the \$10 fee via PayPal. User fees support Division operating expenses such as equipment, Zoom and Constant Contact fees, stipend to the church for room use. We receive no funds from the National Model Railroad Association or the North Central Region.*
- Because of the INDY JUNCTION 2022 convention in May, **there will be NO Clinton River Division meeting in May**. Please register for the convention and join us in Indy. See the full-page display ad in this issue of the Car House.
- **“Door Monitors” volunteers: Volunteers for futures meetings needed!** It is an easy job: time requirement is 6:30 pm to 7:05 pm to admit members and guests as church doors are to remain locked at all times. This will be a continuing need. If we can rotate the assignments, it will be an easy job once in a while. **Greg Rich, MMR** volunteered for April 21. Please volunteer for June 16 and/or July 21. Contact **Kent or Curt**.
- **The Indy Junction 2022**, May 18-22, is seeking judges for the Model Contests. Previous experience is not necessary. Training will be offered. The time commitment is May 21, at 9:00 a.m. until all entries have been evaluated. If you plan to attend the Convention and are interested in judging, please contact Steve Zapytowski at [szapytowski@neo.rr.com](mailto:szapytowski@neo.rr.com)
- **Dave Thornton** will be coordinating the Clinics for the Division. If you have an idea for a clinic, or want to take a shot at creating one, contact Dave at [dthorn5552@aol.com](mailto:dthorn5552@aol.com)
- **A Welcoming Committee** is being organized to assist visitors and new members enjoy our meetings and activities. **Larry Wolohon, MMR, and Ken Scherer** are heading up the committee. Everyone has a role in welcoming visitors. Be a greeter!

- **Scott Kremer**, chairman of the Indy Junction 2022 will join us at the April meeting to share all the excitement of the Convention. If you haven't registered, do so today! See the flyer in this issue.
- **The first Layout Tour of 2022** takes place on May 1 - Robert Cabrera and Rad Jones are hosting. See the flyer in this issue and enjoy their layouts. If you are willing to open your layout to visitors, please contact Dan Lewis, MMR, [danlewis@dkonos.org](mailto:danlewis@dkonos.org)
- **New Clinton River Division name tags** are coming. Next month you can order yours at the meeting (no cost to you!)
- **WE WANT YOUR PREFERENCES** - If you haven't completed questionnaires about layout tours and operating sessions, please go to <https://forms.gle/674ZbeZyXzaicvg39>. To complete the questionnaire about clinics, go to <https://forms.gle/nHHAnSxa9WN9bPQH6>
- **The Mentor/Mentee file (give help/receive help)** is at [https://drive.google.com/file/d/195MkOSzCII04pfcGtM4Lcni-sIExBw2\\_/view?usp=sharing](https://drive.google.com/file/d/195MkOSzCII04pfcGtM4Lcni-sIExBw2_/view?usp=sharing)
- The private **Clinton River Division Facebook group** at <https://www.facebook.com/groups/288929175921717/>

## SCHEDULES

For more information, contact the organization listed. We do not have further details. Obviously, schedules are subject to change. Check with the venue before the event.

**March 26 & 27** - The Great Train Show, Novi Suburban Collection, 10a-4p each day

**March 26 & 27** - Steve's Hobbies, 321 E Adrian, Blissfield, inventory sale.

**March 26 & 27** - Blissfield Model Railroad Club Open House, 109 E Adrian, Blissfield, MI, 10a-3p each day

**April 24** - Division 6 Sale, 19801 Farmington Rd, Livonia, 10a-3p (see flyer this issue)

**April 30 - May 1** - Port Huron Train Show, Briarwood Mall, 4350 24th Ave, Port Huron

**May 7** - Gratiot Valley Train and Toy Show, Elite Indoor Sports, 49771 Oakland Dr, Shelby Township, (off Hayes between 22 & 23 Mile Roads) [www.gvrr.org](http://www.gvrr.org)

**May 18 - 22, 2022** - Indy Junction 2022, Tri-Regional Convention, Indianapolis - register now - support the North Central Region and the NMRA (see ad in this issue)



**APRIL 2022 MEETING**  
**Live at Troy Christian Chapel and on ZOOM**  
**Thursday, April 21, 2022, 7:00 pm**

**Show and Tell Topic:**  
***Narrow Gauge or Canadian Railroad Items***  
***or Current Projects***

**Clinic Topic:**  
**History of Huntsville & Lake of Bays Railway *by Dan Shilt***

*We will send you notice of the meeting and the ZOOM code a few days before the meeting. Please look in your SPAM folder if you don't receive it timely. Don't ask, I have no idea why some providers think I am SPAM!*

**CLINTON RIVER DIVISION 8 BOARD OF DIRECTORS**

**Superintendent:** Curt Danielewicz - curt48044@gmail.com  
**Treasurer:** Dan Shilt - ddshilt@aol.com  
**Secretary:** Kent Aughe - chappie81@wowway.com  
**Directors:** Mark Mincek - themotive@att.net  
Phil Doolittle - doolittlep@comcast.net

**Car House Editor:** Kent Aughe

**Car House Proof-reader:** Barbara Aughe

***NEXT MEETING - Live and ZOOM***  
**April 21, 2022 - Thursday at 7:00 pm**  
**TROY CHRISTIAN CHAPEL**  
**Second Floor Meeting Room (use parking lot door and stairway just inside the door. There is also an elevator in the lobby if you prefer)**  
**400 E. LONG LAKE ROAD, TROY, MI**  
**See you there! Same Time, Same Place, Third Thursday, .Every Month**

**Thanks for your membership, support and participation in person  
at Troy Christian Chapel or in the Zoom meetings.**



**Indy Junction**  
**2022**  
MWR NCR MCR  
RPM Conference

Marriott East, 7202 E 21<sup>st</sup> St  
Indianapolis, IN 46219



Four Full Days  
Three Regions  
Two Day Train Show  
One Convention  
**May 18-22, 2022**

Clinics  
Layout Tours  
Ops Sessions  
Prototype Tours



[www.IndyJunction2022.org](http://www.IndyJunction2022.org)



20210506



**RPM**  
CONFERENCE



SATURDAY MAY 7, 2022 · 10:00AM - 3:00PM

# MODEL TRAIN AND TOY SHOW AND SALE

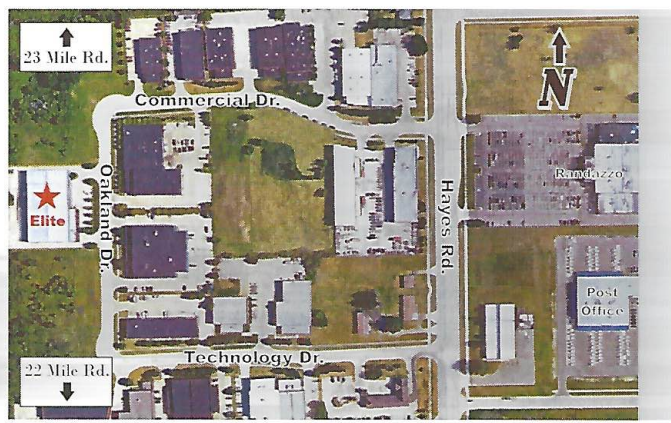
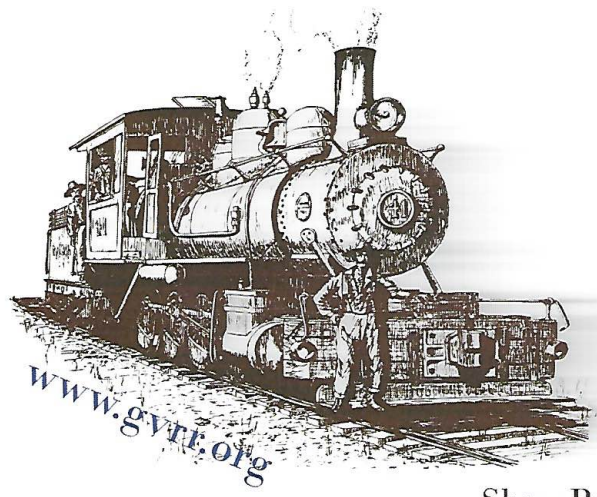
*at Elite Indoor Sports*

49771 Oakland Dr, Shelby Township, MI 48315  
Off Hayes between 22 Mile and 23 Mile

Admission  
only \$ **6**  
Children under  
12 Free!

## WE ARE BACK!

- ★ Free Parking!
- ★ Operating Layouts!
- ★ Free How-to Clinics!
- ★ Wide Open Space With No Hallways!
- ★ Free Children's Train Set Raffle!
- ★ Fun for the Entire Family!



Show Presented by

**MACOMB GRATIOT VALLEY MODEL ENGINEERS, INC.**

A registered 501(c)3 nonprofit organization and home of the

# GRATIOT VALLEY RAILROAD

For more show information & Dealer registration go to [www.gvrr.org](http://www.gvrr.org) or call 586-468-CVRR (4877)

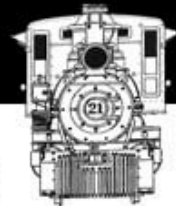
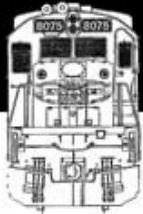
# 1st Annual MODEL RAILROAD SALE!

Hosted by Division 6

North Central Region - National Model Railroad Association

## SUNDAY – APRIL 24, 2022

### 10am - 3pm



George F. Monaghan Council #2690

## Monaghan Banquet Center

19801 Farmington Rd, Livonia, MI 48152

Between 7 Mile and 8 Mile Rds.

**72 Tables of model railroad items - ALL scales!**

**Door Prizes Awarded every 45 minutes!**

*(must be present to win)*

**Food Service by the Knights of Columbus!**



Admission –

**\$5 per person over 18 years old (spouses/children under 18 = FREE!)**

Information –

**Barry or Terry 734-649-3056 (6pm-9pm) [div6trainshow@gmail.com](mailto:div6trainshow@gmail.com)**

---

**VENDORS!** Tables are **\$25 each** Please fill out this form and mail it with payment. Must be received by Friday, April 15. Refunds given if Covid restrictions cancel show.

NAME \_\_\_\_\_ PHONE \_\_\_\_\_

ADDRESS \_\_\_\_\_ CITY/STATE \_\_\_\_\_

ZIP \_\_\_\_\_ EMAIL \_\_\_\_\_ Number of tables \_\_\_\_\_

Make check/money order to **DIVISION 6 – NCR – NMRA**

Send to- DIV 6 TRAIN SALE 43642 Lotus Dr Canton, MI 48188

SPECIAL REQUESTS – write on back of this form. Confirmation will be sent via email/mail. Set-up is 7am day of the sale only.

## Clinton River Division Layout Open House

Finally! We now have passed two years of the Covid debacle, and the good news is that we are able, once again, to open our layouts to visitors.

**SUNDAY, MAY 1, 2020**  
**1-5 PM**

**Robert Cabrera, 535 Franklin Lake Circle, Oxford, MI 48372**



Robert's layout is a diesel 70's era HO pike, modular and freelanced. The 2' wide modules are displayed in a 9 X 15 room. It captures iconic concepts from semi-desert Santa Fe and Mexico areas.

It is DC (with DCC in the offing) capable of running two trains at a time on a "inter-eight" circle loop design, including a Y reversing concept.

**COVID PROTOCOLS**  
Masks are preferred.

**Rad Jones, 2644 Long Winter Lane, Oakland, MI 48363**

Rad Jones' N-scale layout (featured in *N-Scale* magazine) captures iconic scenes from New York Central's lines in Michigan on the MIO System (Move It On). It features military training camps and Chicago and Pontiac yards along with small towns and rolling scenery.

