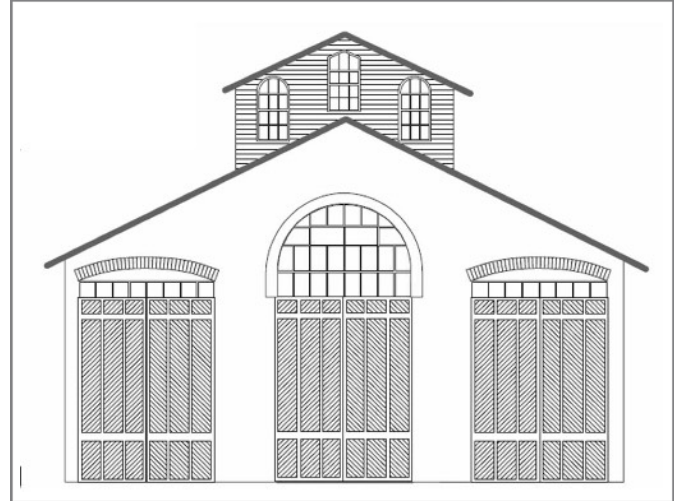


CAR HOUSE

FEBRUARY, 2023



Website:
<http://div8.ncr-nmra.org>
or
clintonriverdivision.ncr-nmra.org



Website:
<http://www.nmra.org/>

SHOW & TELL - February 2023 - Crossing Gates , Signals or Current Projects

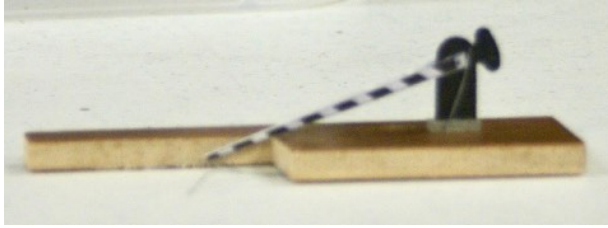
(Photos by the editor, unless otherwise noted)



Ron King, MMR - built this "little hook" and loading dock from an Alexander Scale Models kit from the 1960s. He paid \$2.95 for it. (For reference, we saw three such kits at the Ann Arbor show on Saturday, for \$20 each).

John Racey home-built a tool for bending rail, inspired by **Phil Doolittle's** S & T tool from last month. **John's** tool features oak flooring, three rollerblade bearings and a sliding center piece to accomplish the bending.





George VanDuyne built this crossing gate, the vertical stake to hold the arm horizontal has yet to be installed. The gate pivots and could be animated. George's clinic demonstrated how to build the gate from styrene, with paper printed and glued to the arms.

Phil Doolittle - his latest project is an O Scale box car kit by Intermountain.



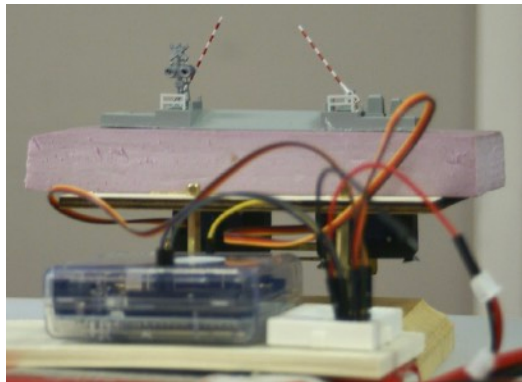
Jim Zinser, MMR - took the instructions for the S & T literally - show a "man"ually operated crossing gate. This is Travis Walter, Artistic Director of Meadowbrook Theatre introducing a performance of Agatha Christie's *Murder on the Orient Express*. (Jim's photo)

Larry Wolohon, MMR - his current project is an O Scale RS-3.



Warren Yohe - modified a Banta Model Works kit to be his Mineral Range RR calumet, MI Depot. He learned new techniques from Mr. Banta watching *NewTracksModeling Youtube show*. See info on last page of this issue.

Dave Thornton showed an O Scale crossing gate and flasher signals.



Terry Cummins built automated crossings in N Scale using an Arduino and dual servo motors. He also showed a video of the gates in operation on his home layout.

Dan Mitzel - displayed 3 crossing flashers one by Tomar, another by NJ International and a Griswold signal with rotating stop sign (If anyone has a Griswold, Dan wants to buy it!)



John Jackson purchased pre-weathered crossing markers from Tennessee Valley Customs Models (now out-of-business) and is building a Cornerstone kit, "Modern Double-Track Engine House."



Ken Scherer - this is his workbench - with programming track. Not shown are two other views of his layout - the coal sorting yard, and the through the wall branch line to the top of the helix. (Ken's photo)

Tim Fisher is building a carbon black plant. The prototype in Pampa, Texas is shown ca. 1940. His model of the main building is also shown. He also is building "burn huts", which burned natural gas, with pans of cold water above the burners, to condense the carbon black (soot). It was a dirty job! (Tim's photos)



Curt Danielewicz showed views of his layout - Milwaukee Jct., on the second level. He laid 30 feet of flex track last weekend. (No photos).

VIA ZOOM - sorry no photos

Tony Britsky - displayed a Fleischmann kit from the 1980s. The crossing signals were pressure activated by the weight of the trains - very toy-like. Tony modified them per a 1987 Model Railroader article, using Tortoise switch machines and "grad crossing pro" software.

Robert Stelmach showed his automated ground throws and views of his layout.

Paul Runyan purchased sensor-operated crossing gates from Tomar Industries.

BUSINESS

ALL MEMBERS - please check your NMRA membership cards and renew timely. Insurance regulations require meeting participants be NMRA members (after 3 meetings). Please stay current. You can renew at **NMRA.org**. There are so many benefits of membership, including discounts at major online retailers, information available at the website. Membership is \$68 with digital delivery of the NMRA Magazine, \$92 with US mail delivery of the magazine.

- **MMRs in attendance** at the February meeting: **Ron King, Larry Wolohon, Jim Zinser and Greg Rich (via Zoom)**
- We welcome **Bruce Kidder** to his first Clinton River Division meeting (via Zoom)
- **December 2022 Car House** approved.
- **Dan Shilt, Treasurer**, reported \$4,198.94 on hand as of 1/31/2023. Income for \$120 in user fees and expenses of \$300 - donation to Troy Christian Chapel for use of the meeting space. Report approved.
- **USER FEES:** *If you have not paid your user fees, please bring yours up-to-date. See the website to submit the \$10 fee (on a calendar year basis) via PayPal. User fees support Division operating expenses such as equipment, Zoom and Constant Contact fees, stipend to the church for room use. We receive no funds from the National Model Railroad Association or the North Central Region.*
- **Door monitor** at the church for March is **Terry Cummins** and for April **George VanDuyne**. Thanks for volunteering. Please consider volunteering for future months. For security reasons, the church door must remain locked at all times. Thanks for helping out the Division and keeping everyone safe.
- **The 2025 NMRA National Convention will be held in Novi, second week in July!** More information is coming, but get your layouts in shape for open houses, prepare possible clinics and be ready to volunteer!
- **Operating Sessions** - If you are interested in op sessions, please contact **Curt Danielewicz** (curt48044@gmail.com) First-timers are welcome. In asking everyone in attendance what is their reluctance to attend op sessions, the common answers were not knowing what to do and scheduling issues. Please consider joining an op session.
- **The Mentor/Mentee file (give help/receive help)** is at https://drive.google.com/file/d/195MkOSzCII04pfcGtM4Lcni-sIExBw2_/view?usp=sharing
- The private **Clinton River Division Facebook group** at <https://www.facebook.com/groups/288929175921717/>

TIPS

Warren Yohe - referred to **NewTracksModeling.com** in his S & T. This is a free (but you must go to the website and sign-up. Every Wednesday is a live show at 7 pm Eastern time. Build alongs, (Warren got tips on his project from the owner of Banta Models!), other modelers showing their projects, tips and neat info. Each episode is also on Youtube live and recorded. There is also a Youtube program on Thursdays. Try it out. Also, **NewTracksModeling.com** is sponsoring a post-high school scholarship program. See the information on the last page of this issue. One tip from last week's program - use dental syringes for gluing models, available from Amazon - 9 Pack 12ml/cc Dental Syringe with Curved Tip & Measurement Disposable Graduated Dental Irrigation Syringe for Oral Dental Care, Tonsil Stones Removing, Lab, Feed Small Pet (9 Pack-Curved-Measurement) <https://a.co/d/5EsFNG7>

George VanDuyne presented an informative clinic about the history of crossing gates and how to model them. The recording of the clinic is available on Zoom at https://us02web.zoom.us/rec/share/prcujGSOa2Yfp1E-48NOIKUk99hFMt5iyIplLSP_QdeyHXB3esDDPDnc1udE8IITh.n68In_YWQMnT7Zsv, then passcode **8HMvt=C0** (the last digit is zero not the letter O) The powerpoint presentation is also available on the Division website div8.ncr-nmra.org then click on Presentations, then Modeling Manual Crossing Gates

Election of Officers for two year terms beginning March 2023 Elected by Unanimous Consent at the February 16, 2023 Meeting

Superintendent: **Mark Mincek**

Secretary: **Irv Chmielewski**

Treasurer: **Dan Shilt**

Director: **John Jackson**

Ex-Officio Director (Position as Past Superintendent): **Curt Danielewicz**

SCHEDULES

For more information, contact the organization listed. We do not have further details. Obviously, schedules are subject to change. Check with the venue before the event.

March 4 & 18 - Redford Model Railroad Show, 27316 Michigan Ave, Inkster, MI
www.redfordmrrc.org

March 11 & 25 - Detroit Model Railroad Club, 104 N Saginaw, Holly, MI
www.dmrrc.org

March 16 - Clinton River Division Monthly Meeting, 7:00 pm
at Troy Christian Chapel

March 19 - Model Train Show, Taylor Town Center, 22525 Ecorse Road, Taylor, MI
Mike Leland, 313-955-5523

Fridays, Saturday, Sundays, through March 26 - Chi-Town Union Station,
“World’s Largest O Scale Model Railroad”,
8275 Cooley Lake Road, Commerce, MI 48382 248-613-9471

MARCH 2023 MEETING
Live at Troy Christian Chapel and on ZOOM
Thursday, March 16, 2023, 7:00 pm

CLINIC:

Selected prototype photos(60) from the collection of the late Dave Regittko, which were donated to the NMRA
by Tim Fisher

SHOW & TELL:

Railroad models or photos from Michigan, Ohio, and Pennsylvania, or Current Projects

Join us after the meeting for snacks and conversation at Leo's Coney Island, Walton & Livernois

We will send you notice of the meeting and the ZOOM code a few days before the meeting. Please look in your SPAM folder if you don't receive it timely. Don't ask, I have no idea why some providers think I am SPAM!

CLINTON RIVER DIVISION 8 BOARD OF DIRECTORS

Superintendent: Curt Danielewicz - curt48044@gmail.com
Treasurer: Dan Shilt - ddshilt@aol.com
Secretary: Kent Aughe - chappie81@wowway.com
Directors: Mark Mincek - themotive@att.net
Phil Doolittle - doolittlep@comcast.net

Car House Editor: Kent Aughe

Car House Proof-reader: Barbara Aughe

NEXT MEETING - Live and ZOOM

March 16, 2023 - Thursday at 7:00 pm

TROY CHRISTIAN CHAPEL

Second Floor Meeting Room (use parking lot door and stairway just inside the door. There is also an elevator in the lobby if you prefer)

400 E. LONG LAKE ROAD, TROY, MI

See you there! Same Time, Same Place, Third Thursday, Every Month



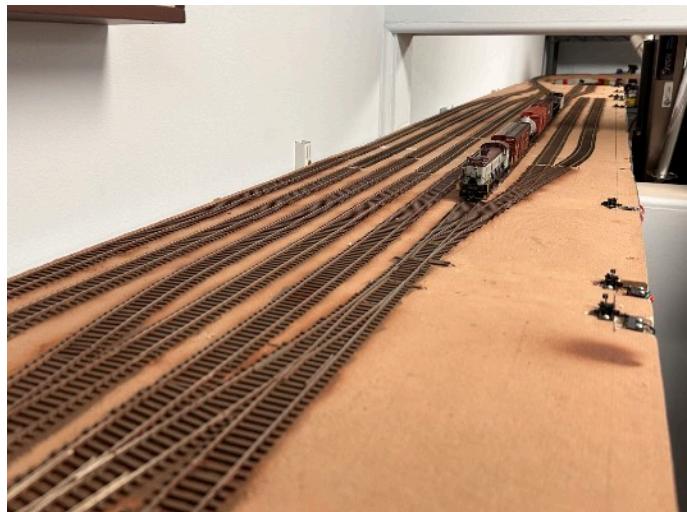
Thank you to Ed Biegas (top photo) and Jim Dennis (lower photo) for opening their homes and layout for the February 19 tours. Great layouts, great visitors, great fun. Everyone else, consider opening your layouts for a tour; contact Dan Lewis, MMR, or an officer.



Fort Wayne Rails 2023, the NCR Convention is October 19-22, 2023 at the Holiday Inn Purdue Fort Wayne. For information and to register, go to www.div3.ncrnmra.org/fort-wayne-rails-2023

Tony Brisky has 3/16" X 12" X 12" cork tiles to give away. You must pick up from Tony (tony@brycoinc.com)

Dave Katona recently completed the staging yard for his layout. It is built on two halves of a hollow core bi-fold door. A lot easier than building benchwork. The track was laid with the doors on sawhorses, then flipped over to do the wiring. The two halves of the yard were then mounted on shelf brackets on the wall and the track laid across the connection. The staging yard runs across the back wall of the basement going through a hole in the wall between the workshop and laundry room.



***New Tracks Modeling* Mentoring Scholarship for Young Model Railroaders** By **Jim Kellow, MMR**

New Tracks Modeling is about Mentoring and model building. It is a volunteer organization run by model railroaders, which also raises funds for its programs through volunteer contributions. This year *New Tracks Modeling* started an exciting new scholarship program for young model railroaders.

Details about the scholarship, applications, and filing instructions are available on our website at: <https://newtracksmodeling.com/scholarship/>

We ask the members of the model railroading community to spread the word and encourage young model railroaders to take advantage of this scholarship. For questions or how to submit a paper copy of an application, please contact the Scholarship Committee Chairman, Bob Davidson at:

Bob Davidson

New Tracks Modeling Mentoring Scholarship
6273 Gulf Stream Path
Cicero, NY 13039
email: bobdavidson@newtracksmodeling.com

If you have a son or daughter or a grandchild who meets the scholarship criteria *New Tracks Modeling* hopes you will make them aware of this scholarship opportunity. Naturally we also hope you will communicate our scholarship program to your friends and other modelers.

New Tracks Modeling live Zoom shows are about all aspects of model railroad modeling. These are also live streamed on the *New Tracks Modeling* YouTube channel. The live shows are available to all model railroaders. To get the Zoom log-in link for attending a live show, subscribe through the, www.newtracksmodeling.com website. There are over 800 videos of past shows on the *New Tracks Modeling* YouTube channel for everyone to enjoy.

Thank you for your support and participation in helping get the word out to young modelers about our scholarship. For your questions please contact **Jim Kellow, MMR**, at: jimkellow@newtracksmodeling.com. Thank you in advance for your interest and assistance!

Thanks for your membership, support and participation with the Clinton River Division, in person at Troy Christian Chapel or in the Zoom meetings.