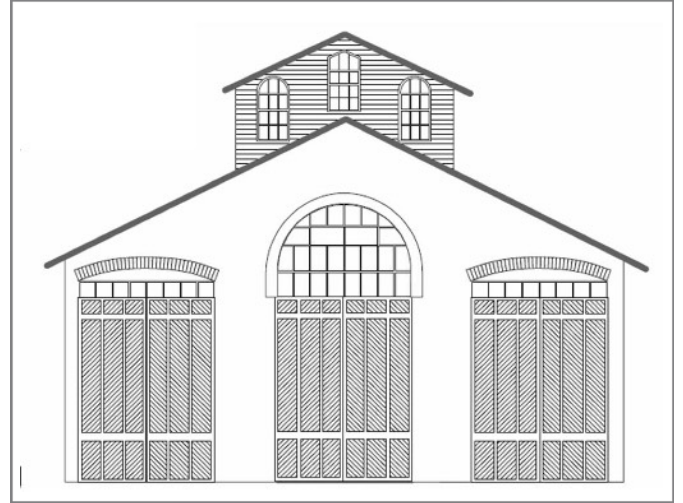


CAR HOUSE

DECEMBER, 2022



Website:
<http://div8.ncr-nmra.org>
or
clintonriverdivision.ncr-nmra.org



Website:
<http://www.nmra.org/>

SHOW & TELL - December 2022 - Current Project



Mike Leland purchased a built-up “Merchant’s Row” block at a train show, detailed with acrylics, custom signs and electrical feeds on the rear (not shown). He also built the Rail-Link box, weathered with acrylics.

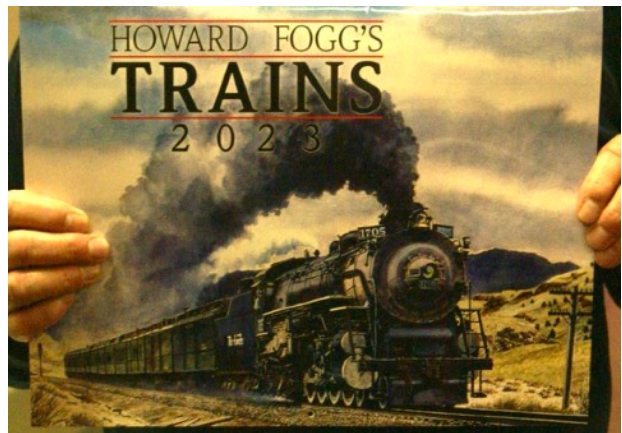


Ken Scherer displayed his recently-acquired Shay and his Paul Adams print of the action at the Michigan Central Terminal in days long-gone.

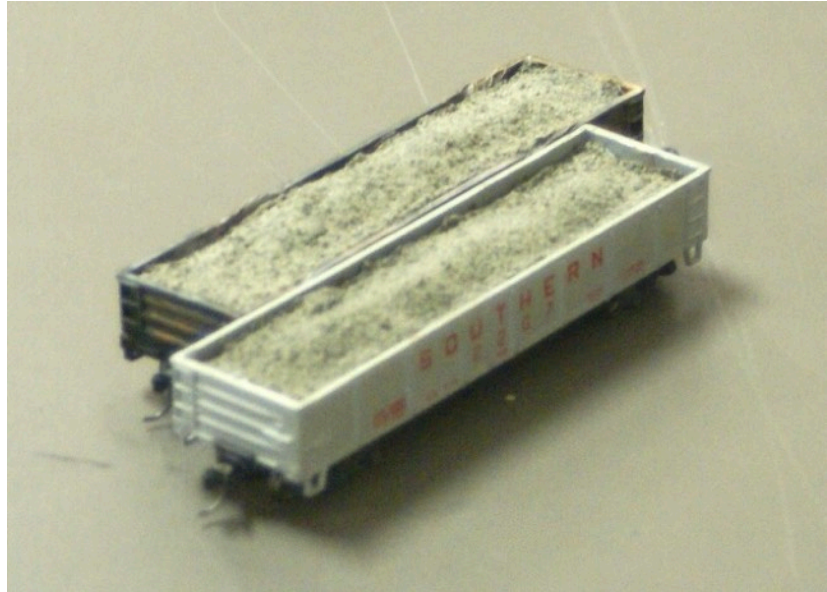


Bob Stelmach bought key fobs with lights (30 for \$15 through Amazon) and glued to wood skewers. They make nifty lighted coupler picks.

Dave Thornton brought his “photo” for the month - a 2023 Howard Fogg Train Calendar.



Richard Wahl displayed his gondolas with ash loads. He added wood strips covered with foil and window screen. He pressed them into the gons with wax paper surround, covered them in well send and pump rust. Added glue, after drying, the result is removable ash loads.



ANNUAL PHOTO ALBUM BY MEMBERS

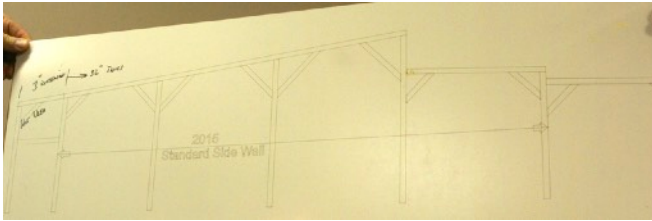
Thanks to all the members who submitted photos. 91 photos in total! Here are a sample chosen by your editor.

JIM ZINSER, MMR



UP radio station on **Jim's** railroad. WZ(Zinser)R(radio). The theatre is showing "Invasion of the Body Snatchers". The stake truck is unloading pods. Is it a promotion or invasion?

LARRY WOLOHON, MMR



Full scale plans for the roundhouse, and resulting scratch-built O Scale model by Larry.



STEVER WEBER



Road Trip: Cass Scenic Railroad Shay #2.



A scene from Steve's railroad.

RICK WARE



Log loading on Rick's 1:24 Loon Line. An Oops on the HO layout at Crossroads Village

GEORGE VAN DUYNE



Another road trip: Western Maryland summertime. **George's** favorite steamer, #1225 (ours also)



DAN SHILT



Huntsville & Lake of Bays Christmas Train, Ontario. **Dan** is a former conductor for this excursion. **Dan's** friend in Toronto "dresses" his live-steamer for Christmas.

JERRY SHANEK



Union Pacific station in Marysville, KS. **Jerry's** grandfather was a station agent near there. Jerry remembers playing with the baggage carts. Second photo is a passenger bench in the restored station, which is used for social functions and events center.

GREG RICH, MMR



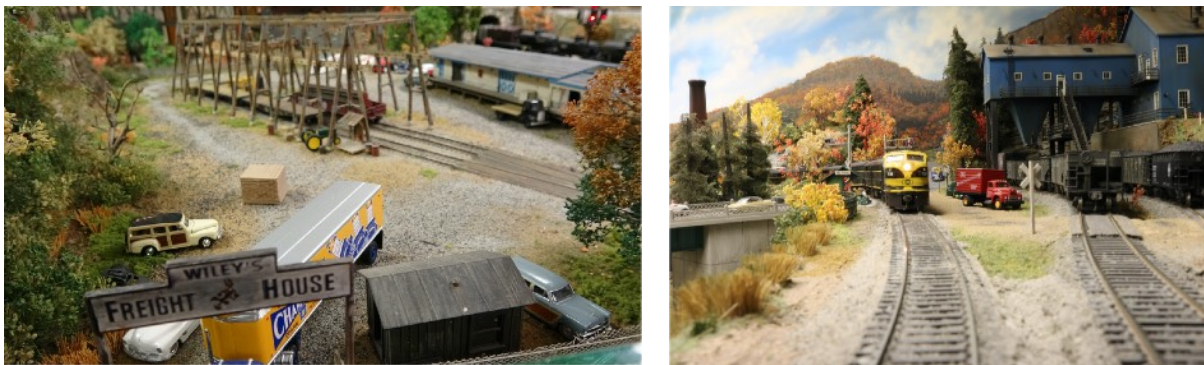
Highly detailed scenes from **Greg's** HO railroad empire, New Baltimore & Fair Haven.

DAN LEWIS, MMR



Diesel freight consist drifting downhill on the North Montana Line.
Durango & Silverton conductor discusses the upcoming run with the engineer.

RON KING, MMR



Wiley's Freight House awaiting a busy day and an Erie covered wagon approaches town on **Ron's** layout set in 1953.

TIM FISHER



Tim photographed the layout of **Maynard Mitchell** at the Division 9 Kalamazoo Mini-Convention in October. Track is 6" above benchwork to allow scenery below track level. Combining excellent scenery with kit bashed craftsman kits, **Maynard** achieved a wonderful layout in 15' by 42' space.

PHIL DOOLITTLE



Phil also attended the Division 9 Mini-Convention in Kalamazoo. The mill complex is from the layout of **Dave Vinci**, the bridge scene is **Bill Nichols'** modeling. Ed note: When opportunities come to attend other Division's events, and our own layout tours (see flyer in this issue for the next Clinton River Division tour on February 19), make every effort to attend. You will see great modeling, get tips to improve your layouts, and make new friends. Another benefit of NMRA membership!

CURT DANIELEWICZ



The left photo is Grand Trunk's Brush Street Station, a large passenger and freight facility dating from the turn of the 20th Century. The RenCen now occupies the site.

TERRY CUMMINS



A vintage 4-4-0 occupies a trackside space in Cedarville, while a manifest freight slows around a curve, approaching Cedarville on **Terry's** layout



IRV CHMIELEWSKI



Irv's layout depicts the UP south of the Porcupine Mountains. The left scene is a copper mine, the right scene is passenger train heading across country.

TONY BRITSKI



An Illinois Power & Light Birney single truck Birney AND **Tony's** model of it (he actually built 6 of them). They ran in Campaign-Urbana.

KENT AUGHE



Two scenes from **Kent's** hometown of Kokomo, Indiana - the former Nickel Plate freight house at the north end of downtown, now a restaurant and office space. Walthers Water Street Station (HO and N Scale) is a good representation. The "switch tower" controlled traffic signals along Buckeye Street, past the County Courthouse. In the 1960s, all signals were automated, but a mannequin still occupies the tower in complete silence

ALL MEMBERS - please check your NMRA membership cards and renew timely. Insurance regulations require meeting participants be NMRA members (after 3 meetings). Please stay current. You can renew at **NMRA.org**. There are so many benefits of membership, including discounts at major online retailers, information available at the website. Membership is \$68 with digital delivery of the NMRA Magazine, \$92 with US mail delivery of the magazine.

CLINTON RIVER DIVISION USER FEES remain at \$10/year. The fees run on a calendar year basis and support Division activities. We receive no funds from NMRA.

BUSINESS MEETING ITEMS

- **November 2022 Car House** approved.
- **November Treasurer's report:** \$4,568.35 on hand. Main expense was annual fee of \$168 for Constant Contact email distribution program license. Approved.
- **Master Model Railroaders** in attendance at the November meeting: **Ron King, Dan Lewis, Larry Wolohon, and Jim Zinser.**
- **Welcome** to visitor **Neal Thomas**, who recently moved from Elkhart, Indiana, where he had been secretary of the Michiana Division. Glad to have you attend, **Neal.**
- **CLINTON RIVER DIVISION LAYOUT TOUR - Dan Lewis, MMR,** has scheduled a tour of two layouts for Sunday, February 19, 1-4 pm. See flyer in this issue for details.
- **Door monitor** at the church for the January meeting is **John Martin** and **Steve Weber** for February Thanks for volunteering. Please consider volunteering for future months. For security reasons, the church door must remain locked at all times. Thanks for helping out the Division and keeping everyone safe.
- **The 2025 NMRA National Convention will be held in Novi, second week in July!** More information is coming, but get your layouts in shape for open houses, prepare possible clinics and be ready to volunteer! The next Clinton River Division hosted regional convention will be in 2028.
- **Andy Keeney**, Lansing Area, will host an operating session on Saturday, January 28. If you are interested, please contact **Curt Danielewicz** (curt48044@gmail.com)
- **The Great Train Show, Suburban Collection Showplace, Novi,** January 21 & 22. Division 6 has a booth at the show, but they also have their own show on January 22 (see schedules). They ask if anyone can volunteer staff their booth on Sunday, January 22. If you can join **Larry Wolohon** as a volunteer, please contact him (larrywolohon@comcast.net) Thanks.
- **The Mentor/Mentee file (give help/receive help)** is at https://drive.google.com/file/d/195MkOSzCII04pfcGtM4Lcnl-slExBw2_/view?usp=sharing
- The private **Clinton River Division Facebook group** at <https://www.facebook.com/groups/288929175921717/>

SCHEDULES

For more information, contact the organization listed. We do not have further details. Obviously, schedules are subject to change. Check with the venue before the event.

December 28, 29, 30, 12 pm - 3 pm each day Stoney Creek Model Railroad Club Exhibit at Rochester Hills Museum at Van Hoosen Farm, 1005 Van Hoosen Road, Rochester Hills, 248-656-4663

January 7 & 21 - Redford Model Railroad Club Open House,
27316 Michigan Ave., Inkster, MI

January 14, 15, 28, 29 - Detroit Model Railroad Club Open House, noon to 5 pm each day, 104 N. Saginaw, Holly, MI

January 19 - Clinton River Division Monthly Meeting, 7:00 pm
at Troy Christian Chapel

January 21, 22 - Blissfield Model Railroad Club Open House, 109 E. Adrian, Blissfield, Michigan, 517-486-0404

February 18, 19 - Ann Arbor Model Railroad Club Annual Show - Saline Middle School, 7190 N. Maple Road, Saline, MI 48176

Fridays, Saturday, Sundays, through March 26 - Chi-Town Union Station, "World's Largest O Scale Model Railroad",
8275 Cooley Lake Road, Commerce, MI 48382 248-613-9471

2nd Annual
MODEL RAILROAD SALE!

Hosted by **Division 6**
North Central Region - National Model Railroad Association

SUNDAY – JANUARY 22, 2023
10am - 3pm



Costick Community Center
28600 W Eleven Mile Rd, Farmington Hills, MI 48336

135 Tables of model railroad items - ALL scales!
Door Prizes Awarded every 45 minutes! (must be present to win)
Snacks and refreshments available



Admission –
\$5 per person over 18 years old (spouses/children under 18 = FREE!)
\$10 per person Early Bird entry at 9am
Information –
Barry or Terry 734-649-3056 (6pm-9pm) div6trainshow@gmail.com
VENDOR INFO on back side of this flyer!



JANUARY 2023 MEETING
Live at Troy Christian Chapel and on ZOOM
Thursday, January 19, 2023, 7:00 pm

CLINIC:
“LCC & JMRI”

By Art Williams & Don James, Detroit Model Railroad Club

SHOW & TELL:
Any electrical or electronic item or gadget

We will send you notice of the meeting and the ZOOM code a few days before the meeting. Please look in your SPAM folder if you don't receive it timely. Don't ask, I have no idea why some providers think I am SPAM!

CLINTON RIVER DIVISION 8 BOARD OF DIRECTORS

Superintendent: Curt Danielewicz - curt48044@gmail.com
Treasurer: Dan Shilt - ddshilt@aol.com
Secretary: Kent Aughe - chappie81@wowway.com
Directors: Mark Mincek - themotive@att.net
Phil Doolittle - doolittlep@comcast.net

Car House Editor: Kent Aughe

Car House Proof-reader: Barbara Aughe

NEXT MEETING - Live and ZOOM
January 19, 2023 - Thursday at 7:00 pm
TROY CHRISTIAN CHAPEL
Second Floor Meeting Room (use parking lot door and stairway just inside the door. There is also an elevator in the lobby if you prefer)
400 E. LONG LAKE ROAD, TROY, MI
See you there! Same Time, Same Place, Third Thursday, Every Month
Thanks for your membership, support and participation in person at Troy Christian Chapel or in the Zoom meetings.

Clinton River Division Layout Open House

SUNDAY, FEBRUARY 19, 2023
1-4 PM

Ed Biegas 39914 Wilmette, Sterling Heights, MI 48313



The Grandson Railroad is a freelance layout featuring short line operations. It fills a 16' x 20' room with a collection of small businesses and towns. Most businesses are named for my children or grandchildren. Andy's Welding Shop can fix anything but a broken heart, and of course the Chestnut Packing Co. is thriving.

**Jim Dennis 1143 Bembridge Dr.,
Rochester Hills, MI 48307**



The Streeter Division was named for Streator, IL, where the NYC and the CB&Q cross. The layout, began in 2013, is 50' x 30' and is set in the steam to diesel transition era. It consists of cityscapes, industry, parks, a car float, a small farm, and five stations. Control is Digitrax DCC.