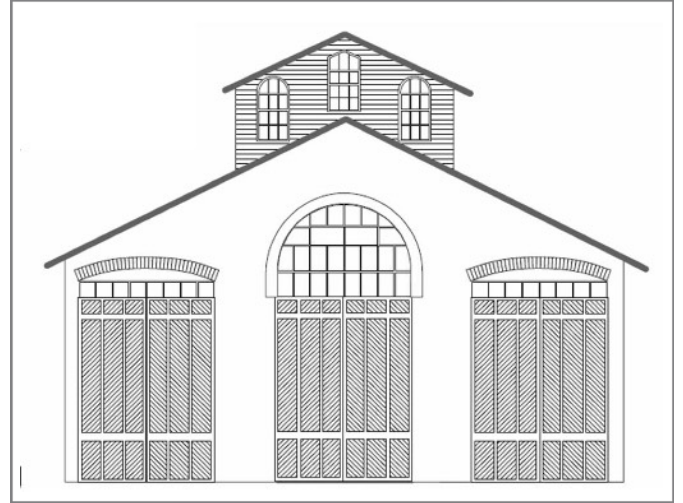


CAR HOUSE

NOVEMBER, 2022

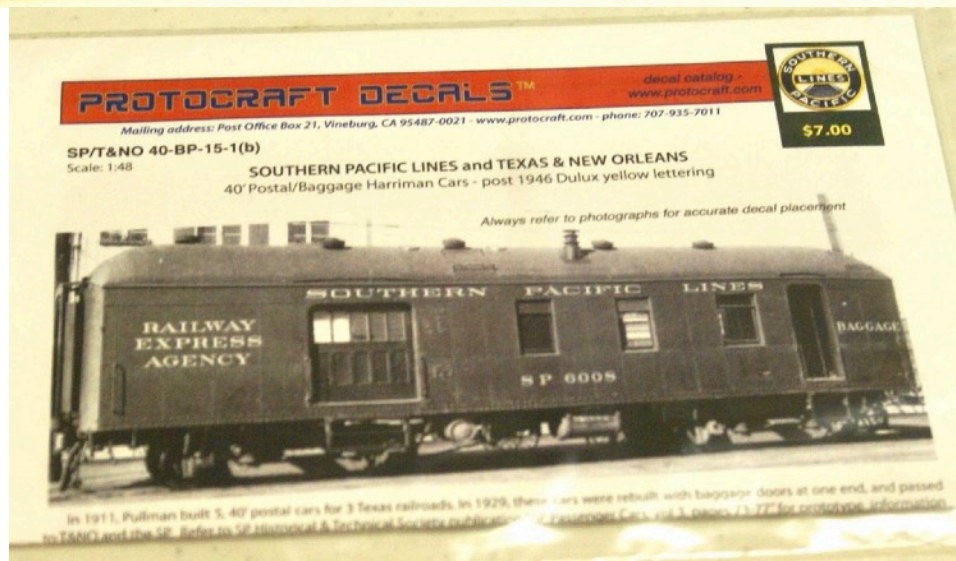
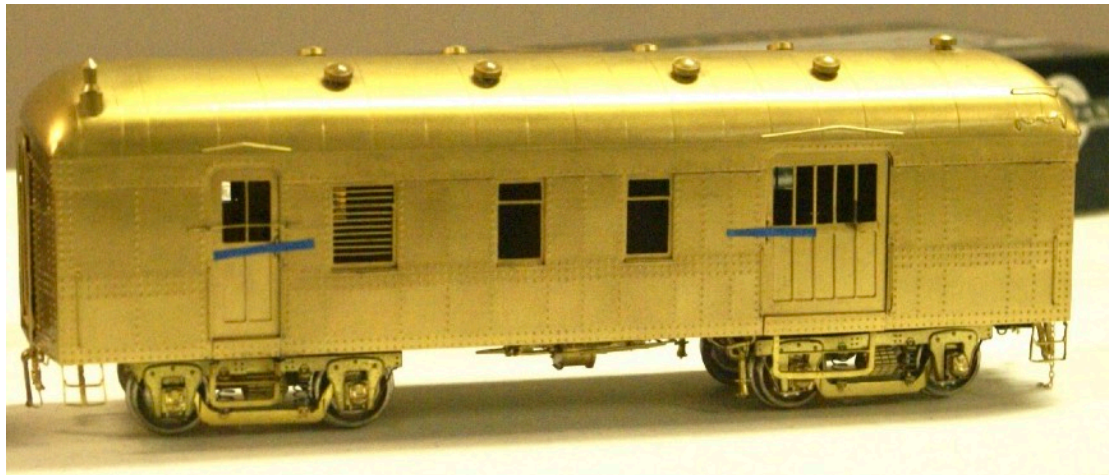


Website:
<http://div8.ncr-nmra.org>
or
clintonriverdivision.ncr-nmra.org



Website:
<http://www.nmra.org/>

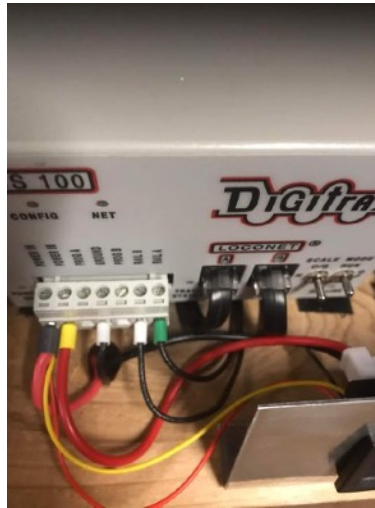
SHOW & TELL - NOVEMBER 2022 - PASSENGER CARS or Current Project



Larry Wolohon, MMR, exhibited a unique brass "O" Scale Southern Pacific 40' RPO/baggage car with photo of the prototype. (See previous page)



Terry Cummins built a flat-bed dolley for filming locomotives in action on his layout, using various types of "spy" cameras. He also uses Precia ferrules and crimper for wiring "plug-ins." Available on-line.



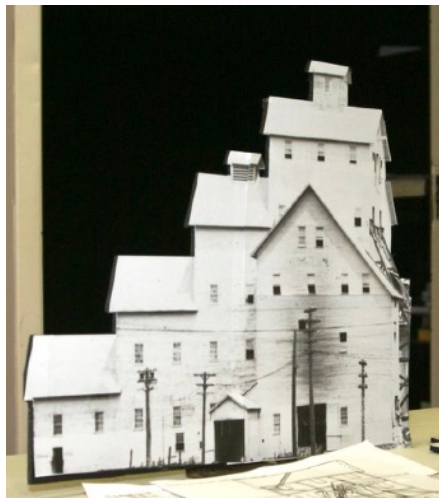
Ken Scherer displayed two Grand Trunk Western coaches.



Phil Kenyon brought three "N" Scale C&O streamlined, heavy-weight, rib-sided passenger cars in classic paint scheme.



Ron King, MMR, modified and super-detailed this NYC heavy-weight sleeper, with interior and passengers (surgically modified to fit in the seats) painted and decaled, new trucks and couplers - from an American Models car.



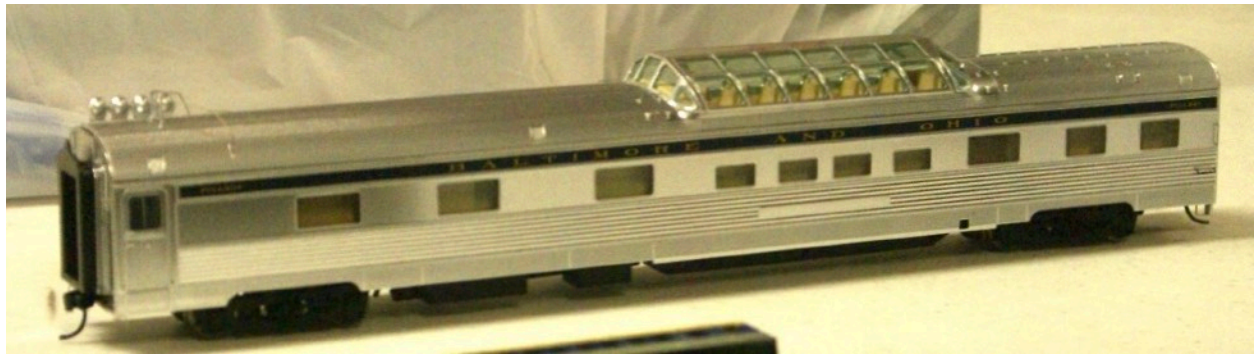
Warren Yohe built this mock-up of the Quincy Mine Shaft Rockhouse No. 6 using foam board and photos. It is 80% of HO scale to fit the expansion of his Mineral Range Railroad.



Greg Rich, MMR - built a LaBelle wooden kit of an 1886 observation car, added Central Valley trucks and detailed interior.

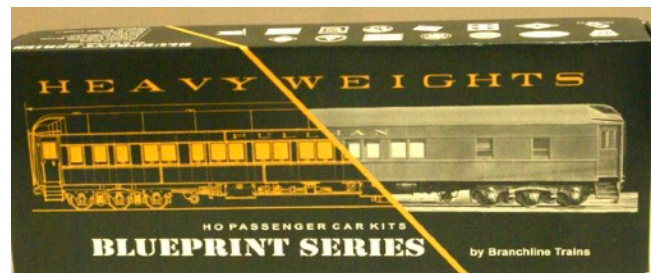


Dan Lewis, MMR, kit bashed this Milwaukee Road passenger car with brass car sides and detailed interior.



Mark Mincek exhibited a B&O lightweight dome car. The B&O had three such cars, “Starlight,” “Moonlight” and “Sunlight.”

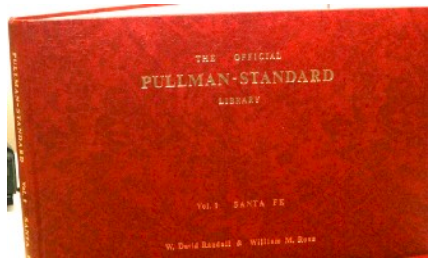
Steve Weber brought an HO Pullman sleeper. A “Blueprint Series” offering by Branchline Trains.



Dave Thornton displayed an O Scale B&O 12-1 Pullman sleeper.



Jim Zinser, MMR, exhibited a Milwaukee Road coach, a Wlather’s car, that will run in the “Copper Country Limited” on his UP layout.



Bob Taffs brought a couple of passenger car books, including “The Official Pullman Standard Library, Vol 1, Santa Fe. Bob has “tons” of 80’ brass passenger cars. One car of the “Chicagoan” has never been modeled, but he found one that someone had kit bashed, not displayed at the meeting.

Phil Doolittle displayed two cheap observation cars. His “pipe dream” is to kitbash them into a private executive car and a “pay-car.” (No photo)

Paul Runyan (via Zoom) showed a Walther’s Lounge/observation/2 bedroom PRR passenger car (still needs lettering), part of his “shortened” version of the Broadway Limited. The Limited is pulled by a 4-4-4-4 or streamlined 4-6-2.

Rick Ware (via Zoom) has been landscaping both of his indoor layouts, an HO scale line and a G Scale layout.

TIPS & ANNOUNCEMENTS

Terry Cummins uses a usb powered soldering iron from MicroCenter. Warms up in less than a minute.

Dan Lewis, MMR, has been spray painting with Trucolor acetone-based paint, thins it 40% with acetone. Works well with an airbrush.

Phil Doolittle attended the Division 9 mini-convention in October. His one-day participation included good clinics and an excellent tour of 6 layouts. It was a good day.

- **ALL MEMBERS** - please check your NMRA membership cards and renew timely. Insurance regulations require meeting participants be NMRA members (after 3 meetings). Please stay current. You can renew at **NMRA.org**. There are so many benefits of membership, including discounts at major online retailers, information available at the website. Membership is \$68 with digital delivery of the NMRA Magazine, \$92 with US mail delivery of the magazine.

BUSINESS MEETING ITEMS

- **October Car House** approved.
- **October Treasurer's report:** \$4,281.70 on hand. Main expense was annual fee of \$168 for Constant Contact email distribution program license. Approved.
- **Master Model Railroaders** in attendance at the November meeting: **Ron King, Dan Lewis, Greg Rich, Larry Wolohon, and Jim Zinser.**
- **CLINTON RIVER DIVISION LAYOUT TOUR - Dan Lewis, MMR,** is working to obtain layouts for sometime during first calendar quarter of 2023/
- **Door monitor** at the church for the December meeting is **Terry Cummins** and for January is **John Martin.** Thanks for volunteering. Please consider volunteering for future months. For security reasons, the church door must remain locked at all times. Thanks for helping out the Division and keeping everyone safe.
- **The 2025 NMRA National Convention will be held in Novi, second week in July!** More information is coming, but get your layouts in shape for open houses, prepare possible clinics and be ready to volunteer!
- **The Mentor/Mentee file (give help/receive help)** is at https://drive.google.com/file/d/195MkOSzCIIO4pfcGtM4Lcni-sIExBw2_/view?usp=sharing
- The private **Clinton River Division Facebook group** at <https://www.facebook.com/groups/288929175921717/>

SCHEDULES

For more information, contact the organization listed. We do not have further details. Obviously, schedules are subject to change. Check with the venue before the event.

November 25, 26, 27, Dec 3, 4, 10, 11 - Detroit Model Railroad Club Open House, noon to 5 pm each day, 104 N. Saginaw, Holly, MI

November 25,26,27, December 3, 10, 11, 17, 18, 28, 29, 30, 12 pm - 3 pm each day Stoney Creek Model Railroad Club Exhibit at Rochester Hills Museum at Van Hoosen Farm, 1005 Van Hoosen Road, Rochester Hills, 248-656-4663

November 26 - Model Train Show at Packard Proving Grounds, 10 am - 3:30 pm - 49965 Van Dyke Ave, Shelby Township, MI 48317

November 27 - Southeast Michigan Model Railroad Show & Sale, Washtenaw Farm Council Grounds, 5055 Ann Arbor-Saline Road, Ann Arbor, 517-449-9063

December 10, 11, 17, 18 - Blissfield Model Railroad Club Open House, 109 E. Adrian, Blissfield, Michigan, 517-486-0404

December 15 - Clinton River Division Monthly Meeting, 7:00 pm
at Troy Christian Chapel

DECEMBER 2022 MEETING
Live at Troy Christian Chapel and on ZOOM
Thursday, December 15, 2022, 7:00 pm

Special Program:
“YOUR PHOTOS”

Annual collage of your favorite photos of models, prototypes, other railroad related topics - please submit no more than five (5) photos in .jpeg format by email to Curt Danielewicz - curt48044@gmail.com

or

**Kent Aughe - chappie81@wowway.com
by December 10.**

We will send you notice of the meeting and the ZOOM code a few days before the meeting. Please look in your SPAM folder if you don't receive it timely. Don't ask, I have no idea why some providers think I am SPAM!

CLINTON RIVER DIVISION 8 BOARD OF DIRECTORS

Superintendent: Curt Danielewicz - curt48044@gmail.com

Treasurer: Dan Shilt - ddshilt@aol.com

Secretary: Kent Aughe - chappie81@wowway.com

**Directors: Mark Mincek - themotive@att.net
Phil Doolittle - doolittlep@comcast.net**

Car House Editor: Kent Aughe

Car House Proof-reader: Barbara Aughe

NEXT MEETING - Live and ZOOM

December 15, 2022 - Thursday at 7:00 pm

TROY CHRISTIAN CHAPEL

Second Floor Meeting Room (use parking lot door and stairway just inside the door. There is also an elevator in the lobby if you prefer)

400 E. LONG LAKE ROAD, TROY, MI

See you there! Same Time, Same Place, Third Thursday, Every Month

Thanks for your membership, support and participation in person at Troy Christian Chapel or in the Zoom meetings.

2nd Annual MODEL RAILROAD SALE!

Hosted by Division 6
North Central Region - National Model Railroad Association

SUNDAY – JANUARY 22, 2023

10am - 3pm





Costick Community Center

28600 W Eleven Mile Rd, Farmington Hills, MI 48336

135 Tables of model railroad items - ALL scales!

Door Prizes Awarded every 45 minutes! (must be present to win)

Snacks and refreshments available



Admission –
 \$5 per person over 18 years old (spouses/children under 18 = FREE!)
 \$10 per person Early Bird entry at 9am

Information –
 Barry or Terry 734-649-3056 (6pm-9pm) div6trainshow@gmail.com
VENDOR INFO on back side of this flyer!



2nd Annual MODEL RAILROAD SALE!

Hosted by Division 6
North Central Region - National Model Railroad Association

SUNDAY – JANUARY 22, 2023
10am - 3pm

Costick Community Center

28600 W Eleven Mile Rd, Farmington Hills, MI 48336

VENDOR INFORMATION..... HELLO!! Welcome to the 2nd Annual MODEL RAILROAD SALE, hosted by Division 6 of the NCR/NMRA. Here is the info you need to be a vendor at our event.....

- * Vendor tables are \$25 each. Tables size is 30' x 8' long. There is no limit to how many tables you can buy.
- * Tables will be assigned their location on a first registered-first get system. Please note any special requests below and we will do our best to accommodate you. * Set-up will start at 7am on Sunday, January 22.
- * All vendors will sell from behind your table. * There will be one chair per table. Extra chairs may be available.
- * We are doing an Early-Bird sale at 9am-10am for the public. You are free to sell at that time, or not. Doors open to the rest of the public at 10am-3pm.
- * Vendors are encouraged to bring their own lunch/food/snacks. Division 6 will be selling snacks and refreshments.
- * There will be FREE donuts and coffee for vendors only, from 7am-9:30am
- * Cancellations for table fee refunds must be given to us by Wednesday, January 11, 2023. No refunds if notified after that date, unless we can resell your tables.
- * Sorry that registration is not available online – please send this form with your payment, check or US Postal money order.
- * Make out to – **DIV 6 NCR NMRA** Send to – **Div 6 Model Railroad Sale 43642 Lotus Dr Canton, MI 48188**

EXHIBITOR AGREEMENT – Vendors will be responsible for any injuries or loss to themselves or their property. They expressly release DIVISION 6 and it's members from any liability and agree to indemnify and hold DIVISION 6 and it's members harmless. Signing this agreements means you have read all of the facts above and agree to them. If for any reason the SALE is cancelled, refunds will be issued asap. SIGNED: _____ Date _____

Name/Company _____ Phone _____

Address _____

Email _____ No of tables _____ No of helpers _____

Special requests - _____

Model Train Show

Saturday,
Nov 26, 2022
10 am-3 pm



Admission: \$8
Age 11 & under free w/adult
paid admission



Info: Mike 586-271-6024
or mikel.j@comcast.net

Vendor tables \$25 each
Set up starts at 7 am

Register at: PackardProvingGrounds.org/events

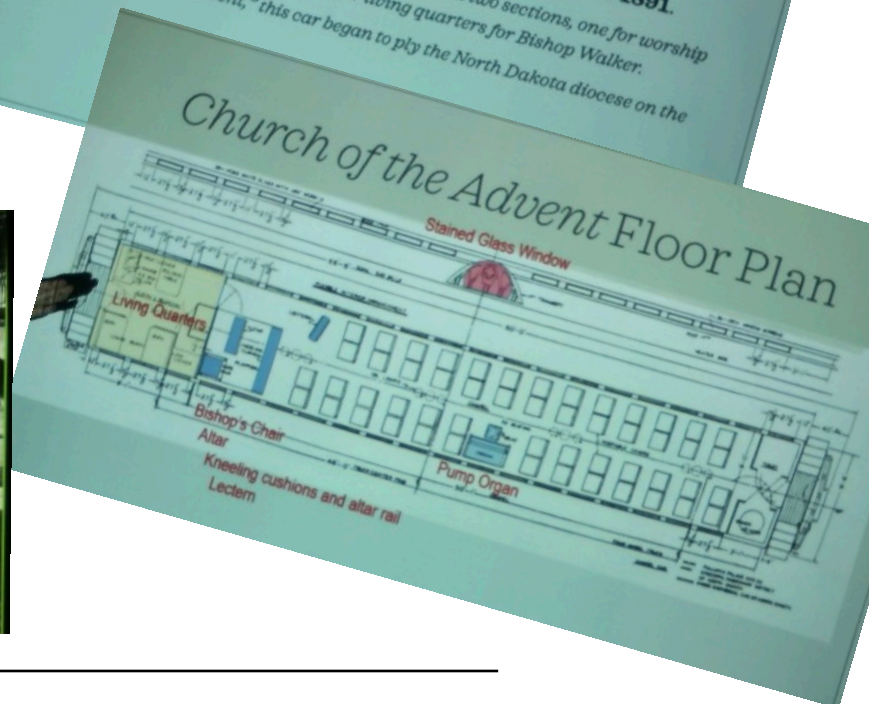
Packard Proving Grounds Historic Site

49965 Van Dyke Ave Shelby Twp, MI 48317

586-739-4800

CLINIC: "CHAPEL CARS" by Dan Lewis, MMR

Dan provided interesting information about a little-known project of several church groups and the railroads to bring "civilization and religion" to the West from 1891 through World War I and beyond.



After the December 15 meeting, join us for conversation and a snack at **Leo's Coney Island on Rochester Road at Walton Road**. After almost three years of no post-meeting gatherings, we are back at it!

Come, get acquainted or re-acquainted. Another benefit of NMRA membership. Enjoy your Clinton River Division friendships.