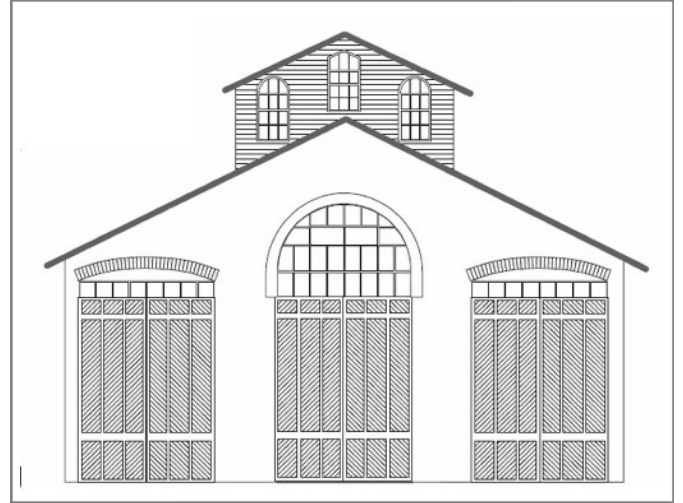


CAR HOUSE

OCTOBER, 2022



Website:
<http://div8.ncr-nmra.org>
or
clintonriverdivision.ncr-nmra.org



Website:
<http://www.nmra.org/>

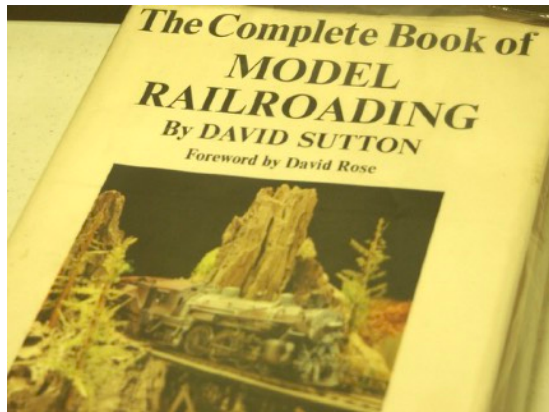
SHOW & TELL - OCTOBER 2022 - LAYOUT PLANS or Current Projects



Richard Wahl exhibited photos of the A.I. Root Company of Medina, Ohio, processors of honey and supplier of live bees for keepers. By 1911, Root shipped four boxcars of honey and bees per day. The live bees required a keeper

to ride in the car for the entire trip. The company is still in business. Rich is a beekeeper and writes a monthly column in a beekeeping magazine started by Root in 1873.

John Gavasso brought his “steamer of the month,” a Union Pacific 4-6-2, a DC model. The loco and tender are electrically joined for pick-ups.



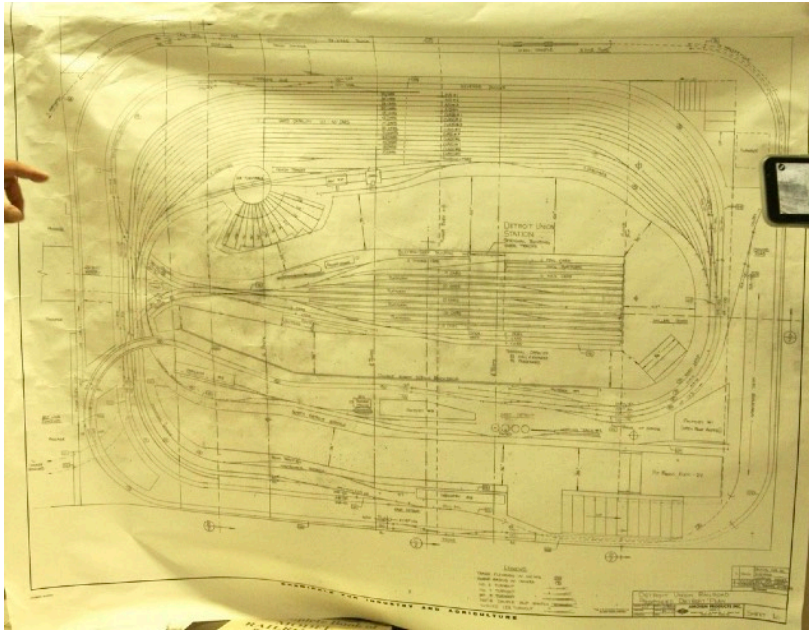
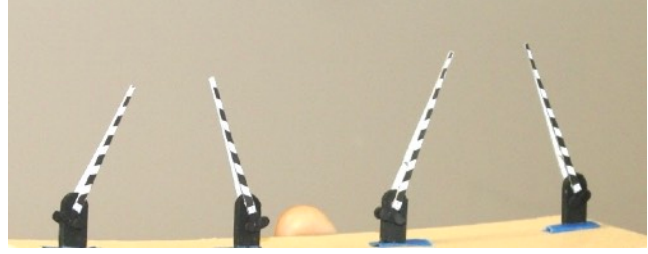
Irv Chmielewski regularly uses his “Complete Book Model Railroading” published in 1964. It has a wealth of information, covering all aspects of planning, building and scenery and remains a great reference. Irv has used the book to build three different layouts. **Jim Zinser, MMR**, via Zoom concurs, and uses his copy often. (The forward was written by David Rose, of big band fame, an accomplished model railroader.)

John Racey - showed his scratch-built S Scale American four-square house - plans in Sears 1910 catalog, the cost of materials was \$2,065 in 1910. He won first-place at the S Scale Convention.



John Jackson brought photos of his re-designed layout, under construction. This view shows the new cement spur to facilitate deliveries of raw materials and fuel.

George VanDuyne scratch-built crossing gates, using card stock and printed details. He is preparing a clinic of his technique.



Dave Thornton brought the plans for the new terminal at the Detroit Model Railroad Club layout in Holly, Michigan.

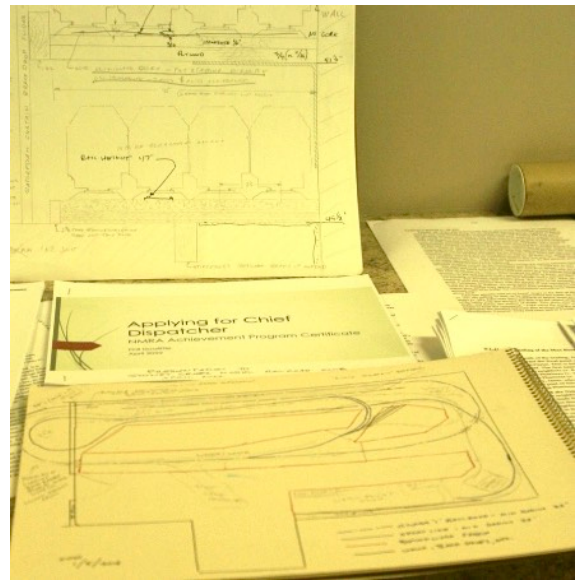
Greg Rich, MMR - built an (old!) L & W Models kit wood tank car, detailed to serve Blackton Oil Company on his layout.



Terry Cummins has built inexpensive static grass applicator from battery-operated fly swatter, available at Harbor Freight and other stores for under \$10. Plans are published on YouTube.

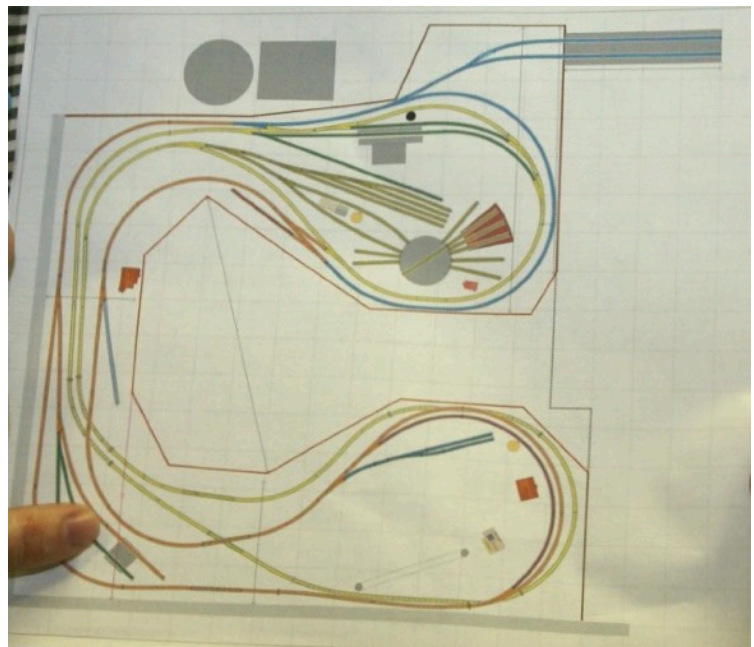


Phil Doolittle presents the drawings for his Doo Line, including elevation, train descriptions, timetables and string charts, in preparation for submission to NMRA for his Chief Dispatcher certificate.



Steve Weber weathered, added couplers to these Rivarossi skeleton log cars. He is also preparing spreadsheets of his rolling stock.

Larry Dickinson brought plans for his 16' X 16' HO layout





Bob Kantz brought several unneeded buildings and rolling stock for free distribution to Division members.

George Anderson (Zoom) displayed a map and history of the Keweenaw copper country, the Hancock & Calumet Railroad and the traction line for mine workers.

Keweenaw

LURE OF THE COPPER COUNTRY

FROM ROCK TO INGOT Processing Copper

THE BUSINESS OF MINING

Additional Show & Tell participants without photos

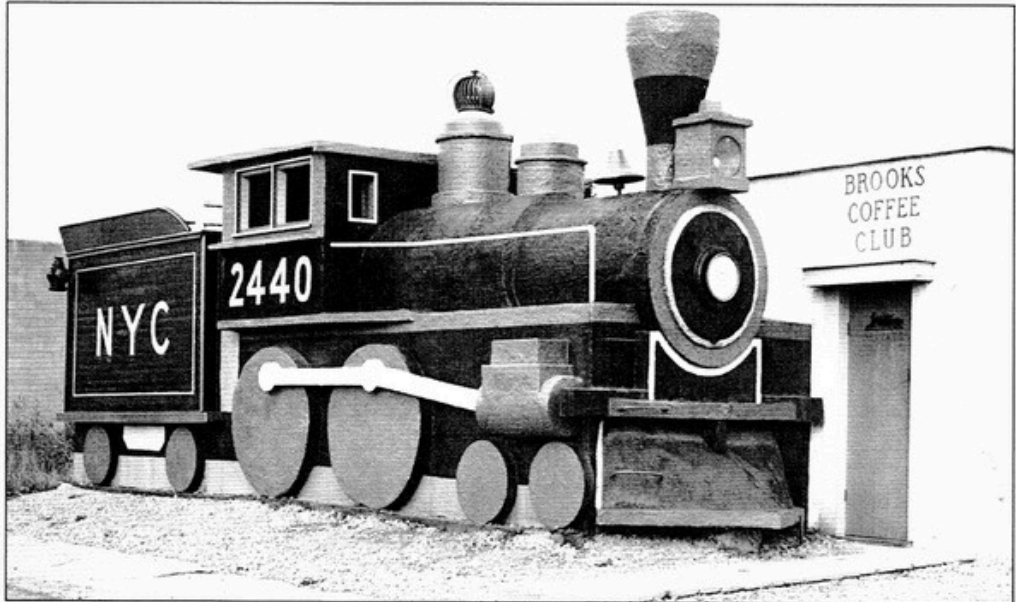
- **Tim Fisher** brought various layout planning and design books.
- **Larry Wolohon, MMR**, displayed and explained his track-plan.
- **Ken Scherer** exhibited the track-plan of his new layout.
- **Bob Scherer** is building an extension of the New York Central to Oxford and planning an old interurban line to Flint.
- **Chuck Neff** brought maps of US military facilities, published in 1941.
- **Mark Mincek** displayed one of many versions of his track-plan that eventually became his layout.
- **Dan Shilt** models the Huntsville & Lake of Bays RR (Ontario) in On30. The 1 1/8 mile long railroad had an elevation change of 103' in the 1 1/8 mile, with a 200' hill midway. The ruling grade with 8.25 to 11%. Dan's layout is 3-4%.
- **Alex Radu** found his layout plan online. He modified it, but the curves were too sharp. He is revising.
- **Tony Britsky** (Zoom) asks about electronic design programs. Terry Cummins suggests "Any Rail" program for \$30. Several others recommend "CadRail" at about \$100.
- **Dan Mitzel** (Zoom) acquired O M & E Railroad station diagrams and operating manuals - including instructions for switching sidings.
- **Jim Zinser, MMR** -he drew rough sketches and started laying track for his railroad. His current project is to recover from a pinched nerve in his lower back. Get well, Jim!
- **Phil Kenyon** built a free-lanced layout, just started laying track and continues to do it!
- **ALL MEMBERS** - please check your NMRA membership cards and renew timely. Insurance regulations require meeting participants be NMRA members (after 3 meetings). Please stay current. You can renew at **NMRA.org**. There are so many benefits of membership, including discounts at major online retailers, information available at the website. Membership is \$68 with digital delivery of the NMRA Magazine, \$92 with US mail delivery of the magazine.

Remembering the Brooks Coffee Club on Woodward

By Leslie L. Haight

Sometime back in the 1950s, my Aunt Sophie picked me up and took me out to lunch. She knew I had a model train set in the basement of my parents' home. Imagine my surprise when we pulled up to the restaurant, which had a front façade shaped like a train engine and coal tender car.

Bill Brooks ran the Brooks Coffee Club, located on the east side of Woodward between 12 Mile Road and Webster. If you were a member or had connections, you could gain entrance. My aunt's boss, Gar Sweezey, manager of the Michigan Bell Telephone office in Royal Oak, had arranged our lunch.



The Brooks Coffee Club was a private restaurant on Woodward and only members or invited guests were allowed to eat there.

The front door had the word "Private" on it in brass letters. Upon entering, you found yourself in a closet-sized room with a one-way mirror and an intercom. At the push of a button, a voice asked who you were and if you had a reservation. If you answered correctly, you were buzzed in. All manner of railroad memorabilia adorned the main room: model trains of all sizes, signs, lanterns, photographs, lamps and so on. You sat on a stool at a semicircular counter with each end disappearing into the wall. The counter had a train track and a little road bed.



Up on the wall was a chalkboard with the limited menu offerings of the day. A model train came out of the kitchen and stopped in front of your seats. A flat car held a pencil and an order pad. You jotted down what you wanted and placed it back on the train car. The train sped away with your order and exited through a portal in the wall. In a few minutes, another train emerged from the kitchen with your meal. It pulled up and stopped in front of you, so you could unload your food and beverage. Then it headed back to the kitchen.

When you were finished with your meal, yet another train delivered the bill. You placed your money in the train car and it took off for the kitchen. Then a dump truck appeared, stopped in front of you and dumped your change on the roadbed. All this took place without any appearance by the owner or any employees. I think it was a one-man operation. I don't remember there being any other customers at the counter or in the building when we were there.

The building was a landmark on Woodward from 1938 until it was torn down in 1964. I have talked to many people who remember seeing it, but only two others who actually ate there. The story is always the same, and we are still talking about it more than 60 years later. It is one of my fond memories of growing up in Royal Oak.

Note: The Brooks Coffee Club was replaced by Jim Enners Coffee/Donut Shop and then became Siam Spicy Thai restaurant, which is now also closed.

Originally printed in the [Royal Oak Historical Society](#) newsletter in [May 2022](#), authored by [Leslie L. Haight](#) Reprinted by permission.

BUSINESS MEETING ITEMS & ANNOUNCEMENTS

- **September Car House** approved with correction of misspelled name - Tim Fisher.
- **September Treasurer's report:** \$4,447.70 on hand. \$22 income - user fees and fines, \$164 expenses for publicity brochures and train show display. Approved.
- **Master Model Railroaders** in attendance at the October meeting: **Greg Rich, Larry Wolohon,** and **Jim Zinser** (Zoom).
- **Guests** at the October meeting: **Chuck Neff** (mainly railroadians) and **Alex Radu** (HO). Welcome, come again.
- **New Clinton River Division name tags** are here. Order yours at the next meeting at no cost to you!
- **CLINTON RIVER DIVISION LAYOUT TOUR** - *Saturday, November 5* - **Ron Griffin** and **Greg Rich, MMR** - see flyer in this issue.
- **Operations Sessions** ("Op sessions"): **Andy Keeney** will hold another op session after Thanksgiving at his Lansing home. Contact Curt Danielewicz for information. **Operations Road Show** in Saline have invited Clinton River Division members to participate in sessions at mutually agreed times. Road Show needs 8-10 operators and prefers Sunday. *We need firm commitments from our members to schedule Operation Road Show. Thank you for signing up at the next Division meeting*
- **Door monitor** at the church for the November meeting is **Steve Weber**, and December is **Terry Cummins**. Thanks for volunteering. Please consider volunteering for future months. For security reasons, the church door must remain locked at all times. Thanks for helping out the Division and keeping everyone safe.
- **The Mentor/Mentee file (give help/receive help)** is at https://drive.google.com/file/d/195MkOSzCII04pfcGtM4Lcni-slExBw2_/view?usp=sharing
- The private **Clinton River Division Facebook group** at <https://www.facebook.com/groups/288929175921717/>
- **Cincinnati Division 7, MCR**, is offering a new, Limited-Edition, HO scale N&W HC-46 ACF 2-Bay Covered Hopper in a unique repaint scheme with patched-out data. Check out the details: <https://www.cincy-div7.org/projects.html>

LAYOUT CONCEPT A CLINIC by TIM FISHER.

Components of Model Railroading:

- Time
- Space
- Money
- Complexity
- Skill Level

Time is the real problem. What will you throw overboard to have more time?

Layout size - BIGGER IS BETTER vs. SMALLER IS SMARTER.

Summary:

- Decide "What You Want Most."
- Narrow the focus to specific Place and Time.
- Avoid Analysis Paralysis.
- Scale the project to suit your TIME, SPACE and SKILLS.
- Pick a start date and an end date. This Lifetime?
- Design and build a part of the plan including buildings and scenery.
- You have to REALLY want this!

SCHEDULES

For more information, contact the organization listed. We do not have further details. Obviously, schedules are subject to change. Check with the venue before the event.

November 5 - Clinton River Division Layout Tour - see flyer in this issue

November 12 - Division 6 Model Railroad Show and Workshop, 11 am - 4 pm,
Ward Church, 40000 West Six Mile Road, Northville, MI

November 12, 13, 25, 26, 27, Dec 3, 4, 10, 11 - Detroit Model Railroad Club Open House, noon to 5 pm each day, 104 N. Saginaw, Holly, MI

November 13 - Lansing Train Show, 10 am - 4 pm, MSU Pavilion, 4301 Farm Lane, East Lansing

November 17 - Clinton River Division Monthly Meeting, 7:00 pm
at Troy Christian Chapel

November 26 - Model Train Show at Packard Proving Grounds, 10 am - 3:30 pm -
49965 Van Dyke Ave, Shelby Township, MI 48317

NOVEMBER 2022 MEETING
Live at Troy Christian Chapel and on ZOOM
Thursday, November 17, 2022, 7:00 pm

Show and Tell Topic:
“PASSENGER CARS” or CURRENT PROJECT

Clinic Topic:
Dan Lewis, MMR - “CHAPEL CARS”

We will send you notice of the meeting and the ZOOM code a few days before the meeting. Please look in your SPAM folder if you don't receive it timely. Don't ask, I have no idea why some providers think I am SPAM!

CLINTON RIVER DIVISION 8 BOARD OF DIRECTORS

Superintendent: Curt Danielewicz - curt48044@gmail.com
Treasurer: Dan Shilt - ddshilt@aol.com
Secretary: Kent Aughe - chappie81@wowway.com
Directors: Mark Mincek - themotive@att.net
Phil Doolittle - doolittlep@comcast.net

Car House Editor: Kent Aughe

Car House Proof-reader: Barbara Aughe

NEXT MEETING - Live and ZOOM
November 17, 2022 - Thursday at 7:00 pm
TROY CHRISTIAN CHAPEL
Second Floor Meeting Room (use parking lot door and stairway just inside the door. There is also an elevator in the lobby if you prefer)
400 E. LONG LAKE ROAD, TROY, MI
See you there! Same Time, Same Place, Third Thursday, Every Month

**Thanks for your membership, support and participation in person
at Troy Christian Chapel or in the Zoom meetings.**

CLINTON RIVER DIVISION LAYOUT OPEN HOUSE

SATURDAY, NOVEMBER 5, 2022, 1-4 PM

Ron Griffin, 47549 Malburg Way Dr., Macomb, MI 48044



Ron's Adrian and Blissfield RR is an HO scale pike of a Class III short-line operating in Lewanee County, MI. The shelf layout is set in a 26.5' x 13.5' room with a center peninsula and a helix connecting two levels. About 2/3 of the scenery is complete, and there is a 53" nod-under to enter.

Greg Rich, 53372 Deerfield Lane, New Baltimore, MI 48047



Greg's New Baltimore & Fair Haven RR, set in 1927, was featured in the June 2016 MR. It is a free-lanced line, 55' x 30' around the walls (and no duck-under). Scenery is 95% complete and the layout features dozens of exquisite scratch-built and kit-bashed models.



DIVISION 6 and invited guests of the
NORTH CENTRAL REGION of the
NATIONAL MODEL RR ASSOCIATION
PRESENT



44th ANNUAL!

MODEL RAILROAD SHOW & WORKSHOP

**11am- 4pm Saturday
November 12, 2022**

**NEW DAY!!
NEW LOCATION!!**

**LEARN HOW TO DO & ENJOY MODEL RAILROADING!
This is NOT a sale or swap meet!**

SEE DEMONSTRATIONS on power systems, scenery, kit building, structure building, backdrops, wiring, track laying tips, & basic building techniques.

ALSO SEE video presentations, historical displays and operating model railroad layouts! Refreshments available.

ASK QUESTIONS of our talented members and NMRA Master Model Railroaders – we have 7!! Get answers to your modeling questions!

PARTICIPATE IN a raffle for many prizes of model railroad items and an open model railroad model contest



GREAT FUN FOR THE ENTIRE FAMILY!

Stop by for a visit, ask questions, get answers!

MODEL RAILROAD SHOW & WORKSHOP
is located at **WARD CHURCH**
40000 Six Mile Rd Northville, MI. 48168

ENTRY FARE: \$3 per person
\$5 per family
under 16 is FREE!



2nd Annual MODEL RAILROAD SALE!

Hosted by Division 6
North Central Region - National Model Railroad Association

SUNDAY – JANUARY 22, 2023
10am - 3pm

Costick Community Center

28600 W Eleven Mile Rd, Farmington Hills, MI 48336

135 Tables of model railroad items - ALL scales!
Door Prizes Awarded every 45 minutes! (must be present to win)
Snacks and refreshments available

Admission –
\$5 per person over 18 years old (spouses/children under 18 = FREE!)
\$10 per person Early Bird entry at 9am
Information –
Barry or Terry 734-649-3056 (6pm-9pm) div6trainshow@gmail.com
VENDOR INFO on back side of this flyer!

SUPPORT LOCAL MODEL RAILROAD SHOWS AND THE ORGANIZATIONS THAT SPONSOR THEM. And you will improve your modeling skills, maybe pick up some cool equipment, meet old and new friends, AND HAVE FUN!

2nd Annual MODEL RAILROAD SALE!

Hosted by Division 6
North Central Region - National Model Railroad Association

SUNDAY – JANUARY 22, 2023
10am - 3pm

Costick Community Center

28600 W Eleven Mile Rd, Farmington Hills, MI 48336

VENDOR INFORMATION..... HELLO!! Welcome to the 2nd Annual MODEL RAILROAD SALE, hosted by Division 6 of the NCR/NMRA. Here is the info you need to be a vendor at our event....

- * Vendor tables are \$25 each. Tables size is 30" x 8' long. There is no limit to how many tables you can buy.
- * Tables will be assigned their location on a first registered-first get system. Please note any special requests below and we will do our best to accommodate you. * Set-up will start at 7am on Sunday, January 22.
- * All vendors will sell from behind your table. * There will be one chair per table. Extra chairs may be available.
- * We are doing an Early-Bird sale at 9am-10am for the public. You are free to sell at that time, or not. Doors open to the rest of the public at 10am-3pm.
- * Vendors are encouraged to bring their own lunch/food/snacks. Division 6 will be selling snacks and refreshments.
- * There will be FREE donuts and coffee for vendors only, from 7am-9:30am
- * Cancellations for table fee refunds must be given to us by Wednesday, January 11, 2023. No refunds if notified after that date, unless we can resell your tables.

* Sorry that registration is not available online – please send this form with your payment, check or US Postal money order.

* Make out to – **DIV 6 NCR NMRA** Send to – **Div 6 Model Railroad Sale 43642 Lotus Dr Canton, MI 48188**

EXHIBITOR AGREEMENT – Vendors will be responsible for any injuries or loss to themselves or their property. They expressly release DIVISION 6 and it's members from any liability and agree to indemnify and hold DIVISION 6 and it's members harmless.

Signing this agreements means you have read all of the

facts above and agree to them. If for any reason the

SALE is cancelled, refunds will be issued asap. SIGNED: _____ Date _____

Name/Company _____ Phone _____

Address _____

Email _____ No of tables _____ No of helpers _____

Special requests - _____