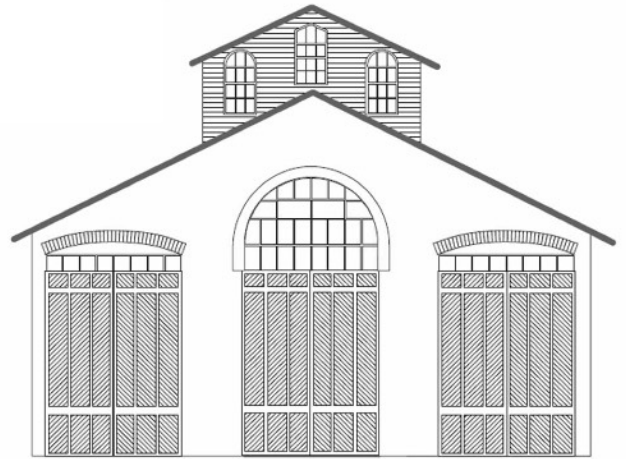


CAR HOUSE

MAY, 2021



Website:
<http://div8.ncr-nmra.org>
or
clintonriverdivision.ncr-nmra.org



Website:
<http://www.nmra.org/>

FROM THE SUPER – MAY, 2021

Greetings to all Clinton River Division members from the superintendent. I hope this newsletter/May meeting minutes finds you well, especially if you could not attend the Zoom meeting. We tried our new meeting format/agenda and for the most part it was more successful as we adjourned at a reasonable time and had a fairly extended and well attended roundtable after adjournment. As a reminder the meeting will open with recognition for visitors and recognition of MMRs present, then to the following agenda:

1. Clinic
2. Break (5 minutes)
3. Business portion
 - a. Previous meeting minutes corrections/approval
 - b. Old business
 - c. New business
 - d. Committee reports as needed
- e. Hints and tips
- f. Show and Tell
- g. Meeting wrap-up with announcement of next month's clinic and show and tell
- h. Official adjournment
- i. Roundtable

A reminder that Show and Tell presentations will be timed for 2 minutes to keep the meeting on track. If you wish to have more time, we will have one "showcase" Show and Tell timeslot of 5 minutes. You will need to email me (curt48044@gmail.com) a minimum of 2 days prior to the meeting making the request

to be showcased and this honor will be rotated as long as there are multiple requests, until everyone has a turn that wants it. You will be notified prior to the meeting as to whether you will be showcased or you will have the standard timeslot. The showcase slot will allow you to go through a small PowerPoint presentation, show multiple photos or video, etc. The remainder of the show and tell presentations will be subject to 2-minute timer, once that timer expires we will need to move on to the next person. No one requested a showcase timeslot for May and we still had a number of Zoom sharing snafus. Please check out the training videos below to make the virtual meeting experience go more smoothly.

For those of you that are unfamiliar with Zoom sharing, please go to YouTube and check out

<https://youtu.be/6uO2F1BIM5M>

or go to the Zoom site and check out their training videos for sharing

<https://support.zoom.us/hc/en-us/sections/201740106-Screen-Sharing>

By checking out these helpful links and getting familiar with the Zoom controls from whichever platform you are using, you will have a much more pleasant and frustration-free experience as well as allow our meeting to flow quickly and seamlessly from one participant to the next.

In closing, government direction on gatherings, mask wearing, etc are in flux. I have reached out to the Troy Christian Chapel minister to determine if and when we can resume in-person division meeting. We will also continue to broadcast the meetings via Zoom even when move back to in-person meetings. Those with health concerns, snowbirds or at your cottage will still be able to participate! At this point I would anticipate restarting in-person meetings around August or September unless something drastic happens to change the current situation. I will be reaching out to you to gather some information to present to our host's deacon board for their discussion and decision on whether we can meet in-person again at Troy Christian Chapel. I appreciate your cooperation in advance.

P.S. - private Facebook group for the Division at <https://www.facebook.com/groups/288929175921717/>

Best regards,

Curt Danielewicz

Business and Announcements:

- **EVERYONE:** if you displayed a model or prototype item or otherwise participated in our ZOOM meeting, please send me photos at chappie81@wowway.com to include your contribution in the monthly issue of the Car House. Thanks.
- **MASTER MODEL RAILROADERS** in attendance at the MAY ZOOM meeting: **Ken Chick, Ron King, Greg Rich, Larry Wolohon, and Jim Zinser.**
- **GUESTS:** We welcome guests from other Divisions who attended our Zoom meeting. Our total attendance was in the 30s. Thanks for attending. You are always welcome.

- **NORTH CENTRAL REGION FALL 2021 CONVENTION, BLACK SWAMP JUNCTION 2021**, is scheduled for October 21-24 at the Radisson Hotel at University of Toledo. For information and registration, visit <http://divisiononencr.com>
- April Car House approved with one correction - **Mark Linke** (not Mark) - sorry **Marv** - auto-correct struck again!
- **Dan Shilt**, Treasurer, reported \$6,358.71 on hand. He will be writing \$500 check to NMRA for donation approved last month. Also, he will be reimbursing Phil Doolittle for ZOOM-related expenses.
- **Dean Pyers** moved to Ohio and resigned as Resident Agent for the North Central Region (a State of Michigan legal requirement that the resident agent live in Michigan). Best wishes, **Dean**.
- **Curt Danielewicz**, Superintendent, is working with Troy Christian Chapel, regarding our use of their facility for face-to-face meetings. Church is currently undecided about allowing outside groups into the building. Additionally, what is the liability for the Division, for the Region, and for NMRA? Look for a survey about meetings coming to your in-box soon. (See **Curt's** column on pages 1 & 2 for details)

MAY CLINIC

Tim Fisher: Automotive Industry & Railroads Prior to 1960

- Highlighted were rail operations from 1915 to 1960 in this presentation. About 1960 with the development of auto-racks, more completed vehicles were shipped by rail.
- Henry Ford's Highland Park Plant was the first major assembly plant - about 60 vehicles per hour.
- Highland received 400 rail cars per day - parts from suppliers.
- Rouge complex was largely a parts supplier that shipped parts by rail around the country to 31 assembly plants. Completed vehicles in the early days were mainly driven to dealers.
- Smaller manufacturers (one assembly plant) usually shipped completed vehicles by rail - often dismantled bumpers to shorten auto for boxcars.
- By the 1930s convoys of trucks with auto-racks (4 or 6 vehicles) delivers completed autos across the country.
- By 1960, 46 assembly plants(all manufacturers) in the US produced 7.9 vehicles, completed vehicles were mainly shipped by truck, components from suppliers mainly by rail.
- KD kits (for "knocked-down") were boxed and shipped overseas before World War II (and some after). The vehicles were then assembled at foreign plants. It was cheaper to do so.
- **Tim's** PowerPoint contained many vintage photos of auto plants, rail facilities, rail cars, autos, and trucks.



Example of boxcar unloading of new vehicle in a small town. Santa Fe freight house, ramp, modeling and photo by **Tim Fisher**.

The following photographs are by the builders of the models unless noted.

MAY 2021 SHOW & TELL

Theme: **AUTOMOBILE INDUSTRY RELATED RAILROAD ITEMS** Or Current Project

Mark Mincek shows a B&O M27 boxcar conversion with the extra half door added. The B&O built 2,000 boxcars in 1926 to haul autos. The second photo is also an M27 conversion with a full door added and the addition of a Mansard roof to accommodate the extra height required for the Evans auto loaders.



Gregg Wujcik converted a student desk into a nifty modeling work bench. Someone suggested adding some white tiles under the bench to find the inevitable “parts on the floor”!



Tony Britsky displayed his first annual ugly train award - a French Billard A150D Autorail, metre gauge. He is building a 3-D model, with a Bachmann cable car motor as a model of the prototype does not exist.



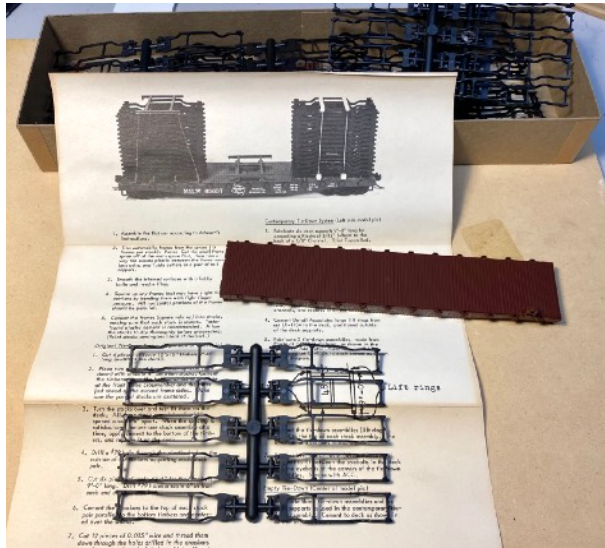
John Jackson shows two Ford tractors on a flat car and a 1998 book from Walthers, America's Driving Force: Modeling railroads and the Automobile Industry.



Byrne Blumenstein detailed a Santa Fe steel coil car - carrying the metal to a stamping plant, vital to automobile construction.



Dave Katona - a not so current project. He purchased three Athearn custom auto-frame flats in 1978 during the NMRA Convention in Dearborn. "I was going to assemble it last year when I started to tackle my pile of unbuilt kits during the pandemic lockdown. Still haven't gotten to it!"



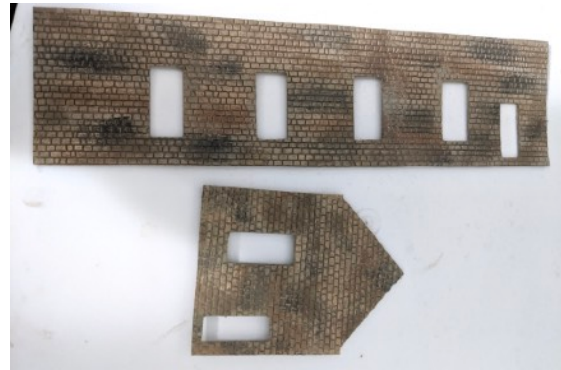
Ken Chick, MMR, contributed from the other end of the supply chain, a Mobil gas station offering mechanical and wrecker services in N Scale.



Bob Scherer is modifying undecorated Athearn "hustler" bodies for his railroad



Steve Weber is starting a Campbell engine house



Larry Dickinson is building the Cash Mine Works kit by Blair Line LLC.



Dave Thornton displayed an O Scale 50' NKP auto boxcar

Paul Bentley is building raised passenger platforms from 200 mil styrene (can buy 4' by 8' sheets at Menards - use superglue as adhesive.

Ken Scherer has Walthers 89' Grand Trunk auto racks and Hi-Cube double 2 door boxcars to haul rear ends and drive shafts.

Pierre Willernet showed photos of Portland, Maine in the 1920s. Automobiles were being delivered by rail in the snow, one car being pulled through deep snow by a horse!

Fred Cosgrove - Interurbans had auto haulers - split-end doors to load autos - photos of a restored Lake Shore electric and a model of an Indiana Railroad car.



Warren Yohe continues to work on the coaling station for his yard. Given the cold weather in the UP, he will enclose it - see the prototype photo in the background



Larry Wolohon, MMR, has Pere Marquette auto boxcar in O Scale from Protocraft. They came equipped with Evans Loaders, which allowed two levels of autos in the boxcars. He also displayed a Model railroader book, "Railroading and the Auto Industry."

Jim Zinser, MMR, displayed an HO NKP auto box and a GT auto box.

Greg Rich, MMR, provides updates on his layout. He is re-building a Walthers turntable, with decoder and "buddy" controller, a coaling tower, and an engine house. The photo is from April, the expansion of another part of the layout.



Jerry Shanek, in April, displayed three DCC large scale steamers, a Daylight, a Challenger and the 844. The 844 weighs 70 pounds! About the auto industry, Jerry says to build a model of an auto plant, he will need a building permit!



Alex Radu showed a US Army flatcar with trucks and chain tie downs.

Dan Mitzel bought another Iowa Scale Engineering throttle - "It's a 'gotta have'." **Dan** also offered a PSA - if you discover a BUMP anywhere on your body, go to the doctor. He had surgery and radiation for thyroid cancer and the prognosis is good because it was treated early. Best wishes **Dan**.

George Anderson models the 1880s, not much auto traffic on his railroad! He is busy working on rock cars, that hauled copper ore from 1880s through World War II.

JUNE 2021 MEETING - on ZOOM
Thursday, June 17, 2021, 7:00 pm

Show and Tell Topic:
“Railroad Items Related to the Erie or the Susquehanna”
or Current Projects

Clinic:
Ron King, MMR:
A Virtual Tour of His ERIE Railroad, set in October 1953

*We will send the ZOOM code a few days before the meeting.
Please look in your SPAM folder if you don't receive it timely.
Don't ask, I have no idea why some providers think I am SPAM!*

CLINTON RIVER DIVISION 8 BOARD OF DIRECTORS

Superintendent: Curt Danielewicz - curt48044@gmail.com
Treasurer: Dan Shilt - ddshilt@aol.com
Secretary: Kent Aughe - chappie81@wowway.com
Directors: Mark Mincek - themotive@att.net
Phil Doolittle - doolittlep@comcast.net

Car House Editor: Kent Aughe **Car House Proof-reader:** Barbara Aughe

**FACE-TO-FACE PHYSICAL MEETINGS SUSPENDED UNTIL IT IS SAFE TO MEET
AT THE TROY CHRISTIAN CHAPEL**

**Thanks for your membership, support and participation in the Zoom meetings.
HAPPY MODELING and STAY HEALTHY and SAFE!**