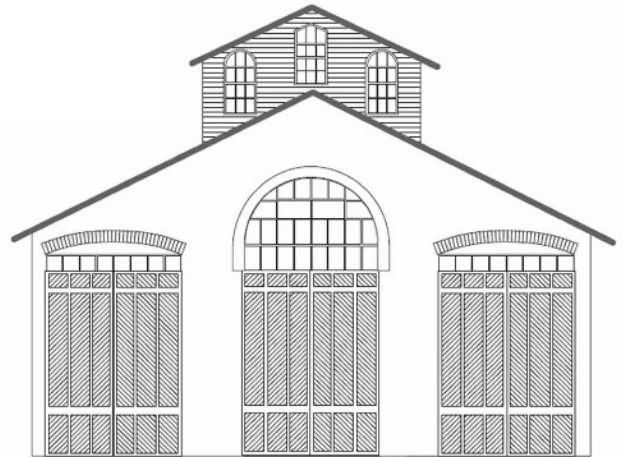


# CAR HOUSE

## MARCH, 2021



Website:  
<http://div8.ncr-nmra.org>  
or  
[clintonriverdivision.ncr-nmra.org](http://clintonriverdivision.ncr-nmra.org)



Website:  
<http://www.nmra.org/>

### FROM THE SUPER – MARCH, 2021

Greetings to all of the Clinton River Division members from your new (old) superintendent. We had a very good meeting this past Thursday on Zoom with plenty of socializing, I've been told too much by some, so I'll try to better police the next meeting. Since we haven't been able to get together in person for socializing I tend to cut a little more slack for that aspect and I apologize to those of you negatively impacted by the indulgence.

#### NEW CLINTON RIVER DIVISION FACEBOOK PAGE

**As I stated during the meeting, I created a private Facebook group for the Division at <https://www.facebook.com/groups/288929175921717/>**

For those of you that do not know the difference, a private Facebook group requires your membership request to be approved by a group administrator (at this point only me), people on Facebook can see the group, but not its contents nor members. Since this limits the access to the group, I do plan on posting the Zoom meeting links there in addition to Kent's emailed invitation. If you misplace Kent's email and cannot find it on the third Thursday of the month, you will be able to access the link from our Facebook group. Additional links of NMRA, model railroading, and rail history will be posted by yours truly and it is encouraged for you to share appropriate content as well for the enjoyment of our members. Please keep our group on topic and do not get derailed with political and/or social topics within the group.

In closing it appears that many of our members have started Covid-19 vaccinations and hopefully later in the year we will be able to safely gather in person again and I look forward to that. We had a preliminary

discussion of continuing the Zoom meetings in conjunction with our live meetings to support members that cannot attend in person due to distance, circumstances or being snowbirds for a good portion of the year. More to come as we flesh that proposal out and as we move closer to meeting in-person again.

Best regards,

Curt Danielewicz

---

The NMRA issued a plea this week NOT TO MARK AS SPAM ANY EMAILS you receive from National, even if you don't want to read them. Simply DELETE them! Otherwise, it may alert email servers legitimate emails may be spam. Thanks for your consideration.

---

### **Business and Announcements:**

- **APOLOGY! MEA CULPA!** The email announcement for the March Zoom meeting was confusing! The listing for the meeting announced the meeting as 7:00 pm and as 7:30 pm. Your editor didn't edit very well. **The Zoom meetings are ALWAYS 7:00 pm, on the Third Thursday of the month.**
- **EVERYONE:** if you displayed a model or prototype item or otherwise participated in our ZOOM meeting, please send me photos at [chappie81@wowway.com](mailto:chappie81@wowway.com) to include your contribution in the monthly issue of the Car House. Thanks.
- **MASTER MODEL RAILROADERS** in attendance at the March ZOOM meeting: **Ken Chick, Bruce DeYoung, Ron King, Jim Macino (Div 3), Greg Rich, Larry Wolohon, Jim Zinser**
- **GUESTS:** We welcome guests from other Divisions who attended our Zoom meeting. Our total attendance was in the 40s again. Thanks for attending. You are always welcome.
- **ACHIEVEMENT PROGRAM:** **Ken Chick, MMR**, reminds everyone that many of the models displayed in recent Zoom meeting might qualify for Achievement Program awards. Please contact Ken for information. He might even contact you to include you!
- **NORTH CENTRAL REGION FALL 2021 CONVENTION, BLACK SWAMP JUNCTION 2021**, is scheduled for October 21-24 in Toledo. If you would like to present a clinic, particularly about railroad/maritime interface (note: all you who model ferry operations, ore or grain loading/unloading), please contact Dave McMullian at 419-508-2206.
- **NMRA.ORG** is your gateway to a wealth of model railroading information, news about the hobby, tips about modeling, EduTrain videos (see this month's clinic by Bruce DeYoung, MMR, other member benefits and "Division Business Car" extras by our own **Jim Zinser, MMR**. Check it out anytime.

## All Aboard!

### World's Greatest Hobby Online – April 17th

*The first virtual train show to replicate the in-person train show experience*

**Registration is FREE for the first 10,000 people**

World's Greatest Hobby Online is the first virtual train show to let you select what you want to see! Tour booths from many of the best-known train manufacturers and retailers on the virtual "show floor" and **enter or leave any booth whenever you like**. Interact with exhibitors via live chat, watch educational seminars with live Q&A sessions, and check out the discounts and deals in our Show Specials merchandising area. For an overview of the show including video visit:

<https://www.wgh.events/attendance-information>

- From **Dean Pyers**: Virtual Shopping: **The Steam Railroading Institute** has expanded their on-line store, and it now includes an area for model railroad kits, detail parts, and hobby supplies. Many of these items have been donated to **SRI** from modelers reducing their collections or from estates, and **SRI** uses them on their layout or sells the surplus products to support PM 1225 and the Institute. Items will be added regularly throughout the year. The complete store is at <https://www.shop.michigansteamtrain.com/> and the model supplies are at <https://www.shop.michigansteamtrain.com/collections/model-railroad-surplus-resale>
- **TIP**: There are such things light-saber chopsticks (!Who knew that!) They make great uncoupling tools. (Sorry, didn't catch who reported this.)

### ***THE MARCH CLINIC: INTERIOR DECORATIONS*** by Bruce DeYoung, MMR

Highlights:

- It is easier to detail interiors during construction than after!
- The goal is to depict a realistic, miniature worldUse inexpensive material
  - paper or masking tape for shades
  - scraps of cloth for drapes
  - Venetian blinds from white paper with pencil stripes
  - Don't detail as heavily when the interior detail cannot be seen easily
  - Use internet photos (most everything is available). Just scale it to fit
- Bruce used many photos of models from many excellent modelers.

An earlier version of this clinic is available on the NMRA website, members only area, EduTrain tab, search for Bruce's clinic. Many great photos.

The following photographs are by the builders of the models unless noted.

**MARCH SHOW & TELL**  
**Theme: BUILDING/CAR INTERIORS Or Current Project**

**Warren Yohe** printed decals on white paper and applied them to his Duluth South Shore & Atlantic passenger car.



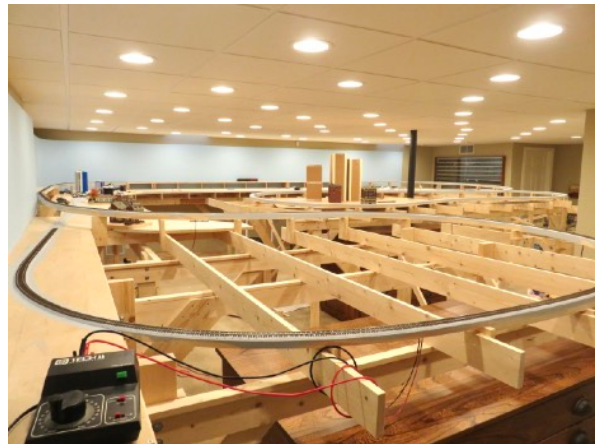
**Ken Chick, MMR**, acquired two new NP Broadway Limited heavy Mikes with sound, weathered and ready to haul freight.



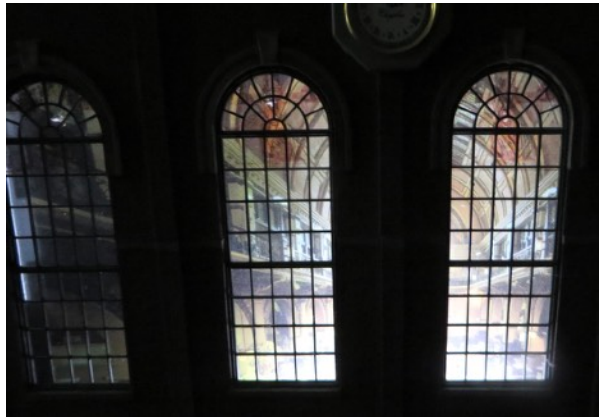
**Phil Doolittle** showed HO interiors, Huston's Tractor Sales (models), White Castle (bldg removed to view interior details) and Ridley's Paper Mill (interior prints downloaded).



**Mark Mincek** shows the progress of his layout - about finished laying track - has 51 feet of mainline - 36 inch minimum curves, all with easements and super-elevation.



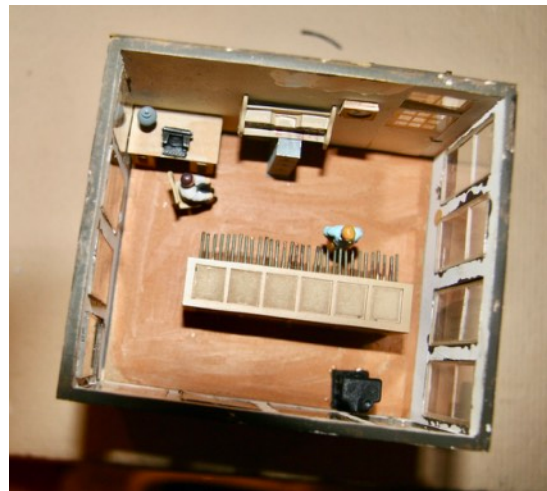
**Rad Jones** copied interior photo of train station from Depot book, then copied it onto transparency film, glued behind the windows and back lit it. He used similar method for the fire station and the feed store.



**Ron King, MMR**, scratch-built the Montclair, NJ Erie Railroad station, interior detailed with lights - not hard-wired, but used brass tubing and springs to distribute current to LED strips under the roof.



**Larry Wolohon, MMR**, built the Santa Clara yard tower with detailed interior (photo) and a turntable - the control shack has interior lighting



**Ken Scherer** is starting a new layout in a different part of his basement & will have 2 helixes - new floor and ceiling, new drywall - the old layout dates from the late 1970s.



---

**Rick Ware** - scratch-built a 1:24 scale wood A-frame log car unloading crane. Adjacent corrugated metal shed is a secondhand Pola structure that houses the hoisting mechanism.



---

**John Jackson** finished an undecorated CO NCOR 40' boxcar for Central Vermont with a set of Herald King decals and Smokebox Graphics reflective stripes and Krylon rattle can camouflage paint.



---

## MARCH SHOW & TELL WITHOUT PHOTOS

---

**Dan Shilt** scratch-built his O Scale steamer, the Algonqui. The prototype carried 75 passengers and freight on the lower level.

---

**Mark Cowles** is ripping up parts of his layout, powering turnouts and general updating.

---

**Paul Runyan** purchased a Broadway Limited locomotive which will not run, so back to the factory it went!

---

**Greg Rich, MMR**, displayed "A. Ascioti Market," a Walthers kit to which he added 1920s signs, awnings, veggies and fruit stands and people. He is modifying his layout by adding 2" to 8" to approximately 25' of the aisle area for additional sidings, a trestle and mountain.

---

**Tim Fisher** received his repaired DCC programming module and has installed 4 sound decoders that work.

---

**George Anderson**, in building his outdoor railroad in Arizona, uses carved styrofoam to represent machinery inside "his sturdy and crude" structures.

---

**Jerry Shanek** built a G Scale switch tower with levers and interior lighting. He found a G scale Pole restaurant building to modify and now owns a G scale 0-6-0 cog locomotive (think Pike Peak RR)

---

**Stu Sonta** 3-D printed an NYC Crusader (a shrouded Hudson) in N Scale.

---

**Steve Weber** installed a DCC auto-reverser and it works!

---

**Tom Hoermann** discovered a new use for the thin polystyrene packaging from the bakery. The plastic makes great window glass. (Ed: another reason to indulge in your favorite pastry!)

---

**Jim Macino, MMR (Div 3)** built HO carousel, with animated horses and calliope music.

---

**Bill Riter** scratch built in N scale. UP section house, combo coal & outhouse(!), and a station, prototypes at Coalville, UT.

---

**Curt Danielewicz** 3-D printed torpedo tubes for his GT GP-9s. He already bought Detail Products inventory of the items. Ron King, MMR, has a supply for Curt. Problem solved!

**APRIL 2021 MEETING - on ZOOM**  
**Thursday, April 15, 2021, 7:00 pm**

**Show and Tell Topic:**  
***“DCC Items/Tips or Locomotives” or Current Projects***

**Clinic:**  
**RICK NEIBERT: DCC Section Blocks**

*We will send the ZOOM code a few days before the meeting.  
Please look in your SPAM folder if you don't receive it timely.  
Don't ask, I have no idea why some providers think I am SPAM!*

**CLINTON RIVER DIVISION 8 BOARD OF DIRECTORS**

**Superintendent:** Curt Danielewicz - [curt48044@gmail.com](mailto:curt48044@gmail.com)  
**Treasurer:** Dan Shilt - [ddshilt@aol.com](mailto:ddshilt@aol.com)  
**Secretary:** Kent Aughe - [chappie81@wowway.com](mailto:chappie81@wowway.com)  
**Directors:** Mark Mincek - [themotive@att.net](mailto:themotive@att.net)  
Phil Doolittle - [doolittlep@comcast.net](mailto:doolittlep@comcast.net)

**Car House Editor:** Kent Aughe

**Car House Proof-reader:** Barbara Aughe

**FACE-TO-FACE PHYSICAL MEETINGS SUSPENDED UNTIL IT IS SAFE TO MEET  
AT THE TROY CHRISTIAN CHAPEL**



**Thanks for your membership, support, and participating in the Zoom meetings.  
HAPPY MODELING and STAY HEALTHY AND SAFE!**