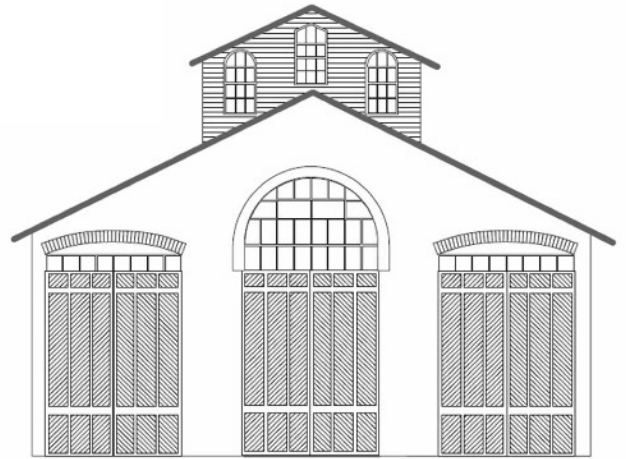


CAR HOUSE

FEBRUARY, 2021



Website:
<http://div8.ncr-nmra.org>
or
clintonriverdivision.ncr-nmra.org



Website:
<http://www.nmra.org/>

FROM THE SUPER – FEBRUARY, 2021

Well, fellow modelers, here it is, my last “From the Super” column as Clinton River Division Supervisor. I have enjoyed serving you, and getting to know many of you better. I hope you have enjoyed my ramblings over the last six years, and maybe found some useful or at least mildly interesting. Upon moving to the “supervisor-emeritus” position on the Board of Directors I will cease these monthly notes. Who knows, I may contribute some words to your Car House editor from time to time in the future, but no promises.

I want to thank those who have served on the Board with me during my tenure, namely Secretary Kent Aughe, Treasurer Paul Runyan, Past Superintendent John Jackson, and Board Member at Large John Gavasso. I should also mention how much I appreciated the job Bill Gawthrop did as Secretary. I wish he were around to thank!

Thanks also to some volunteers who have helped keep the Division running smoothly. George Van Duyne has kept our web site up to date (and he would like to be replaced, if there are any volunteers for the job!). Larry Wolohon has arranged most of our clinics and Show and Tell subjects. Ken Scherer has talked up the division and NMRA at numerous train shows as our chief recruiter. And Dean Pyers has assured that our IRS reports have been completed as the Regional Resident Agent.

Also, big “Thanks!” go to the incoming Board members, Superintendent Curt Danielewicz, Treasurer Dan Shilt, Member at Large Mark Mincek, and Secretary Kent Aughe. It will be a pleasure to work with them.

Last night (as I write this) we held a transition meeting between the old and new boards. It went very well. Not only did we pass on the routines and duties that keep the CRD running well, we also recognized quite a number of ideas, projects, and such that the Board may wish to pursue to improve the function and usefulness of division to its members in the future. Your Division is in good hands. Hopefully with the passage of time and the wide distribution of vaccines, we will be able to get back to in-person meetings within a few months.

Now to concentrate on building my own railroad. That is, if my duties to Clinton River Division, North Central Region, and Stoney Creek Model Railroad Club will leave me any time! (I’m cautiously optimistic.....)

Phil Doolittle

MEET OUR NEW OFFICERS elected unanimously February 18, 2021 for two year terms:

- **Superintendent: Curt Danielewicz** - has been employed for 31 years at General Motors in various skilled trades, product engineering and quality capacities. Curt has been an NMRA life member since the late 90’s and has held the scribe, secretary and president positions from 1997 to around 2007 (going off of memory). Curt recently started modeling more actively within the last few years and is looking forward to working at the local level again to try to grow our membership and look for creative ideas to benefit our members.
- **Treasurer: Dan Shilt** - moved to MI 18 months ago after 30 years in Atlanta where he modeled the Huntsville & Lake of Bays RR in On30. He has been an NMRA member since 2005. He was able to attend one meeting before the Division meetings went to Zoom. He has served as Treasurer for several small organizations including his neighborhood association.
- **Secretary/Dispatcher: Kent Aughe** - has served in this position for four years. He is a retired healthcare chaplain. He started modeling with a Lionel O-27 set at age 7 and graduated to N scale about 50 years ago, although most modeling was of the “arm chair” variety until retirement. His railroad is a two-level rendition of the Monon in Central Indiana (sans scenery so far). He looks forward to much modeling and face-to-face Division meetings in 2021.

- Board Member at Large: **Mark Mincek** - received his first model train set for Christmas at age 10. The model railroad bug bit when he was 14 and scratch built an engine house after reading an article in Model Railroader. Up until the Detroit NMRA convention in 2007, he was definitely a lone wolf modeler, but joined the NMRA to attend the convention. Shortly after that, he started to attend the Division 8 meetings. Becoming an active member of Division 8 has opened up an entirely different side of the hobby. He has learned from some of the best modelers in the hobby and more importantly, made some great friendships that make the hobby even better. He wants to pay back the hobby that he enjoys so much by becoming an officer within the the Division 8 organization.
 - Superintendent Emeritus (Board member, by our By-Laws): **Phil Doolittle** - we all know him.
-

Business and Announcements:

- **EVERYONE**: if you displayed a model or prototype item or otherwise participated in our ZOOM meeting, please send me photos at chappie81@wowway.com to include your contribution in the monthly issue of the Car House. Thanks.
- **MASTER MODEL RAILROADERS** in attendance at the January ZOOM meeting: **Ken Chick, Dan Lewis, Ron King, Greg Rich, Larry Wolohon, Jim Zinser**
- **GUESTS**: We welcome guests from other Divisions who attended our Zoom meeting. Our total attendance was in the 40s again. Thanks for attending. You are always welcome.
- **ACHIEVEMENT PROGRAM**: **Ken Chick, MMR**, reminds everyone that many of the models displayed in recent Zoom meeting might qualify for Achievement Program awards. Please contact Ken for information. He might even contact you to include you!
- **FINANCIALS**: From **Paul Runyan**, Treasurer, No changes from last month, balance \$6,302.51.
- **NMRA JULY 2021 NATIONAL CONVENTION IN SANTA CLARA, CA**, has been cancelled. Leadership hopes to put together a “virtual convention.” Stay tuned. NMRA plans to hold 2022 National Convention in St. Louis in August 2022.
- **NORTH CENTRAL REGION FALL 2021 CONVENTION, BLACK SWAMP JUNCTION 2021**, is scheduled for October 21-24 in Toledo. If you would like to present a clinic, particularly about railroad/maritime interface (note: all you who model ferry operations, ore or grain loading/unloading), please contact Dave McMullian at 419-508-2206.
- **RFD TV** - available on some cable systems broadcast a show about trains at 5:00 pm on Mondays - check with your cable system.
- **February Clinic** was cancelled. The video about the Pullman Company is not available for Zoom use

The following photographs are by the builders of the models unless noted.

FEBRUARY SHOW & TELL

Theme: PASSENGER EQUIPMENT Or Current Project

Larry Wolohon, MMR, displayed his Precision Scale Texas & Pacific 40' RPO in O scale



Rad Jones runs the 20th Century Limited on his layout. It's a 9 car set from KATO.



John Jackson has no passenger service on his layout. He has built a couple of switch towers, one for the Potomac Yard, another for the Tuxedo Jct, both with interiors. He also has built a new tool caddy, which he plans to write-up for the Hot Box and/or NMRA Magazine.



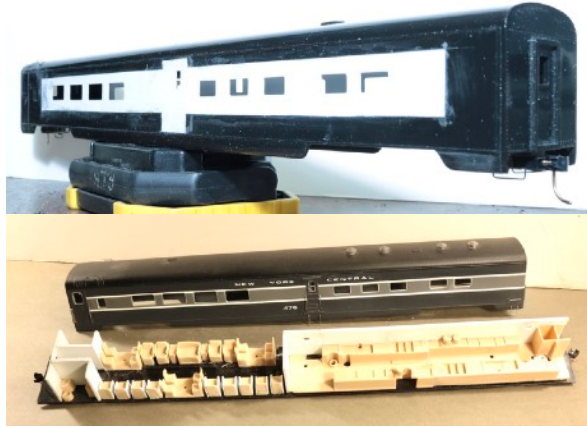
Bob Scherer is adding number boards to his RS-3s. The decals were produced by Precision Design, www.PDC.ca



Dan Lewis, MMR, rebuilt this Motorcar #5901 with a baggage section from a PA-1. It ran on line Dan models, usually with one or two cars, and perhaps a milk car



Ron King, MMR, is rebuilding an American Models NYC kitchen/lounge car in S gauge. He cut the sides out, added Laser Horizons car sides, used drywall putty to fill in, sand and paint.



Dave Katona - built this C&O car back in the late 1970's way before all the nice Walthers cars were even thought of. He used an AHM (Rivarossi) passenger car. The windows were rearranged to match the prototype. The stainless steel fluted sides were created by laying pieces of brass rod on some double stick tape Aluminum foil was embossed over the rod. Interior details were also added.



George VanDuyne - displayed two Pullman 10-1-2 sleepers, Branchline Trains kit from some years ago.



Irv Chmielewski displayed 65 ft combine and "solarium" cars from Con-Cor used on branch line, short-line, or secondary trains.



Dan Shilt scratch-built the "entire" fleet of the Huntsville & Lake of Bays RR passenger cars in On30. The prototypes are both c.1895 trolley cars and were modified on site by the H&LofB RR and added to their roster c. 1918. They are still in operation today as a tourist RR in Huntsville, ON. (Model & Prototype)



Marv Linke is completing a decoder install and improvements to a brass loco originally owned by Irv Schultz now owned by his grandson Evan.



Ken Chick, MMR - Vista Dome North Coast Limited Dome Car. One of 4, 2 in each of THE NCL trades, #25 & #26. Con-Car dome cars, stripped, painted for NP.



Tony Britsky displayed an Illinois Central Railway Classics Panama Limited Pullman lounge observation car.



Greg Rich, MMR, reworked three 50 foot passenger cars he purchased at shows. A Combine Ambroid wooden car, an open platform coach and a LaBelle observation car. All are now decaled for St. Clair, Potomiac and LaMoore RR



Warren Yohe - current project is detailing 1900 era passenger cars - making his own DSS&A decals - not working well with the gold lettering - will be a re-do. He is also labeling equipment with Mineral Range decals by Rail Graphics, which is now out of business. The model (an MDC Roundhouse Overland) awaiting new decals and prototype (DSS&A #213) pictured below



Rich Mahaney, North Central Region Director, photographed the Battle Creek Michigan Central station built in 1888, and the Eastbound Amtrak on 7/27/2020



FEBRUARY SHOW & TELL WITHOUT PHOTOS

Phil Doolittle displayed his "Amtrak Rainbow Train." When Amtrak began passenger service, they did not re-paint inherited equipment, so 1971 is the prototype for mixed livery.

Bill Moore runs a Pullman Palace dining car (Model Die Cast) from 1906-7 on his Boston & Maine. The through cars ran from Boston to White River, Vt. On the B&M, then on the Central Vermont and CN to Montreal.

Dave Thornton showed three cars - a 12-1 Pullman (12 sections, 1 drawing room) - an 8-1-2 (8 sections, 1 drawing room, 2 compartment) - a lightweight 10-6 sleeper - all in O scale.

Mark Mincek continues to lay track on his layout.

Paul Bentley has British Southern Railway "OO" scale Pullmans that ran to Dover, then car-ferryed across the Channel to France. The prototypes were all named cars, no sleepers.

Paul Runyan displayed his Pennsy observation Pullman for the Broadway Limited with K4S streamlined 4-6-2 to pull his short version of the Broadway.

George Anderson from warm Arizona displayed G scale PRR coach and combine, an REI product.

Dan Mitzel displayed a Walthers Milwaukee Road "Cedar Rapids" observation car.

Tim Fisher has a Spectrum (Bachmann) heavy weight coach. The couplers while not truck mounted, rotated with the trucks. Tim modified with body-mounted couplers. He also had a short circuit that required shipping back to the manufacturer for new resistors. Now works fine.

Jerry Shanek displayed his G scale California Zephyr "Silver Bronco" Dome. It is 35" long. He has Budd cars and Pullman sleepers - that's a long train. Jerry continues to work with battery power in his G scale locomotives.

Jim Zinser, MMR, displayed his 2001 "Gateway Limited" Convention car. Jim was a member of National Board of Directors and this car was a gift in 1995 to convince the Board of the St. Louis group's ability to host the 2001 convention. St. Louis submitted the only bid.

Fred Cosgrove displayed his entire "Florida" fleet of NYC passenger cars on the old trolley line from Sandusky to Toledo.

Bruce Wolfram displayed a brochure of former CP (now VIA Rail) excursions with diagrams of the various fluted Budd cars. VIA Rail plans to begin service once the pandemic restrictions are lifted. These trips are VERY expensive - \$10-20,000!

Dan Warmus -via email - sent a couple of tips. First, in response to Phil Doolittle's column in the December 2020 Car House, Dan relates he copies of prints articles of interest from the hobby press and files them in topical folders -he has two and a half file drawers full! Second, he came across a YouTube video about tracklaying, wiring and DCC, 20+ minutes

[\(S1:E5:Tracklaying, Wiring, DCC and More!\)](#)

MARCH 2021 MEETING - on ZOOM
Thursday, March 18, 2021, 7:00 pm

Show and Tell Topic:

“Buildings, especially interior details” or Current Projects

Clinic:

BRUCE DeYOUNG, MMR: Interior Detailing

*We will send the ZOOM code a few days before the meeting.
Please look in your SPAM folder if you don't receive it timely.
Don't ask, I have no idea why some providers think I am SPAM!*

CLINTON RIVER DIVISION 8 BOARD OF DIRECTORS

Superintendent: Curt Danielewicz - curt48044@gmail.com
Treasurer: Dan Shilt - ddshilt@aol.com
Secretary: Kent Aughe - chappie81@wowway.com
Directors: Mark Mincek - themotive@att.net
Phil Doolittle - doolittlep@comcast.net

Car House Editor: Kent Aughe

Car House Proof-reader: Barbara Aughe

**FACE-TO-FACE PHYSICAL MEETINGS SUSPENDED UNTIL IT IS SAFE TO MEET
AT THE TROY CHRISTIAN CHAPEL**



**Thanks for your membership, support, and participating in the Zoom meetings.
HAPPY MODELING and STAY HEALTHY AND SAFE!**